

## WELL LOCATION AND ACREAGE DEDICATION

<sup>1</sup> API Number 30-025-45635	<sup>2</sup> Pool Code 59900	<sup>3</sup> Pool Name Triple X; Bone Spring
<sup>4</sup> Property Code 317668-313956	<sup>5</sup> Property Name NEPTUNE 10 STATE COM	<sup>6</sup> Well Number 202H
<sup>7</sup> OGRID No. 7377	<sup>8</sup> Operator Name EOG RESOURCES, INC.	<sup>9</sup> Elevation 3610'

### <sup>10</sup>Surface Location

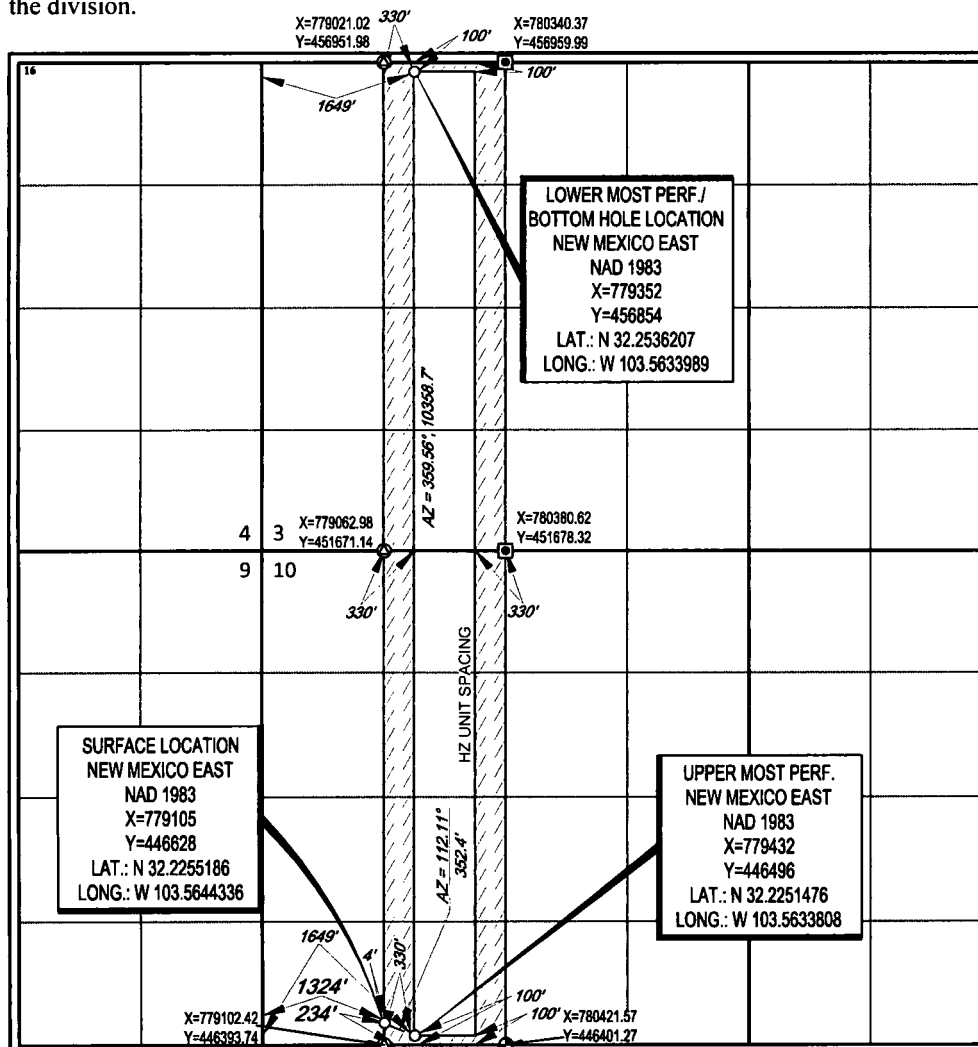
UL or lot no.	Section	Township	Range	Lot Idn	Feet from the	North/South line	Feet from the	East/West line	County
N	10	24-S	33-E	-	234'	SOUTH	1324'	WEST	LEA

<sup>11</sup>Bottom Hole Location If Different From Surface

UL or lot no.	Section	Township	Range	Lot Idn	Feet from the	North/South line	Feet from the	East/West line	County
C	3	24-S	33-E	-	100'	NORTH	1649'	WEST	LEA

<sup>12</sup> Dedicated Acres <b>320.00</b>	<sup>13</sup> Joint or Infill	<sup>14</sup> Consolidation Code	<sup>15</sup> Order No.
--	-------------------------------	----------------------------------	-------------------------

No allowable will be assigned to this completion until all interests have been consolidated or a non-standard unit has been approved by the division.



## 17 OPERATOR CERTIFICATION

I hereby certify that the information contained herein is true and complete to the best of my knowledge and belief, and that this organization either owns a working interest or unleased mineral interest in the land including the proposed bottom hole location or has a right to drill this well at this location pursuant to a contract with an owner of such a mineral or working interest, or to a voluntary pooling agreement or a compulsory pooling order heretofore entered by the division.

Signature \_\_\_\_\_ Date 2/25/19

Star L Harrell  
Printed Name

star.harrell@eogresources.com

E-mail Address

## 18 SURVEYOR CERTIFICATION

I hereby certify that the well location shown on this plot was plotted from field notes of actual surveys made by me or under my supervision, and that the same is true to the best of my belief.

Date of Survey \_\_\_\_\_  
Signature and Seal of Professional Surveyor \_\_\_\_\_

Date of Survey \_\_\_\_\_  
Signature and Seal of Professional Surveyor \_\_\_\_\_



18329

PRO

~~SECRET~~

~~CONFIDENTIAL~~

Certificate Number