

DISTRICT I  
1625 N. French Dr., Hobbs, NM 88240

DISTRICT II  
811 South First, Artesia, NM 88210

DISTRICT III  
1000 Rio Brazos Rd., Aztec, NM 87410

DISTRICT IV  
2040 South Pacheco, Santa Fe, NM 87505

State of New Mexico  
Energy, Minerals and Natural Resources Department

OIL CONSERVATION DIVISION

1220 South St. Francis Dr.  
Santa Fe, New Mexico 87505

Form C-102  
Revised August 1, 2011

HC Submit one copy to Appropriate District Office

FEB 28 2019

REC- AMENDED REPORT

WELL LOCATION AND ACREAGE DEDICATION PLAT

|                                   |   |  |
|-----------------------------------|---|--|
| API Number<br><b>30-025-45661</b> | Pool Code<br><b>96340</b>                             | Pool Name<br><b>FAIRVIEW MILLS BONE SPRING</b> |
| Property Code<br><b>326019</b>    | Property Name<br><b>PITCHBLEND FED 24-25</b>          | Well Number<br><b>453H</b>                     |
| GRID No.<br><b>162928</b>         | Operator Name<br><b>ENERGEN RESOURCES CORPORATION</b> | Elevation<br><b>3354'</b>                      |

Surface Location

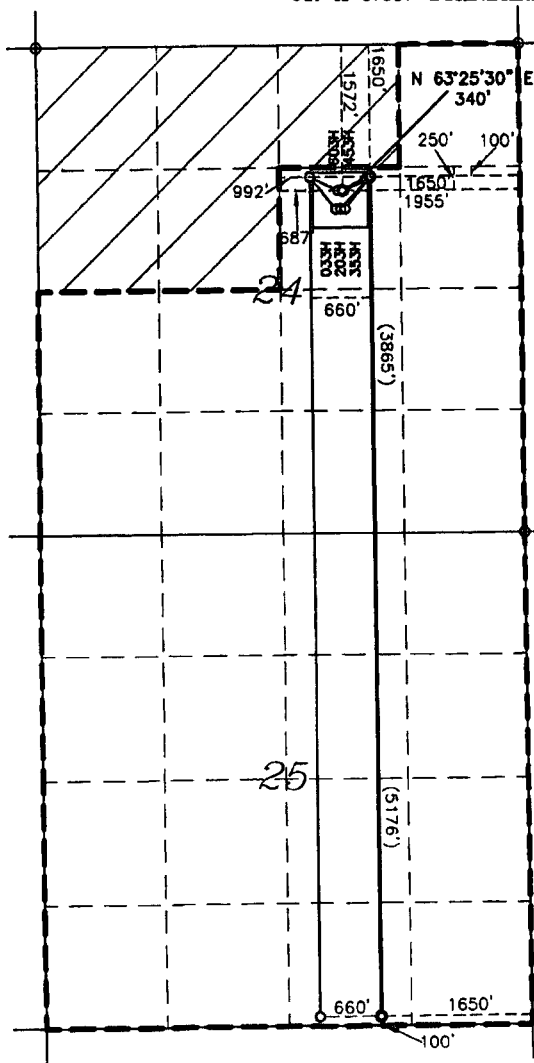
| UL or lot No. | Section | Township | Range | Lot Idn | Feet from the | North/South line | Feet from the | East/West line | County |
|---------------|---------|----------|-------|---------|---------------|------------------|---------------|----------------|--------|
| G             | 24      | 25-S     | 34-E  | G       | 1572          | NORTH            | 1955          | EAST           | LEA    |

Bottom Hole Location If Different From Surface

| UL or lot No. | Section | Township | Range | Lot Idn | Feet from the | North/South line | Feet from the | East/West line | County |
|---------------|---------|----------|-------|---------|---------------|------------------|---------------|----------------|--------|
| 0             | 25      | 25-S     | 34-E  | 0       | 100           | SOUTH            | 1650          | EAST           | LEA    |

| Dedicated Acres | Joint or Infill | Consolidation Code | Order No. |
|-----------------|-----------------|--------------------|-----------|
| 280             |                 |                    |           |

NO ALLOWABLE WILL BE ASSIGNED TO THIS COMPLETION UNTIL ALL INTERESTS HAVE BEEN CONSOLIDATED OR A NON-STANDARD UNIT HAS BEEN APPROVED BY THE DIVISION



SHL: 1572' FNL & 1955' FEL  
NAD 27  
N: 408119.99  
E: 782461.80  
LAT: 32.1188767  
LON: 103.4214561  
NAD 83  
N: 408177.98  
E: 823648.46  
LAT: 32.1188767  
LON: 103.4214561

1ST T/P: 1422' FNL & 1650' FEL  
NAD 27  
N: 408271.87  
E: 782765.45  
LAT: 32.1192871  
LON: 103.4204713  
NAD 83  
N: 408329.87  
E: 823952.10  
LAT: 32.1192871  
LON: 103.4204713

NOTES:  
1. COORDINATES AND BEARINGS ARE BASED ON LAMBERT CONICAL PROJECTION OF THE STATE PLANE COORDINATE SYSTEM NAD 83, CORRS 96, NEW MEXICO EAST ZONE WITH A CONVERGENCE ANGLE OF 0.53778259 AND DISTANCES ARE OF GRID VALUE WITH A CENTRAL COMBINED SCALE FACTOR OF 0.99985905. THE POSITIONAL TOLERANCE OF THIS SURVEY EXCEEDS THE REQUIREMENTS FOR A CONSTRUCTION SURVEY.  
2. SCALE 1" = 2000'

LAST T/P & BHL: 100' FSL & 1650' FEL  
NAD 27  
N: 399231.04  
E: 782841.34  
LAT: 32.0944350  
LON: 103.4204721  
NAD 83  
N: 399288.80  
E: 824028.41  
LAT: 32.0944350  
LON: 103.4204721

OPERATOR CERTIFICATION

I hereby certify that the information contained herein is true and complete to the best of my knowledge and belief, and that this organization either owns a working interest or unleased mineral interest in the land including the proposed bottom hole location or has a right to drill this well at this location pursuant to a contract with an owner of such a mineral or working interest, or to a voluntary pooling agreement or compulsory pooling order heretofore entered by the division.

Brenda Rathjen

8/28/18

Signature

Date

Brenda F. Rathjen

Printed Name

August 28, 2018

Date

SURVEYOR CERTIFICATION

I hereby certify that the well location shown on this plat was plotted from field notes of actual surveys made by me or under my supervision, and that the same is true and correct to the best of my belief.

DECEMBER 8, 2017

Date Surveyed

Signature & Seal of Professional Surveyor

Signature Date

8/28/2018

Certificate No. WILSON D. WATSON JR.

P.L.S. #3959  
WON17-1298-00, FILE: 1.PROJECTS\WATSON\1298-00

WATSON PROFESSIONAL GROUP INC