

DISTRICT I
1625 N. French Dr., Hobbs, NM 88240

DISTRICT II
811 South First, Artesia, NM 88210

DISTRICT III
1000 Rio Brazos Rd., Artec, NM 87410

DISTRICT IV
2040 South Pacheco, Santa Fe, NM 87505

State of New Mexico
Energy, Minerals and Natural Resources Department

Form C-102
Revised August 1, 2011
HOBBES OLD
Submit one copy to Appropriate District Office

OIL CONSERVATION DIVISION FEB 28 2019

1220 South St. Francis Dr.
Santa Fe, New Mexico 87505

RECEIVED
AMENDED REPORT

WELL LOCATION AND ACREAGE DEDICATION PLAT

API Number 30-025-45660	Pool Code 90340	Pool Name FARVIEW MILLS BONE SPRING
Property Code 325019	Property Name PITCHBLEND FED 24-25	Well Number 452H
GRID No. 162928	Operator Name ENERGEN RESOURCES CORPORATION	Elevation 3348'

Surface Location

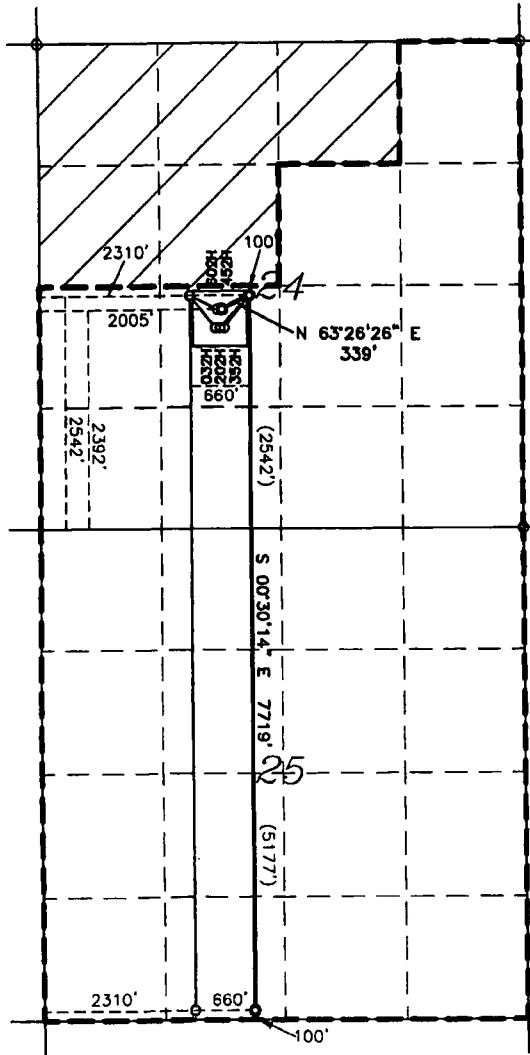
UL or lot No.	Section	Township	Range	Lot Idn	Feet from the	North/South line	Feet from the	East/West line	County
K	24	25-S	34-E	K	2392	SOUTH	2005	WEST	LEA

Bottom Hole Location If Different From Surface

UL or lot No.	Section	Township	Range	Lot Idn	Feet from the	North/South line	Feet from the	East/West line	County
N	25	25-S	34-E	N	100	SOUTH	2310	WEST	LEA

Dedicated Acres	Joint or Infill	Consolidation Code	Order No.
240			

NO ALLOWABLE WILL BE ASSIGNED TO THIS COMPLETION UNTIL ALL INTERESTS HAVE BEEN CONSOLIDATED OR A NON-STANDARD UNIT HAS BEEN APPROVED BY THE DIVISION



SHL: 2392' FSL & 2005' FWL
NAD 27
N: 406790.79
E: 781148.51
LAT: 32.1152536
LON: 103.4257337
NAD 83
N: 406848.73
E: 822335.21
LAT: 32.1152536
LON: 103.4257337

1ST T/P: 2542' FSL & 2310' FWL
NAD 27
N: 406942.54
E: 781452.11
LAT: 32.1156637
LON: 103.4247490
NAD 83
N: 407000.49
E: 822638.81
LAT: 32.1156637
LON: 103.4247490

NOTES:
1. COORDINATES AND BEARINGS ARE BASED ON LAMBERT CONICAL PROJECTION OF THE STATE PLANE COORDINATE SYSTEM NAD 83, CORRS 96, NEW MEXICO EAST ZONE WITH A CONVERGENCE ANGLE OF 0.53778259 AND DISTANCES ARE OF GRID VALUE WITH A CENTRAL COMBINED SCALE FACTOR OF 0.99985905. THE POSITIONAL TOLERANCE OF THIS SURVEY EXCEEDS THE REQUIREMENTS FOR A CONSTRUCTION SURVEY.
2. SCALE 1" = 2000'

LAST T/P & BHL: 100' FSL & 2310' FWL
NAD 27
N: 399223.82
E: 781519.65
LAT: 32.0944458
LON: 103.4247399
NAD 83
N: 399281.56
E: 822706.71
LAT: 32.0944458
LON: 103.4247399

OPERATOR CERTIFICATION

I hereby certify that the information contained herein is true and complete to the best of my knowledge and belief, and that this organization either owns a working interest or unleased mineral interest in the land including the proposed bottom hole location or has a right to drill this well at this location pursuant to a contract with an owner of such a mineral or working interest, or to a voluntary pooling agreement or compulsory pooling order heretofore entered by the division.

Brenda Rathjen 8/28/18

Signature Date

Brenda F. Rathjen

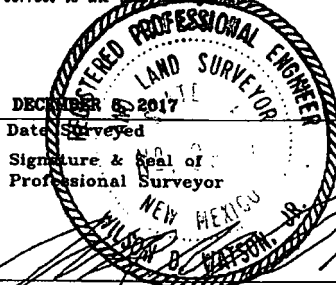
Printed Name

August 28, 2018

Date

SURVEYOR CERTIFICATION

I hereby certify that the well location shown on this plat was plotted from field notes of actual surveys made by me or under my supervision, and that the same is true and correct to the best of my knowledge and belief.



Signature Date JULY 12, 2018

Certificate No. WILSON D. WATSON JR.
P.L.S. #3959
WATSON PROFESSIONAL GROUP INC

WON7-1293-00, FILE: T-PROJECTS\NM\LEA\1245 R35E