

DISTRICT I  
1625 N. French Dr., Hobbs, NM 88240

DISTRICT II  
811 South First, Artesia, NM 88210

DISTRICT III  
1000 Rio Brazos Rd., Artesia, NM 87410

DISTRICT IV  
2040 South Pacheco, Santa Fe, NM 87505

State of New Mexico  
Energy, Minerals and Natural Resources Department

Form C-102  
Revised August 1, 2011  
Submit one copy to Appropriate  
District Office

OIL CONSERVATION DIVISION  
1220 South St. Francis Dr.  
Santa Fe, New Mexico 87505

☐ AMENDED REPORT

WELL LOCATION AND ACREAGE DEDICATION PLAT

API Number <b>30-025 - 45669</b>	Pool Code <b>17980</b>	Pool Name <b>DAGIE BRAW, WOLFCAMP</b>
Property Code <b>325021</b>	Property Name <b>PITCHBLEND FED 19-30</b>	
OGRID No. <b>162928</b>	Operator Name <b>ENERGEN RESOURCES CORPORATION</b>	
		Well Number <b>608H</b>
		Elevation <b>3329'</b>

Surface Location

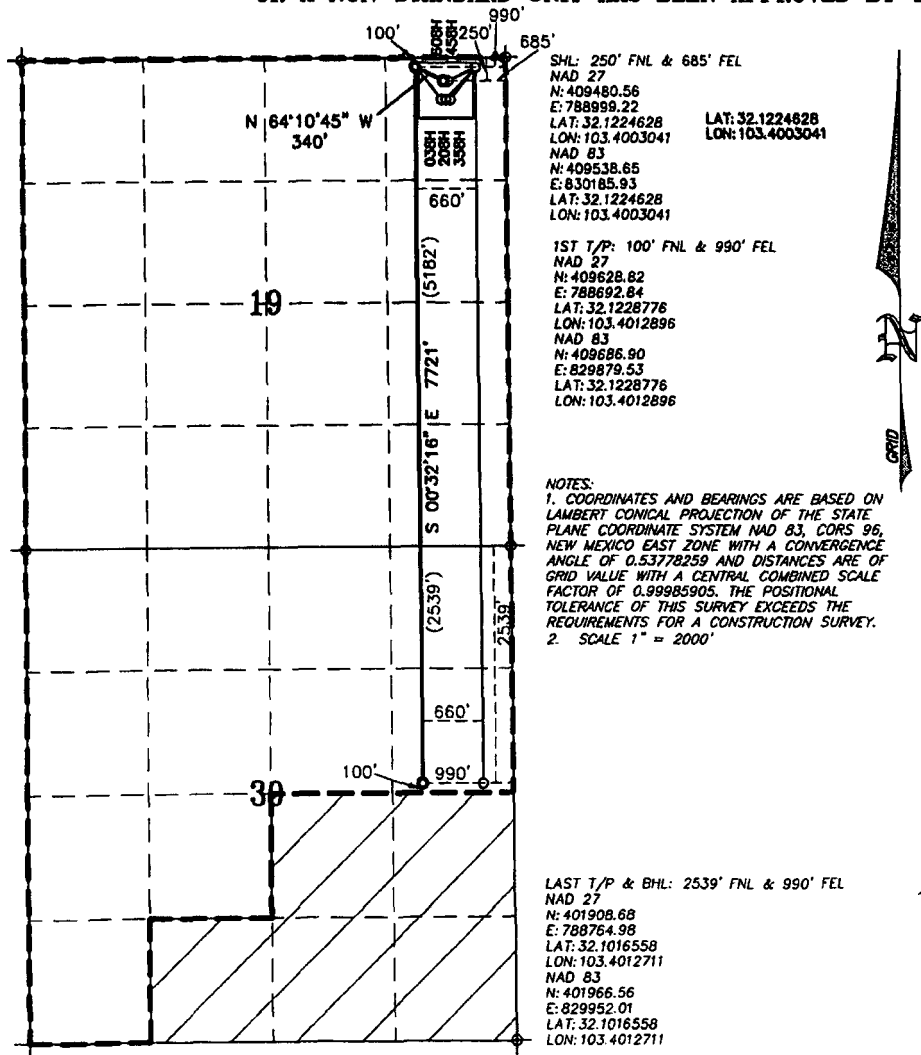
UL or lot No.	Section	Township	Range	Lot Idn	Feet from the	North/South line	Feet from the	East/West line	County
A	19	25-S	35-E	A	250	NORTH	685	EAST	LEA

Bottom Hole Location If Different From Surface

UL or lot No.	Section	Township	Range	Lot Idn	Feet from the	North/South line	Feet from the	East/West line	County
H	30	25-S	35-E	H	2539	NORTH	990	EAST	LEA

Dedicated Acres <b>240</b>	Joint or Infill	Consolidation Code	Order No.
-------------------------------	-----------------	--------------------	-----------

NO ALLOWABLE WILL BE ASSIGNED TO THIS COMPLETION UNTIL ALL INTERESTS HAVE BEEN CONSOLIDATED  
OR A NON-STANDARD UNIT HAS BEEN APPROVED BY THE DIVISION



OPERATOR CERTIFICATION

I hereby certify that the information contained herein is true and complete to the best of my knowledge and belief, and that this organization either owns a working interest or unleased mineral interest in the land including the proposed bottom hole location or has a right to drill this well at this location pursuant to a contract with an owner of such a mineral or working interest, or to a voluntary pooling agreement or compulsory pooling order heretofore entered by the division.

*Brenda Rathjen* 8/28/18

Signature Date  
Brenda F. Rathjen  
Printed Name  
August 28, 2018  
Date

SURVEYOR CERTIFICATION

I hereby certify that the well location shown on this plat was plotted from field notes of actual surveys made by me or under my supervision, and that the same is true and correct to the best of my belief.

DECEMBER 8, 2018  
Date Surveyed  
Signature & Seal of 02959  
Professional Surveyor  
Signature Date  
12, 2018  
Certificate No. WILSON D. WATSON JR.  
P.L.S. #3959  
WATSON PROFESSIONAL GROUP INC