

DISTRICT I
1825 N. French Dr., Hobbs, NM 88240
DISTRICT II
811 South First, Artesia, NM 88210
DISTRICT III
1000 Rio Brazos Rd., Artesia, NM 87410
DISTRICT IV
2040 South Pacheco, Santa Fe, NM 87505

State of New Mexico
Energy, Minerals and Natural Resources Department

Form C-102
Revised August 1, 2011

Submit one copy to Appropriate
District Office

OIL CONSERVATION DIVISION

1220 South St. Francis Dr.
Santa Fe, New Mexico 87505

☐ AMENDED REPORT

WELL LOCATION AND ACREAGE DEDICATION PLAT

API Number 30-025-45652	Pool Code 97779	Pool Name DOGIE DRAW; DELAWARE LWR BRUSHY CANYON
Property Code 325021	Property Name PITCHBLEND 19-30 (FED)	Well Number 037H
OGRID No. 182928	Operator Name ENERGEN RESOURCES CORPORATION	Elevation 3333'

Surface Location

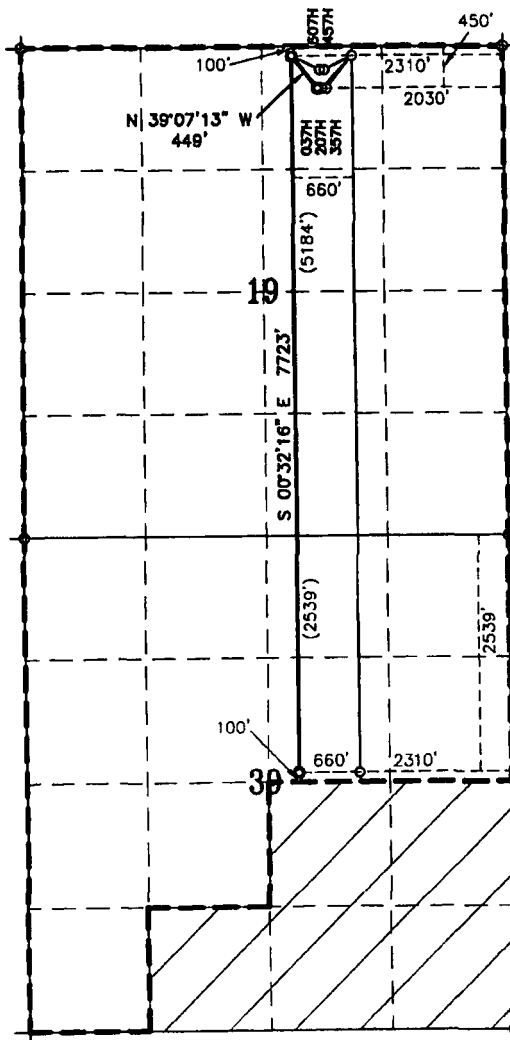
UL or lot No.	Section	Township	Range	Lot Idn	Feet from the	North/South line	Feet from the	East/West line	County
B	19	25-S	35-E	B	450	NORTH	2030	EAST	LEA

Bottom Hole Location If Different From Surface

UL or lot No.	Section	Township	Range	Lot Idn	Feet from the	North/South line	Feet from the	East/West line	County
G	30	25-S	35-E	G	2539	NORTH	2310	EAST	LEA

Dedicated Acres	Joint or Infill	Consolidation Code	Order No.
240			

NO ALLOWABLE WILL BE ASSIGNED TO THIS COMPLETION UNTIL ALL INTERESTS HAVE BEEN CONSOLIDATED
OR A NON-STANDARD UNIT HAS BEEN APPROVED BY THE DIVISION



SHL: 450' FNL & 2030' FEL
NAD 27
N: 409272.94
E: 787656.18
LAT: 32.1219240
LON: 103.4046477
NAD 83
N: 409331.01
E: 828842.87
LAT: 32.1219240
LON: 103.4046477

1ST T/P: 100' FNL & 2310' FEL
NAD 27
N: 409621.32
E: 787372.87
LAT: 32.1228883
LON: 103.4055531
NAD 83
N: 409679.39
E: 828559.54
LAT: 32.1228883
LON: 103.4055531

NOTES:
1. COORDINATES AND BEARINGS ARE BASED ON
LAMBERT CONICAL PROJECTION OF THE STATE
PLANE COORDINATE SYSTEM NAD 83, CORRS 96,
NEW MEXICO EAST ZONE WITH A CONVERGENCE
ANGLE OF 0.53778259 AND DISTANCES ARE OF
GRID VALUE WITH A CENTRAL COMBINED SCALE
FACTOR OF 0.99985905. THE POSITIONAL
TOLERANCE OF THIS SURVEY EXCEEDS THE
REQUIREMENTS FOR A CONSTRUCTION SURVEY.
2. SCALE 1" = 2000'

LAST T/P & BHL: 2539' FNL & 2310' FEL
NAD 27
N: 401899.12
E: 787445.03
LAT: 32.1016608
LON: 103.4055337
NAD 83
N: 401956.99
E: 828632.05
LAT: 32.1016608
LON: 103.4055337

OPERATOR CERTIFICATION

I hereby certify that the information contained herein is true and complete to the best of my knowledge and belief, and that this organization either owns a working interest or unleased mineral interest in the land including the proposed bottom hole location or has a right to drill this well at this location pursuant to a contract with an owner of such a mineral or working interest, or to a voluntary pooling agreement or compulsory pooling order heretofore entered by the division.

Brenda F. Rathjen 8/28/18

Signature Date

Brenda F. Rathjen

Printed Name

August 28, 2018

Date

SURVEYOR CERTIFICATION

I hereby certify that the well location shown on this plat was plotted from field notes of actual surveys made by me or under my supervision, and that the same is true and correct to the best of my belief.

DECEMBER 8, 2018

Date Survey

Signature

Professional Surveyor

State of New Mexico

Signature

Date

July 13, 2018

Certificate

Watson Professional Group Inc.

Watson Professional Group Inc.

Watson Professional Group Inc.

Watson Professional Group Inc.

Watson Professional Group Inc.

Watson Professional Group Inc.

Watson Professional Group Inc.

Watson Professional Group Inc.