

DISTRICT I
1826 N. French Dr., Hobbs, NM 88240

DISTRICT II
811 South First, Artesia, NM 88210

DISTRICT III
1000 Rio Brazos Rd., Artec, NM 87410

DISTRICT IV
2040 South Pacheco, Santa Fe, NM 87505

State of New Mexico
Energy, Minerals and Natural Resources Department

OIL CONSERVATION DIVISION

1820 South St. Francis Dr.
Santa Fe, New Mexico 87505

Form C-102

Revised August 1, 2011

Submit one copy to Appropriate
District Office

HOBBS OCD

FEB 28 2019

RECEIVED

☐ AMENDED REPORT

WELL LOCATION AND ACREAGE DEDICATION PLAT

API Number 30-025-45691	Pool Code 97779	Pool Name 0004E DRAW; LWR BRUSHY CANYON DELAWARE
Property Code 325019	Property Name PITCHBLEND FED 24-25	Well Number 033H
GRID No. 162928	Operator Name ENERGEN RESOURCES CORPORATION	Elevation 3350'

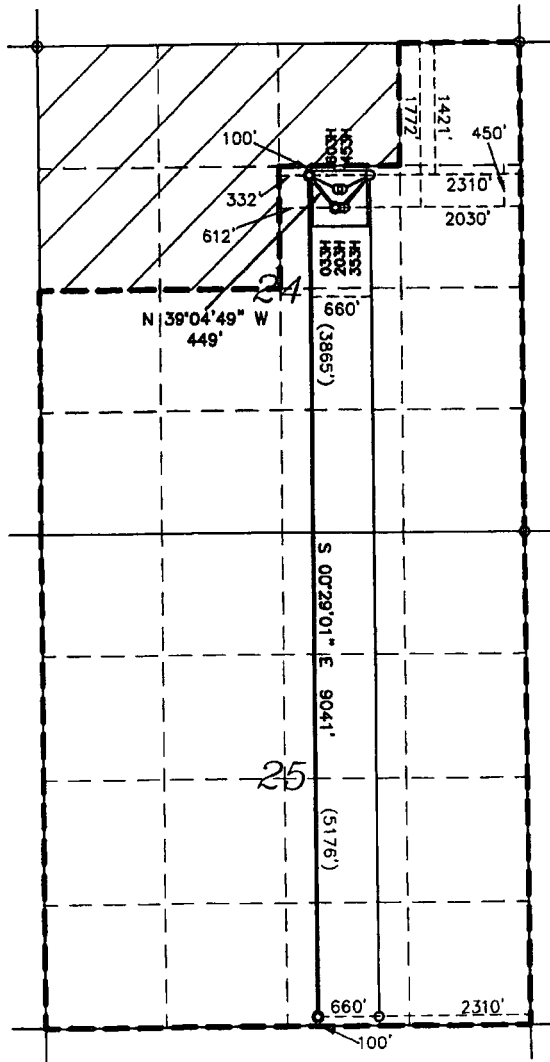
Surface Location

UL or lot No.	Section	Township	Range	Lot Idn	Feet from the	North/South line	Feet from the	East/West line	County
G	24	25-S	34-E	G	1772	NORTH	2030	EAST	LEA

Bottom Hole Location If Different From Surface

UL or lot No.	Section	Township	Range	Lot Idn	Feet from the	North/South line	Feet from the	East/West line	County
0	25	25-S	34-E	0	100	SOUTH	2310	EAST	LEA
Dedicated Acres 280	Joint or Infill	Consolidation Code	Order No.						

NO ALLOWABLE WILL BE ASSIGNED TO THIS COMPLETION UNTIL ALL INTERESTS HAVE BEEN CONSOLIDATED
OR A NON-STANDARD UNIT HAS BEEN APPROVED BY THE DIVISION



SHL: 1772' FNL & 2030' FEL
NAD 27
N: 407919.53
E: 782388.27
LAT: 32.1183274
LON: 103.4216991
NAD 83
N: 407977.52
E: 823574.93
LAT: 32.1183274
LON: 103.4216991

1ST T/P: 1421' FNL & 2310' FEL
NAD 27
N: 408267.78
E: 782105.47
LAT: 32.1192912
LON: 103.4226030
NAD 83
N: 408325.77
E: 823292.12
LAT: 32.1192912
LON: 103.4226030

NOTES:
1. COORDINATES AND BEARINGS ARE BASED ON
LAMBERT CONICAL PROJECTION OF THE STATE
PLANE COORDINATE SYSTEM NAD 83, CORRS 95,
NEW MEXICO EAST ZONE WITH A CONVERGENCE
ANGLE OF 0.53778259 AND DISTANCES ARE OF
GRID VALUE WITH A CENTRAL COMBINED SCALE
FACTOR OF 0.99985905. THE POSITIONAL
TOLERANCE OF THIS SURVEY EXCEEDS THE
REQUIREMENTS FOR A CONSTRUCTION SURVEY.
2. SCALE 1" = 2000'

LAST T/P & BHL: 100' FSL & 2310' FEL
NAD 27
N: 399227.44
E: 782181.35
LAT: 32.0944404
LON: 103.4226032
NAD 83
N: 399285.19
E: 823368.41
LAT: 32.0944404
LON: 103.4226032

OPERATOR CERTIFICATION

I hereby certify that the information contained herein is true and complete to the best of my knowledge and belief, and that this organization either owns a working interest or unleased mineral interest in the land including the proposed bottom hole location or has a right to drill this well at this location pursuant to a contract with an owner of such a mineral or working interest, or to a voluntary pooling agreement or compulsory pooling order heretofore entered by the division.

Brenda Rathjen 8/28/18

Signature Date

Brenda F. Rathjen

Printed Name
August 28, 2018

Date

SURVEYOR CERTIFICATION

I hereby certify that the well location shown on this plat was plotted from field notes of actual surveys made by me or under my supervision, and that the information is true and correct to the best of my knowledge and belief.

WILSON D. WATSON JR.
REGISTERED PROFESSIONAL SURVEYOR
STATE OF NEW MEXICO
No. 3959
Date Surveyed
Signature & Seal of Professional Surveyor
Signature Date JULY 12, 2018

Certificate No. WILSON D. WATSON JR.
P.L.S. #3959
WATSON PROFESSIONAL GROUP INC