

DISTRICT I
1625 N. FRENCH DR., HOHES, NM 88240
Phone: (575) 393-6161 Fax: (575) 393-0720

DISTRICT II
811 S. FIRST ST., ARTESIA, NM 88210
Phone: (575) 748-1533 Fax: (575) 748-9720

DISTRICT III
1000 RIO BRAZOS RD., AZTEC, NM 87410
Phone: (505) 334-6176 Fax: (505) 334-6170

DISTRICT IV
1820 S. ST. FRANCIS DR., SANTA FE, NM 87505
Phone: (505) 476-3460 Fax: (505) 476-3465

State of New Mexico
Energy, Minerals & Natural Resources Department
OIL CONSERVATION DIVISION
1220 SOUTH ST. FRANCIS DR.
Santa Fe, New Mexico 87503

Form C-102
Revised August 1, 2011
Submit one copy to appropriate
District Office

☐ AMENDED REPORT

WELL LOCATION AND ACREAGE DEDICATION

API Number 30-025-46886	Pool Code 98094	Pool Name BOBCAT DRAW UPR WOLFCAMP
Property Code 325475	Property Name STRANGER 33 FED	Well Number 11H
OGRID No. 6137	Operator Name DEVON ENERGY PRODUCTION COMPANY, L.P.	Elevation 3330.2'

Surface Location

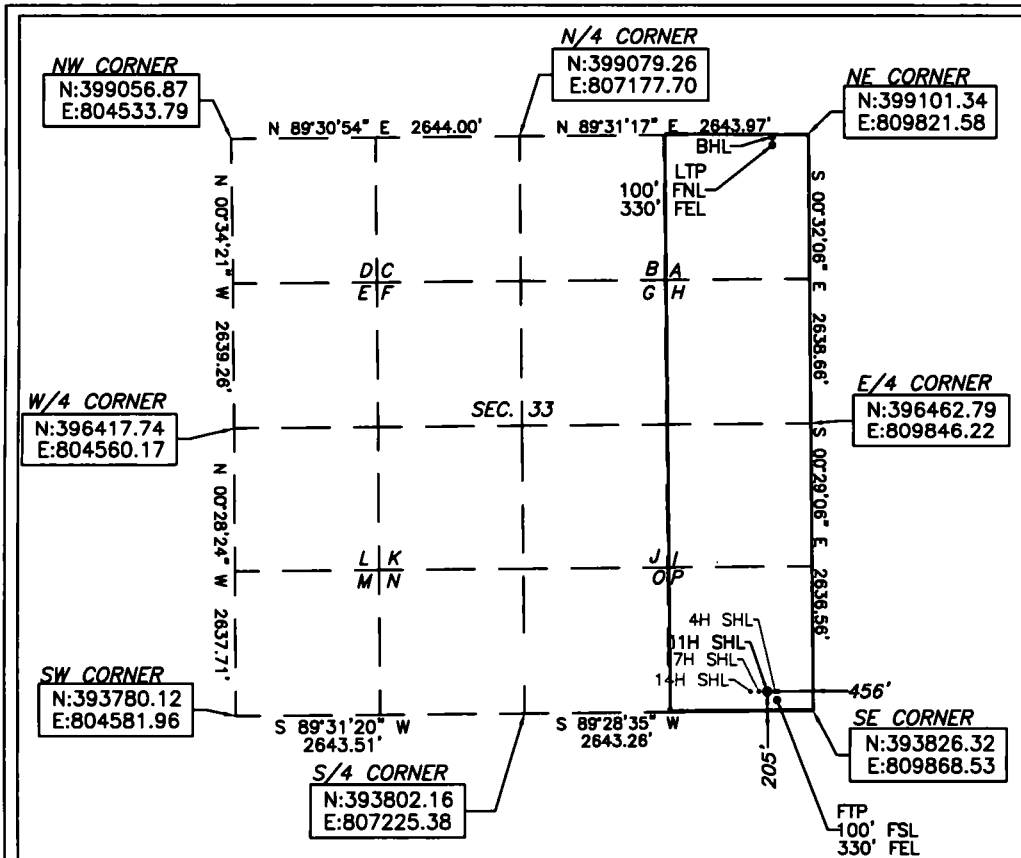
UL or lot No.	Section	Township	Range	Lot Idn	Feet from the	North/South line	Feet from the	East/West line	County
P	33	25-S	34-E	P	205	SOUTH	456	EAST	LEA

Bottom Hole Location If Different From Surface

UL or lot No.	Section	Township	Range	Lot Idn	Feet from the	North/South line	Feet from the	East/West line	County
A	33	25-S	34-E	A	20	NORTH	330	EAST	LEA

Dedicated Acres	Joint or Infill	Consolidation Code	Order No.
160			

NO ALLOWABLE WILL BE ASSIGNED TO THIS COMPLETION UNTIL ALL INTERESTS HAVE BEEN CONSOLIDATED
OR A NON-STANDARD UNIT HAS BEEN APPROVED BY THE DIVISION



Note: All bearings recited herein are based on the New Mexico State Plane Coordinate System, NAD 83, New Mexico East Zone 3001, US Survey Grid, all distances are grid.

STRANGER 33 FED 11H
ELEV: 3330.2'
LAT: 32.0803039
LONG: -103.4678066

FIRST TAKE POINT
LAT: 32.0800157
LONG: -103.4673997

BOTTOM OF HOLE
LAT: 32.0941868
LONG: -103.4674143

LAST TAKE POINT
LAT: 32.0939669
LONG: -103.4674140

OPERATOR CERTIFICATION

I hereby certify that the information herein is true and complete to the best of my knowledge and belief, and that this organization either owns a working interest or unleased mineral interest in the land including the proposed bottom hole location or has a right to drill this well at this location pursuant to a contract with an owner of such mineral or working interest, or to a voluntary pooling agreement or a compulsory pooling order heretofore entered by the division.

Rebecca Deal 10/25/2018
Signature Date
Rebecca Deal, Regulatory Analyst
Printed Name
rebecca.deal@dmv.com
E-mail Address

SURVEYOR CERTIFICATION

I hereby certify that the well location shown on this plat was plotted from field notes of actual surveys made by me or under my supervision, and that the same is true and correct to the best of my belief.

07/2018
Date of Survey
Signature & Seal of Professional Surveyor

B. L. LAMAN
NEW MEXICO
22404
PROFESSIONAL SURVEYOR
08/16/18
Certificate No. 22404 B.L. LAMAN
Date of Survey: 7/25/18 DRAWN BY: CM