

DISTRICT I
1626 N. FRENCH DR., HOHES, NM 88240
Phone: (505) 893-6161 Fax: (505) 893-0720

DISTRICT II
811 S. FIRST ST., ARTESIA, NM 88210
Phone: (505) 745-1283 Fax: (505) 745-0720

DISTRICT III
1000 RIO BRAZOS RD., AZTEC, NM 87410
Phone: (505) 334-6176 Fax: (505) 334-6170

DISTRICT IV
1220 S. ST. FRANCIS DR., SANTA FE, NM 87505
Phone: (505) 476-3460 Fax: (505) 476-3462

State of New Mexico
Energy, Minerals & Natural Resources Department
OIL CONSERVATION DIVISION
1220 SOUTH ST. FRANCIS DR.
Santa Fe, New Mexico 87505

Form C-102

Revised August 1, 2011

Submit one copy to appropriate
District Office

☐ AMENDED REPORT

WELL LOCATION AND ACREAGE DEDICATION PLAT

API Number 70-024-45880	Pool Code 98094	Pool Name BOBCAT DRAW; UPR WOLFCAMP
Property Code 325V3	Property Name STRANGER 33 FED	Well Number 5H
OGRID No. 6137	Operator Name DEVON ENERGY PRODUCTION COMPANY, L.P.	Elevation 3330.0'

Surface Location

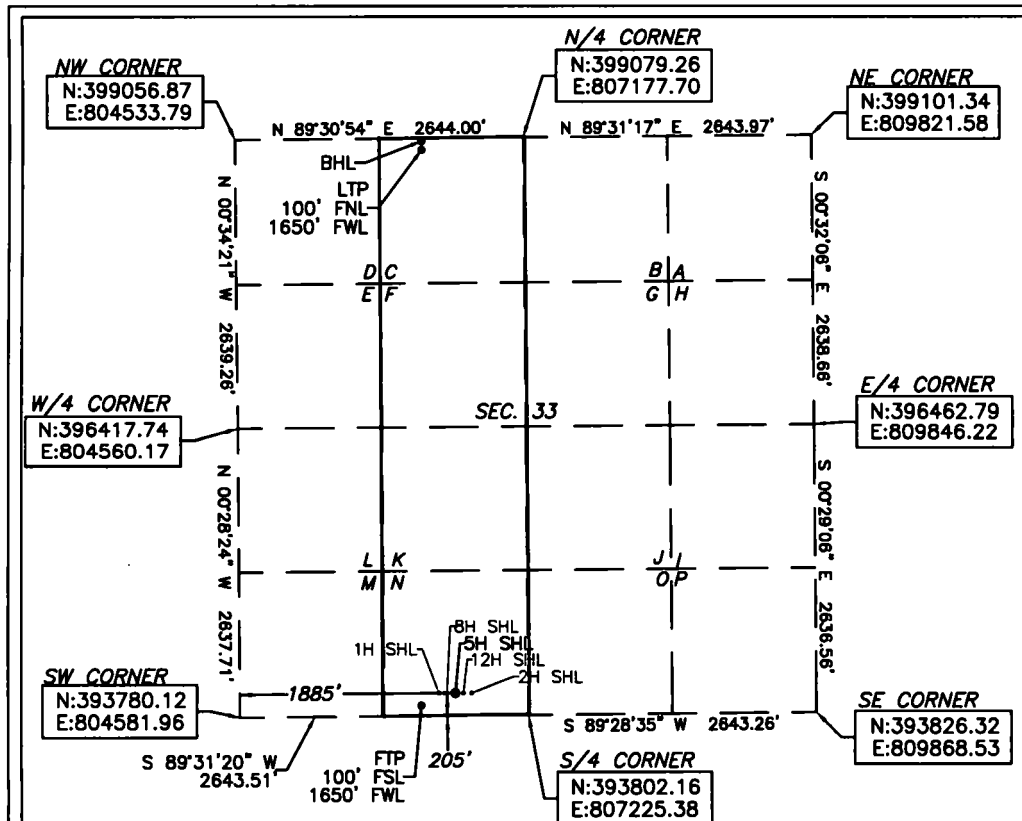
UL or lot No.	Section	Township	Range	Lot Idn	Feet from the	North/South line	Feet from the	East/West line	County
N	33	25-S	34-E		205	SOUTH	1885	WEST	LEA

Bottom Hole Location If Different From Surface

UL or lot No.	Section	Township	Range	Lot Idn	Feet from the	North/South line	Feet from the	East/West line	County
C	33	25-S	34-E		20	NORTH	1650	WEST	LEA

Dedicated Acres 160	Joint or Infill	Consolidation Code	Order No.
-------------------------------	-----------------	--------------------	-----------

NO ALLOWABLE WILL BE ASSIGNED TO THIS COMPLETION UNTIL ALL INTERESTS HAVE BEEN CONSOLIDATED
OR A NON-STANDARD UNIT HAS BEEN APPROVED BY THE DIVISION



Note: All bearings recited herein
are based on the New Mexico
State Plane Coordinate System,
NAD 83, New Mexico East Zone
3001, US Survey Feet, all
distances are grid.

STRANGER 33 FED 5H
ELEV: 3330.0'
LAT: 32.0802962
LONG: -103.4773169

FIRST TAKE POINT
LAT: 32.0800073
LONG: -103.4780755

BOTTOM OF HOLE
LAT: 32.0941831
LONG: -103.4780956

LAST TAKE POINT
LAT: 32.0939632
LONG: -103.4780951

OPERATOR CERTIFICATION

I hereby certify that the information
herein is true and complete to the best of
my knowledge and belief, and that this
organization either owns a working interest
or unleased mineral interest in the land
including the proposed bottom hole location
or has a right to drill this well at this
location pursuant to a contract with an
owner of such mineral or working interest,
or to a voluntary pooling agreement or a
compulsory pooling order heretofore entered
by the division.

Rebecca Deal 10/25/2018
Signature Date

Rebecca Deal, Regulatory Analyst
Printed Name

rebecca.deal@dvn.com
E-mail Address

SURVEYOR CERTIFICATION

I hereby certify that the well location
shown on this plat was plotted from field
notes of actual surveys made by me or
under my supervision, and that the same is
true and correct to the best of my belief.

07/2018

Date of Survey

Signature & Seal of Professional Surveyor



08/01/18

Certificate No. 22404 B.L. LAMAN
Date of Survey: 7/25/18 DRAWN BY: CM