

District I  
1625 N. French Dr., Hobbs, NM 88240  
Phone: (575) 393-6161 Fax: (575) 393-0720

District II  
811 S. First St., Artesia, NM 88210  
Phone: (575) 748-1283 Fax: (575) 748-9720

District III  
1000 Rio Brazos Road, Aztec, NM 87410  
Phone: (505) 334-6178 Fax: (505) 334-6170

District IV  
1220 S. St. Francis Dr., Santa Fe, NM 87505  
Phone: (505) 476-3460 Fax: (505) 476-3462

State of New Mexico  
Energy, Minerals & Natural Resources Department  
OIL CONSERVATION DIVISION  
1220 South St. Francis Dr.  
Santa Fe, NM 87505

Form C-102  
Revised August 1, 2011  
Submit one copy to appropriate  
District Office  
AMENDED REPORT

WELL LOCATION AND ACREAGE DEDICATION PLAT

1 API Number <b>30-025-44667</b>		2 Pool Code <b>98094</b>		3 Pool Name <b>POPCAT DRAW; UPPER WOLFCAMP</b>	
4 Property Code <b>30884</b>		5 Property Name <b>GREEN WAVE 20-17 FED</b>			6 Well Number <b>1H</b>
7 OGRID No. <b>6137</b>		8 Operator Name <b>DEVON ENERGY PRODUCTION COMPANY, L.P.</b>			9 Elevation <b>3355.6</b>

10 Surface Location

UL or lot no.	Section	Township	Range	Lot Idn	Feet from the	North/South line	Feet from the	East/West line	County
<b>E</b>	<b>20</b>	<b>26 S</b>	<b>34 E</b>		<b>2394</b>	<b>NORTH</b>	<b>299</b>	<b>WEST</b>	<b>LEA</b>

11 Bottom Hole Location If Different From Surface

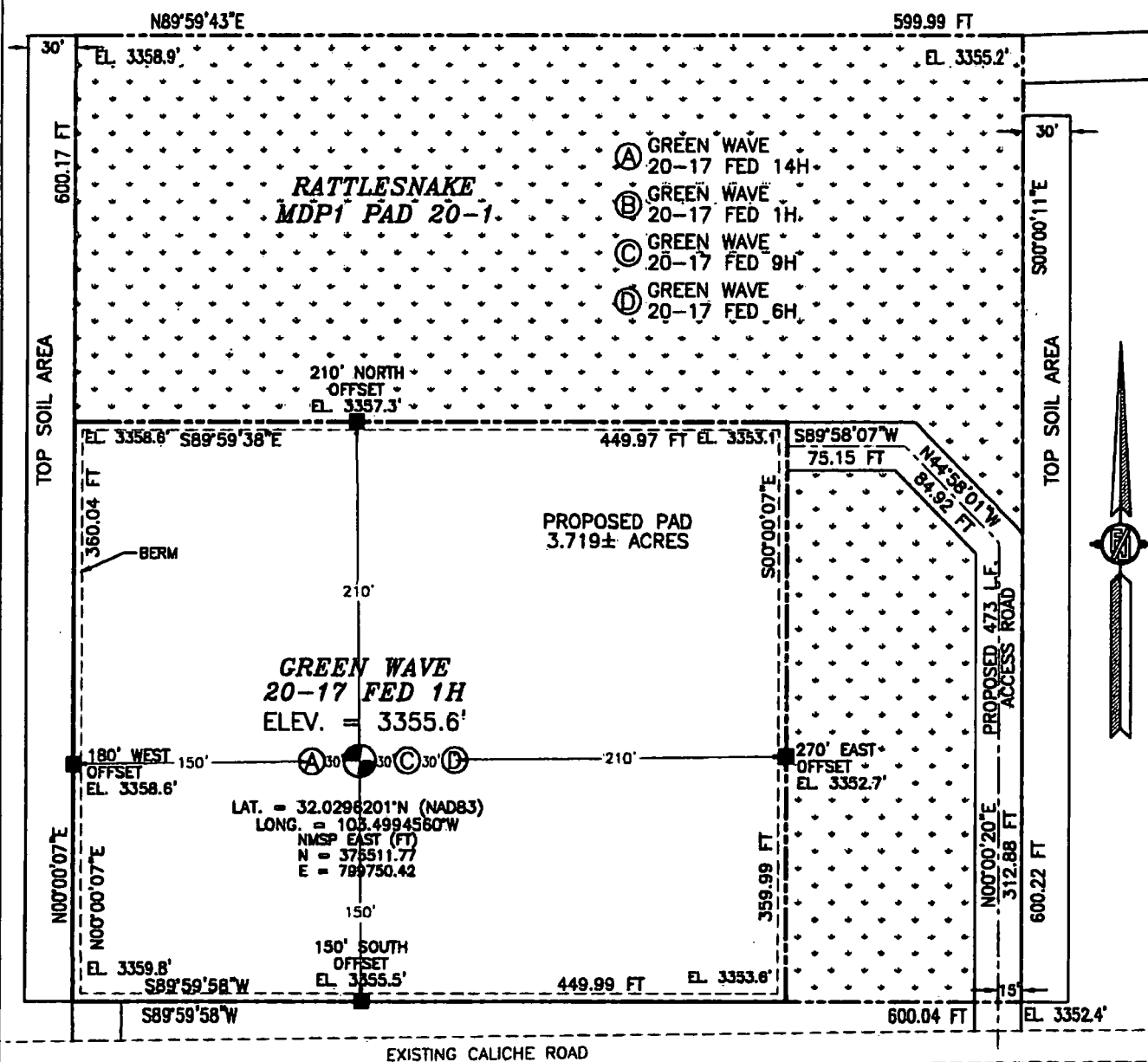
UL or lot no.	Section	Township	Range	Lot Idn	Feet from the	North/South line	Feet from the	East/West line	County
<b>D</b>	<b>17</b>	<b>26 S</b>	<b>34 E</b>		<b>20</b>	<b>NORTH</b>	<b>360</b>	<b>WEST</b>	<b>LEA</b>

12 Dedicated Acres <b>240</b>	13 Joint or Infill	14 Consolidation Code	15 Order No.
----------------------------------	--------------------	-----------------------	--------------

No allowable will be assigned to this completion until all interests have been consolidated or a non-standard unit has been approved by the division.

<p>NW CORNER SEC. 17 LAT. = 32.0506993°N LONG. = 103.5004432°W NMSP EAST (FT) N = 383177.75 E = 799384.71</p> <p>W/4 CORNER SEC. 17 LAT. = 32.0434482°N LONG. = 103.5004355°W NMSP EAST (FT) N = 380539.17 E = 799408.08</p> <p>SECTION CORNER LAT. = 32.0361972°N LONG. = 103.5004293°W NMSP EAST (FT) N = 377302.09 E = 799430.33</p> <p>W/4 CORNER SEC. 20 LAT. = 32.0289377°N LONG. = 103.5004198°W NMSP EAST (FT) N = 375261.22 E = 799453.63</p> <p>SW CORNER SEC. 20 LAT. = 32.0216783°N LONG. = 103.5004145°W NMSP EAST (FT) N = 372620.35 E = 799475.65</p>		<p>N/4 CORNER SEC. 17 LAT. = 32.0506987°N LONG. = 103.4919052°W NMSP EAST (FT) N = 383197.31 E = 802030.69</p> <p>W/4 CORNER SEC. 17 LAT. = 32.0434435°N LONG. = 103.4833713°W NMSP EAST (FT) N = 380579.41 E = 804695.54</p> <p>SECTION CORNER LAT. = 32.0361753°N LONG. = 103.4833607°W NMSP EAST (FT) N = 377835.34 E = 804719.64</p> <p>E/4 CORNER SEC. 20 LAT. = 32.0289285°N LONG. = 103.4833563°W NMSP EAST (FT) N = 375299.06 E = 804742.05</p> <p>SE CORNER SEC. 20 LAT. = 32.0216672°N LONG. = 103.4833470°W NMSP EAST (FT) N = 372637.52 E = 804763.39</p>	
<p>NOTE: LATITUDE AND LONGITUDE COORDINATES ARE SHOWN USING THE NORTH AMERICAN DATUM OF 1983 (NAD83). LISTED NEW MEXICO STATE PLANE EAST COORDINATES ARE GRID (NAD83). BASIS OF BEARING AND DISTANCES USED ARE NEW MEXICO STATE PLANE EAST COORDINATES MODIFIED TO THE SURFACE. ELEVATION VALUES ARE NAVD83.</p> <p>SECTION CORNER LAT. = 32.0361972°N LONG. = 103.5004293°W NMSP EAST (FT) N = 377302.09 E = 799430.33</p> <p>QUARTER CORNER LAT. = 32.0362184°N LONG. = 103.4919125°W NMSP EAST (FT) N = 377830.28 E = 802069.47</p> <p>SECTION CORNER LAT. = 32.0361753°N LONG. = 103.4833607°W NMSP EAST (FT) N = 377835.34 E = 804719.64</p> <p>E/4 CORNER SEC. 20 LAT. = 32.0289285°N LONG. = 103.4833563°W NMSP EAST (FT) N = 375299.06 E = 804742.05</p> <p>SE CORNER SEC. 20 LAT. = 32.0216672°N LONG. = 103.4833470°W NMSP EAST (FT) N = 372637.52 E = 804763.39</p>		<p>12 OPERATOR CERTIFICATION</p> <p>I hereby certify that the information contained herein is true and complete to the best of my knowledge and belief, and that this organization either owns a working interest or leased mineral interest in the land including the proposed bottom hole location or has a right to drill this well at this location pursuant to a contract with an owner of such a mineral or working interest, or to a voluntary pooling agreement or a compulsory pooling order heretofore entered by the division.</p> <p><i>Rebecca Deal</i> 4/24/2019 Signature Date</p> <p>Rebecca Deal, Regulatory Analyst Printed Name</p> <p>rebecca.deal@dm.com E-mail Address</p> <p>13 SURVEYOR CERTIFICATION</p> <p>I hereby certify that the well location shown on this plat was plotted from field notes of actual surveys made by me or under my supervision, and that the same is true and correct to the best of my belief.</p> <p><i>JOSE F. JARAMILLO</i> JULY 20, 2018 Date of Survey</p> <p><i>JOSE F. JARAMILLO</i> Signature and Seal of Professional Surveyor</p> <p>Certificate Number: FIDMONE JARAMILLO, PLS 12797 SURVEY NO. 5401A</p>	

**SECTION 20, TOWNSHIP 26 SOUTH, RANGE 34 EAST, N.M.P.M.  
LEA COUNTY, STATE OF NEW MEXICO  
SITE MAP**



010 50 100 200

SCALE 1" = 100'

**DIRECTIONS TO LOCATION**

FROM HWY 128 AND COUNTY ROAD 2 GO SOUTHWEST APPROX 12.1 MILES TO A LEASE ROAD ON LEFT (SOUTH). TURN SOUTH GO APPROX. 0.6 MILE TO PIPELINE ROAD TURN LEFT (EAST), GO EAST APPROX. 1.8 MILES TO A LEASE ROAD ON RIGHT (SOUTH), TURN SOUTH GO APPROX. 2.5 MILES TO LEASE ROAD ON LEFT (EAST), GO EAST 0.25 MILE, AT SOUTHEAST PAD CORNER GO NORTH 313', THEN NORTHWEST 85', THEN WEST 75' TO THE NORTHEAST PAD CORNER FOR THIS LOCATION.

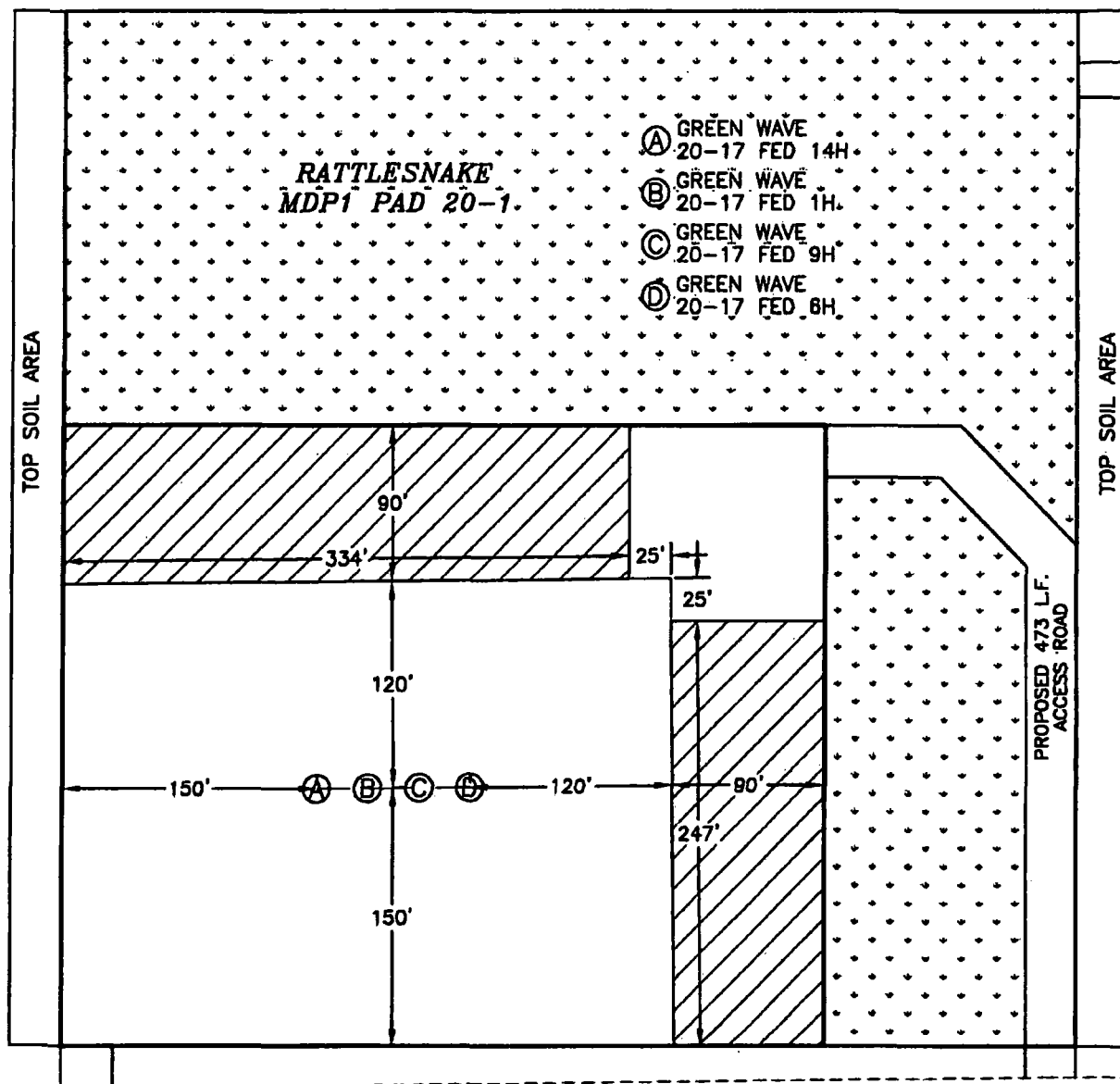
**DEVON ENERGY PRODUCTION COMPANY, L.P.  
GREEN WAVE 20-17 FED 1H  
LOCATED 2394 FT. FROM THE NORTH LINE  
AND 299 FT. FROM THE WEST LINE OF  
SECTION 20, TOWNSHIP 26 SOUTH,  
RANGE 34 EAST, N.M.P.M.  
LEA COUNTY, STATE OF NEW MEXICO**

JULY 20, 2018

SURVEY NO. 6401A

**MADRON SURVEYING, INC.** 301 SOUTH CANAL (375) 234-3341 **CARLSBAD, NEW MEXICO**

SECTION 20, TOWNSHIP 26 SOUTH, RANGE 34 EAST, N.M.P.M.  
LEA COUNTY, STATE OF NEW MEXICO  
INTERIM SITE BUILD PLAN



EXISTING CALICHE ROAD



DENOTES INTERIM PAD  
RECLAMATION AREA



DENOTES GRADING SITE  
RECLAMATION AREA

0 50 100 200  
SCALE 1" = 100'

1.199± ACRES INTERIM PAD RECLAMATION AREA  
4.242± ACRES GRADING SITE RECLAMATION AREA  
2.826± ACRES NON-RECLAIMED AREA  
8.267± ACRES RATTLESNAKE MDP1 PAD 20-1

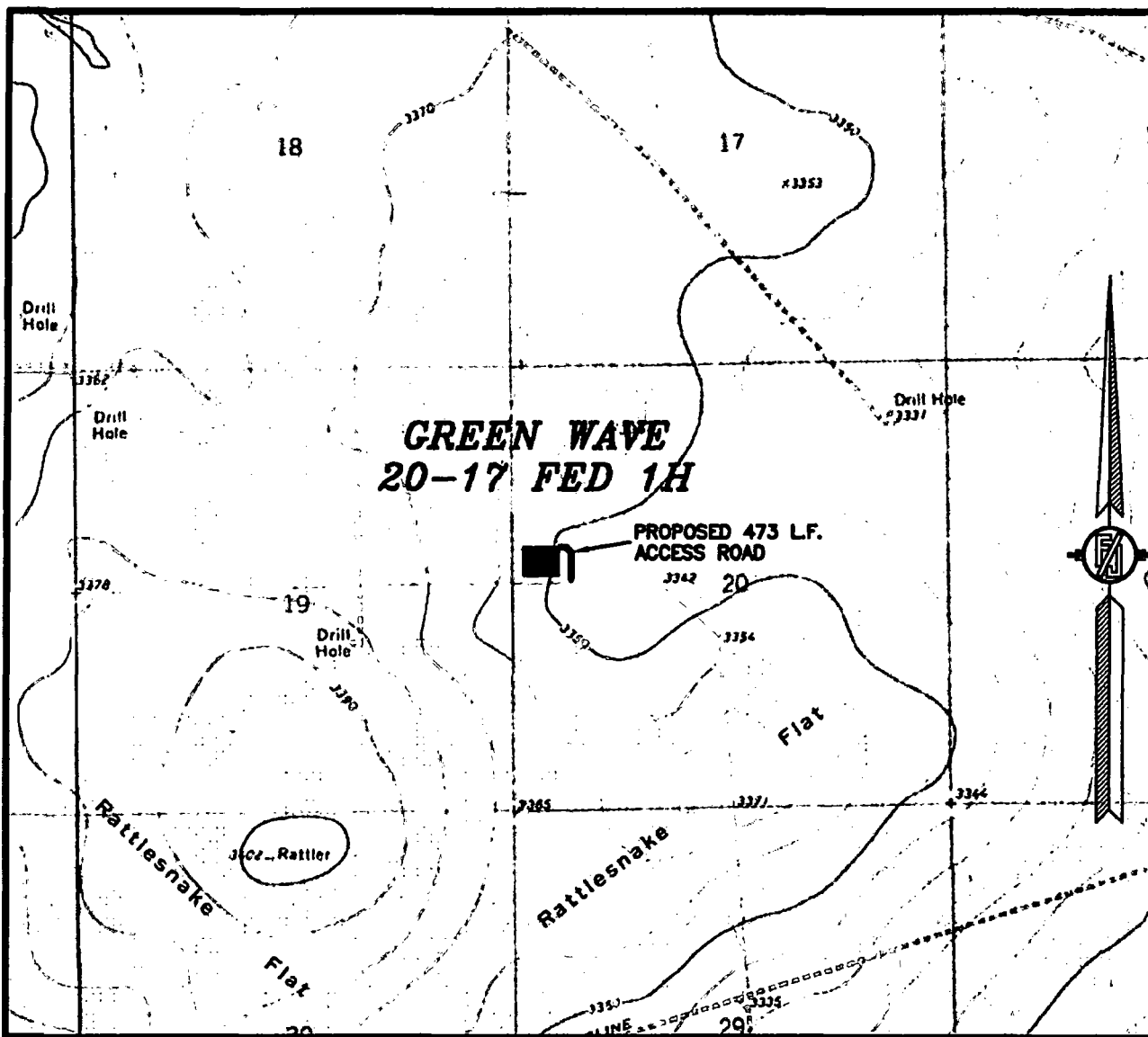
DEVON ENERGY PRODUCTION COMPANY, L.P.  
**GREEN WAVE 20-17 FED 1H**  
LOCATED 2394 FT. FROM THE NORTH LINE  
AND 299 FT. FROM THE WEST LINE OF  
SECTION 20, TOWNSHIP 26 SOUTH,  
RANGE 34 EAST, N.M.P.M.  
LEA COUNTY, STATE OF NEW MEXICO

JULY 20, 2018

SURVEY NO. 6401A

MADRON SURVEYING, INC. 301 SOUTH CANAL CARLSBAD, NEW MEXICO  
(575) 234-3341

20, TOWNSHIP 26 SOUTH, RANGE 34 EAST, N.M.P.M.  
LEA COUNTY, STATE OF NEW MEXICO  
LOCATION VERIFICATION MAP



**USGS QUAD MAP:  
ANDREWS PLACE**

**NOT TO SCALE:**

DEVON ENERGY PRODUCTION COMPANY, L.P.  
GREEN WAVE 20-17 FED 1H

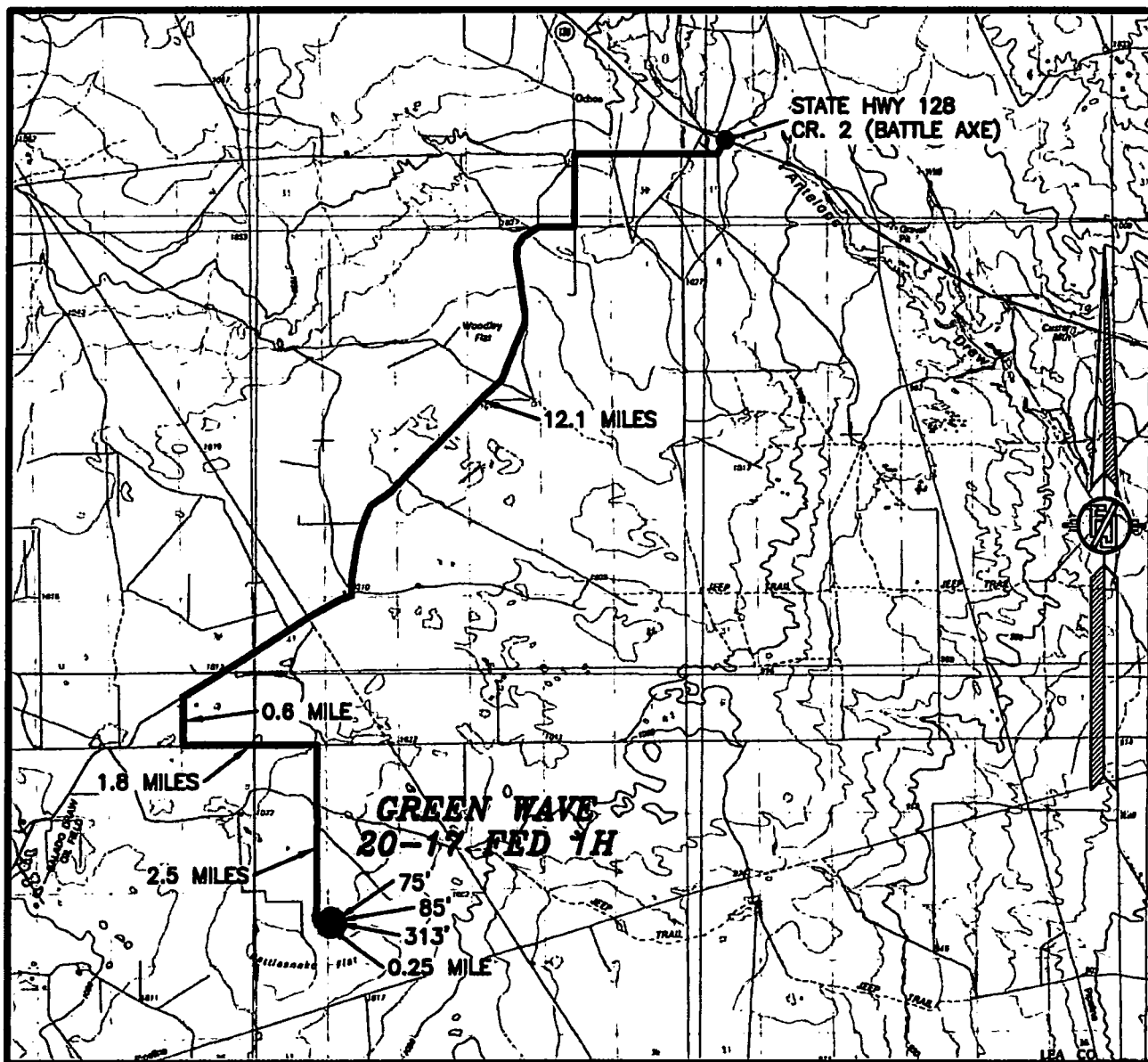
**LOCATED 2394 FT. FROM THE NORTH LINE  
AND 299 FT. FROM THE WEST LINE OF  
SECTION 20, TOWNSHIP 26 SOUTH,  
RANGE 34 EAST, N.M.P.M.  
LEA COUNTY, STATE OF NEW MEXICO**

***JULY 20, 2018***

**SURVEY NO. 5401A**

**MADRON SURVEYING, INC.** 301 SOUTH CANAL  
(575) 234-3341 **CARLSBAD, NEW MEXICO**

**SECTION 20, TOWNSHIP 26 SOUTH, RANGE 34 EAST, N.M.P.M.  
LEA COUNTY, STATE OF NEW MEXICO  
VICINITY MAP**



**DISTANCES IN MILES**

**NOT TO SCALE**

**DIRECTIONS TO LOCATION**

FROM HWY 128 AND COUNTY ROAD 2 GO SOUTHWEST APPROX 12.1 MILES TO A LEASE ROAD ON LEFT (SOUTH). TURN SOUTH GO APPROX. 0.8 MILE TO PIPELINE ROAD TURN LEFT (EAST), GO EAST APPROX. 1.8 MILES TO A LEASE ROAD ON RIGHT (SOUTH), TURN SOUTH GO APPROX. 2.5 MILES TO LEASE ROAD ON LEFT (EAST), GO EAST 0.25 MILE, AT SOUTHEAST PAD CORNER GO NORTH 313', THEN NORTHWEST 85', THEN WEST 75' TO THE NORTHEAST PAD CORNER FOR THIS LOCATION.

**DEVON ENERGY PRODUCTION COMPANY, L.P.  
GREEN WAVE 20-17 FED 1H**

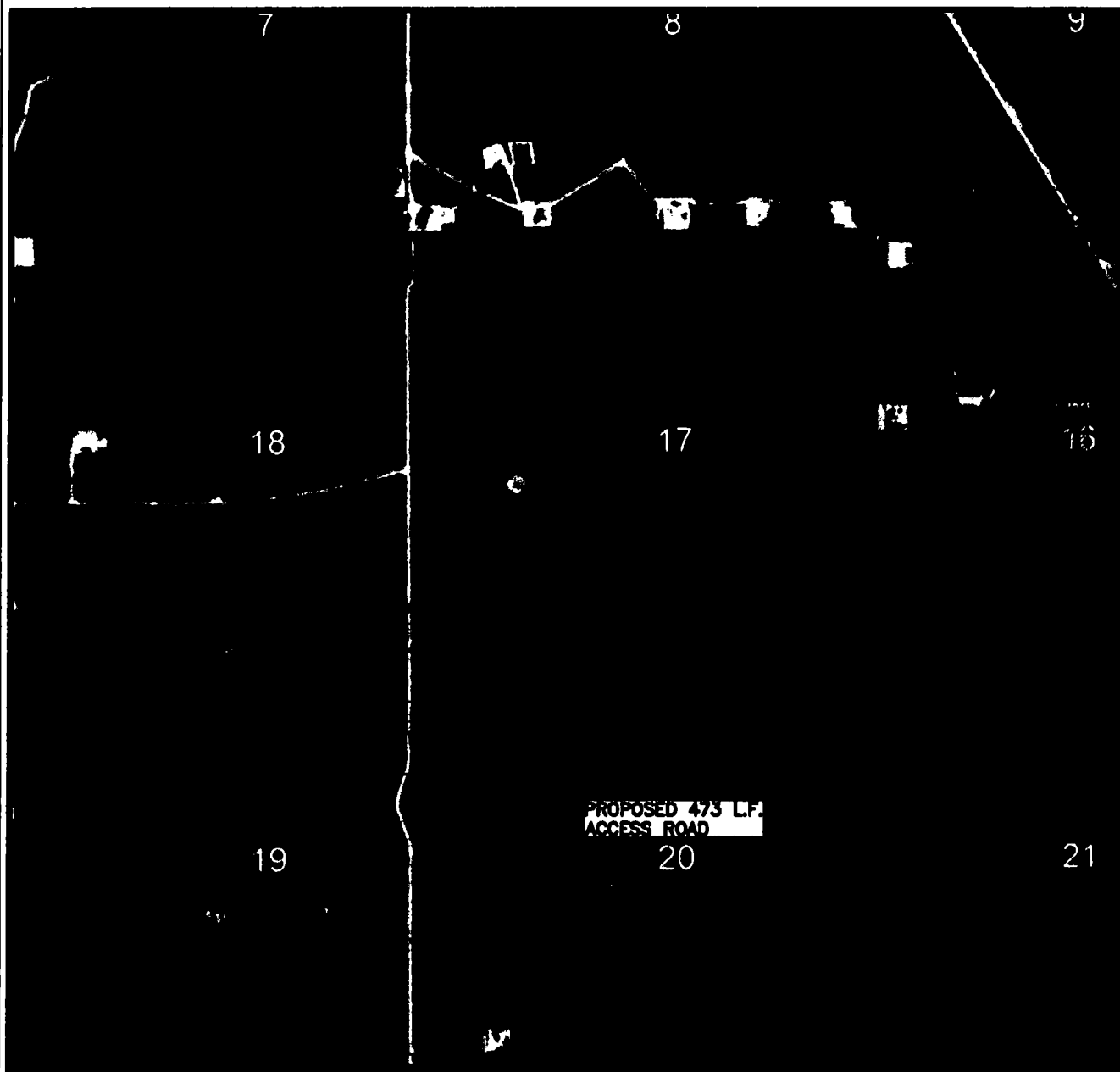
**LOCATED 2394 FT. FROM THE NORTH LINE  
AND 299 FT. FROM THE WEST LINE OF  
SECTION 20, TOWNSHIP 26 SOUTH,  
RANGE 34 EAST, N.M.P.M.  
LEA COUNTY, STATE OF NEW MEXICO**

**JULY 20, 2018**

**MADRON SURVEYING, INC.** 301 SOUTH CANAL (575) 234-3341

**SURVEY NO. 5401A  
CARLSBAD, NEW MEXICO**

SECTION 20, TOWNSHIP 26 SOUTH, RANGE 34 EAST, N.M.P.M.  
LEA COUNTY, STATE OF NEW MEXICO  
AERIAL PHOTO



NOT TO SCALE  
AERIAL PHOTO:  
GOOGLE EARTH  
NOV. 2015

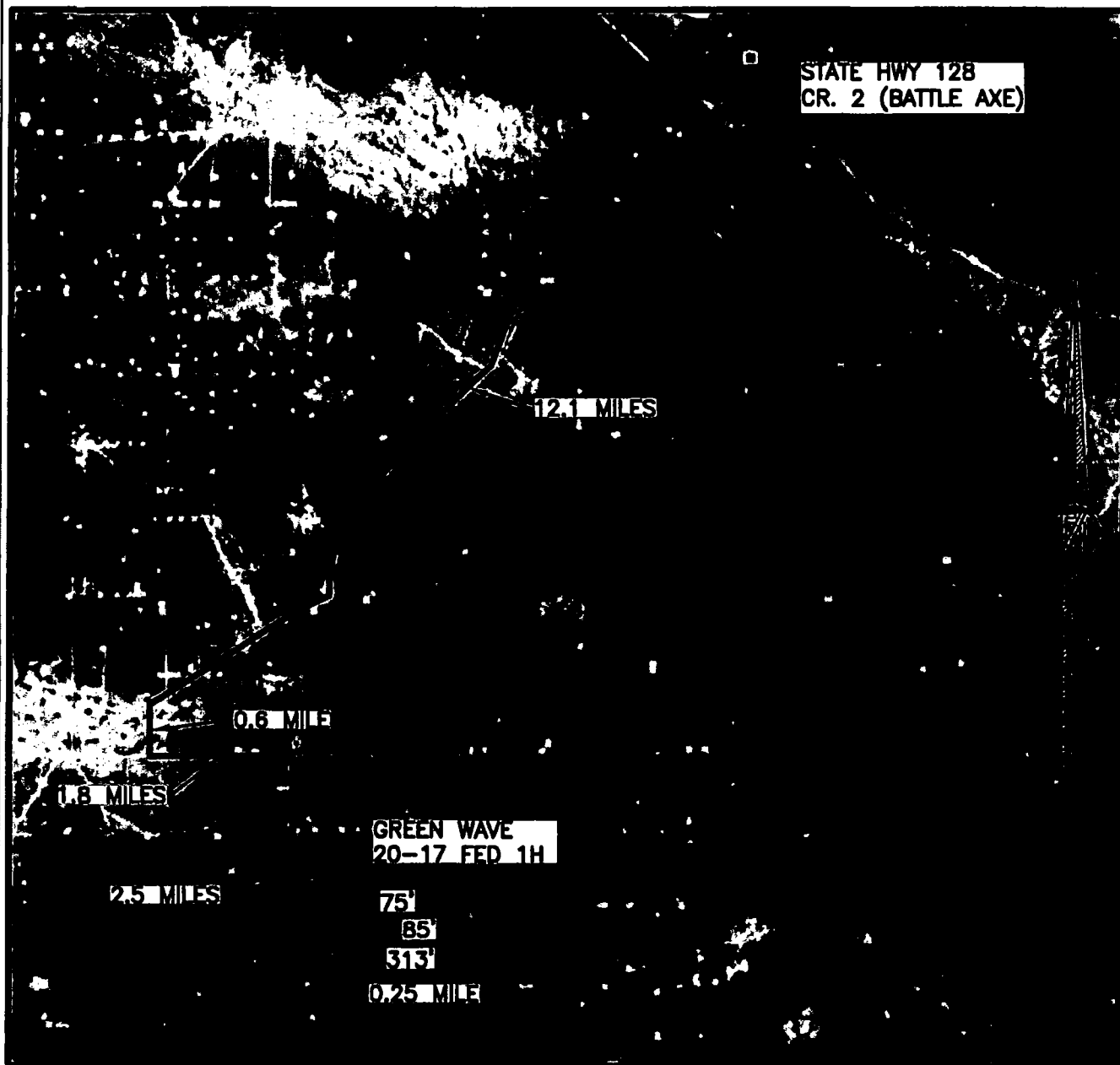
**DEVON ENERGY PRODUCTION COMPANY, L.P.**  
**GREEN WAVE 20-17 FED 1H**  
LOCATED 2394 FT. FROM THE NORTH LINE  
AND 299 FT. FROM THE WEST LINE OF  
SECTION 20, TOWNSHIP 26 SOUTH,  
RANGE 34 EAST, N.M.P.M.  
LEA COUNTY, STATE OF NEW MEXICO

JULY 20, 2018

SURVEY NO. 5401A

MADRON SURVEYING, INC. 301 SOUTH CANAL (575) 234-3341 CARLSBAD, NEW MEXICO

SECTION 20, TOWNSHIP 26 SOUTH, RANGE 34 EAST, N.M.P.M.  
LEA COUNTY, STATE OF NEW MEXICO  
**AERIAL ACCESS ROUTE MAP**



NOT TO SCALE  
AERIAL PHOTO:  
GOOGLE EARTH  
NOV. 2015

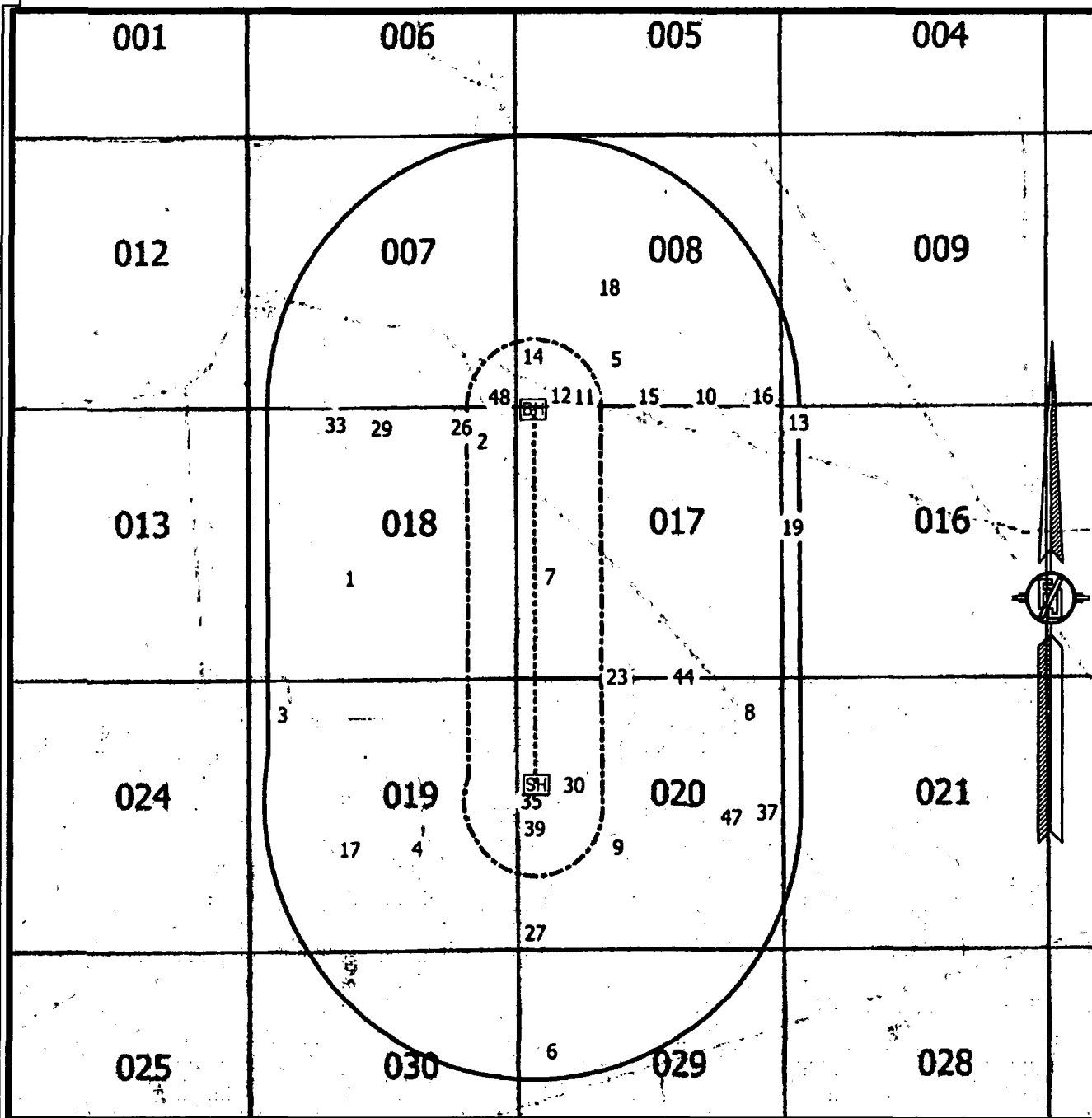
**DEVON ENERGY PRODUCTION COMPANY, L.P.**  
**GREEN WAVE 20-17 FED 1H**  
LOCATED 2394 FT. FROM THE NORTH LINE  
AND 299 FT. FROM THE WEST LINE OF  
SECTION 20, TOWNSHIP 26 SOUTH,  
RANGE 34 EAST, N.M.P.M.  
LEA COUNTY, STATE OF NEW MEXICO

JULY 20, 2018

**MADRON SURVEYING, INC.** 301 SOUTH CANAL (575) 234-3341 **CARLSBAD, NEW MEXICO**

SURVEY NO. 5401A

# 1-MILE WELL MAP



WELL DATA FROM NMOCD GIS - 8/15/18

[SH] SURFACE LOCATION

[BH] BOTTOM OF HOLE

⊗ WELLS WITHIN 1 MILE

----- WELL PATH

----- 1/4 MILE BOUNDARY

----- 1-MILE BOUNDARY

**DEVON ENERGY PRODUCTION COMPANY, L.P.**  
**GREEN WAVE 20-17 FED 1H**

LOCATED 2394 FT. FROM THE NORTH LINE  
AND 299 FT. FROM THE WEST LINE OF  
SECTION 20, TOWNSHIP 26 SOUTH,  
RANGE 34 EAST, N.M.P.M.  
LEA COUNTY, STATE OF NEW MEXICO

JULY 20, 2018

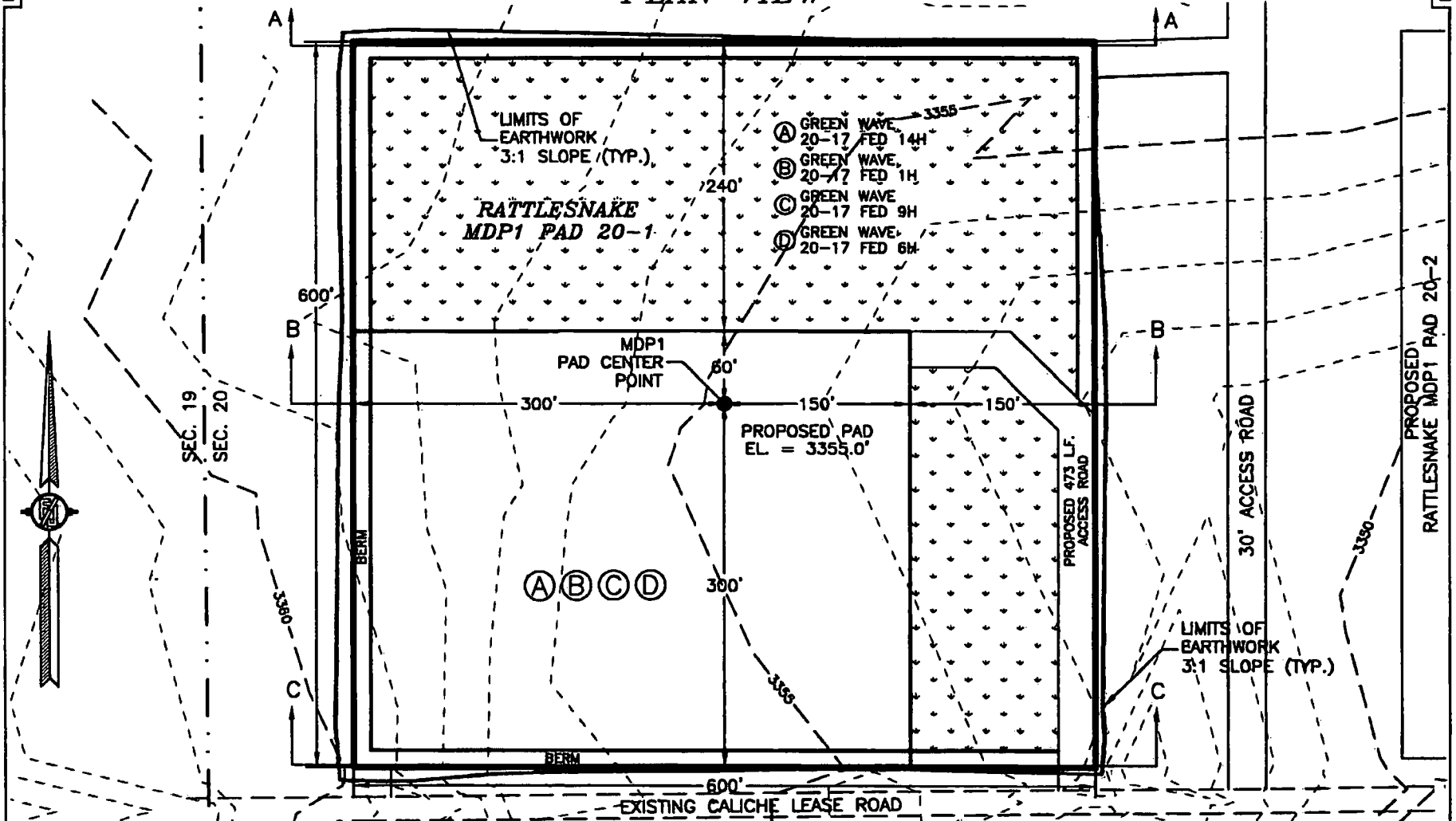
SURVEY NO. 5401A

MADRON SURVEYING, INC. 301 SOUTH CANAL (575) 234-3341

CARLSBAD, NEW MEXICO



# PLAN VIEW



012 60 120 240  
SCALE 1" = 120'

DEVON ENERGY PRODUCTION COMPANY, L.P.  
**PAD GRADING AND CROSS SECTIONS FOR  
GREEN WAVE 20-17 FED 1H**  
SECTION 20, TOWNSHIP 26 SOUTH,  
RANGE 34 EAST, N.M.P.M.  
LEA COUNTY, STATE OF NEW MEXICO

CUT	FILL	NET
14694 CU. YD	6751 CU. YD	7943 CU. YD (FILL)

EARTHWORK QUANTITIES ARE ESTIMATED  
10% SOIL EXPANSION ASSUMED

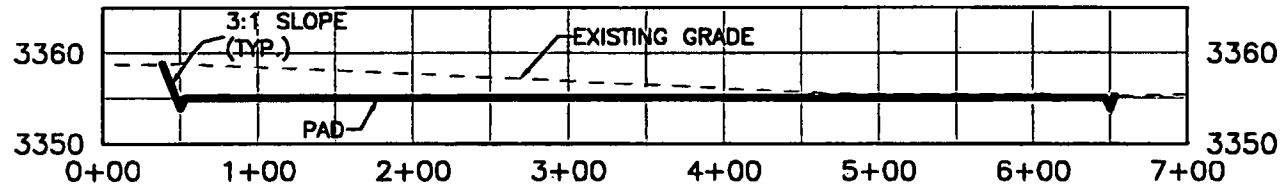
JULY 20, 2018

MADRON SURVEYING, INC. 301 SOUTH CANAL (575) 234-3341 CARLSBAD, NEW MEXICO

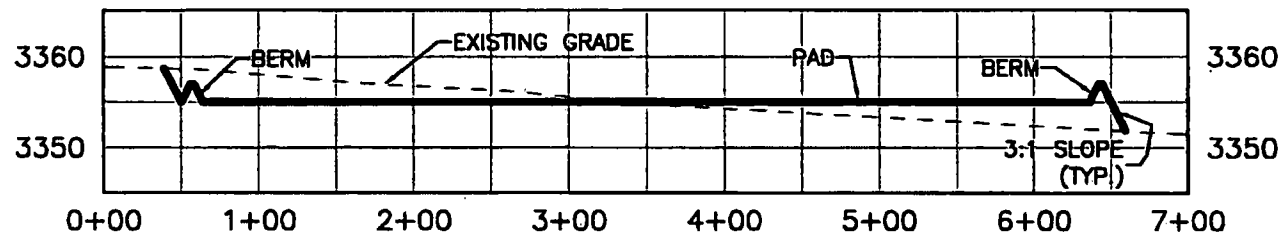
SHEET 1-2  
SURVEY NO. 6401A

# CROSS SECTIONS

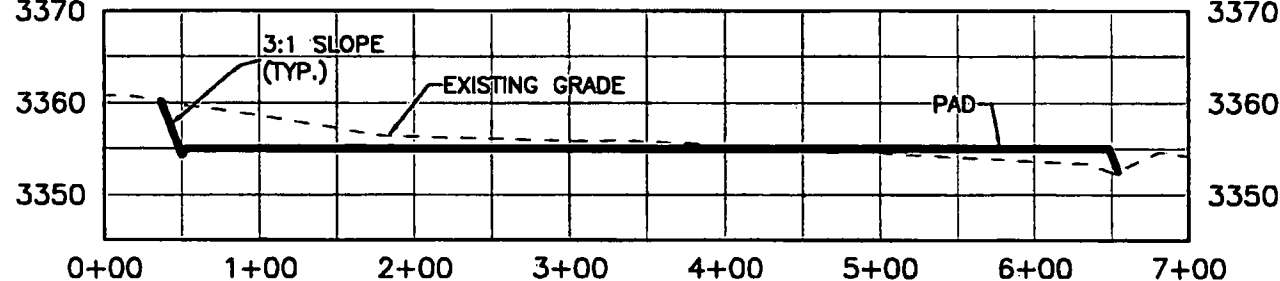
SECTION A-A



SECTION B-B



SECTION C-C



012 60 120 240  
 SCALE 1" = 120' HORZ.  
 SCALE 1" = 20' VER.

DEVON ENERGY PRODUCTION COMPANY, L.P.  
**PAD GRADING AND CROSS SECTIONS FOR**  
**GREEN WAVE 20-17 FED 1H**  
 SECTION 20, TOWNSHIP 26 SOUTH,  
 RANGE 34 EAST, N.M.P.M.  
 LEA COUNTY, STATE OF NEW MEXICO

JULY 20, 2018

CUT	FILL	NET
14694 CU. YD	6751 CU. YD	7943 CU. YD (FILL)

EARTHWORK QUANTITIES ARE ESTIMATED  
 10% SOIL EXPANSION ASSUMED

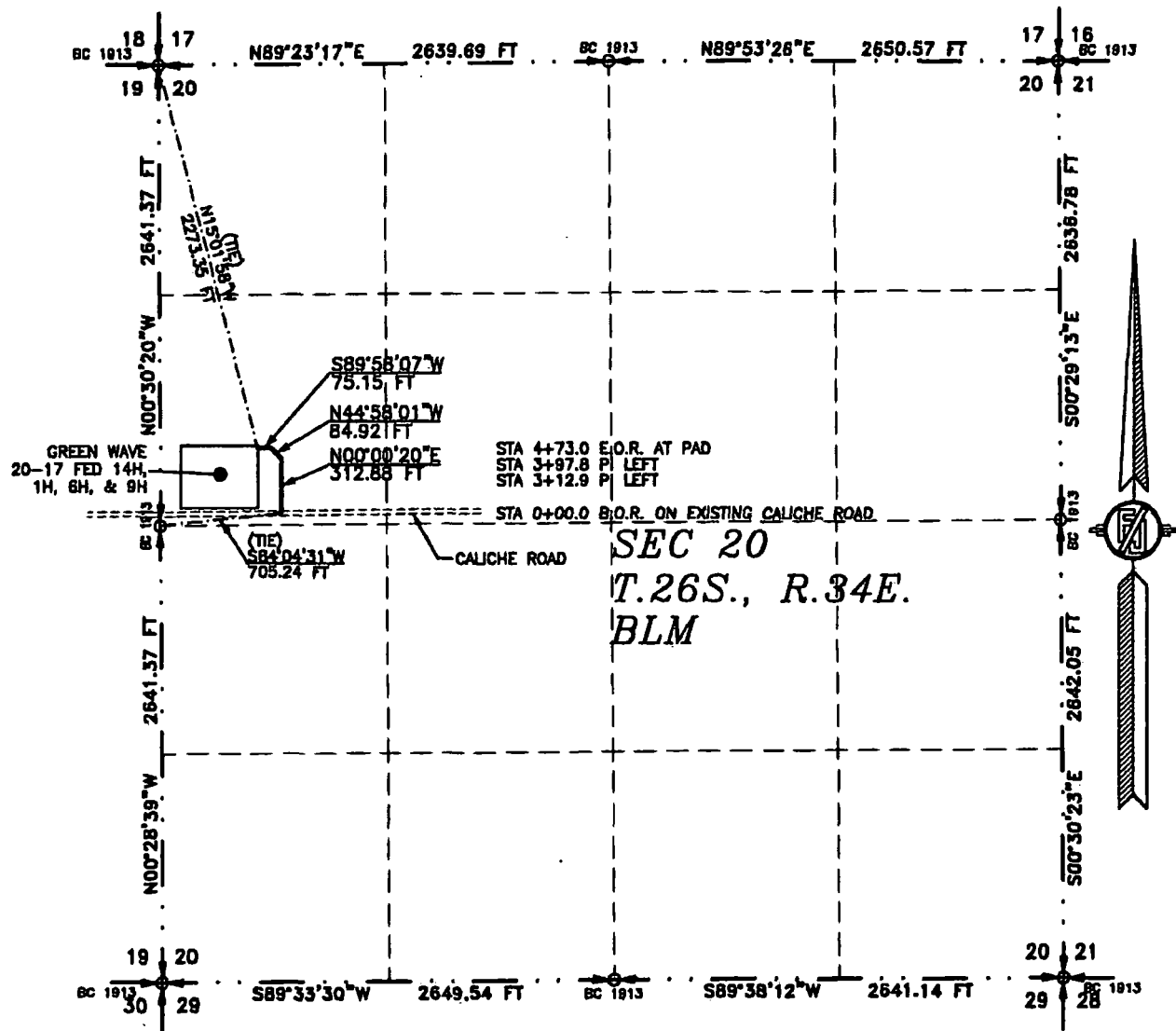
MADRON SURVEYING, INC. 301 SOUTH CANAL (575) 234-3341 CARLSBAD, NEW MEXICO

SHEET 2-2  
 SURVEY NO. 6401A

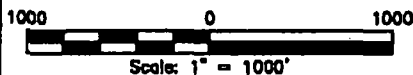
# ACCESS ROAD PLAT

ACCESS ROAD FOR GREEN WAVE 20-17 FED 14H, 1H, 6H, & 9H

DEVON ENERGY PRODUCTION COMPANY, L.P.  
CENTERLINE SURVEY OF AN ACCESS ROAD CROSSING  
SECTION 20, TOWNSHIP 26 SOUTH, RANGE 34 EAST, N.M.P.M.  
LEA COUNTY, STATE OF NEW MEXICO  
JULY 20, 2018



SEE NEXT SHEET (2-2) FOR DESCRIPTION



## GENERAL NOTES

- 1.) THE INTENT OF THIS ROUTE SURVEY IS TO ACQUIRE AN EASEMENT.
- 2.) BASIS OF BEARING AND DISTANCE IS NMSP EAST (NAD83) MODIFIED TO SURFACE COORDINATES. NAD 83 (FEET) AND NAVD 88 (FEET) COORDINATE SYSTEMS USED IN THE SURVEY.

SHEET: 1-2

MADRON SURVEYING, INC. 301 SOUTH CANAL CARLSBAD, NEW MEXICO (575) 234-3341

## SURVEYOR CERTIFICATE

I, FILMON F. JARAMILLO, A NEW MEXICO PROFESSIONAL SURVEYOR NO. 12797, HEREBY CERTIFY THAT I HAVE CONDUCTED AND AM RESPONSIBLE FOR THIS SURVEY, THAT THIS SURVEY IS TRUE AND CORRECT TO THE BEST OF MY KNOWLEDGE AND BELIEF, AND THAT THIS SURVEY AND PLAT MEET THE MINIMUM STANDARDS FOR LAND SURVEYING IN THE STATE OF NEW MEXICO.

IN WITNESS WHEREOF THIS CERTIFICATE IS EXECUTED AT CARLSBAD, NEW MEXICO, THIS 20<sup>TH</sup> DAY OF AUGUST 2018

FILMON F. JARAMILLO, SURVEYOR NO. 12797

MADRON SURVEYING, INC.  
301 SOUTH CANAL  
CARLSBAD, NEW MEXICO 88220  
Phone (575) 234-3341

SURVEY NO. 5401A

## ACCESS ROAD PLAT

ACCESS ROAD FOR GREEN WAVE 20-17 FED 14H, 1H, 6H, & 9H

**DEVON ENERGY PRODUCTION COMPANY, L.P.**  
**CENTERLINE SURVEY OF AN ACCESS ROAD CROSSING**  
**SECTION 20, TOWNSHIP 26 SOUTH, RANGE 34 EAST, N.M.P.M.**  
**LEA COUNTY, STATE OF NEW MEXICO**  
**JULY 20, 2018**

### DESCRIPTION

A STRIP OF LAND 30 FEET WIDE CROSSING BUREAU OF LAND MANAGEMENT LAND IN SECTION 20, TOWNSHIP 26 SOUTH, RANGE 34 EAST, N.M.P.M., LEA COUNTY, STATE OF NEW MEXICO AND BEING 15 FEET EACH SIDE OF THE FOLLOWING DESCRIBED CENTERLINE SURVEY:

BEGINNING AT A POINT WITHIN THE SW/4 NW/4 OF SAID SECTION 20, TOWNSHIP 26 SOUTH, RANGE 34 EAST, N.M.P.M., WHENCE THE WEST QUARTER CORNER OF SAID SECTION 20, TOWNSHIP 26 SOUTH, RANGE 34 EAST, N.M.P.M. BEARS S84°04'31"W, A DISTANCE OF 705.24 FEET;  
THENCE N00°00'20"E A DISTANCE OF 312.88 FEET TO AN ANGLE POINT OF THE LINE HEREIN DESCRIBED;  
THENCE N44°58'01"W A DISTANCE OF 84.92 FEET TO AN ANGLE POINT OF THE LINE HEREIN DESCRIBED;  
THENCE S89°58'07"W A DISTANCE OF 75.15 FEET THE TERMINUS OF THIS CENTERLINE SURVEY, WHENCE THE NORTHWEST CORNER OF SAID SECTION 20, TOWNSHIP 26 SOUTH, RANGE 34 EAST, N.M.P.M. BEARS N15°01'58"W, A DISTANCE OF 2273.35 FEET;

SAID STRIP OF LAND BEING 472.95 FEET OR 28.66 RODS IN LENGTH, CONTAINING 0.326 ACRES MORE OR LESS AND BEING ALLOCATED BY FORTIES AS FOLLOWS:

SW/4 NW/4    472.95 L.F.    28.66 RODS    0.326 ACRES

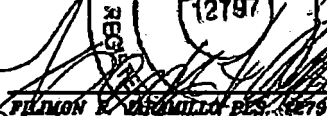
### GENERAL NOTES

- 1.) THE INTENT OF THIS ROUTE SURVEY IS TO ACQUIRE AN EASEMENT.
- 2.) BASIS OF BEARING AND DISTANCE IS NMSP EAST (NAD83) MODIFIED TO SURFACE COORDINATES. NAD 83 (FEET) AND NAVD 88 (FEET) COORDINATE SYSTEMS USED IN THE SURVEY.

### SURVEYOR CERTIFICATE

I, FILMON F. JARAMILLO, A NEW MEXICO PROFESSIONAL SURVEYOR NO. 12787, HEREBY CERTIFY THAT I HAVE CONDUCTED AND AM RESPONSIBLE FOR THIS SURVEY, THAT THIS SURVEY IS TRUE AND CORRECT TO THE BEST OF MY KNOWLEDGE AND BELIEF, AND THAT THIS SURVEY AND PLAT MEET THE MINIMUM STANDARDS FOR LAND SURVEYING IN THE STATE OF NEW MEXICO.

IN WITNESS WHEREOF, THIS CERTIFICATE IS EXECUTED AT CARLSBAD, NEW MEXICO, THIS 22 DAY OF AUGUST 2018

  
FILMON F. JARAMILLO, P.E.S. 12787

MADRON SURVEYING, INC.  
301 SOUTH CANAL  
CARLSBAD, NEW MEXICO 88220  
Phone (575) 234-3341

SHEET: 2-2

MADRON SURVEYING, INC. 301 SOUTH CANAL CARLSBAD, NEW MEXICO  
(575) 234-3341

SURVEY NO. 5401A