

District I
1625 N. French Dr., Hobbs, NM 88240
Phone: (575) 393-6161 Fax: (575) 393-0720
District II
811 S. First St., Artesia, NM 88210
Phone: (575) 748-1283 Fax: (575) 748-9720
District III
1000 Rio Brazos Road, Aztec, NM 87410
Phone: (505) 334-6178 Fax: (505) 334-6170
District IV
1220 S. St. Francis Dr., Santa Fe, NM 87505
Phone: (505) 476-3460 Fax: (505) 476-3462

State of New Mexico
Energy, Minerals & Natural Resources
Department
OIL CONSERVATION DIVISION
1220 South St. Francis Dr.
Santa Fe, NM 87505

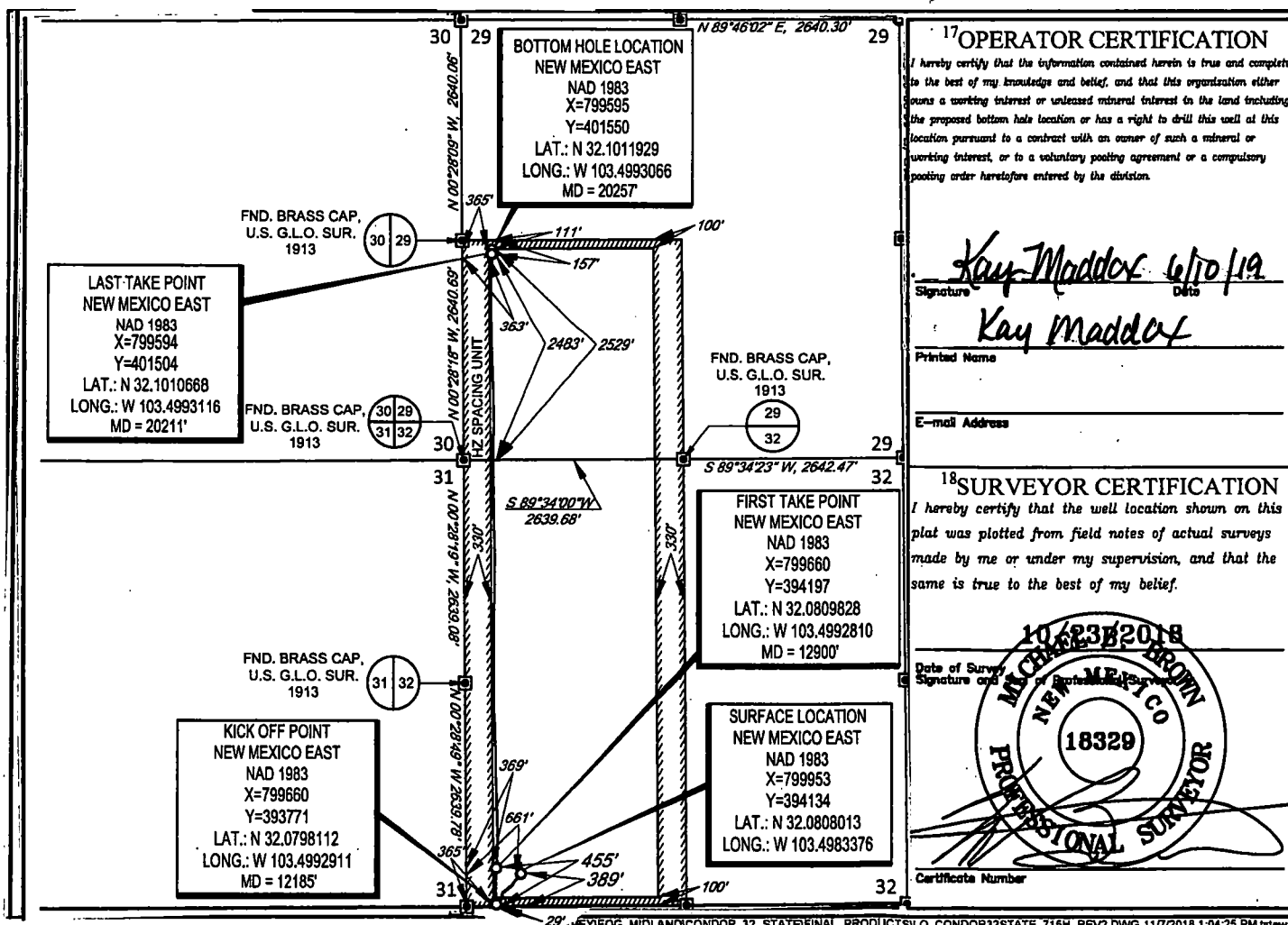
HOBBS OCD
JUN 17 2019
RECEIVED

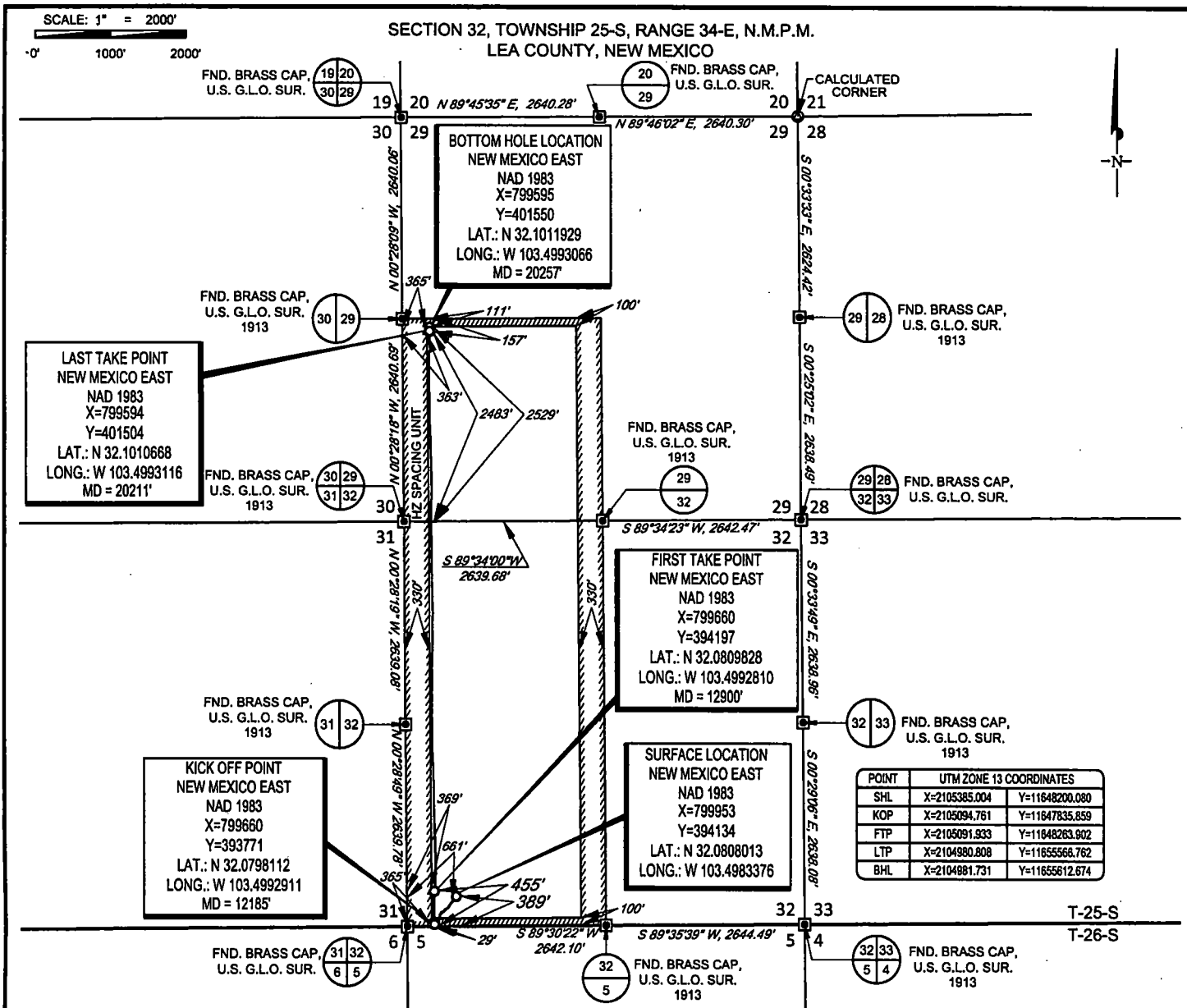
FORM C-102
Revised August 1, 2011
Submit one copy to appropriate
District Office
AMENDED REPORT

WELL LOCATION AND ACREAGE DEDICATION PLAT

¹ API Number 30-025- 45366		² Pool Code 98094		³ Pool Name Bobcat Draw; Upper Wolfcamp	
⁴ Property Code 320995		⁵ Property Name CONDOR 32 STATE COM			⁶ Well Number #715H
⁷ GRID No. 7377		⁸ Operator Name EOG RESOURCES, INC.			⁹ Elevation 3329'
¹⁰ Surface Location					
UL or lot no. M	Section 32	Township 25-S	Range 34-E	Lot Ida -	Feet from the 389'
		North/South line SOUTH		Feet from the 661'	East/West line WEST
				County LEA	
¹¹ Bottom Hole Location If Different From Surface					
UL or lot no. L	Section 29	Township 25-S	Range 34-E	Lot Ida -	Feet from the 2529'
		North/South line SOUTH		Feet from the 365'	East/West line WEST
				County LEA	
¹² Dedicated Acres 480.00		¹³ Joint or Infill		¹⁴ Consolidation Code	
				¹⁵ Order No.	

No allowable will be assigned to this completion until all interests have been consolidated or a non-standard unit has been approved by the division.



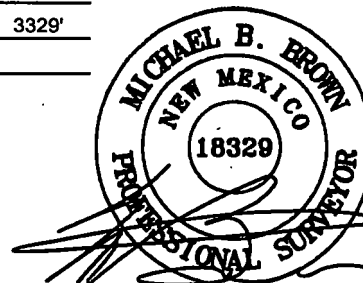


LEASE NAME & WELL NO.: CONDOR 32 STATE COM #715H
 SECTION 32 TWP 25-S RGE 34-E SURVEY N.M.P.M.
 COUNTY LEA STATE NM ELEVATION 3329'
 DESCRIPTION 389' FSL & 661' FWL



TOPOGRAPHIC
LOYALTY INNOVATION LEGACY

1400 EVERMAN PARKWAY, Ste. 146 • FT. WORTH, TEXAS 76140
 TELEPHONE: (817) 744-7512 • FAX (817) 744-7554
 2803 NORTH BIG SPRING • MIDLAND, TEXAS 79705
 TELEPHONE: (432) 682-1853 OR (800) 767-1653 • FAX (432) 682-1743
 WWW.TOPOGRAPHIC.COM



Michael Blake Brown, P.S. No. 18329
 NOVEMBER 27, 2018



CONDOR 32 STATE COM #715H AS-COMPLETED	REVISION:		NOTES: 1. ORIGINAL DOCUMENT SIZE: 8.5" X 11" 2. ALL BEARINGS, DISTANCES, AND COORDINATE VALUES CONTAINED HEREIN ARE GRID BASED UPON THE NEW MEXICO COORDINATE SYSTEM OF 1983, EAST ZONE, U.S. SURVEY FEET. 3. THIS WELL LOCATION SHOWN HEREON HAS BEEN SURVEYED ON THE GROUND UNDER MY SUPERVISION AND PREPARED ACCORDING TO THE EVIDENCE FOUND AT THE TIME OF SURVEY, AND DATA PROVIDED BY EOG RESOURCES, INC. THIS CERTIFICATION IS MADE AND LIMITED TO THOSE PERSONS OR ENTITIES SHOWN ON THE FACE OF THIS PLAT AND IS NON-TRANSFERABLE. THIS SURVEY IS CERTIFIED FOR THIS TRANSACTION ONLY.
DATE: 05/06/19			
FILE:AD_CONDOR32STATE_715H			
DRAWN BY: TRG			
SHEET: 1 OF 1			