

District I
1625 N. French Dr., Hobbs, NM 88240
Phone: (575) 393-6161 Fax: (575) 393-0720
District II
811 S. First St., Artesia, NM 88210
Phone: (575) 748-1283 Fax: (575) 748-9720
District III
1000 Rio Brazos Road, Aztec, NM 87410
Phone: (505) 334-6178 Fax: (505) 334-6170
District IV
1220 S. St. Francis Dr., Santa Fe, NM 87505
Phone: (505) 476-3460 Fax: (505) 476-3462

State of New Mexico
Energy, Minerals & Natural Resources Department
OIL CONSERVATION DIVISION
1220 South St. Francis Dr.
Santa Fe, NM 87505

Form C-102
Revised August 1, 2011
Submit one copy to appropriate
District Office

SEP 18 2018

RECEIVED

AMENDED REPORT

property
code

WELL LOCATION AND ACREAGE DEDICATION PLAT

API Number 30-025-44204		Pool Code 96715	Pool Name WC-025 G-07 S253206M BONE SPRING
Property Code 322445	Property Name MARWARI 21-16 STATE FED COM		Well Number 234H
OGRID No. 6137	Operator Name DEVON ENERGY PRODUCTION COMPANY, L.P.		Elevation 3390.3

Surface Location

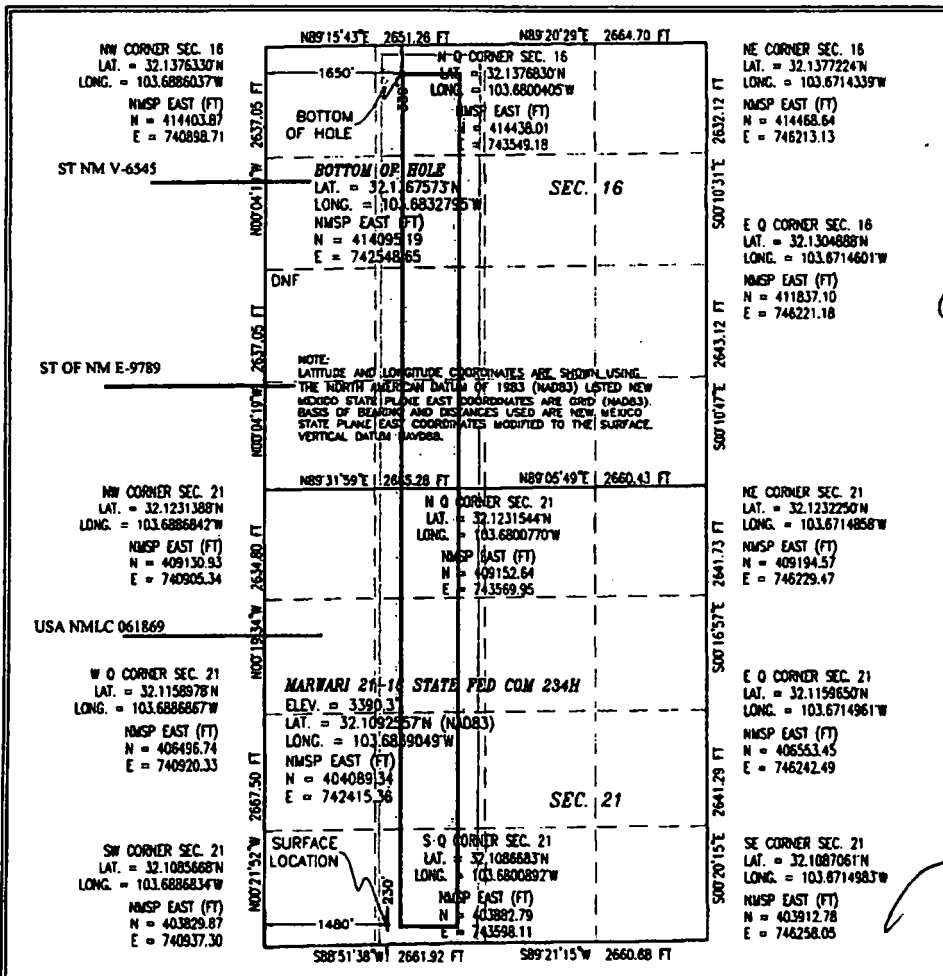
UL or lot no.	Section	Township	Range	Lot Idn	Feet from the	North/South line	Feet from the	East/West line	County
N	21	25 S	32 E		230	SOUTH	1480	WEST	LEA

Bottom Hole Location If Different From Surface

UL or lot no.	Section	Township	Range	Lot Idn	Feet from the	North/South line	Feet from the	East/West line	County
C	16	25 S	32 E		330	NORTH	1650	WEST	LEA

Dedicated Acres 320	Joint or Infill	Consolidation Code	Order No.
-------------------------------	-----------------	--------------------	-----------

No allowable will be assigned to this completion until all interests have been consolidated or a non-standard unit has been approved by the division.



OPERATOR CERTIFICATION

I hereby certify that the information contained herein is true and complete to the best of my knowledge and belief, and that this organization either owns a working interest or unleased mineral interest in the land including the proposed bottom hole location or has a right to drill this well at this location pursuant to a contract with an owner of such a mineral or working interest, or to a voluntary pooling agreement or a compulsory pooling order heretofore entered by the division.

Erin Workman 02/23/2018
Signature Date

Erin Workman

Printed Name

Erin.workman@dvn.com

E-mail Address

SURVEYOR CERTIFICATION

I hereby certify that the well location shown on this plat was plotted from field notes of actual surveys made by me or under my supervision, and that the same is true and correct to the best of my belief.

William F. Jaramillo
JANUARY 23 2018
Date of Survey

William F. Jaramillo
Signature and Seal of Professional Surveyor
Certificate Number: WILLIAM F. JARAMILLO, PLS 12797

SURVEY NO. 5883A