



HOBBS OCD
AUG 05 2019
RECEIVED

EOG Resources - Midland

Lea County, NM (NAD 83 NME)

Osprey 10

#706H

OH

Design: OH

Midland PVA

18 March, 2019



Midland PVA

Company: EOG Resources - Midland	Local Co-ordinate Reference: Well #706H
Project: Lea County, NM (NAD 83 NME)	TVD Reference: KB = 25 @ 3356.0usft (H&P 379)
Site: Osprey 10	MD Reference: KB = 25 @ 3356.0usft (H&P 379)
Well: #706H	North Reference: Grid
Wellbore: OH	Survey Calculation Method: Minimum Curvature
Design: OH	Database: EDM 5000.14

Project Lea County, NM (NAD 83 NME)	
Map System: US State Plane 1983	System Datum: Mean Sea Level
Geo Datum: North American Datum 1983	
Map Zone: New Mexico Eastern Zone	

Site Osprey 10		
Site Position:	Northing: 415,148.00 usft	Latitude: 32° 8' 18.063 N
From: Map	Easting: 809,711.00 usft	Longitude: 103° 27' 58.840 W
Position Uncertainty: 0.0 usft	Slot Radius: 13-3/16 "	Grid Convergence: 0.46 °

Well #706H		
Well Position +N-S 0.0 usft	Northing: 415,292.00 usft	Latitude: 32° 8' 18.172 N
+E-W 0.0 usft	Easting: 813,652.00 usft	Longitude: 103° 27' 12.785 W
Position Uncertainty 0.0 usft	Wellhead Elevation: usft	Ground Level: 3,333.0 usft

Wellbore OH					
Magnetics	Model Name	Sample Date	Declination (°)	Dip Angle (°)	Field Strength (nT)
	IGRF2015	1/23/2019	6.72	59.98	47,735.67184336

Design OH				
Audit Notes:				
Version: 1.0	Phase: ACTUAL	Tie On Depth: 0.0		
Vertical Section:	Depth From (TVD) (usft)	+N-S (usft)	+E-W (usft)	Direction (°)
	0.0	0.0	0.0	1.82

Survey Program	Date 3/18/2019			
From (usft)	To (usft)	Survey (Wellbore)	Tool Name	Description
147.0	20,075.0	Total MWD (OH)	MWD	OWSG MWD - Standard



Midland PVA

Company: EOG Resources - Midland	Local Co-ordinate Reference: Well #706H
Project: Lea County, NM (NAD 83 NME)	TVD Reference: KB = 25 @ 3358.0usft (H&P 379)
Site: Osprey 10	MD Reference: KB = 25 @ 3358.0usft (H&P 379)
Well: #706H	North Reference: Grid
Wellbore: OH	Survey Calculation Method: Minimum Curvature
Design: OH	Database: EDM 5000.14

Survey											
MD (usft)	Inc (")	Azi (azimuth) (")	TVD (usft)	N/S (usft)	EW (usft)	DLeg ("100usft)	Build ("100usft)	Turn ("100usft)	High to Plan (usft)	Right to Plan (usft)	
0.0	0.00	0.00	0.0	0.0	0.0	0.00	0.00	0.00	0.00	0.0	0.0
147.0	0.00	0.00	147.0	0.0	0.0	0.00	0.00	0.00	0.00	0.0	0.0
225.0	2.30	353.60	225.0	1.8	-0.2	2.95	2.95	0.00	-1.6	0.0	
281.0	2.10	0.00	280.9	3.7	-0.3	0.57	-0.36	11.43	-3.7	0.3	
398.0	1.60	22.30	397.9	7.4	0.3	0.74	-0.43	18.06	-6.9	2.5	
589.0	1.10	42.20	588.8	11.2	2.6	0.36	-0.26	10.42	-10.0	5.6	
682.0	1.10	48.40	681.8	12.4	3.8	0.15	0.00	7.74	-11.0	6.9	
775.0	0.30	27.30	774.8	13.2	4.6	0.89	-0.86	-23.76	-13.9	1.9	
953.0	0.40	240.70	952.8	13.3	4.3	0.38	0.06	-82.38	10.3	-9.5	
1,055.0	1.20	237.80	1,054.8	12.6	3.1	0.79	0.78	-2.84	9.3	-9.0	
1,242.0	1.40	221.10	1,241.7	9.8	-0.1	0.23	0.11	-8.93	7.4	-6.5	
1,335.0	1.40	234.10	1,334.7	8.3	-1.7	0.34	0.00	13.98	3.5	-7.7	
1,429.0	1.40	230.30	1,428.7	6.9	-3.8	0.10	0.00	-4.04	1.7	-7.6	
1,523.0	1.00	252.80	1,522.7	5.9	-5.2	0.65	-0.43	23.94	-3.2	-7.2	
1,618.0	0.70	244.90	1,617.7	5.4	-6.5	0.34	-0.32	-8.32	-3.6	-7.7	
1,713.0	0.70	244.40	1,712.6	4.9	-7.6	0.01	0.00	-0.53	-4.7	-7.7	
1,807.0	0.60	230.30	1,806.6	4.4	-8.5	0.20	-0.11	-15.00	-3.7	-8.8	
1,902.0	0.60	221.50	1,901.6	3.7	-9.2	0.10	0.00	-9.26	-3.3	-9.3	
1,996.0	0.90	199.70	1,995.6	2.6	-9.8	0.44	0.32	-23.19	-0.8	-10.1	
2,184.0	0.70	170.20	2,183.6	0.1	-10.1	0.24	-0.11	-15.69	1.8	-9.9	
2,279.0	0.70	156.50	2,278.6	-1.0	-9.7	0.18	0.00	-14.42	3.0	-9.3	
2,373.0	0.70	138.90	2,372.6	-2.0	-9.1	0.23	0.00	-18.72	4.5	-8.2	
2,468.0	0.60	121.20	2,467.6	-2.8	-8.2	0.26	0.11	-18.63	5.6	-6.6	
2,582.0	0.90	102.20	2,581.6	-3.3	-6.9	0.32	0.11	-20.21	6.1	-4.6	
2,657.0	1.30	96.30	2,656.6	-3.5	-5.1	0.44	0.42	-6.21	4.7	-4.1	
2,751.0	1.90	93.30	2,750.5	-3.7	-2.5	0.64	0.64	-3.19	2.3	-3.9	
2,846.0	2.20	91.10	2,845.5	-3.9	0.9	0.33	0.32	-2.32	-1.0	-3.8	



Midland PVA

Company: EOG Resources - Midland	Local Co-ordinate Reference: Well #706H
Project: Lea County, NM (NAD 83 NME)	TVD Reference: KB = 25 @ 3358.0usft (H&P 379)
Site: Osprey 10	MD Reference: KB = 25 @ 3358.0usft (H&P 379)
Well: #706H	North Reference: Grid
Wellbore: OH	Survey Calculation Method: Minimum Curvature
Design: OH	Database: EDM 5000.14

Survey												
MD (usft)	Inc (°)	Azi (azimuth) (°)	TVD (usft)	N/S (usft)	E/W (usft)	D/Lag (°/100usft)	Build (°/100usft)	Turn (°/100usft)	High to Plan (usft)	Right to Plan (usft)		
2,940.0	2.80	88.50	2,939.4	-3.8	4.8	0.44	0.43	-2.77	-4.7	-4.0		
3,035.0	3.00	88.90	3,034.3	-3.7	9.5	0.42	0.42	0.42	-9.3	-3.8		
3,130.0	4.50	93.20	3,129.1	-3.9	15.7	1.61	1.58	4.53	-13.6	-1.2		
3,224.0	7.20	108.10	3,222.6	-5.9	25.0	3.27	2.87	15.85	-17.6	5.7		
3,319.0	8.10	112.90	3,316.7	-10.4	38.8	1.16	0.95	5.05	-21.3	10.7		
3,414.0	8.90	107.80	3,410.7	-16.2	50.0	1.16	0.84	-5.37	-27.2	12.3		
3,509.0	8.50	121.00	3,504.8	-21.1	63.0	2.14	-0.42	13.89	-28.2	21.8		
3,604.0	6.50	126.10	3,598.8	-27.9	73.3	2.22	-2.11	5.37	-28.7	26.0		
3,698.0	5.90	127.90	3,692.2	-34.0	81.5	0.67	-0.64	1.91	-28.2	27.8		
3,793.0	6.50	128.60	3,786.7	-40.2	89.6	0.65	0.63	-1.37	-29.2	28.1		
3,887.0	5.50	144.20	3,880.2	-47.0	98.5	2.21	-1.08	18.72	-19.4	35.2		
3,981.0	6.10	140.50	3,973.7	-54.5	102.3	0.75	0.84	-3.94	-21.4	32.2		
4,076.0	5.90	139.50	4,068.2	-62.1	108.7	0.24	-0.21	-1.05	-22.0	30.5		
4,170.0	5.80	133.90	4,161.7	-69.1	115.3	0.62	-0.11	-5.96	-24.6	27.5		
4,265.0	5.60	131.80	4,256.2	-75.5	122.2	0.30	-0.21	-2.21	-25.1	26.6		
4,360.0	5.40	124.30	4,350.8	-81.1	129.3	0.78	-0.21	-7.89	-27.6	23.9		
4,455.0	6.20	140.80	4,445.3	-87.6	138.3	1.94	0.84	17.37	-19.3	30.5		
4,549.0	7.40	130.50	4,538.6	-95.5	144.1	1.82	1.28	-10.96	-25.7	26.1		
4,645.0	8.80	119.00	4,633.7	-103.1	155.2	2.22	1.46	-11.98	-34.0	21.6		
4,740.0	10.10	121.50	4,727.4	-110.9	168.7	1.43	1.37	2.63	-38.9	25.3		
4,835.0	8.40	138.50	4,821.2	-120.5	180.4	3.37	-1.79	17.89	-35.0	38.9		
4,929.0	8.90	131.00	4,914.1	-130.4	190.4	1.31	0.53	-7.98	-43.8	31.4		
5,023.0	10.40	127.30	5,006.8	-140.3	202.7	1.73	1.60	-3.94	-51.7	29.0		
5,118.0	9.20	142.00	5,100.4	-151.5	214.2	2.91	-1.28	15.47	-48.9	41.6		
5,212.0	7.70	141.40	5,193.4	-162.3	222.7	1.60	-1.60	-0.64	-53.5	39.4		
5,307.0	6.30	140.70	5,287.7	-171.4	230.0	1.48	-1.47	-0.74	-55.8	37.3		
5,401.0	5.20	141.70	5,381.2	-178.7	235.9	1.18	-1.17	1.06	-54.8	36.8		



Midland PVA

Company: EOG Resources - Midland	Local Co-ordinate Reference: Well #706H
Project: Lea County, NM (NAD 83 NME)	TVD Reference: KB = 25 @ 3358.0usft (H&P 379)
Site: Osprey 10	MD Reference: KB = 25 @ 3358.0usft (H&P 379)
Well: #706H	North Reference: Grid
Wellbore: OH	Survey Calculation Method: Minimum Curvature
Design: OH	Database: EDM 5000.14

MD (usft)	Inc (")	Azi (azimuth) (")	TVD (usft)	N/S (usft)	E/W (usft)	DLag (*100usft)	Build (*100usft)	Turn (*100usft)	High to Plan (usft)	Right to Plan (usft)
5,498.0	4.10	138.40	5,475.9	-184.6	240.8	1.19	-1.16	-3.47	-54.6	32.3
5,590.0	4.10	138.40	5,569.6	-189.6	245.4	0.15	0.00	-2.13	-52.6	29.6
5,685.0	4.10	134.80	5,664.4	-194.4	250.1	0.11	0.00	-1.58	-50.3	27.7
5,779.0	4.00	134.50	5,758.2	-199.1	254.8	0.11	-0.11	-0.43	-47.3	27.0
5,874.0	3.80	135.60	5,852.9	-203.6	259.4	0.22	-0.21	1.16	-43.3	27.4
5,966.0	3.30	134.50	5,946.7	-207.8	263.5	0.54	-0.53	-1.17	-39.6	26.2
6,062.0	3.40	129.60	6,040.6	-211.4	267.6	0.32	0.11	-5.21	-37.5	23.0
6,157.0	3.40	127.20	6,135.4	-214.9	272.0	0.15	0.00	-2.53	-34.2	22.2
6,251.0	3.30	126.50	6,228.3	-218.2	276.4	0.11	-0.11	-0.74	-30.2	22.8
6,346.0	4.60	151.80	6,324.0	-223.2	280.4	2.28	1.37	26.63	-14.5	31.3
6,440.0	4.80	163.20	6,417.7	-230.3	283.3	1.01	0.21	12.13	-7.3	29.3
6,534.0	4.80	159.90	6,511.4	-237.6	285.7	0.36	-0.21	-3.51	-7.9	24.1
6,628.0	4.50	158.70	6,605.1	-244.6	288.4	0.15	-0.11	-1.28	-7.0	19.5
6,722.0	4.30	156.80	6,698.8	-251.3	291.1	0.26	-0.21	-2.02	-5.9	15.1
6,817.0	4.10	154.20	6,793.6	-257.6	294.0	0.29	-0.21	-2.74	-4.3	11.0
6,911.0	4.00	149.40	6,887.3	-263.4	297.1	0.38	-0.11	-5.11	-2.7	7.5
7,005.0	4.00	147.40	6,981.1	-269.0	300.5	0.15	0.00	-2.13	-2.7	5.5
7,100.0	4.00	147.70	7,075.9	-274.6	304.1	0.02	0.00	0.32	-5.5	4.5
7,194.0	3.60	149.20	7,169.7	-279.9	307.4	0.44	-0.43	1.60	-10.7	4.5
7,289.0	3.40	148.50	7,264.5	-284.9	310.4	0.22	-0.21	-0.74	-16.6	4.3
7,383.0	3.30	149.30	7,358.3	-289.6	313.2	0.12	-0.11	0.85	-22.0	4.6
7,478.0	3.00	149.80	7,453.2	-294.1	315.9	0.32	-0.32	0.53	-27.2	4.8
7,572.0	0.70	148.20	7,547.1	-298.7	317.4	2.45	-2.45	-1.70	-30.4	4.0
7,666.0	0.70	145.00	7,641.1	-297.7	318.0	0.04	0.00	-3.40	-31.7	2.3
7,760.0	0.60	132.50	7,735.1	-298.6	318.8	0.20	0.11	-13.30	-32.6	-4.8
7,855.0	0.60	130.60	7,830.1	-299.3	319.7	0.21	-0.21	-2.00	-33.6	-5.9
7,949.0	0.30	128.70	7,924.1	-299.8	320.3	0.32	-0.32	-4.15	-33.9	-8.2



Midland PVA

Company: EOG Resources - Midland	Local Co-ordinate Reference: Well #706H
Project: Lea County, NM (NAD 83 NME)	TVD Reference: KB = 25 @ 3358.0usft (H&P 379)
Site: Osprey 10	MD Reference: KB = 25 @ 3358.0usft (H&P 379)
Well: #706H	North Reference: Grid
Wellbore: OH	Survey Calculation Method: Minimum Curvature
Design: OH	Database: EDM 5000.14

Survey												
MD (usft)	Inc (°)	Asd (azimuth) (°)	TVD (usft)	N/S (usft)	E/W (usft)	DLeg (°/100usft)	Build (°/100usft)	Turn (°/100usft)	High to Plan (usft)	Right to Plan (usft)		
8,043.0	0.30	206.30	8,018.1	-300.2	320.4	0.41	0.00	84.88	-14.5	32.1		
8,138.0	0.30	217.40	8,113.1	-300.6	320.1	0.06	0.00	11.68	-8.5	34.3		
8,232.0	0.60	211.10	8,207.1	-301.2	319.7	0.32	0.32	-6.70	-13.0	33.2		
8,326.0	0.60	297.40	8,301.1	-301.3	318.9	1.03	0.21	91.81	31.6	15.6		
8,421.0	1.10	307.50	8,396.1	-300.5	317.5	0.36	0.32	10.63	32.2	9.9		
8,515.0	1.00	293.00	8,490.1	-299.6	316.1	0.30	-0.11	-15.43	27.0	17.4		
8,610.0	0.60	259.10	8,585.1	-299.4	314.8	0.64	-0.42	-35.68	11.5	29.1		
8,705.0	0.60	232.00	8,680.1	-299.8	313.9	0.30	0.00	-28.53	-3.9	30.9		
8,799.0	1.10	284.20	8,774.1	-299.9	312.7	0.93	0.53	55.53	20.8	22.4		
8,893.0	1.10	287.50	8,868.0	-299.4	310.9	0.07	0.00	3.51	20.3	21.3		
8,987.0	1.10	286.50	8,962.0	-298.8	309.2	0.02	0.00	-1.06	18.1	21.6		
9,081.0	1.10	284.70	9,056.0	-298.4	307.5	0.04	0.00	-1.91	15.6	22.1		
9,175.0	0.70	281.20	9,150.0	-298.0	306.0	0.43	-0.43	-3.72	12.8	23.0		
9,269.0	0.70	278.10	9,244.0	-297.8	304.9	0.04	0.00	-3.30	10.3	23.6		
9,363.0	0.40	268.30	9,338.0	-297.8	304.0	0.33	-0.32	-10.43	5.3	24.9		
9,458.0	0.30	191.80	9,433.0	-298.0	303.6	0.46	-0.11	-80.42	-23.3	10.7		
9,553.0	0.30	157.50	9,528.0	-298.5	303.7	0.19	0.00	-38.21	-25.7	-4.5		
9,647.0	0.30	137.60	9,622.0	-298.9	303.9	0.11	0.00	-21.17	-23.1	-13.1		
9,742.0	1.10	145.80	9,717.0	-299.8	304.8	0.85	0.84	8.63	-25.9	-9.6		
9,837.0	1.20	142.10	9,812.0	-301.4	305.7	0.13	0.11	-3.89	-27.1	-11.3		
9,931.0	1.50	98.40	9,905.9	-302.3	307.6	1.11	0.32	-48.49	-13.7	-27.6		
10,027.0	1.90	59.80	10,001.9	-301.7	310.2	1.23	0.42	-40.21	3.9	-30.9		
10,121.0	1.80	53.40	10,095.8	-300.0	312.7	0.24	-0.11	-6.81	4.3	-30.5		
10,215.0	1.50	52.50	10,189.8	-299.4	314.9	0.32	-0.32	-0.96	2.1	-30.4		
10,310.0	1.10	63.40	10,284.8	-297.2	316.7	0.49	-0.42	11.47	-5.8	-30.0		
10,404.0	0.80	68.50	10,378.8	-296.6	318.1	0.33	-0.32	5.43	-10.0	-29.3		
10,499.0	0.50	41.60	10,473.8	-296.0	319.0	0.44	-0.32	-28.32	3.3	-31.0		



Midland PVA

Company: EOG Resources - Midland	Local Co-ordinate Reference: Well #706H
Project: Lea County, NM (NAD 83 NME)	TVD Reference: KB = 25 @ 3358.0usft (H&P 379)
Site: Osprey 10	MD Reference: KB = 25 @ 3358.0usft (H&P 379)
Well: #706H	North Reference: Grid
Wellbore: OH	Survey Calculation Method: Minimum Curvature
Design: OH	Database: EDM 5000.14

MD (usft)	Inc (")	Ad (azimuth) (")	TVD (usft)	N/S (usft)	E/W (usft)	DLeg ("/100usft)	Build ("/100usft)	Turn ("/100usft)	High to Plan (usft)	Right to Plan (usft)
10,593.0	0.40	26.20	10,567.8	-295.4	319.4	0.17	-0.11	-16.38	10.7	-29.1
10,667.0	0.50	13.30	10,661.8	-294.8	319.6	0.15	0.11	-13.72	16.2	-26.1
10,782.0	0.30	48.60	10,756.7	-294.2	319.9	0.32	-0.21	37.16	-2.4	-30.4
10,876.0	0.30	6.30	10,850.7	-293.8	320.1	0.23	0.00	-45.00	18.2	-24.3
10,970.0	0.80	333.30	10,944.7	-293.1	319.9	0.41	0.32	-35.11	27.8	-10.6
11,065.0	1.10	342.30	11,039.7	-291.8	319.4	0.54	0.53	9.47	24.4	-14.7
11,160.0	1.10	333.30	11,134.7	-290.1	318.8	0.18	0.00	-9.47	24.6	-10.9
11,254.0	0.80	312.70	11,228.7	-288.8	317.9	0.48	-0.32	-21.91	25.3	-1.8
11,348.0	1.00	314.00	11,322.7	-287.8	318.8	0.21	0.21	1.38	23.8	-2.4
11,442.0	1.10	325.20	11,416.7	-288.5	315.7	0.24	0.11	11.91	21.2	-6.8
11,537.0	1.90	321.80	11,511.6	-284.5	314.2	0.85	0.84	-3.47	19.1	-5.6
11,632.0	2.30	330.90	11,606.6	-281.6	312.3	0.54	0.42	9.47	14.5	-8.3
11,726.0	2.60	311.90	11,700.5	-278.6	309.8	0.92	0.32	-20.21	12.5	-3.7
11,820.0	1.80	298.90	11,794.4	-276.4	308.9	1.00	-0.85	-13.83	9.5	-1.3
11,894.0	1.60	292.00	11,868.4	-275.5	304.9	0.39	-0.27	-9.32	7.4	-0.3
12,033.0	1.90	286.70	12,007.3	-274.1	300.9	0.25	0.22	-3.81	3.1	0.2
12,127.0	12.80	357.00	12,100.5	-263.2	288.9	13.07	11.60	74.79	-5.0	-1.2
12,222.0	26.70	359.30	12,189.7	-231.2	288.1	14.65	14.63	2.42	-14.8	-0.5
12,317.0	33.00	2.70	12,272.0	-164.0	289.0	6.66	6.63	3.58	-21.8	-0.7
12,411.0	43.60	0.70	12,345.7	-125.8	300.8	11.35	11.28	-2.13	-23.2	-3.4
12,506.0	52.10	354.40	12,406.4	-55.6	287.4	10.20	8.95	-6.63	-20.5	-2.1
12,600.0	60.90	357.80	12,461.3	22.5	282.2	9.83	9.38	3.62	-12.9	3.4
12,694.0	75.80	1.90	12,495.9	109.6	282.1	16.36	15.85	4.36	-5.7	3.0
12,789.0	87.80	2.00	12,509.4	203.4	285.3	12.63	12.63	0.11	-1.9	-1.0
12,884.0	90.00	1.90	12,511.2	298.4	288.5	2.32	2.32	-0.11	0.8	-4.9
12,979.0	87.20	357.70	12,513.5	393.3	288.2	5.31	-2.95	-4.42	3.9	-5.4
13,073.0	87.20	357.80	12,518.1	487.1	284.5	0.11	0.00	0.11	9.3	-2.4



Midland PVA

Company:	EOG Resources - Midland	Local Co-ordinate Reference:	Well #706H
Project:	Lea County, NM (NAD 83 NME)	TVD Reference:	KB = 25 @ 3356.0usft (H&P 378)
Site:	Osprey 10	MD Reference:	KB = 25 @ 3356.0usft (H&P 379)
Well:	#706H	North Reference:	Grid
Wellbore:	OH	Survey Calculation Method:	Minimum Curvature
Design:	OH	Database:	EDM 5000.14

MD (usft)	Inc (")	Ad (azimuth) (")	TVD (usft)	N/S (usft)	EW (usft)	DLeg ("/100usft)	Build ("/100usft)	Turn ("/100usft)	High to Plan (usft)	Right to Plan (usft)
13,168.0	88.90	357.70	12,521.4	582.0	290.8	1.79	1.79	-0.11	13.4	0.8
13,263.0	90.00	357.50	12,522.3	676.9	286.8	1.18	1.16	-0.21	15.1	3.8
13,358.0	90.20	356.70	12,522.1	771.8	282.0	0.87	0.21	-0.84	15.8	7.9
13,452.0	91.50	356.50	12,520.7	865.6	276.4	1.40	1.38	-0.21	15.3	12.7
13,547.0	92.20	357.40	12,517.7	960.4	271.4	1.20	0.74	0.95	13.0	17.1
13,641.0	90.50	359.80	12,515.4	1,054.3	269.1	3.13	-1.81	2.55	11.6	18.7
13,736.0	91.00	359.80	12,514.2	1,149.3	268.7	0.53	0.53	0.00	11.2	18.3
13,830.0	90.20	0.70	12,513.2	1,243.3	269.2	1.28	-0.85	0.96	11.0	17.1
13,925.0	89.30	0.50	12,513.6	1,338.3	270.2	0.97	-0.95	-0.21	12.3	15.4
14,019.0	90.20	0.10	12,514.0	1,432.3	270.6	1.05	0.96	-0.43	13.5	14.2
14,114.0	91.80	0.90	12,512.4	1,527.3	271.5	1.88	1.68	0.84	12.6	12.6
14,208.0	89.40	1.00	12,511.4	1,621.3	273.0	2.56	-2.55	0.11	11.9	10.3
14,303.0	90.30	1.90	12,511.6	1,716.2	275.4	1.34	0.95	0.95	12.6	7.2
14,398.0	88.80	0.10	12,512.4	1,811.2	277.1	2.47	-1.58	-1.89	13.7	4.8
14,492.0	88.10	358.40	12,514.9	1,905.2	275.9	1.98	-0.74	-1.81	16.6	5.3
14,587.0	88.90	357.80	12,517.4	2,000.1	272.7	1.05	0.84	-0.63	19.5	7.7
14,681.0	87.40	355.60	12,520.5	2,093.9	267.3	2.83	-1.60	-2.34	22.9	12.4
14,776.0	88.30	356.10	12,524.0	2,188.5	260.4	1.08	0.95	0.53	26.8	18.5
14,871.0	88.80	359.00	12,526.4	2,283.4	256.4	3.10	0.53	3.05	29.6	21.9
15,060.0	94.70	0.80	12,520.7	2,472.2	256.0	3.26	3.12	0.85	24.5	20.8
15,155.0	90.30	359.80	12,516.5	2,567.1	256.6	4.73	-4.63	-0.95	20.8	19.4
15,249.0	89.40	359.30	12,516.8	2,661.1	256.0	1.15	-0.96	-0.84	21.4	19.3
15,344.0	92.20	358.90	12,515.4	2,756.1	254.5	2.98	2.85	-0.42	20.5	20.1
15,438.0	89.20	0.10	12,514.3	2,850.1	253.7	3.44	-3.19	1.26	19.7	20.2
15,533.0	90.50	359.10	12,514.5	2,945.1	253.0	1.73	1.37	-1.05	20.4	20.1
15,628.0	92.00	358.60	12,512.5	3,040.0	251.1	1.66	1.58	-0.53	18.7	21.3
15,722.0	92.40	358.80	12,508.9	3,133.9	249.0	0.48	0.43	0.21	15.4	22.7



Midland PVA

Company: EOG Resources - Midland	Local Co-ordinate Reference: Well #706H
Project: Lea County, NM (NAD 83 NME)	TVD Reference: KB = 25 @ 3358.0usft (H&P 379)
Site: Osprey 10	MD Reference: KB = 25 @ 3358.0usft (H&P 379)
Well: #706H	North Reference: Grid
Wellbore: OH	Survey Calculation Method: Minimum Curvature
Design: OH	Database: EDM 5000.14

MD (usft)	Inc (°)	Ad (azimuth) (°)	TVD (usft)	N/S (usft)	E/W (usft)	DLeg (°/100usft)	Build (°/100usft)	Turn (°/100usft)	High to Plan (usft)	Right to Plan (usft)
15,817.0	88.70	359.30	12,507.9	3,228.9	247.4	3.93	-3.89	0.53	14.9	23.5
15,911.0	90.10	359.60	12,508.9	3,322.9	246.5	1.52	1.49	0.32	16.2	23.7
16,005.0	93.10	0.80	12,508.3	3,416.8	246.9	3.48	3.19	1.38	14.0	22.6
16,099.0	90.30	1.10	12,503.5	3,510.8	248.5	2.99	-2.98	0.21	11.5	20.2
16,193.0	90.80	1.60	12,502.6	3,604.7	250.7	0.75	0.53	0.53	10.6	17.3
16,286.0	90.40	0.80	12,501.6	3,697.7	252.7	0.96	-0.43	-0.86	8.7	14.6
16,381.0	89.00	0.80	12,502.1	3,792.7	254.0	1.47	-1.47	0.00	10.2	12.5
16,476.0	88.90	1.60	12,503.9	3,887.7	256.0	0.85	-0.11	0.84	11.9	9.8
16,570.0	88.60	1.90	12,505.9	3,981.6	258.9	0.45	-0.32	0.32	13.9	6.2
16,664.0	89.90	1.80	12,507.2	4,075.5	261.9	1.39	1.38	-0.11	15.2	2.5
16,759.0	91.40	2.70	12,506.1	4,170.4	265.6	1.84	1.58	0.95	14.1	-2.0
16,853.0	90.20	2.20	12,504.8	4,264.3	269.7	1.38	-1.28	-0.53	12.8	-8.7
16,948.0	89.20	2.30	12,505.3	4,359.3	273.4	1.06	-1.05	0.11	13.3	-11.2
17,042.0	89.50	2.80	12,506.3	4,453.2	277.6	0.62	0.32	0.53	14.3	-16.1
17,136.0	89.50	2.90	12,507.1	4,547.1	282.2	0.11	0.00	0.11	15.2	-21.5
17,230.0	89.80	1.10	12,507.7	4,641.0	285.5	1.94	0.32	-1.91	15.7	-25.5
17,323.0	89.40	1.00	12,508.4	4,734.0	287.2	0.44	-0.43	-0.11	16.4	-27.9
17,417.0	88.40	359.80	12,510.2	4,828.0	287.9	1.66	-1.06	-1.28	16.2	-29.3
17,511.0	90.00	0.00	12,511.5	4,921.9	287.7	1.72	1.70	0.21	19.5	-29.9
17,606.0	91.70	0.40	12,510.1	5,016.9	288.1	1.84	1.79	0.42	18.1	-31.0
17,700.0	90.70	359.80	12,508.1	5,110.9	288.2	1.24	-1.06	-0.64	16.1	-31.8
17,794.0	91.00	357.30	12,506.7	5,204.9	285.8	2.68	0.32	-2.66	14.7	-30.2
17,888.0	90.40	357.50	12,505.6	5,298.7	281.6	0.67	-0.64	0.21	13.6	-26.7
17,982.0	90.20	357.00	12,505.1	5,392.6	277.1	0.57	-0.21	-0.53	13.1	-22.9
18,076.0	90.00	356.60	12,504.9	5,486.5	271.8	0.48	-0.21	-0.43	12.9	-18.3
18,170.0	91.20	356.80	12,503.9	5,580.3	266.4	1.29	1.28	0.21	12.8	-13.7
18,265.0	91.60	357.90	12,501.6	5,675.2	262.0	1.23	0.42	1.16	11.6	-10.0



Midland PVA

Company:	EOG Resources - Midland	Local Co-ordinate Reference:	Well #706H
Project:	Lea County, NM (NAD 83 NME)	TVD Reference:	KB = 25 @ 3358.0usft (H&P 379)
Site:	Osprey 10	MD Reference:	KB = 25 @ 3358.0usft (H&P 379)
Well:	#706H	North Reference:	Grid
Wellbore:	OH	Survey Calculation Method:	Minimum Curvature
Design:	OH	Database:	EDM 5000.14

MD (usft)	Inc (°)	Azi (azimuth) (°)	TVD (usft)	N/S (usft)	EW (usft)	DLeg (°/100usft)	Build (°/100usft)	Turn (°/100usft)	High to Plan (usft)	Right to Plan (usft)
18,360.0	91.40	359.40	12,499.1	5,770.1	259.8	1.59	-0.21	1.58	10.3	-8.5
18,455.0	90.20	359.20	12,497.8	5,965.1	258.6	1.28	-1.26	-0.21	10.1	-8.1
18,550.0	90.00	359.20	12,497.6	5,960.1	257.3	0.21	-0.21	0.00	11.1	-7.5
18,645.0	91.00	359.80	12,498.8	6,055.1	256.5	1.23	1.05	0.63	11.4	-7.4
18,740.0	91.60	0.30	12,494.6	6,150.1	256.5	0.82	0.63	0.53	10.4	-8.2
18,835.0	89.70	0.20	12,493.6	6,245.1	257.0	2.00	-2.00	-0.11	10.5	-9.4
18,930.0	90.10	0.30	12,493.7	6,340.1	257.4	0.43	0.42	0.11	11.8	-10.5
19,025.0	91.60	0.70	12,492.3	6,435.0	258.2	1.63	1.58	0.42	11.8	-12.1
19,120.0	92.50	1.00	12,488.9	6,530.0	259.6	1.00	0.95	0.32	9.6	-14.2
19,215.0	90.60	0.10	12,486.4	6,624.9	260.5	2.21	-2.00	-0.95	9.1	-15.9
19,310.0	89.30	0.20	12,486.4	6,719.9	260.8	1.37	-1.37	0.11	11.3	-16.8
19,405.0	89.10	0.40	12,487.8	6,814.9	261.3	0.30	-0.21	0.21	14.7	-18.1
19,500.0	89.60	359.80	12,488.8	6,909.9	261.4	0.82	0.53	-0.63	17.9	-19.0
19,594.0	90.50	359.50	12,488.8	7,005.8	260.8	0.99	0.94	-0.31	20.0	-19.1
19,691.0	93.20	359.10	12,485.7	7,100.8	259.7	2.87	2.84	-0.42	19.1	-18.7
19,786.0	94.30	359.00	12,479.5	7,195.6	258.1	1.16	1.16	-0.11	15.0	-17.9
19,880.0	94.10	358.40	12,472.6	7,289.3	256.0	0.67	-0.21	-0.64	10.2	-16.5
19,975.0	95.40	359.00	12,464.7	7,384.0	253.8	1.51	1.37	0.63	4.4	-15.1
20,019.0	95.10	358.80	12,460.7	7,427.8	253.0	0.72	-0.68	-0.23	1.4	-14.6
20,075.0	95.10	358.80	12,455.7	7,483.6	252.0	0.00	0.00	0.00	-2.3	-13.9



Midland PVA

Company:	EOG Resources - Midland	Local Co-ordinate Reference:	Well #706H
Project:	Lea County, NM (NAD 83 NME)	TVD Reference:	KB = 25 @ 3358.0usft (H&P 370)
Site:	Osprey 10	MD Reference:	KB = 25 @ 3358.0usft (H&P 370)
Well:	#706H	North Reference:	Grid
Wellbore:	OH	Survey Calculation Method:	Minimum Curvature
Design:	OH	Database:	EDM 5000.14

Design Annotations				
Measured Depth (usft)	Vertical Depth (usft)	Local Coordinates		Comment
		+N/S (usft)	+E/W (usft)	
12,053.0	12,027.3	-273.4	300.3	KOP, MD:12053.0', TVD:12027.3', N/S:-273.4', E/W:300.3', INC:3.52
12,239.9	12,205.6	-223.0	298.0	FTP Crossing, MD:12239.9', TVD:12205.6', N/S:-223.0', E/W:298.0', INC:27.88
20,019.0	12,460.7	7,427.8	253.0	Last MWD Survey (MD=20019.0')
20,075.0	12,455.7	7,483.6	252.0	Projection to Bit (MD=20075.0')

Checked By: _____ Approved By: _____ Date: _____



Lea County, NM (NAD 83 NME)

Osprey 10 #706H

H&P 379

Plan #1

PROJECT DETAILS: Lea County, NM (NAD 83 NME)

Geodetic System: US State Plane 1983
Datum: North American Datum 1983
Ellipsoid: GRS 1980
Zone: New Mexico Eastern Zone
System Datum: Mean Sea Level

WELL DETAILS: #706H

KB = 25 @ 3358.0usft (H&P 379) 3333.0
Northing 418292.00 Easting 813852.00
Longitude 103° 27' 12.795 W
Latitude 32° 1' 19.172 N

To convert a Magnetic Direction to a Grid Direction, Add 6.25°
To convert a Magnetic Direction to a True Direction, Add 6.72° East
To convert a True Direction to a Grid Direction, Subtract 0.47°

SECTION DETAILS

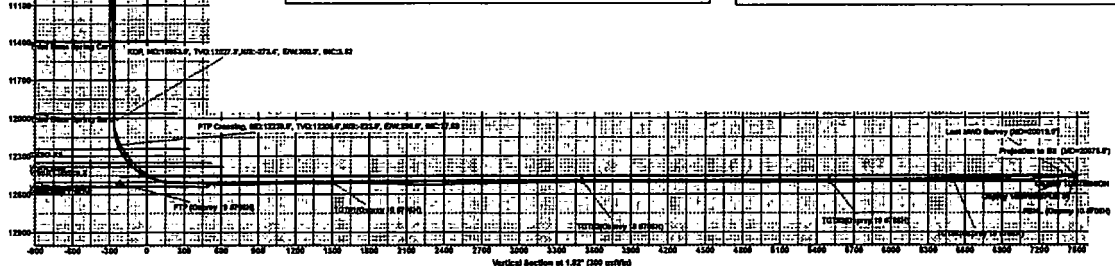
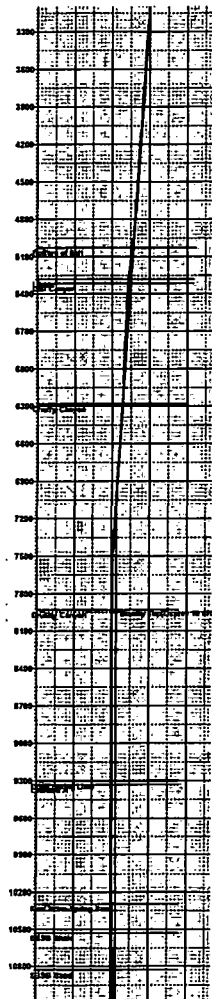
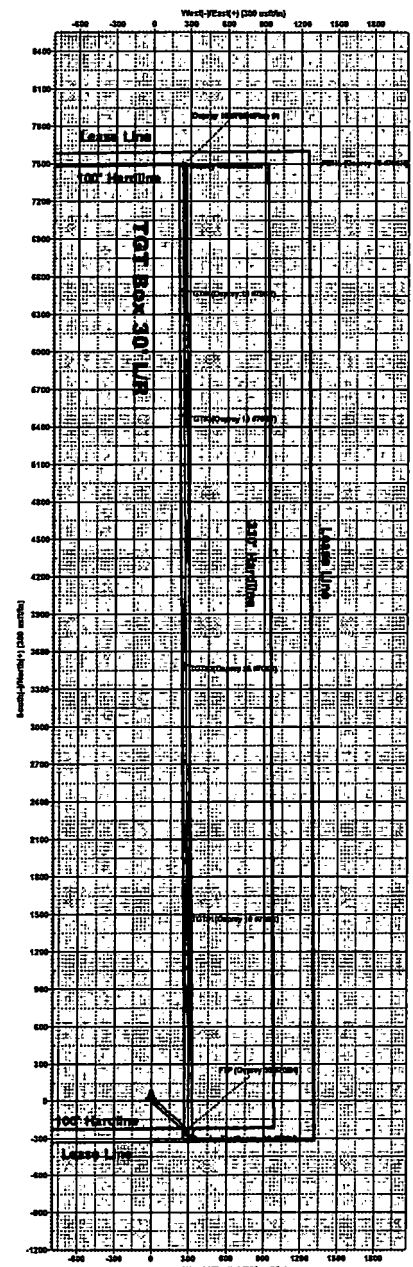
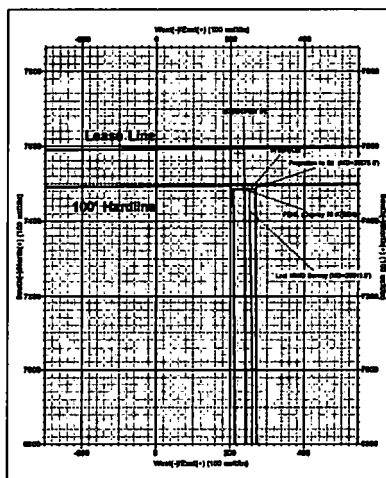
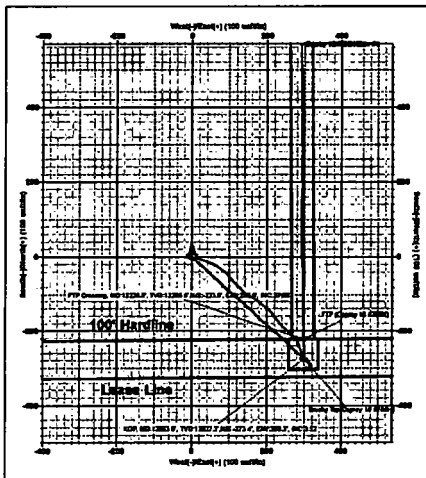
Sec	MD	Inc	Adj	TVD	+N-S	+E-W	Diag	TFace	VSecl	Target	Annotation
1	0.0	0.00	0.00	0.0	0.0	0.0	0.00	0.00	0.0		
2	3000.0	0.00	0.00	3000.0	0.0	0.0	0.00	0.00	0.0		
3	3289.8	6.00	132.49	3298.2	-10.8	11.6	2.00	132.49	-10.2		
4	6883.8	0.00	132.49	6848.8	-282.4	284.4	0.00	0.00	-353.2		
5	7163.6	0.00	0.00	7148.0	-273.0	282.0	2.00	180.00	-283.4		
6	12094.4	0.00	0.00	12033.8	-273.0	286.0	0.00	0.00	-283.4		
7	12006.6	90.00	333.58	12111.2	208.8	294.3	12.00	258.98	217.8		
8	14071.8	90.00	333.58	12500.0	1491.7	284.4	0.00	0.00	1800.0		TOTP1(Osprey 10 #706H)
9	14103.8	90.23	333.58	12488.9	1502.4	284.2	2.00	180.00	1813.7		
10	14093.3	90.23	333.58	12492.0	1493.2	282.8	0.00	0.00	3000.0		TOTR2(Osprey 10 #706H)
11	18104.8	90.00	333.58	12492.0	1493.2	282.8	2.00	-180.00	3811.4		
12	18094.3	90.00	333.58	12492.0	1494.7	283.4	0.00	0.00	8500.0		TOTR3(Osprey 10 #706H)
13	19128.8	90.70	333.58	12491.8	6528.7	283.1	2.00	0.00	8534.9		
14	19028.8	90.70	333.58	12480.0	6435.9	248.7	0.00	0.00	8500.0		TOTR4(Osprey 10 #706H)
15	19124.8	91.29	333.58	12478.5	6534.8	243.4	2.00	0.00	8528.1		
16	20088.6	91.29	333.58	12458.0	7488.0	238.0	0.00	0.00	7493.8		PEHL (Osprey 10 #706H)

CASING DETAILS

No casing data is available

WELLSHORE YARDBY DETAILS (MAP COORDINATES)

Name	TVD	+N-S	+E-W	Northing	Easting
Shooby Top(Osprey 10 #706H)	7831.0	-273.0	288.0	418019.00	813890.00
PEHL (Osprey 10 #706H)	12458.0	7488.0	238.0	422778.00	813890.00
TOTP1(Osprey 10 #706H)	12480.0	6488.0	243.7	421787.00	813877.88
TOTR2(Osprey 10 #706H)	12492.0	5493.2	250.9	418785.00	813820.88
TOTR3(Osprey 10 #706H)	12492.0	6494.7	253.4	420788.70	813805.60
TOTR4(Osprey 10 #706H)	12500.0	1491.7	284.4	418783.70	813828.35
FTP (Osprey 10 #706H)	12516.0	-223.0	298.0	415063.00	813850.00



See Also: Well Log # 706H
Well Log # 706H
Well Log # 706H