

District
1625 S. Ranch Dr., Hobbs, NM 88240
Phone: (505) 393-6161 Fax: (505) 393-0720
District
811 S. First St., Aztec, NM 87410
Phone: (505) 748-4223 Fax: (505) 748-9720
District
1000 E. Broadway, Aztec, NM 87410
Phone: (505) 334-6178 Fax: (505) 334-6170
District
1225 S. St. Francis Dr., Santa Fe, NM 87505
Phone: (505) 476-3460 Fax: (505) 476-3462

State of New Mexico
Energy, Minerals & Natural Resources Department
OIL CONSERVATION DIVISION
1220 South St. Francis Dr.
Santa Fe, NM 87505

Form C-102
Revised August 1, 2011
Submit one copy to appropriate
District Office

☐ AMENDED REPORT

WELL LOCATION AND ACREAGE DEDICATION PLAT

¹ API Number 30-025 46306	² Pool Code 98180	³ Pool Name WC-025 G-09 S253309P; Upr Wolfcamp
⁴ Property Code 39981	⁵ Property Name CASCADE 29 FEDERAL	
⁷ OGRID No. 215099	⁸ Operator Name CIMAREX ENERGY CO.	⁶ Well Number 17H ⁹ Elevation 3402.2'

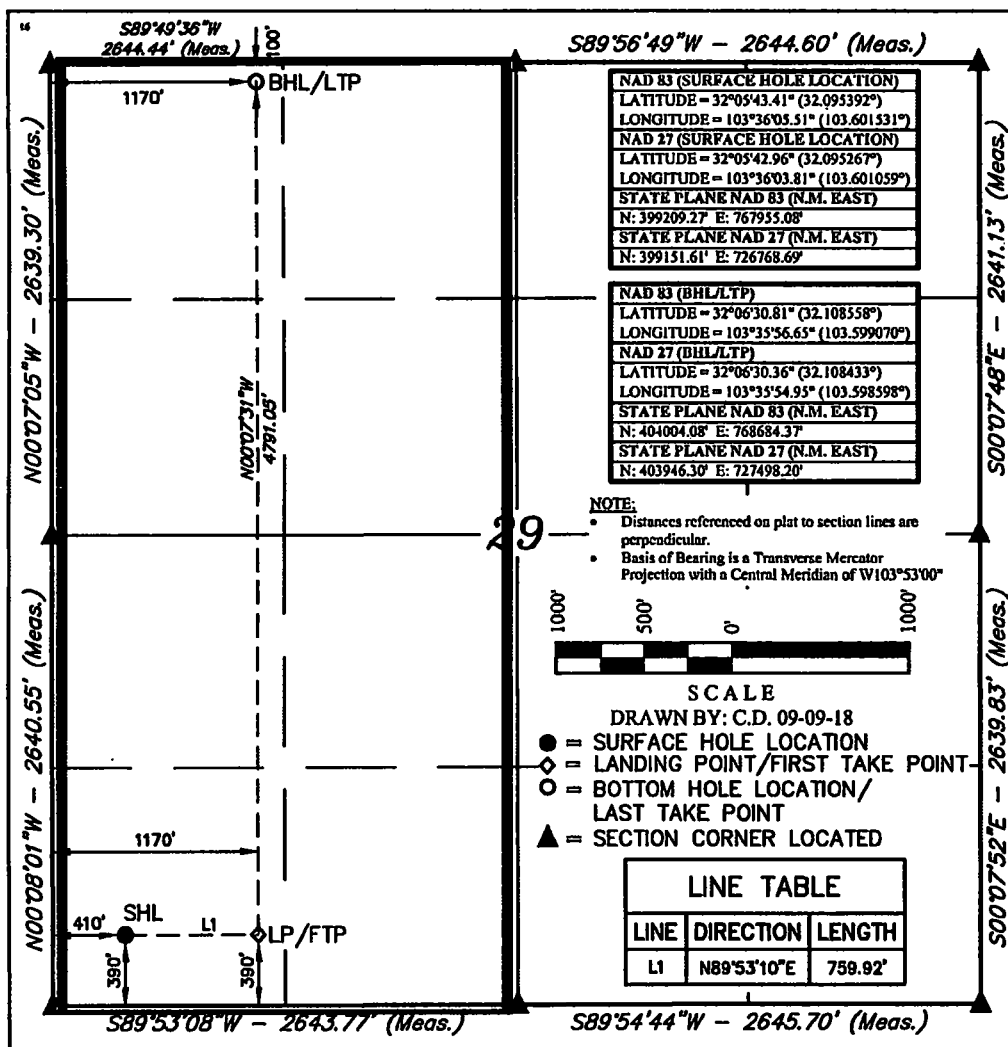
Surface Location

UL or lot no.	Section	Township	Range	Lot Ida	Feet from the	North/South line	Feet from the	East/West line	County
M	29	25S	33E		390	SOUTH	410	WEST	LEA

Bottom Hole Location If Different From Surface

UL or lot no.	Section	Township	Range	Lot Ida	Feet from the	North/South line	Feet from the	East/West line	County
D	29	25S	33E		100	NORTH	1170	WEST	LEA
¹³ Dedicated Acres 320		¹⁴ Joint or Infill		¹⁵ Consolidation Code		¹⁶ Order No.			

No allowable will be assigned to this completion until all interests have been consolidated or a non-standard unit has been approved by the division.



OPERATOR CERTIFICATION

I hereby certify that the information contained herein is true and complete to the best of my knowledge and belief, and that this organization either owns a working interest or unleased mineral interest in the land including the proposed bottom hole location or has a right to drill this well at this location pursuant to a contract with an owner of such a mineral or working interest, or to a voluntary pooling agreement or a compulsory pooling order heretofore entered by the division.

Signature: *Sharon LaValley* Date: 11/13/18

Sharon LaValley
Printed Name

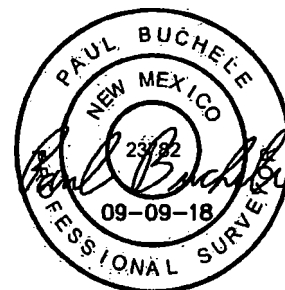
slavalley@cimarex.com
E-mail Address

SURVEYOR CERTIFICATION

I hereby certify that the well location shown on this plat was plotted from field notes of actual surveys made by me or under my supervision, and that the same is true and correct to the best of my belief.

July 07, 2018

Date of Survey
Signature and Seal of Professional Surveyor:



Certificate Number: