

RECEIVED
Aug 22 2019
District I
1000 Rio Brazos Dr., Santa Fe, NM 87505
Phone: (505) 476-3460 Fax: (505) 476-3462
District II
811 S. French Dr., Hobbs, NM 88241
Phone: (575) 395-4661 Fax: (575) 395-0720
District III
1000 Rio Brazos Dr., Aztec, NM 87410
Phone: (505) 351-0078 Fax: (505) 334-6170
District IV
1220 S. St. Francis Dr., Santa Fe, NM 87505
Phone: (505) 476-3460 Fax: (505) 476-3462

State of New Mexico
Energy, Minerals & Natural Resources Department
OIL CONSERVATION DIVISION
1220 South St. Francis Dr.
Santa Fe, NM 87505

Form C-102
Revised August 1, 2011
Submit one copy to appropriate
District Office
☐ AMENDED REPORT

WELL LOCATION AND ACREAGE DEDICATION PLAT

1 API Number 30-025 - 46314		2 Pool Code 97900		3 Pool Name Red Hills Upper Bone Spring Shale	
4 Property Code 314104		5 Property Name CASCADE 28 FEDERAL		6 Well Number 86H	
7 OGRID No. 215099		8 Operator Name CIMAREX ENERGY CO.		9 Elevation 3365.6	

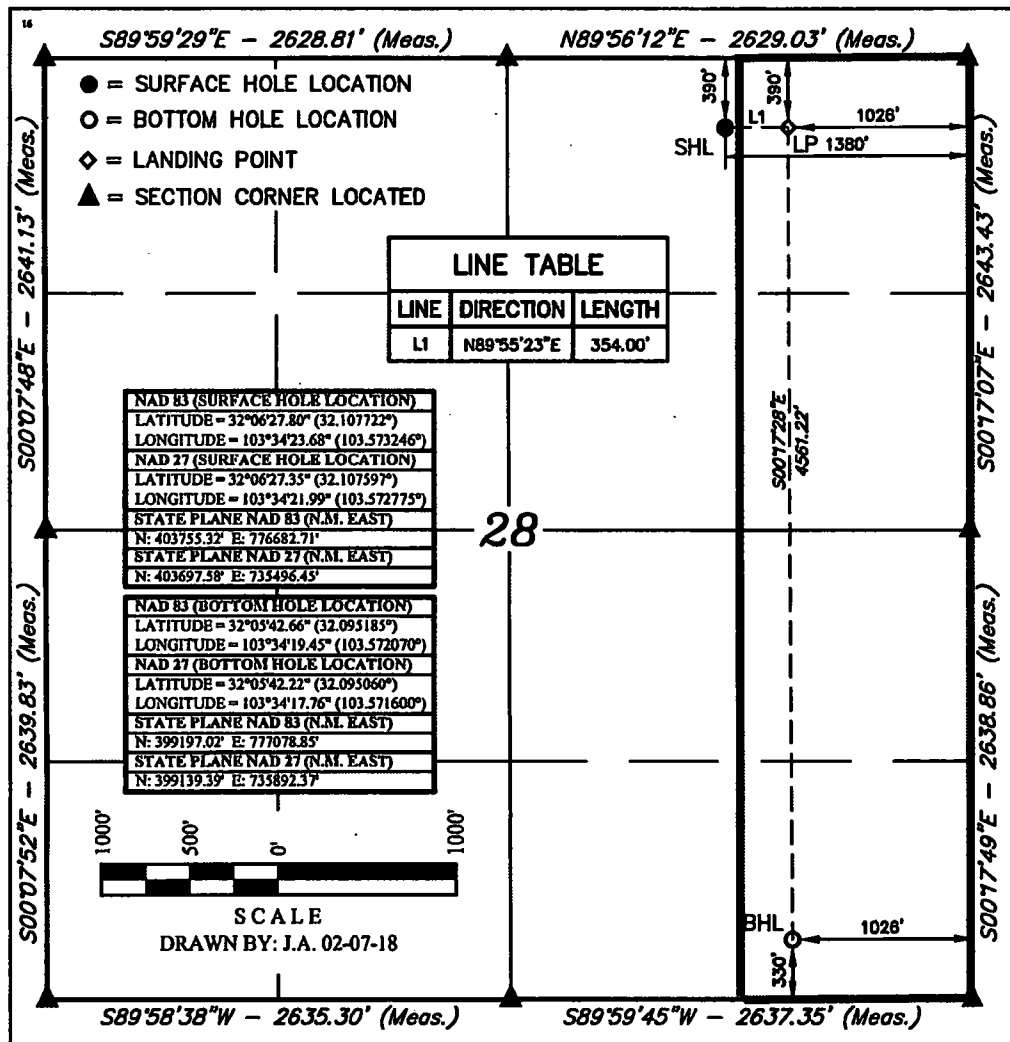
"Surface Location

UL or lot no.	Section	Township	Range	Lot Idn	Feet from the	North/South line	Feet from the	East/West line	County
B	28	25S	33E		390	NORTH	1380	EAST	LEA

"Bottom Hole Location If Different From Surface

UL or lot no.	Section	Township	Range	Lot Idn	Feet from the	North/South line	Feet from the	East/West line	County
P	28	25S	33E		330	SOUTH	1026	EAST	LEA
11 Dedicated Acres 160		12 Joint or Infill		13 Consolidation Code		14 Order No.			

No allowable will be assigned to this completion until all interests have been consolidated or a non-standard unit has been approved by the division.



"OPERATOR CERTIFICATION
I hereby certify that the information contained herein is true and complete to the best of my knowledge and belief, and that this organization either owns a working interest or unleased mineral interest in the land including the proposed bottom hole location or has a right to drill this well at this location pursuant to a contract with an owner of such a mineral or working interest, or to a voluntary pooling agreement or a compulsory pooling order therefore entered by the division.

Signature: Aricka Easterling
Date: 8/15/18

Printed Name: Aricka Easterling
E-mail Address: aeasterling@cimarex.com

"SURVEYOR CERTIFICATION
I hereby certify that the well location shown on this plat was plotted from field notes of actual surveys made by me or under my supervision, and that the same is true and correct to the best of my belief.

January 24, 2018
Date of Survey
Signature and Seal of Professional Surveyor:
PAUL BUCHELE
NEW MEXICO
23192
02-07-18
PROFESSIONAL SURVEYOR

Certificate Number: