

UNITED STATES  
DEPARTMENT OF THE INTERIOR  
BUREAU OF LAND MANAGEMENT  
WELL COMPLETION OR RECOMPLETION REPORT AND LOG

OCD Hobbs

FORM APPROVED  
OMB No. 1004-0137  
Expires: July 31, 2010

1a. Type of Well ☒ Oil Well ☐ Gas Well ☐ Dry ☐ Other  
b. Type of Completion ☒ Plug Back ☐ Work Over ☐ Deepen ☐ Other

2. Name of Operator: AMEREDEV OPERATING LLC Contact: CHRISTIE HANNA E-Mail: CHANNA@AMEREDEV.COM

3. Address: 5707 SOUTHWEST PARKWAY BLDG 1 STE 275 AUSTIN, TX 78735 3a. Phone No. (include area code): 7373004723

4. Location of Well (Report location clearly and in accordance with Federal requirements)\*  
At surface: Sec 33 T25S R36E Mer NMP SESW 200FNL 1700FWL 32.080129 N Lat, 103.273130 W Lon  
At top prod interval reported below: Sec 9 T26S R36E Mer NMP NESW 2473FSL 1698FWL 32.057345 N Lat, 103.273128 W Lon  
At total depth: Sec 9 T26S R36E Mer NMP SESW 531FSL 1623FWL 32.052008 N Lat, 103.273369 W Lon

5. Lease Serial No.: NMNM136235

6. If Indian, Allottee or Tribe Name

7. Unit or CA Agreement Name and No.: NMNM139083

8. Lease Name and Well No.: FIRETHORN FED COM 26 36 04 113H

9. API Well No.: 30-025-44961-00-S1

10. Field and Pool, or Exploratory: WC-025 G09 S263619C-WOLFCAMP

11. Sec., T., R., M., or Block and Survey or Area: Sec 33 T25S R36E Mer NMP

12. County or Parish: LEA 13. State: NM

14. Date Spudded: 07/11/2018 15. Date T.D. Reached: 11/10/2018 16. Date Completed: 01/27/2019 ☐ D & A ☒ Ready to Prod.

17. Elevations (DF, KB, RT, GL)\*: 2998 GL

18. Total Depth: MD 21730 TVD 11921 19. Plug Back T.D.: MD 21717 TVD 11921 20. Depth Bridge Plug Set: MD 21713 TVD 11921

21. Type Electric & Other Mechanical Logs Run (Submit copy of each): GR 22. Was well cored? ☐ No ☒ Yes (Submit analysis)  
Was DST run? ☒ No ☐ Yes (Submit analysis)  
Directional Survey? ☐ No ☒ Yes (Submit analysis)

## 23. Casing and Liner Record (Report all strings set in well)

Hole Size	Size/Grade	Wt. (#/ft.)	Top (MD)	Bottom (MD)	Stage Cementer Depth	No. of Sk. & Type of Cement	Slurry Vol. (BBL)	Cement Top*	Amount Pulled
17.500	13.375	68.0	0	1351		1150		0	
12.250	9.625	40.0	0	4685		1000		0	
8.750	7.625	29.7	0	10637		600		766	
6.750	5.500	20.0	0	21717		1465		2010	

## 24. Tubing Record

Size	Depth Set (MD)	Packer Depth (MD)	Size	Depth Set (MD)	Packer Depth (MD)	Size	Depth Set (MD)	Packer Depth (MD)
2.875	10776	10781						

## 25. Producing Intervals

Formation	Top	Bottom	Perforated Interval	Size	No. Holes	Perf. Status
A) WOLFCAMP	19799	21717	19799 TO 21717	0.000	936	OPEN
B)						
C)						
D)						

## 26. Perforation Record

## 27. Acid, Fracture, Treatment, Cement Squeeze, Etc.

Depth Interval	Amount and Type of Material
19799 TO 21717	5,561,026 LBS PROP. FRAC FOCUS DISCLOSURE 1-31-2019

## 28. Production - Interval A

Date First Produced	Test Date	Hours Tested	Test Production	Oil BBL	Gas MCF	Water BBL	Oil Gravity Corr. API	Gas Gravity	Production Method
02/01/2019	02/13/2019	24	→	581.0	1848.0	1676.0			FLows FROM WELL
Choke Size	Tbg. Press. Flwg.	Csg. Press.	24 Hr. Rate	Oil BBL	Gas MCF	Water BBL	Gas:Oil Ratio	Well Status	
64	SI	525	→	581	1848	1676		POW	

## 28a. Production - Interval B

Date First Produced	Test Date	Hours Tested	Test Production	Oil BBL	Gas MCF	Water BBL	Oil Gravity Corr. API	Gas Gravity	Production Method
			→						
Choke Size	Tbg. Press. Flwg.	Csg. Press.	24 Hr. Rate	Oil BBL	Gas MCF	Water BBL	Gas:Oil Ratio	Well Status	
	SI		→						

ACCEPTED FOR RECORD  
AUG 17 2019  
Dinah Negrete  
BUREAU OF LAND MANAGEMENT  
CARLSBAD FIELD OFFICE

(See Instructions and spaces for additional data on reverse side)

ELECTRONIC SUBMISSION #476014 VERIFIED BY THE BLM WELL INFORMATION SYSTEM

\*\* BLM REVISED \*\* BLM REVISED \*\* BLM REVISED \*\* BLM REVISED \*\* BLM REVISED \*\*

Reclamation Due 7/27/2019

## 28b. Production - Interval C

Date First Produced	Test Date	Hours Tested	Test Production →	Oil BBL	Gas MCF	Water BBL	Oil Gravity Corr. API	Gas Gravity	Production Method
Choke Size	Tbg. Press. Flwg. SI	Csg. Press.	24 Hr. Rate →	Oil BBL	Gas MCF	Water BBL	Gas:Oil Ratio	Well Status	

## 28c. Production - Interval D

Date First Produced	Test Date	Hours Tested	Test Production →	Oil BBL	Gas MCF	Water BBL	Oil Gravity Corr. API	Gas Gravity	Production Method
Choke Size	Tbg. Press. Flwg. SI	Csg. Press.	24 Hr. Rate →	Oil BBL	Gas MCF	Water BBL	Gas:Oil Ratio	Well Status	

29. Disposition of Gas(Sold, used for fuel, vented, etc.)  
FLARED

## 30. Summary of Porous Zones (Include Aquifers):

Show all important zones of porosity and contents thereof: Cored intervals and all drill-stem tests, including depth interval tested, cushion used, time tool open, flowing and shut-in pressures and recoveries.

## 31. Formation (Log) Markers

Formation	Top	Bottom	Descriptions, Contents, etc.	Name	Top
					Meas. Depth
CHERRY CANYON	5827	6749		ANHYDRITE	1392
BRUSHY CANYON	6749	7858		TOP OF SALT	1930
				LAMAR	5062
				BELL CANYON	5084
				CHERRY CANYON	5827
				BRUSHY CANYON	6749
				BONE SPRING	7858
				WOLFCAMP	11419

## 32. Additional remarks (include plugging procedure):

## 33. Circle enclosed attachments:

- |   |                    |               |                       |
|---|--------------------|---------------|-----------------------|
| 1. Electrical/Mechanical Logs (1 full set req'd.)     | 2. Geologic Report | 3. DST Report | 4. Directional Survey |
| 5. Sundry Notice for plugging and cement verification | 6. Core Analysis   | 7. Other:     |                       |

## 34. I hereby certify that the foregoing and attached information is complete and correct as determined from all available records (see attached instructions):

Electronic Submission #476014 Verified by the BLM Well Information System.

For AMEREDEV OPERATING LLC, sent to the Hobbs

Committed to AFMSS for processing by DEBORAH HAM on 07/31/2019 (19DMH0180SE)

Name (please print) ZACHARY BOYD

Title OPERATIONS SUPERINTENDENT

Signature (Electronic Submission)

Date 07/31/2019

Title 18 U.S.C. Section 1001 and Title 43 U.S.C. Section 1212, make it a crime for any person knowingly and willfully to make to any department or agency of the United States any false, fictitious or fraudulent statements or representations as to any matter within its jurisdiction.

**\*\* REVISED \*\* REVISED \*\* REVISED \*\* REVISED \*\* REVISED \*\* REVISED \*\* REVISED \*\***

District I  
1625 N. French Dr., Hobbs, NM 88240  
Phone: (575) 393-6161 Fax: (575) 393-0720  
District II  
811 S. First St., Artesia, NM 88210  
Phone: (575) 748-1283 Fax: (575) 748-9720  
District III  
1000 Rio Brazos Road, Aztec, NM 87410  
Phone: (505) 334-6178 Fax: (505) 334-6170  
District IV  
1220 S. St. Francis Dr., Santa Fe, NM 87505  
Phone: (505) 476-3460 Fax: (505) 476-3462

State of New Mexico  
Energy, Minerals & Natural Resources  
Department  
OIL CONSERVATION DIVISION  
1220 South St. Francis Dr.  
Santa Fe, NM 87505

FORM C-102

Revised August 1, 2011

Submit one copy to appropriate

District Office

☐ AMENDED REPORT

WELL LOCATION AND ACREAGE DEDICATION PLAT **619C**

<sup>1</sup> API Number 30-025-44961	<sup>2</sup> Pool Code 98234	<sup>3</sup> Pool Name WC-025 G-09 S263620C / WOLFCAMP
<sup>4</sup> Property Code 321646	<sup>5</sup> Property Name FIRETHORN FED COM 26 36 04	<sup>6</sup> Well Number 113H
<sup>7</sup> OGRID No. 372224	<sup>8</sup> Operator Name AMEREDEV OPERATING, LLC.	<sup>9</sup> Elevation 2998'

<sup>10</sup>Surface Location

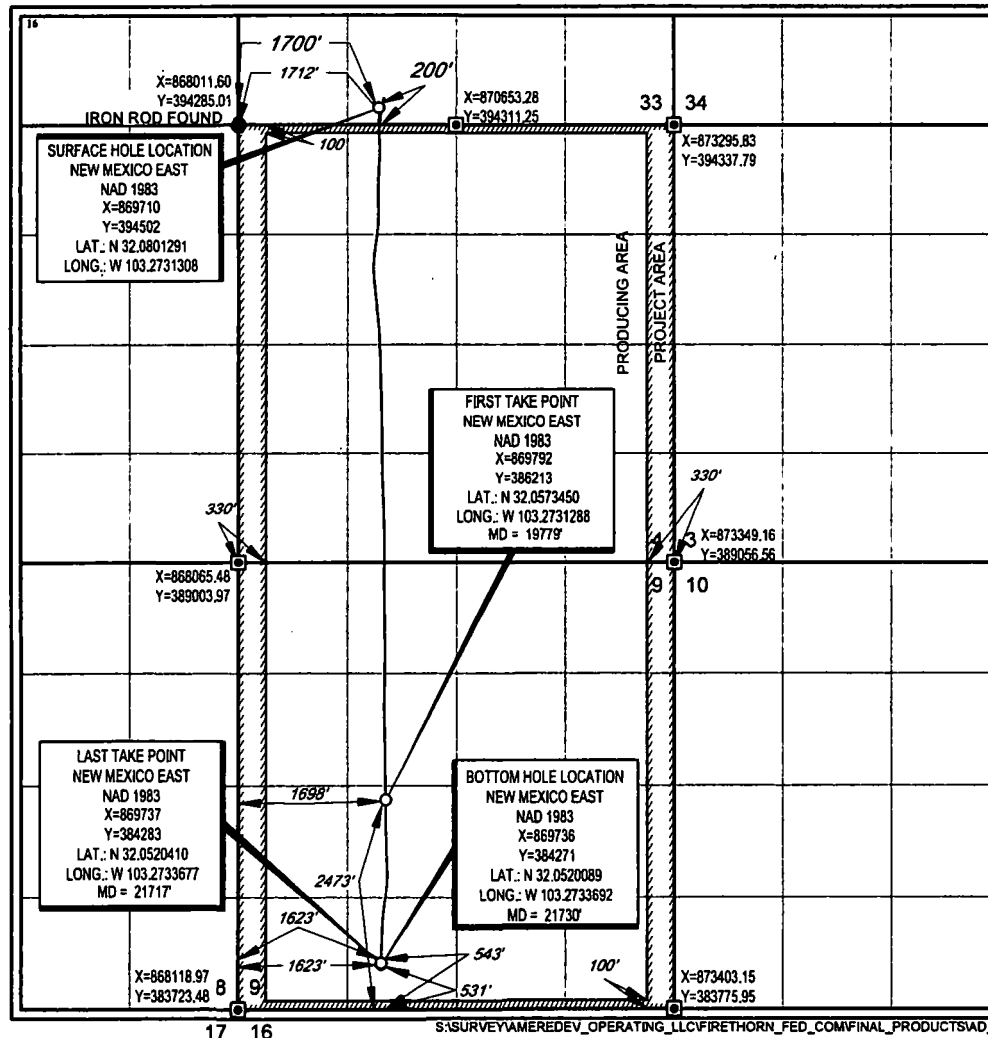
UL or lot no.	Section	Township	Range	Lot Idn	Feet from the	North/South line	Feet from the	East/West line	County
N	33	25-S	36-E	-	200'	NORTH	1700'	WEST	LEA

<sup>11</sup>Bottom Hole Location If Different From Surface

UL or lot no.	Section	Township	Range	Lot Idn	Feet from the	North/South line	Feet from the	East/West line	County
N	9	26-S	36-E	-	531'	SOUTH	1623'	WEST	LEA

<sup>12</sup> Dedicated Acres 320	<sup>13</sup> Joint or Infill	<sup>14</sup> Consolidation Code	<sup>15</sup> Order No.
--------------------------------------	-------------------------------	----------------------------------	-------------------------

No allowable will be assigned to this completion until all interests have been consolidated or a non-standard unit has been approved by the division.



<sup>17</sup>OPERATOR CERTIFICATION

I hereby certify that the information contained herein is true and complete to the best of my knowledge and belief, and that this organization either owns a working interest or unleased mineral interest in the land including the proposed bottom hole location or has a right to drill this well at this location pursuant to a contract with an owner of such a mineral or working interest, or to a voluntary pooling agreement or a compulsory pooling order heretofore entered by the division.

3/4/19

Signature

Date

Zachary Boyd

Printed Name

zboyd@ameredev.com

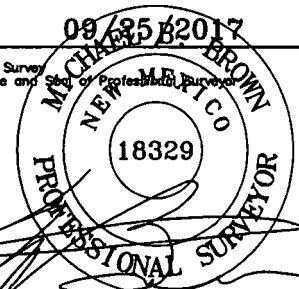
E-mail Address

<sup>18</sup>SURVEYOR CERTIFICATION

I hereby certify that the well location shown on this plat was plotted from field notes of actual surveys made by me or under my supervision, and that the same is true to the best of my belief.

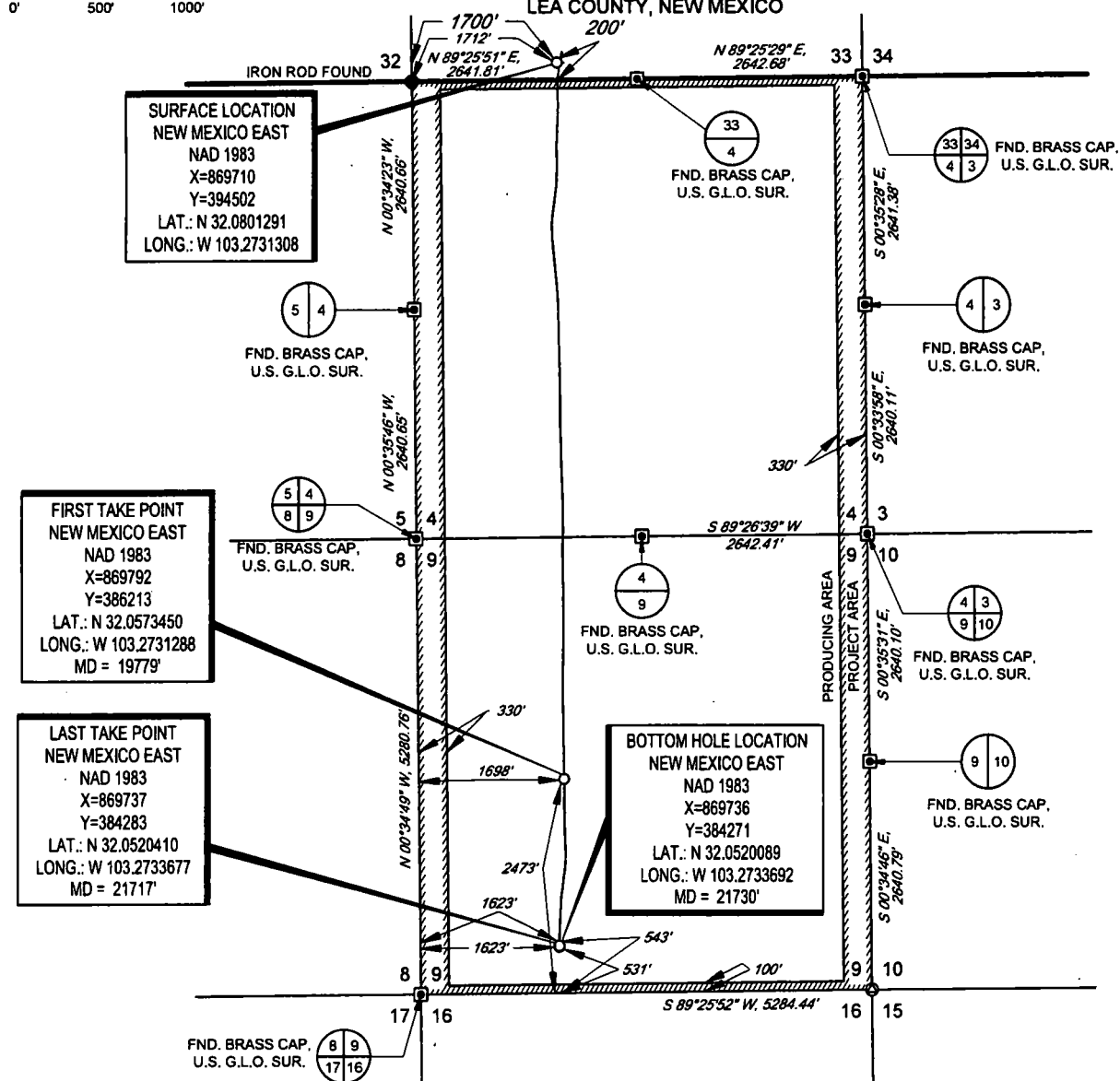
Date of Survey

Signature and Seal of Professional Surveyor

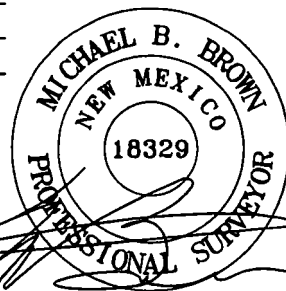


Certificate Number

SECTION 33, TOWNSHIP 25-S, RANGE 36-E, N.M.P.M.  
LEA COUNTY, NEW MEXICO



LEASE NAME & WELL NO.: FIRETHORN FED COM 26 36 04 113H  
SECTION 33 TWP 25-S RGE 36-E SURVEY N.M.P.M.  
COUNTY LEA STATE NM ELEVATION 2998'  
DESCRIPTION 200' FNL & 1700' FWL



Michael Blake Brown, P.S. No. 18329  
FEBRUARY 27, 2019



**TOPOGRAPHIC**  
LOYALTY INNOVATION LEGACY

1400 EVERMAN PARKWAY, Ste. 146 • FT. WORTH, TEXAS 76140  
TELEPHONE: (817) 744-7512 • FAX (817) 744-7554  
TEXAS FIRM REGISTRATION NO. 10042504  
[WWW.TOPOGRAPHIC.COM](http://WWW.TOPOGRAPHIC.COM)

<b>FIRETHORN FED COM</b> <b>26 36 04 113H</b> <b>AS-DRILLED</b>	<b>REVISION:</b>	
<b>DATE:</b> 02/27/19		
<b>FILE:</b> AD_FIRETHORN_FED_COM_26_36_04_113H		
<b>DRAWN BY:</b> JDR		
<b>SHEET:</b> 1 OF 1		

- NOTES:
1. ORIGINAL DOCUMENT SIZE: 8.5" X 11"
  2. ALL BEARINGS, DISTANCES, AND COORDINATE VALUES CONTAINED HEREIN ARE GRID BASED UPON THE NEW MEXICO STATE PLANE COORDINATE SYSTEM, EAST ZONE, U.S. SURVEY FEET, NORTH AMERICAN DATUM 1983.
  3. THIS WELL LOCATION SHOWN HEREON HAS BEEN SURVEYED ON THE GROUND UNDER MY SUPERVISION AND PREPARED ACCORDING TO THE EVIDENCE FOUND AT THE TIME OF SURVEY, AND DATA PROVIDED BY AMEREVER OPERATING, LLC. THIS CERTIFICATION IS MADE AND LIMITED TO THOSE PERSONS OR ENTITIES SHOWN ON THE FACE OF THIS PLAT AND IS NON-TRANSFERABLE. THIS SURVEY IS CERTIFIED FOR THIS TRANSACTION ONLY.