

District I
1625 N. French Dr., Hobbs, NM 88240
Phone: (575) 393-6161 Fax: (575) 393-0720
District II
811 S. First St., Artesia, NM 88210
Phone: (575) 748-1283 Fax: (575) 748-9720
District III
1000 Rio Brazos Road, Aztec, NM 87410
Phone: (505) 334-6178 Fax: (505) 334-6170
District IV
1220 S. St. Francis Dr., Santa Fe, NM 87505
Phone: (505) 476-3460 Fax: (505) 476-3462

State of New Mexico
Energy, Minerals & Natural Resources Department
OIL CONSERVATION DIVISION
1220 South St. Francis Dr.
Santa Fe, NM 87505

HOBBS OCD

SEP 05 2019

RECEIVED

Form C-102
Revised August 1, 2011
Submit one copy to appropriate
District Office

AMENDED REPORT

WELL LOCATION AND ACREAGE DEDICATION PLAT

¹ API Number 30-025-45290	² Pool Code 98180	³ Pool Name WC-025 G-09 S253309P; Upr Wolfcamp
⁴ Property Code 319775	⁵ Property Name VACA DRAW 20-17 FEDERAL	⁶ Well Number 1311
⁷ OGRID No. 215099	⁸ Operator Name CIMAREX ENERGY CO.	⁹ Elevation 3423.0'

"Surface Location

UL or lot no.	Section	Township	Range	Lot Idn	Feet from the	North/South line	Feet from the	East/West line	County
M	20	25S	33E		330	SOUTH	730	WEST	LEA

"Bottom Hole Location If Different From Surface

UL or lot no.	Section	Township	Range	Lot Idn	Feet from the	North/South line	Feet from the	East/West line	County
D	17	25S	33E		50	NORTH	1629	WEST	LEA
¹⁰ Dedicated Acres 640	¹¹ Joint or Infill	¹² Consolidation Code	¹³ Order No.						

No allowable will be assigned to this completion until all interests have been consolidated or a non-standard unit has been approved by the division.

"NOTE:

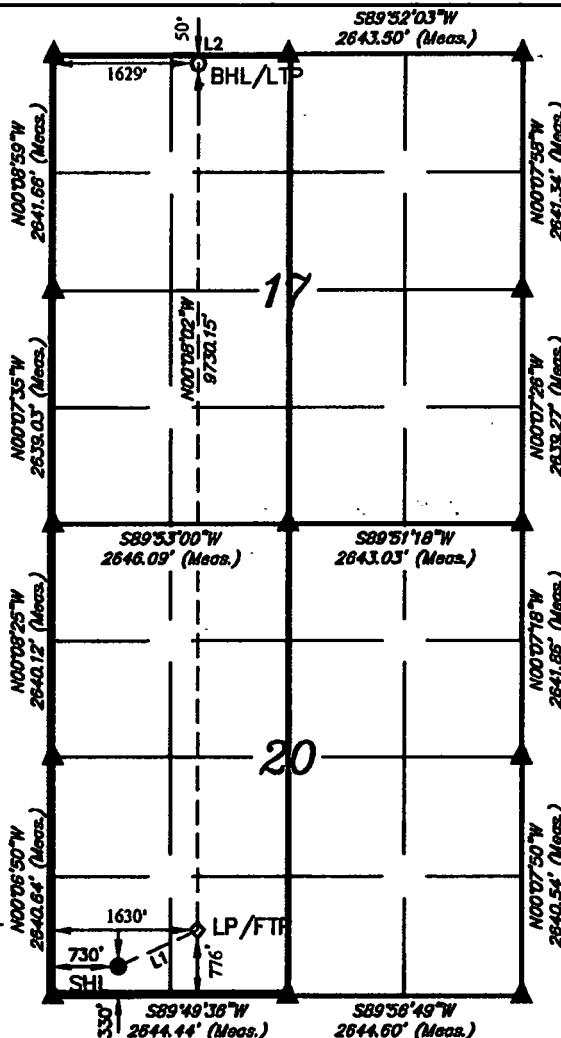
- Distances referenced on plat to section lines are perpendicular.
- Basis of Bearing is a Transverse Mercator Projection with a Central Meridian of W103°53'00"

NAD 83 (SURFACE LOCATION)
LATITUDE = 32°06'35.06" (32.109739)
LONGITUDE = 103°36'01.76" (103.600489)
NAD 27 (SURFACE LOCATION)
LATITUDE = 32°06'34.61" (32.109614)
LONGITUDE = 103°36'00.06" (103.600017)
STATE PLANE NAD 83 (N.M. EAST)
N: 404430.85 U: 768241.87
STATE PLANE NAD 27 (N.M. EAST)
N: 404373.06 E: 727055.72



SCALE
REV: 2 10-18-18
C.M.T. (BHL MOVE)

- = SURFACE HOLE LOCATION
- ◆ = LANDING POINT/FIRST TAKE POINT
- = BOTTOM HOLE LOCATION/LAST TAKE POINT
- ▲ = SECTION CORNER LOCATED



"OPERATOR
CERTIFICATION

I hereby certify that the information contained herein is true and complete to the best of my knowledge and belief, and that this organization either owns a working interest or unleased mineral interest in the land including the proposed bottom hole location or has a right to drill this well at this location pursuant to a contract with an owner of such a mineral or working interest, or to a voluntary pooling agreement or a compulsory pooling order heretofore entered by the division.

Signature: Pam Stevens Date: 07/11/2019

Printed Name: Pam Stevens

Printed Name

pstevens@cimarex.com

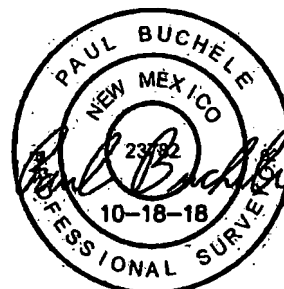
E-mail Address

"SURVEYOR
CERTIFICATION

I hereby certify that the well location shown on this plat was plotted from field notes of actual surveys made by me or under my supervision, and that the same is true and correct to the best of my belief.

January 19, 2017

Date of Survey
Signature and Seal of Professional Surveyor:



Certificate Number: