

State of New Mexico
Energy, Minerals & Natural Resources Department
OIL CONSERVATION DIVISION
1220 South St. Francis Dr.
Santa Fe, NM 87505

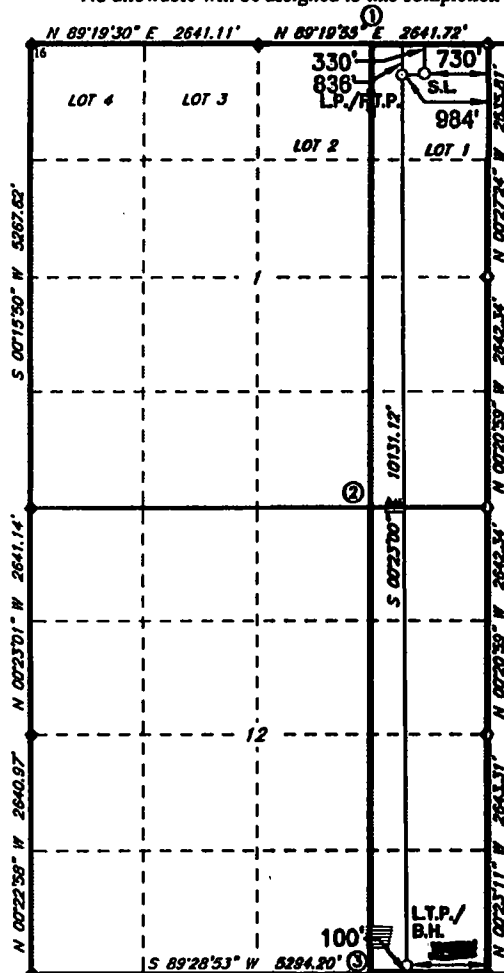
Form C-102
Revised August 1, 2011
Submit one copy to appropriate
District Office

☐ AMENDED REPORT

WELL LOCATION AND ACREAGE DEDICATION PLAT

¹ API Number 30-025-43738		² Pool Code 17644		³ Pool Name DIAMONDTAIL; BONE SPRING					
⁴ Property Code 317588		⁵ Property Name CORIANDER AOC 1-12 STATE					⁶ Well Number 3H		
⁷ GRID NO. 215099		⁸ Operator Name CIMAREX ENERGY COMPANY					⁹ Elevation 3752'		
¹⁰ Surface Location									
UL or lot no. A	Section 1	Township 23S	Range 32E	Lot Ldn 1	Feet from the 330	North/South line NORTH	Feet From the 730	East/West line EAST	County LEA
¹¹ Bottom Hole Location If Different From Surface									
UL or lot no. P	Section 12	Township 23S	Range 32E	Lot Ldn 7	Feet from the 100	North/South line SOUTH	Feet from the 988	East/West line EAST	County LEA
¹² Dedicated Acres 319.95		¹³ Joint or Infill		¹⁴ Consolidation Code		¹⁵ Order No.			

No allowable will be assigned to this completion until all interest have been consolidated or a non-standard unit has been approved by the division.



GEODETIC DATA
NAD 83 GRID - NM EAST

SURFACE LOCATION (S.I.)
N: 488209.4 - E: 760984.1
LAT: 32.3401543° N
LONG: 103.6221382° W
LAT: 32°20'24.5581" N
LONG: 103°37'19.6981" W

LANDING POINT (L.P.)
~~FIRST TAKE POINT (1.T.P.)~~
~~N: 488208.3 - E: 760724.0~~
~~LAT: 32.3401506° N~~
~~LONG: 103.6221805° W~~
~~LAT: 32°20'24.5425" N~~
~~LONG: 103°37'22.7298" W~~

LAST TAKE POINT (L.T.P.)
BOTTOM HOLE (B.H.)
N: 478077.5 - E: 760791.8
LAT: 32.3403089° N
LONG: 103.6222785° W
LAT: 32°18'44.3125" N
LONG: 103°37'22.7228" W

CALCULATED POINTS
1: N 488332.5 - E 760390.8
2: N 488325.7 - E 760426.7
3: N 477974.5 - E 760459.2

17 OPERATOR CERTIFICATION

I hereby certify that the information contained herein is true and complete to the best of my knowledge and belief, and that this organization either owns a working interest or unleased mineral interest in the land including the proposed bottom hole location or has a right to drill this well at this location pursuant to a contract with an owner of such a mineral or working interest, or a voluntary pooling agreement or a compulsory pooling order bearing effect on this location.

Signature _____ Date **1/17/19**
Terri Stathem
 Printed Name _____
tstathem@cimarex.com
 E-mail Address _____

18 SURVEYOR CERTIFICATION

I hereby certify that the well location shown on this plat was plotted from field notes of actual surveys made by me or under my supervision, and that the same is true and correct to the best of my belief.

3-22-2017

Date of Survey _____

Signature and Seal of Professional Surveyor

10034
Certificate Number

REV: 7-31-18

RRC-Job No.: LS1703167B

District I
1625 N. French Dr., Hobbs, NM 88240
Phone: (575) 393-6161 Fax: (575) 393-0720
District II
811 S. First St., Artesia, NM 88210
Phone: (575) 748-1283 Fax: (575) 748-9720
District III
1000 Rio Brazos Road, Aztec, NM 87410
Phone: (505) 334-6178 Fax: (505) 334-6170
District IV
1220 S. St. Francis Dr., Santa Fe, NM 87505
Phone: (505) 476-3460 Fax: (505) 476-3462

State of New Mexico
Energy, Minerals & Natural Resources Department
OIL CONSERVATION DIVISION
1220 South St. Francis Dr.
Santa Fe, NM 87505

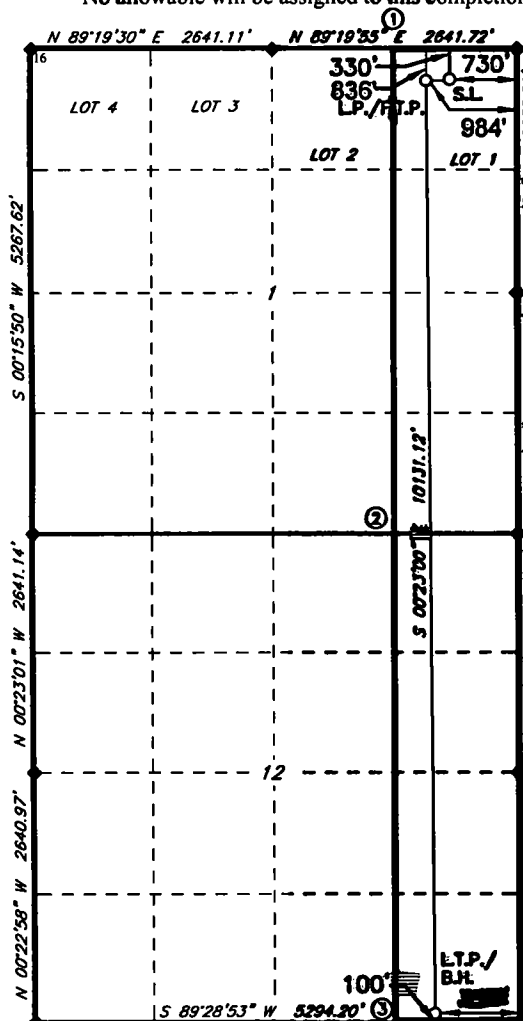
Form C-102
Revised August 1, 2011
Submit one copy to appropriate
District Office

☐ AMENDED REPORT

WELL LOCATION AND ACREAGE DEDICATION PLAT

1 API Number 30-025-43738		2 Pool Code 17644		3 Pool Name DIAMONDTAIL; BONE SPRING					
4 Property Code 317588		5 Property Name CORIANDE AOC 1-12 STATE						6 Well Number 3H	
7 OGRID NO. 215099		8 Operator Name CIMAREX ENERGY COMPANY						9 Elevation 3752'	
10 Surface Location									
UL or lot no. 1	Section 1	Township 23S	Range 32E	Lot Idn	Feet from the 330	North/South line NORTH	Feet from the 730	East/West line EAST	County LEA
11 Bottom Hole Location If Different From Surface									
UL or lot no. P	Section 12	Township 23S	Range 32E	Lot Idn	Feet from the 100	North/South line SOUTH	Feet from the 988	East/West line EAST	County LEA
12 Dedicated Acres 319.95		13 Joint or Infill		14 Consolidation Code		15 Order No.			

No allowable will be assigned to this completion until all interest have been consolidated or a non-standard unit has been approved by the division.



GEODETTIC DATA
NAD 83 GRID - NM EAST

SURFACE LOCATION (S.L.)
N: 488209.4 - E: 760984.1
LAT: 32.3401543° N
LONG: 103.6221382° W
LAT: 32°20'24.5581" N
LONG: 103°37'19.6981" W

LANDING POINT (L.P.)
FIRST TAKE POINT (F.T.P.)
N: 488209.4 - E: 760724.0
LAT: 32°20'15.06" N
LONG: 103.6221382° W
LAT: 32°20'24.542" N
LONG: 103°37'22.7298" W

LAST TAKE POINT (L.T.P.)
BOTTOM HOLE (B.H.)
N: 47807.1 - E: 760791.8
LAT: 32°20'23.089" N
LONG: 103.6221382° W
LAT: 32°18'44.312" N
LONG: 103°37'22.7228" W

CALCULATED POINTS
1: N 488532.5 - E 760390.8
2: N 483257.1 - E 760426.7
3: N 477974.5 - E 760459.2

◆ = SECTION CORNER LOCATED
0 500 1,000 2,000 Feet

11 OPERATOR CERTIFICATION

I hereby certify that the information contained herein is true and complete to the best of my knowledge and belief, and that this organization either owns a working interest or unleased mineral interest in the land including the proposed bottom hole location or has a right to drill this well at this location pursuant to a contract with an owner of such a mineral or working interest, or to a voluntary pooling agreement or a compulsory pooling order heretofore entered by the Division.

Signature: *[Signature]* Date: 1/17/19
Printed Name: Teri Stathem
E-mail Address: tsthathem@cimarex.com

12 SURVEYOR CERTIFICATION

I hereby certify that the well location shown on this plat was plotted from field notes of actual surveys made by me or under my supervision, and that the same is true and correct to the best of my belief.

3-22-2017
Date of Survey
Signature and Seal of Professional Surveyor: *[Signature]*
10034
Certificate Number
REV: 7-31-18

RRG-Job No.: LS1703167B