

UNITED STATES  
DEPARTMENT OF THE INTERIOR  
BUREAU OF LAND MANAGEMENTFORM APPROVED  
OMB No. 1004-0137  
Expires: July 31, 2010

## WELL COMPLETION OR RECOMPLETION REPORT AND LOG

1a. Type of Well ☒ Well ☐ Gas Well ☐ Dry ☐ Other

b. Type of Completion ☒ New Well ☐ Work Over ☐ Deepen ☐ Plug Back ☐ Other

2. Name of Operator MATADOR PRODUCTION COMPANY Contact: RUSTY KLEIN  
MATADOR PRODUCTION COMPANY E-Mail: rusty.klein@matadorresources.com

3. Address 5400 LBJ FREEWAY SUITE 1500 DALLAS, TX 75240 3a. Phone No. (include area code) Ph: 575-627-2439 Ext: 2439

4. Location of Well (Report location clearly and in accordance with Federal requirements)\*  
At surface Lot 2 260FNL 1725FEL 32.608681 N Lat, 103.596503 W Lon  
At top prod interval reported below NENE 225FNL 956FEL 32.608780 N Lat, 103.594008 W Lon  
At total depth SESE 89FSL 960FEL 32.595147 N Lat, 103.594119 W Lon

5. Lease Serial No. NMLC065607

6. If Indian, Allottee or Tribe Name

7. Unit or CA Agreement Name and No.

8. Lease Name and Well No. VERA RAE FEDERAL COM 134H

9. API Well No. 30-025-44342-00-S1

10. Field and Pool, or Exploratory TEAS - BONE SPRING EAST

11. Sec., T., R., M., or Block and Survey or Area Sec 6 T20S R34E Mer NMP

12. County or Parish LEA 13. State NM

14. Date Spudded 09/22/2018 15. Date T.D. Reached 11/18/2018 16. Date Completed ☐ D & A ☒ Ready to Prod. 01/17/2019

17. Elevations (DF, KB, RT, GL)\* 3620 GL

18. Total Depth: MD 15735 TVD 10884 19. Plug Back T.D.: MD 15633 TVD 20. Depth Bridge Plug Set: MD TVD

21. Type Electric & Other Mechanical Logs Run (Submit copy of each) OPENHOLELOGS

22. Was well cored? ☒ No ☐ Yes (Submit analysis)  
Was DST run? ☒ No ☐ Yes (Submit analysis)  
Directional Survey? ☐ No ☒ Yes (Submit analysis)

## 23. Casing and Liner Record (Report all strings set in well)

Hole Size	Size/Grade	Wt. (#/ft.)	Top (MD)	Bottom (MD)	Stage Cementer Depth	No. of Sks. & Type of Cement	Slurry Vol. (BBL)	Cement Top*	Amount Pulled
26.000	24.000 H40	94.0		149		450			
20.000	13.375 J55	54.5		1604		2355	695	0	
12.250	9.625 J55	40.0		5402	1659	2710	796	0	
8.750	5.500 P110	20.0		15723		2414	707	345	

## 24. Tubing Record

Size	Depth Set (MD)	Packer Depth (MD)	Size	Depth Set (MD)	Packer Depth (MD)	Size	Depth Set (MD)	Packer Depth (MD)
2.875	10230	10223						

## 25. Producing Intervals

Formation	Top	Bottom	Perforated Interval	Size	No. Holes	Perf. Status
A) BONE SPRING	10700	15586	10700 TO 15586	0.000	630	OPEN
B)						
C)						
D)						

## 26. Perforation Record

## 27. Acid, Fracture, Treatment, Cement Squeeze, Etc.

Depth Interval	Amount and Type of Material
10700 TO 15586	18816 GALLONS OF 15% HCL ACID, 1,377,936 GALLONS OF 15# CROSSLINK GEL, 6,580,602 GALLONS OF SLICK

## 28. Production - Interval A

Date First Produced	Test Date	Hours Tested	Test Production	Oil BBL	Gas MCF	Water BBL	Oil Gravity Corr. API	Gas Gravity	Production Method
01/18/2019	01/26/2019	24	→	1209.0	564.0	4897.0			FLows FROM WELL
Choke Size	Tbg. Press. Flwg. SI	Csg. Press.	24 Hr. Rate	Oil BBL	Gas MCF	Water BBL	Gas:Oil Ratio	Well Status	
42/64	SI	840.0	→	1209	564	4897		POW	

## 28a. Production - Interval B

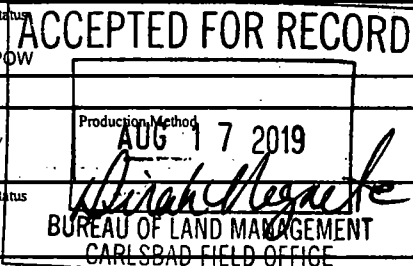
Date First Produced	Test Date	Hours Tested	Test Production	Oil BBL	Gas MCF	Water BBL	Oil Gravity Corr. API	Gas Gravity	Production Method
			→						
Choke Size	Tbg. Press. Flwg. SI	Csg. Press.	24 Hr. Rate	Oil BBL	Gas MCF	Water BBL	Gas:Oil Ratio	Well Status	
	SI		→						

(See Instructions and spaces for additional data on reverse side)

ELECTRONIC SUBMISSION #463440 VERIFIED BY THE BLM WELL INFORMATION SYSTEM

\*\* BLM REVISED \*\* BLM REVISED \*\* BLM REVISED \*\* BLM REVISED \*\* BLM REVISED \*\*

Reclamation Due: 7/17/2019



**28b. Production - Interval C**

Date First Produced	Test Date	Hours Tested	Test Production →	Oil BBL	Gas MCF	Water BBL	Oil Gravity Corr. API	Gas Gravity	Production Method
Choke Size	Tbg. Press. Flwg. SI	Csg. Press.	24 Hr. Rate →	Oil BBL	Gas MCF	Water BBL	Gas:Oil Ratio	Well Status	

**28c. Production - Interval D**

Date First Produced	Test Date	Hours Tested	Test Production →	Oil BBL	Gas MCF	Water BBL	Oil Gravity Corr. API	Gas Gravity	Production Method
Choke Size	Tbg. Press. Flwg. SI	Csg. Press.	24 Hr. Rate →	Oil BBL	Gas MCF	Water BBL	Gas:Oil Ratio	Well Status	

29. Disposition of Gas(Sold, used for fuel, vented, etc.)  
**SOLD**

**30. Summary of Porous Zones (Include Aquifers):**

Show all important zones of porosity and contents thereof: Cored intervals and all drill-stem tests, including depth interval tested, cushion used, time tool open, flowing and shut-in pressures and recoveries.

**31. Formation (Log) Markers**

Formation	Top	Bottom	Descriptions, Contents, etc.	Name	Top Meas. Depth
DELAWARE	5497	8349	OIL AND GAS	TOP OF SALT	1510
BONE SPRING 1ST	9443	9853	OIL AND GAS	BASE OF SALT	3220
BONE SPRING 2ND	9994	10552	OIL AND GAS	DELAWARE	5497
				BONE SPRING	8349

32. Additional remarks (include plugging procedure):  
As Drilled C102 attached  
Additional Points Sheet required by NMOCD

**33. Circle enclosed attachments:**

- |   |                    |               |                       |
|---|--------------------|---------------|-----------------------|
| 1. Electrical/Mechanical Logs (1 full set req'd.)     | 2. Geologic Report | 3. DST Report | 4. Directional Survey |
| 5. Sundry Notice for plugging and cement verification | 6. Core Analysis   | 7. Other:     |                       |

34. I hereby certify that the foregoing and attached information is complete and correct as determined from all available records (see attached instructions):

**Electronic Submission #463440 Verified by the BLM Well Information System.  
For MATADOR PRODUCTION COMPANY, sent to the Hobbs  
Committed to AFMSS for processing by DEBORAH HAM on 07/23/2019 (19DMH0160SE)**

Name (please print) RUSTY KLEIN

Title REGULATORY ANALYST

Signature (Electronic Submission)

Date 04/29/2019

Title 18 U.S.C. Section 1001 and Title 43 U.S.C. Section 1212, make it a crime for any person knowingly and willfully to make to any department or agency of the United States any false, fictitious or fraudulent statements or representations as to any matter within its jurisdiction.

**\*\* REVISED \*\* REVISED \*\* REVISED \*\* REVISED \*\* REVISED \*\* REVISED \*\* REVISED \*\***

District I  
1625 N. French Dr., Hobbs, NM 88240  
Phone: (575) 393-6161 Fax: (575) 393-0720  
District II  
811 S. First St., Artesia, NM 88210  
Phone: (575) 748-1283 Fax: (575) 748-9720  
District III  
1000 Rio Brazos Road, Aztec, NM 87410  
Phone: (505) 334-6178 Fax: (505) 334-6170  
District IV  
1220 S. St. Francis Dr., Santa Fe, NM 87505  
Phone: (505) 476-3460 Fax: (505) 476-3462

State of New Mexico  
Energy, Minerals & Natural Resources  
Department  
OIL CONSERVATION DIVISION  
1220 South St. Francis Dr.  
Santa Fe, NM 87505

FORM C-102  
Revised August 1, 2011  
Submit one copy to appropriate  
District Office

☒ AMENDED REPORT

WELL LOCATION AND ACREAGE DEDICATION PLAT

*As Drilled*

<sup>1</sup> API Number <b>30-025-44342</b>	<sup>2</sup> Pool Code <b>96637</b>	<sup>3</sup> Pool Name <b>Lees; Bone Spring, East</b>
<sup>4</sup> Property Code <b>320548</b>	<sup>5</sup> Property Name <b>VERNA RAE FED COM</b>	<sup>6</sup> Well Number <b>134H</b>
<sup>7</sup> GRID No. <b>228937</b>	<sup>8</sup> Operator Name <b>MATADOR PRODUCTION COMPANY</b>	<sup>9</sup> Elevation <b>3620'</b>

<sup>10</sup>Surface Location

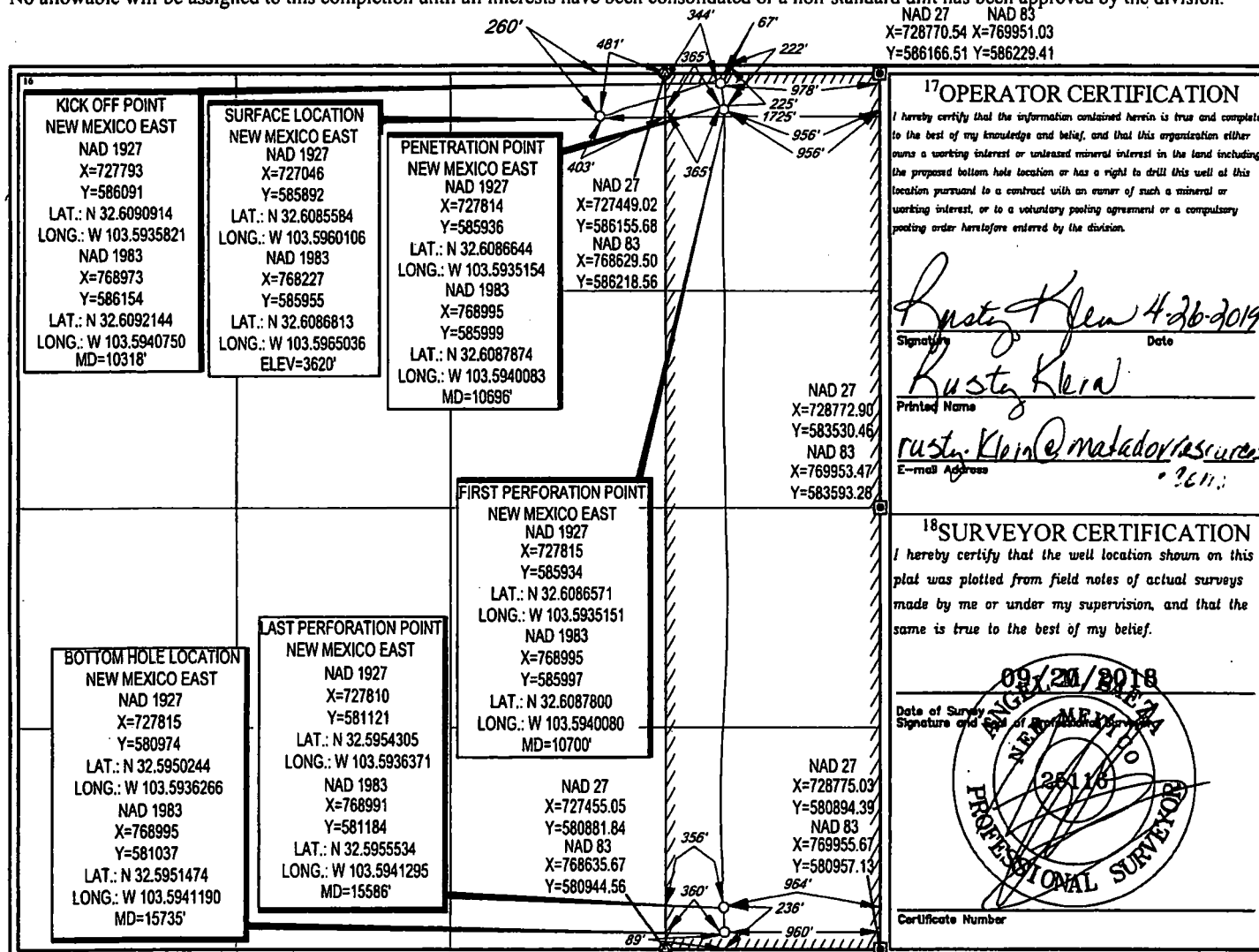
or lot no. <b>B 2</b>	Section <b>6</b>	Township <b>20-S</b>	Range <b>34-E</b>	Lot Idn <b>-</b>	Feet from the <b>260'</b>	North/South line <b>NORTH</b>	Feet from the <b>1725'</b>	East/West line <b>EAST</b>	County <b>LEA</b>
--------------------------	---------------------	-------------------------	----------------------	---------------------	------------------------------	----------------------------------	-------------------------------	-------------------------------	----------------------

<sup>11</sup>Bottom Hole Location If Different From Surface

UL or lot no. <b>P</b>	Section <b>6</b>	Township <b>20-S</b>	Range <b>34-E</b>	Lot Idn <b>-</b>	Feet from the <b>89'</b>	North/South line <b>SOUTH</b>	Feet from the <b>960'</b>	East/West line <b>EAST</b>	County <b>LEA</b>
---------------------------	---------------------	-------------------------	----------------------	---------------------	-----------------------------	----------------------------------	------------------------------	-------------------------------	----------------------

<sup>12</sup> Dedicated Acres <b>160</b>	<sup>13</sup> Joint or Infill	<sup>14</sup> Consolidation Code	<sup>15</sup> Order No.
---	-------------------------------	----------------------------------	-------------------------

No allowable will be assigned to this completion until all interests have been consolidated or a non-standard unit has been approved by the division.



NAD 27 NAD 83  
X=728770.54 X=769951.03  
Y=586166.51 Y=586229.41

<sup>17</sup>OPERATOR CERTIFICATION

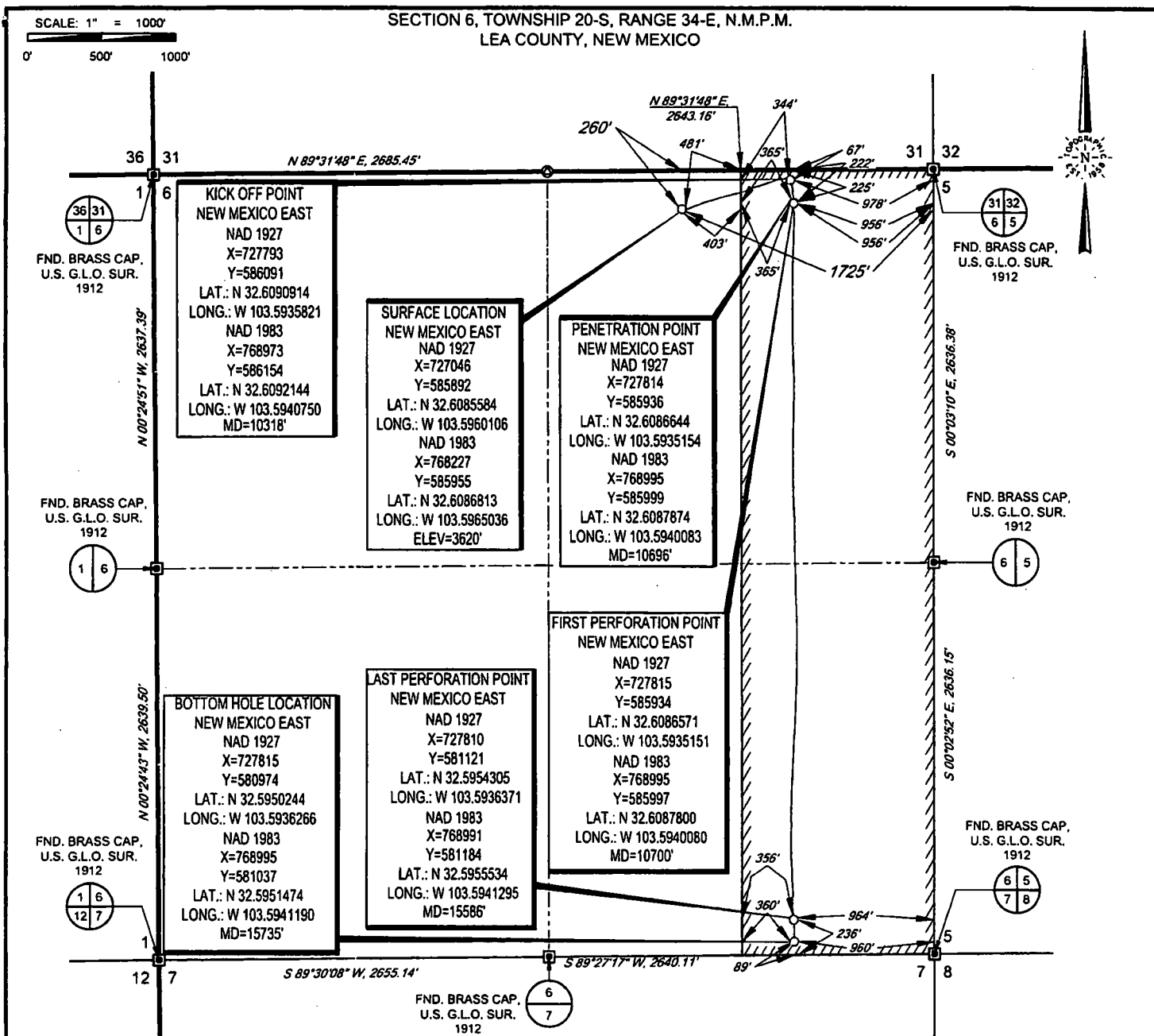
I hereby certify that the information contained herein is true and complete to the best of my knowledge and belief, and that this organization either owns a working interest or unleased mineral interest in the land including the proposed bottom hole location or has a right to drill this well at this location pursuant to a contract with an owner of such a mineral or working interest, or to a voluntary pooling agreement or a compulsory pooling order heretofore entered by the division.

*Rusty Klein* 4-26-2019  
Signature Date  
*Rusty Klein*  
Printed Name  
*rusty.klein@matadorresources.com*  
E-mail Address

<sup>18</sup>SURVEYOR CERTIFICATION

I hereby certify that the well location shown on this plat was plotted from field notes of actual surveys made by me or under my supervision, and that the same is true to the best of my belief.

09/20/2018  
Date of Survey  
Signature and Seal of Registered Surveyor  
*Rusty Klein*  
Certificate Number



LEASE NAME & WELL NO.: VERNA RAE FED COM 134H  
SECTION 6 TWP 20-S RGE 34-E SURVEY N.M.P.M.  
COUNTY LEA STATE NM ELEVATION 3620'  
DESCRIPTION 260' FNL & 1725' FEL



**TOPOGRAPHIC**  
LOYALTY INNOVATION LEGACY

1400 EVERMAN PARKWAY, Ste. 146 • FT. WORTH, TEXAS 76140  
TELEPHONE: (817) 744-7512 • FAX (817) 744-7554  
2903 NORTH BIG SPRING • MIDLAND, TEXAS 79705  
TELEPHONE: (432) 682-1653 OR (800) 787-1653 • FAX (432) 682-1743  
WWW.TOPOGRAPHIC.COM



Angel M. Baeza, P.S. No. 25116  
APRIL 24, 2019

VERNA RAE FED COM 134H AS-DRILLED	REVISION:		NOTES:
	INT	DATE	
DATE: 04/22/2019			1. ORIGINAL DOCUMENT SIZE: 8.5" X 11" 2. ALL BEARINGS, DISTANCES, AND COORDINATE VALUES CONTAINED HEREIN ARE GRID BASED UPON THE NEW MEXICO COORDINATE SYSTEM OF 1983, EAST ZONE, U.S. SURVEY FEET. 3. THIS WELL LOCATION SHOWN HEREON HAS BEEN SURVEYED ON THE GROUND UNDER MY SUPERVISION AND PREPARED ACCORDING TO THE EVIDENCE FOUND AT THE TIME OF SURVEY, AND DATA PROVIDED BY MATADOR PRODUCTION COMPANY. THIS CERTIFICATION IS MADE AND LIMITED TO THOSE PERSONS OR ENTITIES SHOWN ON THE FACE OF THIS PLAT AND IS NON-TRANSFERABLE. THIS SURVEY IS CERTIFIED FOR THIS TRANSACTION ONLY.
FILE:AD_VERNA_RAE_FED_COM_134H			
DRAWN BY: TRG			
SHEET: 1 OF 1			