

UNITED STATES
DEPARTMENT OF THE INTERIOR
BUREAU OF LAND MANAGEMENT

FORM APPROVED
OMB No. 1004-0137
Expires: July 31, 2010

WELL COMPLETION OR RECOMPLETION REPORT AND LOG

1a. Type of Well ☒ Oil Well ☐ Gas Well ☐ Dry ☐ Other
b. Type of Completion ☒ New Well ☐ Work Over ☐ Deepen ☐ Plug Back ☐ Diff. Resvr.
Other _____

2. Name of Operator AMEREDEV OPERATING LLC Contact: CHRISTIE HANNA
E-Mail: CHANNA@AMEREDEV.COM

3. Address 5707 SOUTHWEST PARKWAY BLDG 1 STE 275
AUSTIN, TX 78735

3a. Phone No. (include area code)
Ph: 7373004723

4. Location of Well (Report location clearly and in accordance with Federal requirements)*
Sec 31 T25S R36E Mer NMP
At surface SWSE 200FSL 2350FEL 32.080128 N Lat, 103.303261 W Lon
Sec 6 T26S R36E Mer NMP
At top prod interval reported below NWNE 124FNL 2383FEL
Sec 7 T26S R36E Mer NMP
At total depth SWSE 51FSL 2292FEL

5. Lease Serial No.
NMNM137471

6. If Indian, Allottee or Tribe Name

7. Unit or CA Agreement Name and No.
NMNM139206

8. Lease Name and Well No.
GOLDEN BELL FED COM 26 36 06 115H

9. API Well No.
30-025-45311-00-S1

10. Field and Pool, or Exploratory
WC-025 G09 S263619C-WOLFCAMP

11. Sec., T., R., M., or Block and Survey
or Area Sec 31 T25S R36E Mer NMP

12. County or Parish
LEA

13. State
NM

14. Date Spudded
11/11/2018

15. Date T.D. Reached
02/18/2019

16. Date Completed
☐ D & A ☐ Ready to Prod.
05/23/2019

17. Elevations (DF, KB, RT, GL)*
3014 GL

18. Total Depth: MD 22612
TVD 12099

19. Plug Back T.D.: MD 22612
TVD 12099

20. Depth Bridge Plug Set: MD 22612
TVD 12099

21. Type Electric & Other Mechanical Logs Run (Submit copy of each)
GR

22. Was well cored? ☒ No ☐ Yes (Submit analysis)
Was DST run? ☒ No ☐ Yes (Submit analysis)
Directional Survey? ☐ No ☒ Yes (Submit analysis)

23. Casing and Liner Record (Report all strings set in well)

Hole Size	Size/Grade	Wt. (#/ft.)	Top (MD)	Bottom (MD)	Stage Cementer Depth	No. of Sk. & Type of Cement	Slurry Vol. (BBL)	Cement Top*	Amount Pulled
17.500	13.375	54.5	0	1208		1020		0	
12.250	9.625	40.0	0	5070		1550		0	
8.750	7.625	29.7	0	10667		500			
6.750	5.500	20.0	0	22612		1540			

24. Tubing Record

Size	Depth Set (MD)	Packer Depth (MD)	Size	Depth Set (MD)	Packer Depth (MD)	Size	Depth Set (MD)	Packer Depth (MD)
2.875	11385	11385						

25. Producing Intervals

26. Perforation Record

Formation	Top	Bottom	Perforated Interval	Size	No. Holes	Perf. Status
A) WOLFCAMP	11896	12099	12200 TO 22561	3.000	5332	OPEN
B)						
C)						
D)						

27. Acid, Fracture, Treatment, Cement Squeeze, Etc.

Depth Interval	Amount and Type of Material
12200 TO 22561	30,604,630 GAL FLUID AND 32,891,580 LBS PROP

28. Production - Interval A

Date First Produced	Test Date	Hours Tested	Test Production	Oil BBL	Gas MCF	Water BBL	Oil Gravity Corr. API	Gas Gravity	Production Method
05/25/2019	06/12/2019	24	→	1975.0	1764.0	3533.0			FLows FROM WELL
Choke Size	Tbg. Press. Flwg. SI	Csg. Press.	24 Hr. Rate	Oil BBL	Gas MCF	Water BBL	Gas:Oil Ratio	Well Status	
64	350	725.0	→	1975	1764	3533			

28a. Production - Interval B

Date First Produced	Test Date	Hours Tested	Test Production	Oil BBL	Gas MCF	Water BBL	Oil Gravity Corr. API	Gas Gravity	Production Method
			→						
Choke Size	Tbg. Press. Flwg. SI	Csg. Press.	24 Hr. Rate	Oil BBL	Gas MCF	Water BBL	Gas:Oil Ratio	Well Status	
			→						

ACCEPTED FOR RECORD
JUL 25 2019
BUREAU OF LAND MANAGEMENT
CARLSBAD FIELD OFFICE

(See Instructions and spaces for additional data on reverse side)

ELECTRONIC SUBMISSION #474128 VERIFIED BY THE BLM WELL INFORMATION SYSTEM

** BLM REVISED ** BLM REVISED ** BLM REVISED ** BLM REVISED ** BLM REVISED **

Reclamation Due: 11/23/2019

28b. Production - Interval C

Date First Produced	Test Date	Hours Tested	Test Production	Oil BBL	Gas MCF	Water BBL	Oil Gravity Corr. API	Gas Gravity	Production Method
			→						
Choke Size	Tbg. Press. Flwg. SI	Csg. Press.	24 Hr. Rate	Oil BBL	Gas MCF	Water BBL	Gas:Oil Ratio	Well Status	
			→						

28c. Production - Interval D

Date First Produced	Test Date	Hours Tested	Test Production	Oil BBL	Gas MCF	Water BBL	Oil Gravity Corr. API	Gas Gravity	Production Method
			→						
Choke Size	Tbg. Press. Flwg. SI	Csg. Press.	24 Hr. Rate	Oil BBL	Gas MCF	Water BBL	Gas:Oil Ratio	Well Status	
			→						

29. Disposition of Gas(Sold, used for fuel, vented, etc.)
SOLD

30. Summary of Porous Zones (Include Aquifers):

Show all important zones of porosity and contents thereof: Cored intervals and all drill-stem tests, including depth interval tested, cushion used, time tool open, flowing and shut-in pressures and recoveries.

31. Formation (Log) Markers

Formation	Top	Bottom	Descriptions, Contents, etc.	Name	Top Meas. Depth
ANHYDRITE TANSILL BONE SPRING WOLFCAMP	1206 1402 8402 11719	3345			

32. Additional remarks (include plugging procedure):

33. Circle enclosed attachments:

- | | | | |
|---|--------------------|---------------|-----------------------|
| 1. Electrical/Mechanical Logs (1 full set req'd.) | 2. Geologic Report | 3. DST Report | 4. Directional Survey |
| 5. Sundry Notice for plugging and cement verification | 6. Core Analysis | 7. Other: | |

34. I hereby certify that the foregoing and attached information is complete and correct as determined from all available records (see attached instructions):

Electronic Submission #474128 Verified by the BLM Well Information System.
For AMEREDEV OPERATING LLC, sent to the Hobbs
Committed to AFMSS for processing by DINAH NEGRETE on 07/25/2019 (19DCN0174SE)

Name (please print) ZACHARY BOYDTitle OPERATIONS SUPERINTENDENT

Signature _____ (Electronic Submission)

Date 07/18/2019

Title 18 U.S.C. Section 1001 and Title 43 U.S.C. Section 1212, make it a crime for any person knowingly and willfully to make to any department or agency of the United States any false, fictitious or fraudulent statements or representations as to any matter within its jurisdiction.

**** REVISED ** REVISED ** REVISED ** REVISED ** REVISED ** REVISED ** REVISED ****

District I
1625 N. French Dr., Hobbs, NM 88240
Phone: (575) 393-6161 Fax: (575) 393-0720
District II
811 S. First St., Artesia, NM 88210
Phone: (575) 748-1283 Fax: (575) 748-9720
District III
1000 Rio Brazos Road, Aztec, NM 87410
Phone: (505) 334-6178 Fax: (505) 334-6170
District IV
1220 S. St. Francis Dr., Santa Fe, NM 87505
Phone: (505) 476-3460 Fax: (505) 476-3462

State of New Mexico
Energy, Minerals & Natural Resources
Department
OIL CONSERVATION DIVISION
1220 South St. Francis Dr.
Santa Fe, NM 87505

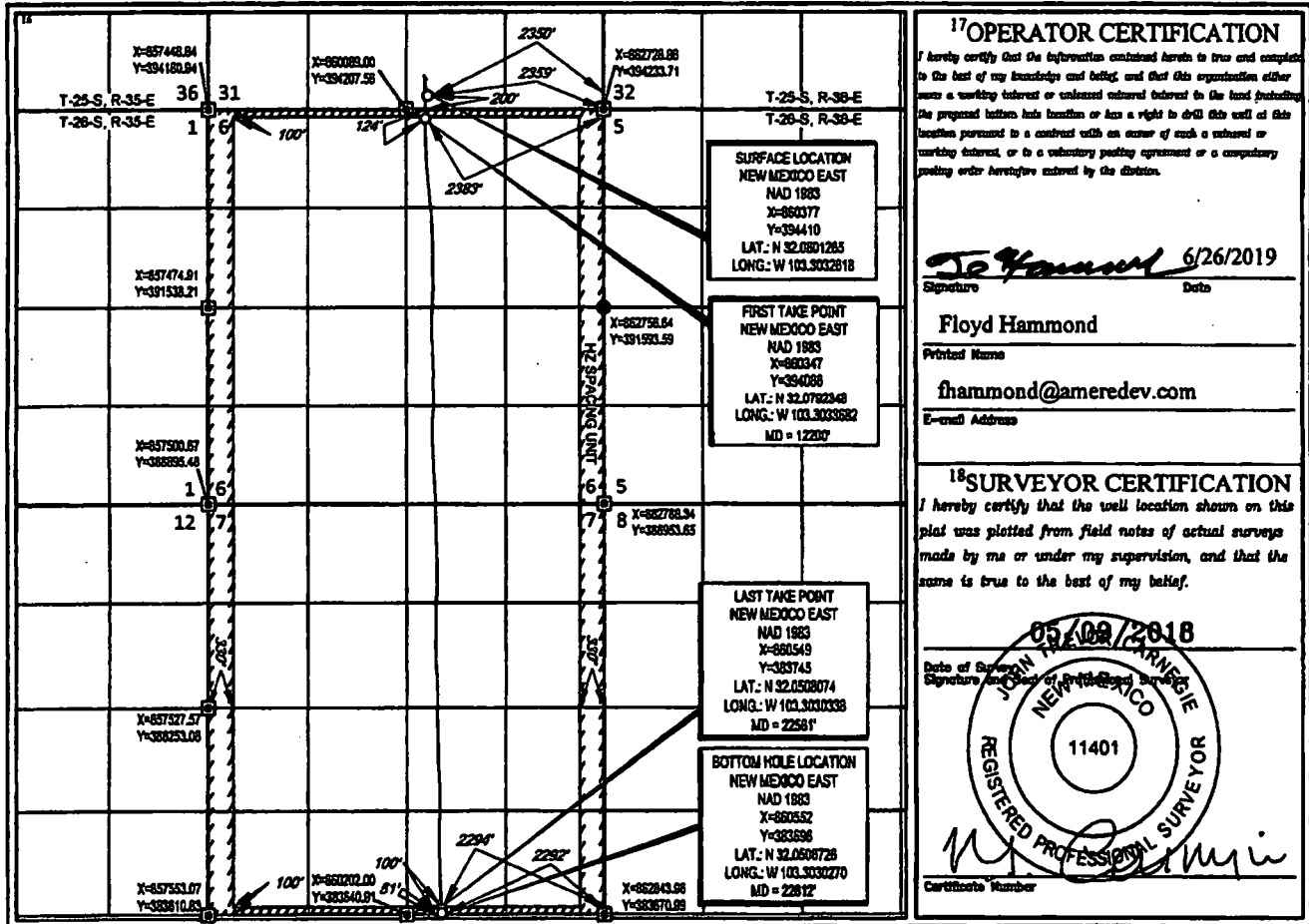
HOBBS OCD
JUL 08 2019
RECEIVED

FORM C-102
Revised August 1, 2011
Submit one copy to appropriate
District Office
☐ AMENDED REPORT

WELL LOCATION AND ACREAGE DEDICATION PLAT

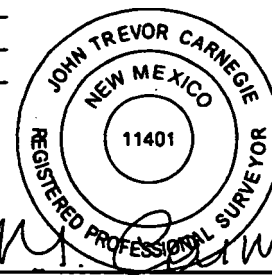
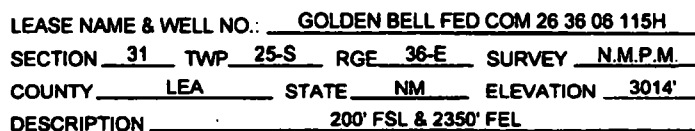
API Number 30-025-45311		Pool Code 98234		Pool Name WC-025 G-09 263619C; WOLFCAMP	
Property Code 322777		Property Name GOLDEN BELL FED COM 26 36 06			Well Number 115H
OGRID No. 372224		Operator Name AMEREDEV OPERATING, LLC			Elevation 3014'
10 Surface Location					
UL or lot no. 0	Section 31	Township 25-S	Range 36-E	Lot Id -	Feet from the 200'
		North/South line SOUTH		Feet from the 2350'	East/West line EAST
				County LEA	
11 Bottom Hole Location If Different From Surface					
UL or lot no. 0	Section 7	Township 26-S	Range 36-E	Lot Id -	Feet from the 51'
		North/South line SOUTH		Feet from the 2292'	East/West line EAST
				County LEA	
Dedicated Acres 320		Joint or Infill		Consolidation Code C	Order No.

No allowable will be assigned to this completion until all interests have been consolidated or a non-standard unit has been approved by the division.



B:\SURVEY\AMEREDEV OPERATING, LLC\GOLDEN BELL FED COM\FINAL PRODUCTS\NAD GOLDEN BELL FED COM 26 36 06 115H.DWG 6/23/2019 10:33:55 AM created

~~MAY 29 2019~~



John Carnegie, P.S. No. 11401
MAY 22, 2019



TOPOGRAPHIC
LOYALTY INNOVATION LEGACY

1400 EVERMAN PARKWAY, Ste. 148 • FT. WORTH, TEXAS 76140
TELEPHONE: (817) 744-7512 • FAX (817) 744-7554
TEXAS FIRM REGISTRATION NO. 10042504
WWW.TOPOGRAPHIC.COM

GOLDEN BELL FED COM 26 36 06 115H AS-COMPLETED	REVISION:	
DATE: 05/22/19		
FILE:AD_GOLDEN_BELL_FED_COM_26_36_06_115H		
DRAWN BY: TRG		
SHEET: 1 OF 1		

NOTES:

1. ORIGINAL DOCUMENT SIZE: 8.5" X 11"
2. ALL BEARINGS, DISTANCES, AND COORDINATE VALUES CONTAINED HEREIN ARE GRID BASED UPON THE NEW MEXICO COORDINATE SYSTEM, EAST ZONE, U.S. SURVEY FEET, NORTH AMERICAN DATUM 1983.
3. THIS WELL LOCATION SHOWN HEREON HAS BEEN SURVEYED ON THE GROUND UNDER MY SUPERVISION AND PREPARED ACCORDING TO THE EVIDENCE FOUND AT THE TIME OF SURVEY, AND DATA PROVIDED BY AMEREDGE OPERATING, LLC. THIS CERTIFICATION IS MADE AND LIMITED TO THOSE PERSONS OR ENTITIES SHOWN ON THE FACE OF THIS PLAT AND IS NON-TRANSFERABLE. THIS SURVEY IS CERTIFIED FOR THIS TRANSACTION ONLY.