

District I  
1625 N. French Dr., Hobbs, NM 88240  
Phone: (575) 393-6161 Fax: (575) 393-0720  
District II  
811 S. First St., Artesia, NM 88210  
Phone: (575) 748-1283 Fax: (575) 748-9720  
District III  
1000 Rio Brazos Road, Aztec, NM 87410  
Phone: (505) 334-6178 Fax: (505) 334-6170  
District IV  
1220 S. St. Francis Dr., Santa Fe, NM 87505  
Phone: (505) 476-3460 Fax: (505) 476-3462

State of New Mexico  
Energy, Minerals & Natural Resources Department  
OIL CONSERVATION DIVISION  
1220 South St. Francis Dr.  
Santa Fe, NM 87505

Form C-102  
Revised August 1, 2011  
Submit one copy to appropriate  
District Office  
☐ AMENDED REPORT

RECEIVED  
AUG 29 2019  
HOBBS OCD

WELL LOCATION AND ACREAGE DEDICATION PLAT

<sup>1</sup> API Number <b>30-025-45394</b>	<sup>2</sup> Pool Code <b>7320</b>	<sup>3</sup> Pool Name <b>BRINNINSTOOL;BONE SPRING</b>
<sup>4</sup> Property Code	<sup>5</sup> Property Name <b>NORTH THISTLE 15-10 STATE COM</b>	<sup>6</sup> Well Number <b>3H</b>
<sup>7</sup> OGRID No. <b>6137</b>	<sup>8</sup> Operator Name <b>DEVON ENERGY PRODUCTION COMPANY, L.P.</b>	<sup>9</sup> Elevation <b>3717.9</b>

<sup>10</sup> Surface Location

UL or lot no.	Section	Township	Range	Lot Idn	Feet from the	North/South line	Feet from the	East/West line	County
<b>N</b>	<b>15</b>	<b>23 S</b>	<b>33 E</b>		<b>475</b>	<b>SOUTH</b>	<b>2615</b>	<b>WEST</b>	<b>LEA</b>

<sup>11</sup> Bottom Hole Location If Different From Surface

UL or lot no.	Section	Township	Range	Lot Idn	Feet from the	North/South line	Feet from the	East/West line	County
<b>C</b>	<b>10</b>	<b>23 S</b>	<b>33 E</b>		<b>20</b>	<b>NORTH</b>	<b>2188</b>	<b>WEST</b>	<b>LEA</b>

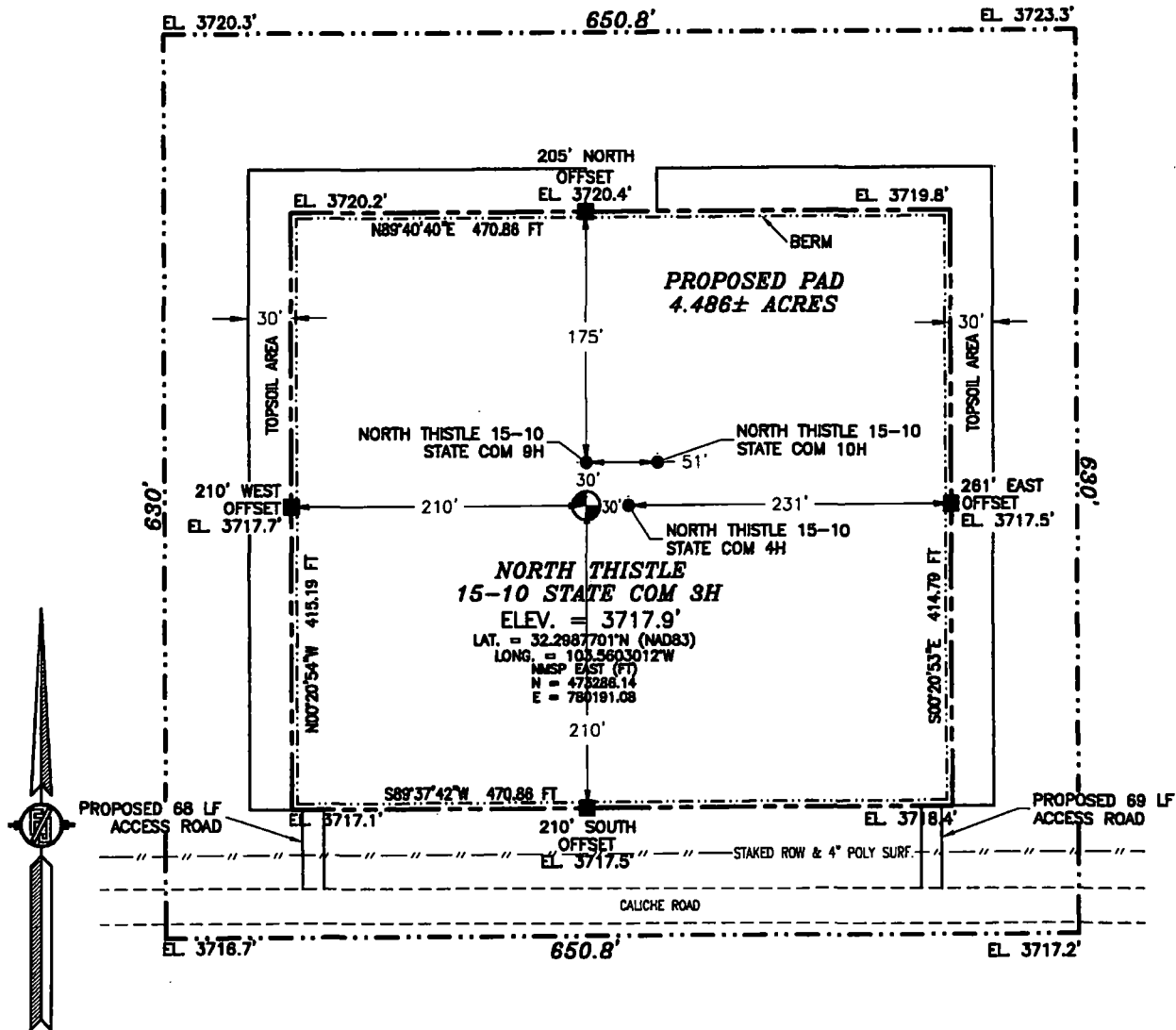
<sup>12</sup> Dedicated Acres <b>640</b>	<sup>13</sup> Joint or Infill	<sup>14</sup> Consolidation Code	<sup>15</sup> Order No.
---	-------------------------------	----------------------------------	-------------------------

No allowable will be assigned to this completion until all interests have been consolidated or a non-standard unit has been approved by the division.

<p><b>NOTE:</b> LATITUDE AND LONGITUDE COORDINATES ARE SHOWN USING THE NORTH AMERICAN DATUM OF 1983 (NAD83). LISTED NEW MEXICO STATE PLANS EAST COORDINATES ARE GRID (NAD83). BASIS OF BEARING AND DISTANCES USED ARE NEW MEXICO STATE PLANE EAST COORDINATES MODIFIED TO THE SURFACE. ELEVATION VALUES ARE NAVD88.</p>	<p><b><sup>16</sup> OPERATOR CERTIFICATION</b></p> <p>I hereby certify that the information contained herein is true and complete to the best of my knowledge and belief, and that this organization either owns a working interest or undivided mineral interest in the land including the proposed bottom hole location or has a right to drill this well at this location pursuant to a contract with an owner of such a mineral or working interest, or to a voluntary pooling agreement or a compulsory pooling order heretofore entered by the division.</p> <p><u>Rebecca Deal</u> 12/18/2018 Signature Date</p> <p><b>Rebecca Deal, Regulatory Analyst</b> Printed Name</p> <p><u>rebecca.deal@dvn.com</u> E-mail Address</p> <p><b><sup>17</sup> SURVEYOR CERTIFICATION</b></p> <p>I hereby certify that the well location shown on this plat was plotted from field notes of actual surveys made by me or under my supervision, and that the same is true and correct to the best of my belief.</p> <p>NOVEMBER 1, 2018 Date of Survey</p> <p><u>[Signature]</u> Signature and Seal of Professional Surveyor</p> <p>Certificate Number: <u>71797</u> SURVEY NO. 4771A</p>
---	---

**SECTION 15, TOWNSHIP 23 SOUTH, RANGE 33 EAST, N.M.P.M.  
LEA COUNTY, STATE OF NEW MEXICO  
SITE MAP**

NOTE: LATITUDE AND LONGITUDE COORDINATES ARE SHOWN USING THE NORTH AMERICAN DATUM OF 1983 (NAD83). LISTED NEW MEXICO STATE PLANE EAST COORDINATES ARE GRID (NAD83). BASIS OF BEARING AND DISTANCES USED ARE NEW MEXICO STATE PLANE EAST COORDINATES MODIFIED TO THE SURFACE. ELEVATION VALUES ARE NAVD88.



012 60 120 240

SCALE 1" = 120'

DIRECTIONS TO LOCATION

FROM STATE HIGHWAY 128 AND CR 21 (DELAWARE BASIN) GO NORTH ON CR 21 8.0 MILES, TURN LEFT ON CALICHE ROAD AND GO WEST 2.6 MILES TO A PROPOSED ROAD SURVEY AND FOLLOW FLAGS NORTH 68' TO THE SOUTHEAST PAD CORNER FOR THIS LOCATION.

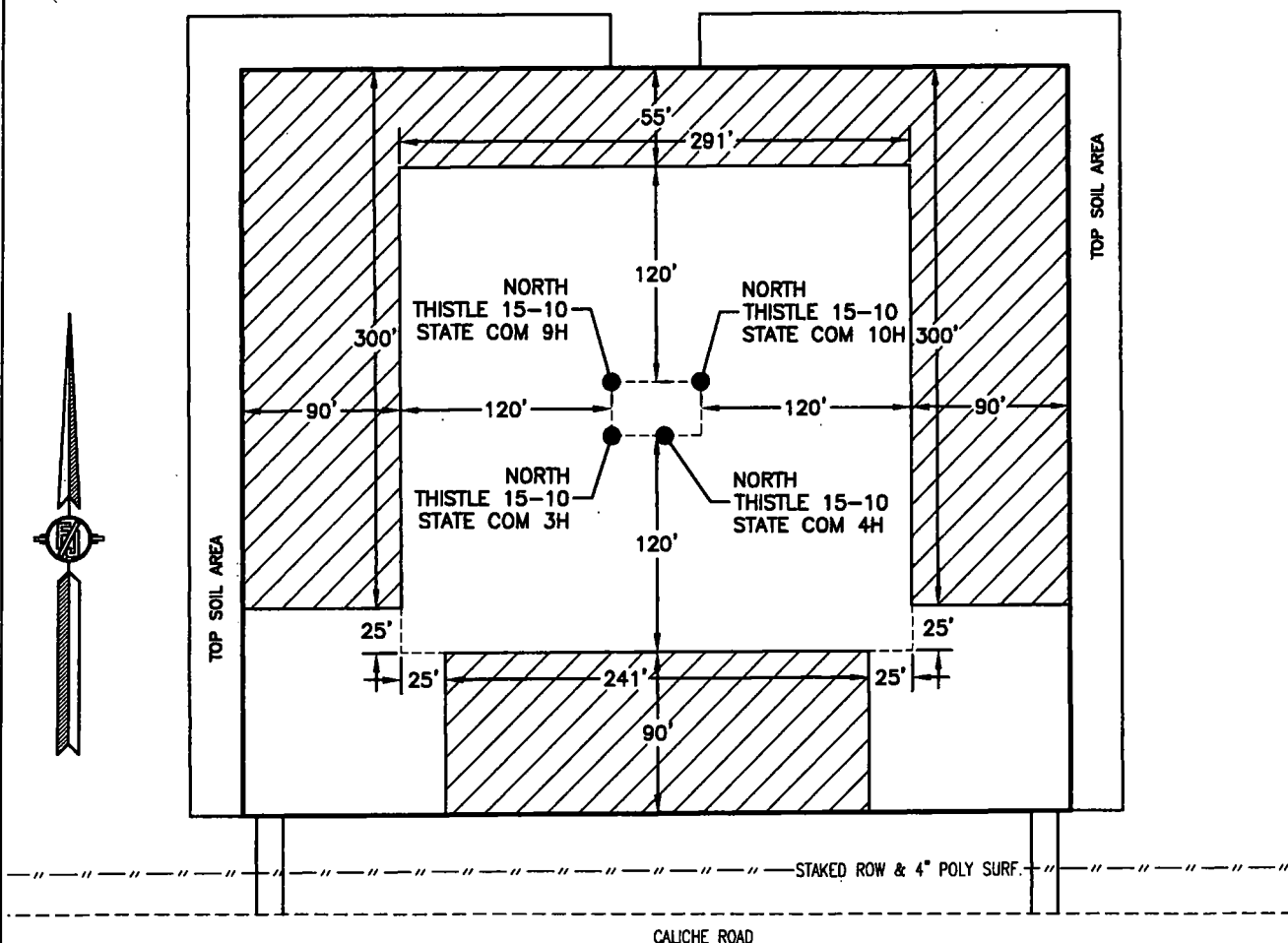
**DEVON ENERGY PRODUCTION COMPANY, L.P.  
NORTH THISTLE 15-10 STATE COM 3H  
LOCATED 475 FT. FROM THE SOUTH LINE  
AND 2615 FT. FROM THE WEST LINE OF  
SECTION 15, TOWNSHIP 23 SOUTH,  
RANGE 33 EAST, N.M.P.M.  
LEA COUNTY, STATE OF NEW MEXICO**

NOVEMBER 7, 2018

SURVEY NO. 4771A

**MADRON SURVEYING, INC.** 301 SOUTH CANAL (575) 234-3341 **CARLSBAD, NEW MEXICO**

**SECTION 15, TOWNSHIP 23 SOUTH, RANGE 33 EAST, N.M.P.M.  
LEA COUNTY, STATE OF NEW MEXICO  
INTERIM SITE RECLAMATION**



 DENOTES  
RECLAMATION AREA  
2.105± ACRES RECLAMATION AREA

010 50 100 200  
SCALE 1" = 100'

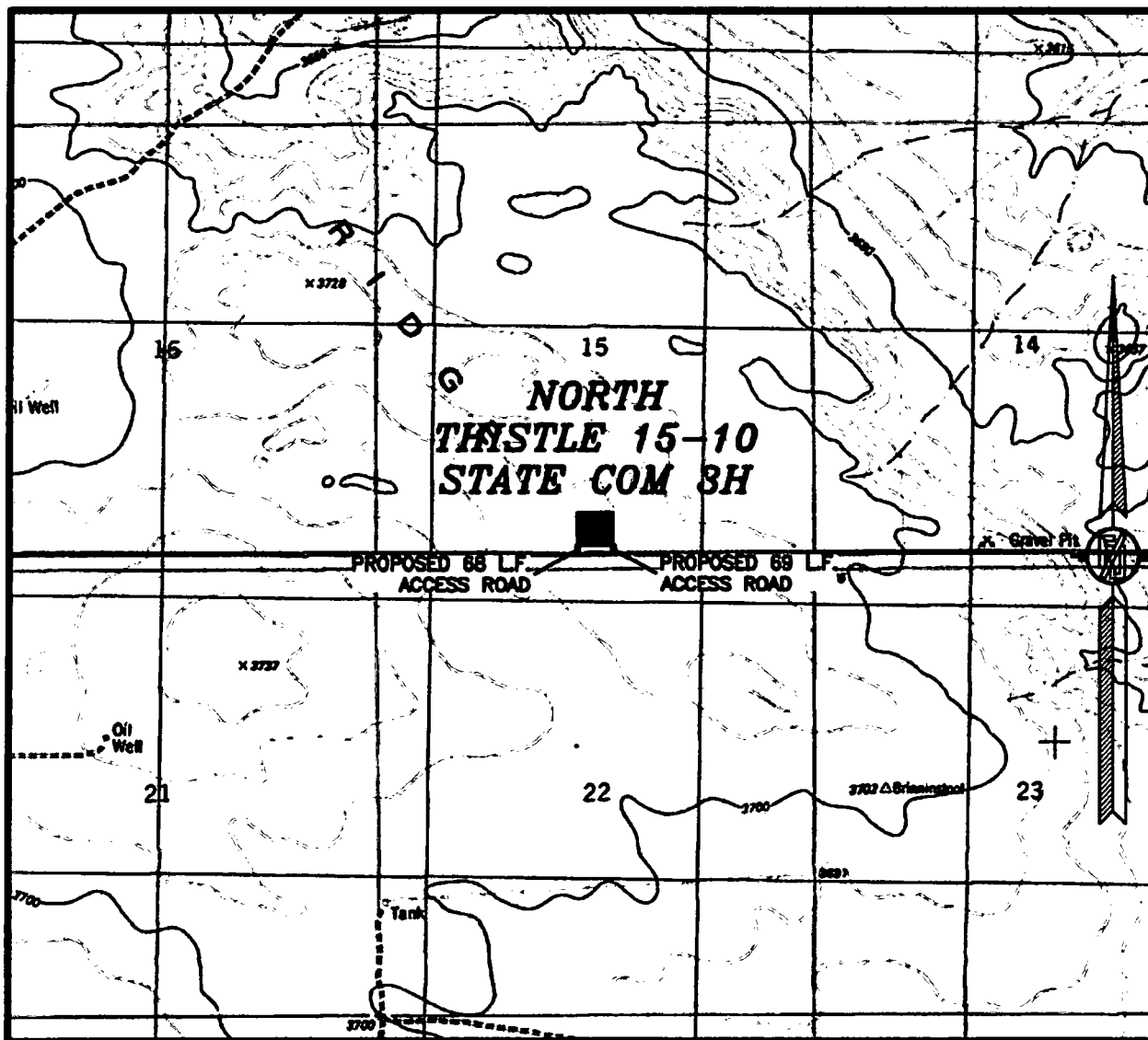
**DEVON ENERGY PRODUCTION COMPANY, L.P.  
NORTH THISTLE 15-10 STATE COM 3H  
LOCATED 475 FT. FROM THE SOUTH LINE  
AND 2615 FT. FROM THE WEST LINE OF  
SECTION 15, TOWNSHIP 23 SOUTH,  
RANGE 33 EAST, N.M.P.M.  
LEA COUNTY, STATE OF NEW MEXICO**

**NOVEMBER 7, 2018**

**SURVEY NO. 4771A**

**MADRON SURVEYING, INC.** 301 SOUTH CANAL (575) 234-3341 **CARLSBAD, NEW MEXICO**

**SECTION 15, TOWNSHIP 23 SOUTH, RANGE 33 EAST, N.M.P.M.  
LEA COUNTY, STATE OF NEW MEXICO  
LOCATION VERIFICATION MAP**



USGS QUAD MAP:  
TIP TOP WELLS

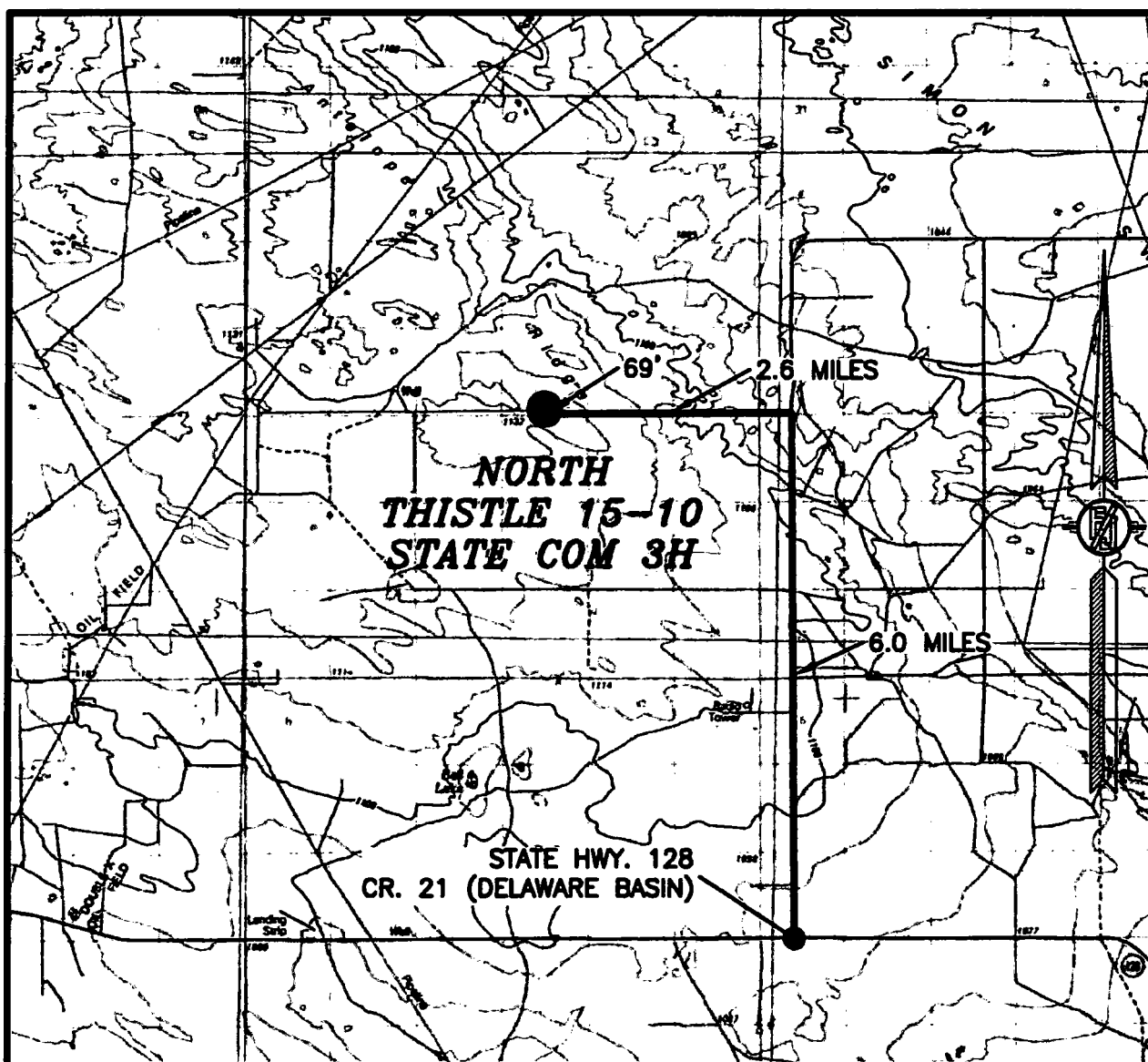
NOT TO SCALE

**DEVON ENERGY PRODUCTION COMPANY, L.P.  
NORTH THISTLE 15-10 STATE COM 3H  
LOCATED 475 FT. FROM THE SOUTH LINE  
AND 2615 FT. FROM THE WEST LINE OF  
SECTION 15, TOWNSHIP 23 SOUTH,  
RANGE 33 EAST, N.M.P.M.  
LEA COUNTY, STATE OF NEW MEXICO**

**NOVEMBER 7, 2018**

**MADRON SURVEYING, INC.** 301 SOUTH CANAL (575) 234-3341 **CARLSBAD, NEW MEXICO** **SURVEY NO. 4771A**

**SECTION 15, TOWNSHIP 23 SOUTH, RANGE 33 EAST, N.M.P.M.  
LEA COUNTY, STATE OF NEW MEXICO  
VICINITY MAP**



**DISTANCES IN MILES**

**NOT TO SCALE**

**DIRECTIONS TO LOCATION**

FROM STATE HIGHWAY 128 AND CR 21 (DELAWARE BASIN) GO NORTH ON CR 21 6.0 MILES, TURN LEFT ON CALICHE ROAD AND GO WEST 2.6 MILES TO A PROPOSED ROAD SURVEY AND FOLLOW FLAGS NORTH 69' TO THE SOUTHEAST PAD CORNER FOR THIS LOCATION.

**DEVON ENERGY PRODUCTION COMPANY, L.P.  
NORTH THISTLE 15-10 STATE COM 3H**

LOCATED 475 FT. FROM THE SOUTH LINE  
AND 2615 FT. FROM THE WEST LINE OF  
SECTION 15, TOWNSHIP 23 SOUTH,  
RANGE 33 EAST, N.M.P.M.  
LEA COUNTY, STATE OF NEW MEXICO

**NOVEMBER 7, 2018**

**SURVEY NO. 4771A**

**MADRON SURVEYING, INC. 301 SOUTH CANAL (575) 234-3341 CARLSBAD, NEW MEXICO**

**SECTION 15, TOWNSHIP 23 SOUTH, RANGE 33 EAST, N.M.P.M.  
LEA COUNTY, STATE OF NEW MEXICO  
AERIAL PHOTO**



NOT TO SCALE  
AERIAL PHOTO:  
GOOGLE EARTH  
NOV. 2017

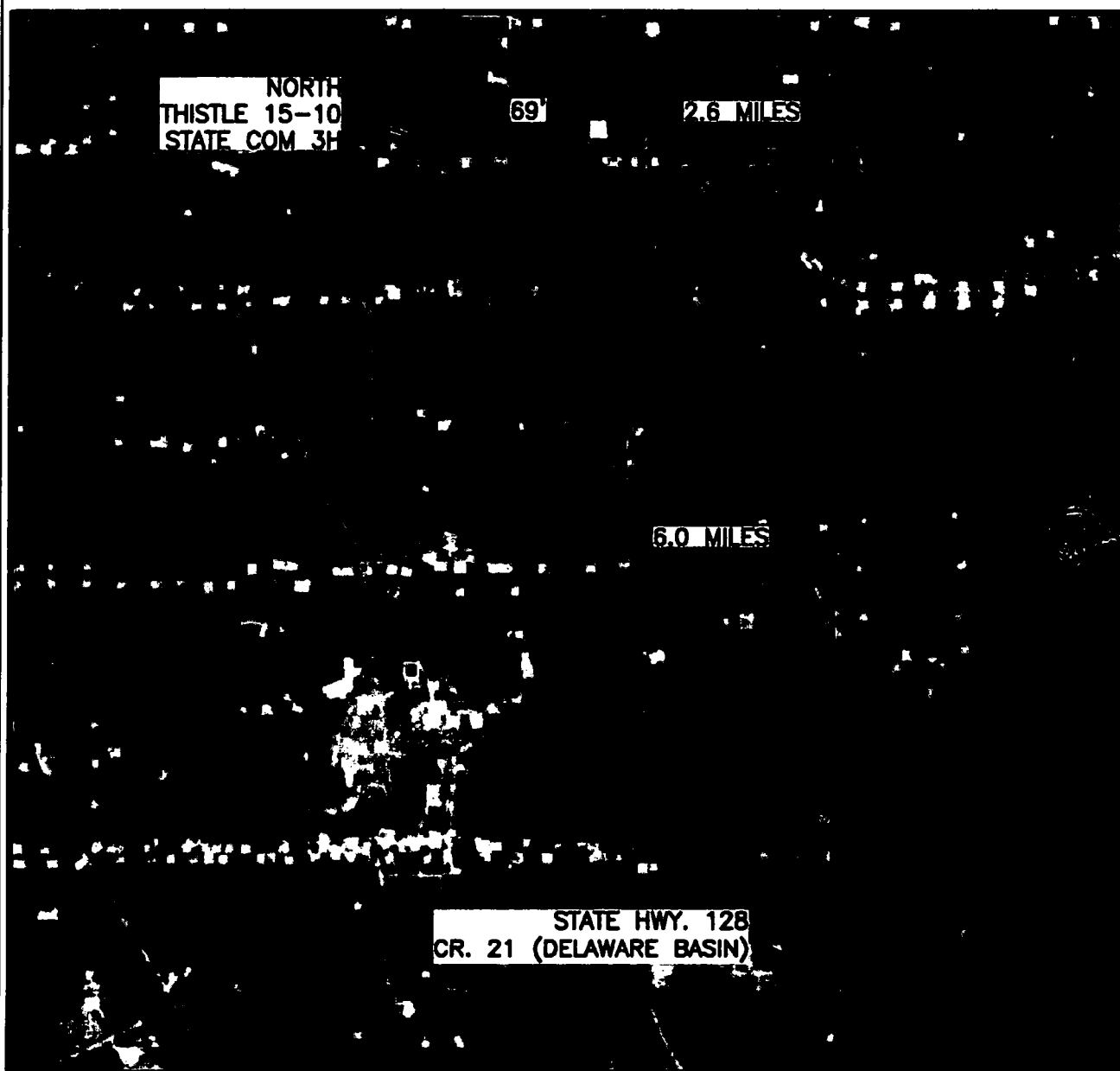
**DEVON ENERGY PRODUCTION COMPANY, L.P.  
NORTH THISTLE 15-10 STATE COM 3H  
LOCATED 475 FT. FROM THE SOUTH LINE  
AND 2615 FT. FROM THE WEST LINE OF  
SECTION 15, TOWNSHIP 23 SOUTH,  
RANGE 33 EAST, N.M.P.M.  
LEA COUNTY, STATE OF NEW MEXICO**

**NOVEMBER 7, 2018**

**SURVEY NO. 4771A**

**MADRON SURVEYING, INC.** 301 SOUTH CANAL (575) 234-3341 **CARLSBAD, NEW MEXICO**

**SECTION 15, TOWNSHIP 23 SOUTH, RANGE 33 EAST, N.M.P.M.  
LEA COUNTY, STATE OF NEW MEXICO  
AERIAL ACCESS ROUTE MAP**



NOT TO SCALE  
AERIAL PHOTO:  
GOOGLE EARTH  
NOV. 2017

**DEVON ENERGY PRODUCTION COMPANY, L.P.  
NORTH THISTLE 15-10 STATE COM 3H  
LOCATED 475 FT. FROM THE SOUTH LINE  
AND 2615 FT. FROM THE WEST LINE OF  
SECTION 15, TOWNSHIP 23 SOUTH,  
RANGE 33 EAST, N.M.P.M.  
LEA COUNTY, STATE OF NEW MEXICO**

**NOVEMBER 7, 2018**

**SURVEY NO. 4771A**

**MADRON SURVEYING, INC. 301 SOUTH CANAL (575) 234-3341 CARLSBAD, NEW MEXICO**