

DISTRICT I
1625 N. French Dr., Hobbs, NM 88240
Phone (575) 393-6181 Fax: (575) 393-0720
DISTRICT II
811 S. First St., Artesia, NM 88210
Phone (575) 746-1283 Fax: (575) 746-0720
DISTRICT III
1000 Rio Brazos Rd., Aztec, NM 87410
Phone (505) 334-6178 Fax: (505) 334-6170
DISTRICT IV
1220 S. St. Francis Dr., Santa Fe, NM 87505
Phone (505) 476-3460 Fax: (505) 476-3462

State of New Mexico
Energy, Minerals and Natural Resources Department

Form C-102
Revised August 4, 2011
Submit one copy to appropriate
District Office

OIL CONSERVATION DIVISION
1220 South St. Francis Dr.
Santa Fe, New Mexico 87505

WELL LOCATION AND ACREAGE DEDICATION PLAT

□ AMENDED REPORT

API Number 30-025- 46532	Pool Code 98033	Pool Name WC-025 G-10 S2133280; Wolfcamp
Property Code 326484	Property Name Anderson Fed Com	Well Number 704H
GRID No. 372417	Operator Name Advance Energy Partners Hat Mesa, LLC	Elevation 3652'

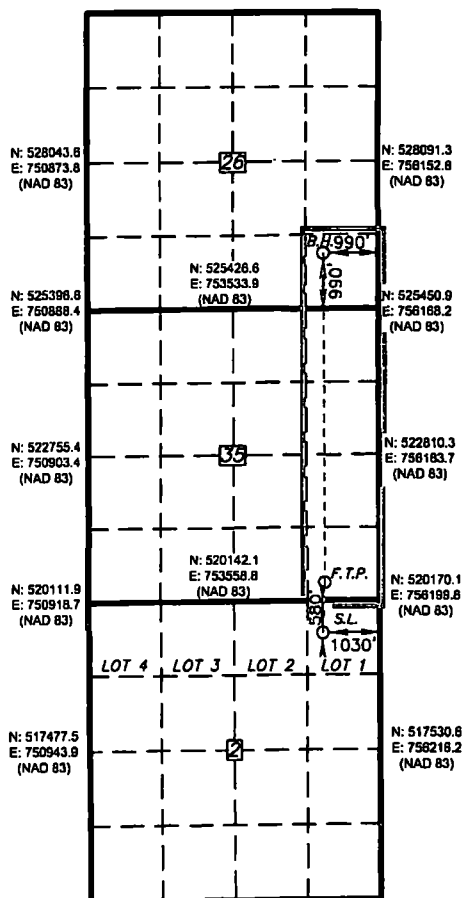
Surface Location

UL or lot No.	Section	Township	Range	Lot Idn	Feet from the	SOUTH/South line	Feet from the	East/West line	County
LOT 1	2	22 S	32 E		580	NORTH	1030	EAST	LEA

Bottom Hole Location If Different From Surface

UL or lot No.	Section	Township	Range	Lot Idn	Feet from the	SOUTH/South line	Feet from the	East/West line	County
P	26	21 S	32 E		990	SOUTH	990	EAST	LEA
Dedicated Acres 200.00	Joint or Infill	Consolidation Code C	Order No.						

NO ALLOWABLE WILL BE ASSIGNED TO THIS COMPLETION UNTIL ALL INTERESTS HAVE BEEN CONSOLIDATED
OR A NON-STANDARD UNIT HAS BEEN APPROVED BY THE DIVISION



PROPOSED BOTTOM
HOLE LOCATION/
LAST TAKE POINT
Lat - N 32.445319
Long - W 103.640153
NMSPC - N 526431.7
E 755172.5
(NAD-83)

FIRST TAKE POINT
330 FSL & 990 FEL
Lat - N 32.428986
Long - W 103.840164
NMSPC - N 520489.6
E 755207.8
(NAD-83)

SURFACE LOCATION
Lat - N 32.426483
Long - W 103.640293
NMSPC - N 519575.2
E 755173.8
(NAD-83)

OPERATOR CERTIFICATION

I hereby certify that the information contained herein is true and complete to the best of my knowledge and belief, and that this organization either owns a working interest or unleased mineral interest in the land including the proposed bottom hole location or has a right to drill this well at this location pursuant to a contract with an owner of such a mineral or working interest, or to a voluntary pooling agreement or a compulsory pooling order heretofore entered by the division.

Brian Wood 6-17-18
Signature Date
Printed Name
brian@permitswest.com
Email Address

SURVEYOR CERTIFICATION

I hereby certify that the well location shown on this plat was plotted from field notes of actual surveys made by me or under my supervision, and that the same is true and correct to the best of my belief.

FEBRUARY 9 2018
Date Surveyed
Signature & Seal of
Professional Surveyor
7977
Certificate No. 7977
Basic Surveyor

0' 1500' 3000' 4500' 6000'
SCALE: 1" = 3000'
WO Num.: 33515