

DISTRICT I  
1625 N. FRENCH DR., HOBBS, NM 88240  
Phone: (575) 393-8161 Fax: (575) 393-0720

DISTRICT II  
811 S. FIRST ST., ARTESIA, NM 88210  
Phone: (575) 748-1283 Fax: (575) 748-9720

DISTRICT III  
1000 RIO BRAZOS RD., AZTEC, NM 87410  
Phone: (505) 334-6178 Fax: (505) 334-6170

DISTRICT IV  
1220 S. ST. FRANCIS DR., SANTA FE, NM 87505  
Phone: (505) 476-3460 Fax: (505) 476-3462

State of New Mexico  
Energy, Minerals & Natural Resources Department  
**OIL CONSERVATION DIVISION**  
1220 SOUTH ST. FRANCIS DR.  
Santa Fe, New Mexico 87505

Form C-102  
Revised August 1, 2011  
Submit one copy to appropriate  
District Office

☒ AMENDED REPORT

**WELL LOCATION AND ACREAGE DEDICATION PLAT**

|                            |                                     |   |
|----------------------------|-------------------------------------|---|
| API Number<br>30-025-45279 | Pool Code<br>98098                  | Pool Name<br>WC-025 G-09 S243532M; WOLFBONE |
| Property Code<br>322742    | Property Name<br>FEZ FEDERAL COM    | Well Number<br>703H                         |
| OGRID No.<br>229137        | Operator Name<br>COG OPERATING, LLC | Elevation<br>3250.6'                        |

**Surface Location**

|                    |              |                  |               |         |                      |                           |                       |                        |               |
|--------------------|--------------|------------------|---------------|---------|----------------------|---------------------------|-----------------------|------------------------|---------------|
| UL or lot No.<br>M | Section<br>9 | Township<br>25-S | Range<br>35-E | Lot Idn | Feet from the<br>280 | North/South line<br>SOUTH | Feet from the<br>1085 | East/West line<br>WEST | County<br>LEA |
|--------------------|--------------|------------------|---------------|---------|----------------------|---------------------------|-----------------------|------------------------|---------------|

**Bottom Hole Location If Different From Surface**

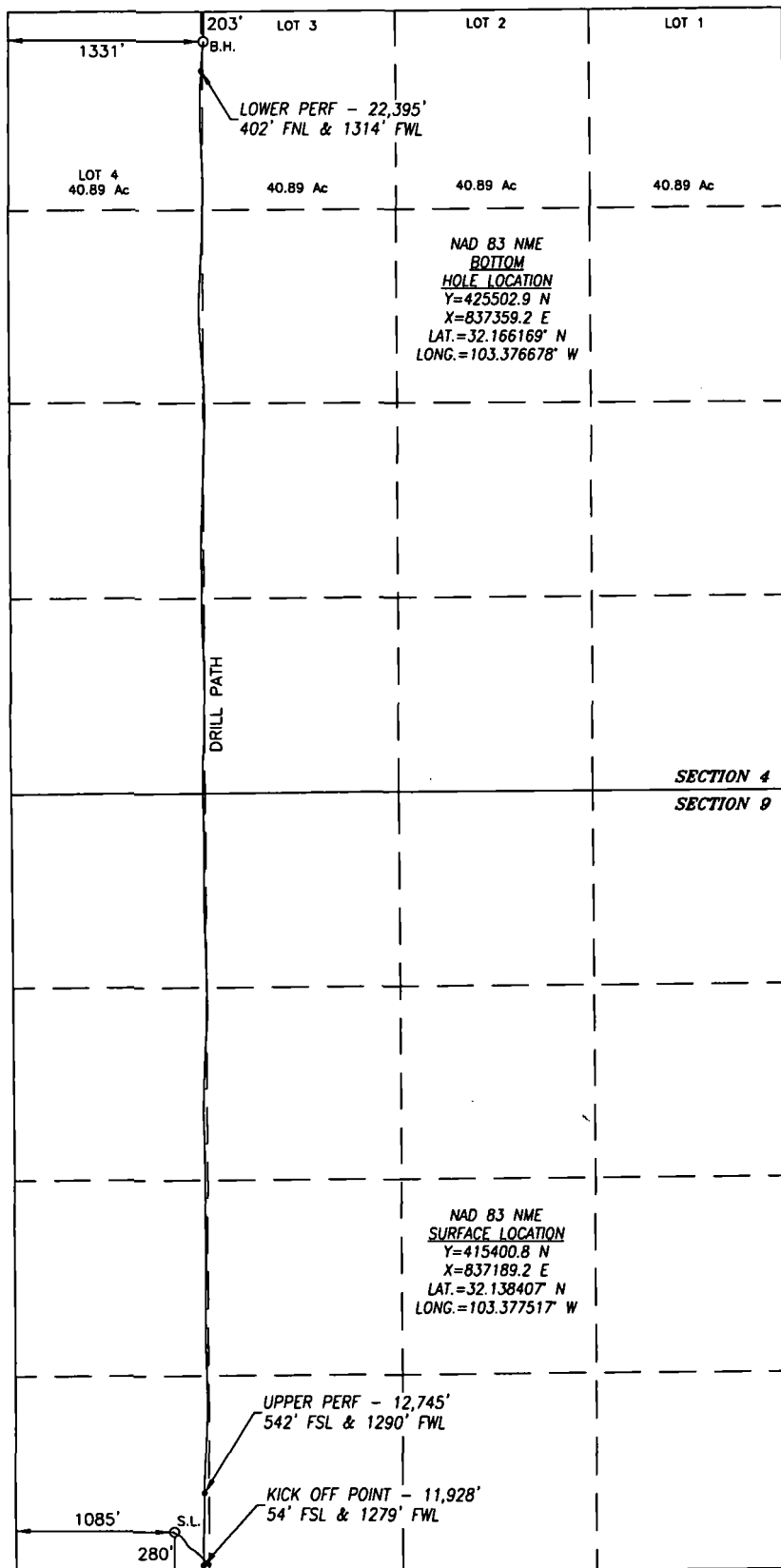
|                    |              |                  |               |         |                      |                           |                       |                        |               |
|--------------------|--------------|------------------|---------------|---------|----------------------|---------------------------|-----------------------|------------------------|---------------|
| UL or lot No.<br>3 | Section<br>4 | Township<br>25-S | Range<br>35-E | Lot Idn | Feet from the<br>203 | North/South line<br>NORTH | Feet from the<br>1331 | East/West line<br>WEST | County<br>LEA |
|--------------------|--------------|------------------|---------------|---------|----------------------|---------------------------|-----------------------|------------------------|---------------|

|                           |                 |                    |           |
|---------------------------|-----------------|--------------------|-----------|
| Dedicated Acres<br>641.72 | Joint or Infill | Consolidation Code | Order No. |
|---------------------------|-----------------|--------------------|-----------|

NO ALLOWABLE WILL BE ASSIGNED TO THIS COMPLETION UNTIL ALL INTERESTS HAVE BEEN CONSOLIDATED  
OR A NON-STANDARD UNIT HAS BEEN APPROVED BY THE DIVISION

SEE PAGE 2

|                         |                                     |                      |
|-------------------------|-------------------------------------|----------------------|
| Property Code<br>322742 | Property Name<br>FEZ FEDERAL COM    | Well Number<br>703H  |
| OGRID No.<br>229137     | Operator Name<br>COG OPERATING, LLC | Elevation<br>3250.6' |



SURFACE INFO AND BOREPATH SHOWN HEREON IS BASED ON DIRECTIONAL SURVEY REPORT PROVIDED BY COG OPERATING, LLC FOR THE FEZ FEDERAL COM #703H SUPPLIED TO HARCROW SURVEYING, LLC ON NOVEMBER 14, 2019

1200 0 1200  
SCALE: 1"=1200'

#### OPERATOR CERTIFICATION

I hereby certify that the information herein is true and complete to the best of my knowledge and belief, and that this organization either owns a working interest or unleased mineral interest in the land including the proposed bottom hole location or has a right to drill this well at this location pursuant to a contract with an owner of such mineral or working interest, or to a voluntary pooling agreement or a compulsory pooling order heretofore entered by the division.

*Amanda Avery* 2/3/19  
Signature Date

Amanda Avery

Printed Name

aaavery@concho.com

E-mail Address

#### SURVEYOR CERTIFICATION

I hereby certify that the well location shown on this plat was plotted from field notes of actual surveys made by me or under my supervision, and that the same is true and correct to the best of my belief.

DEC. 2, 2017/APR. 23, 2019

Date of Survey/Date of Geographic Survey

Signature & Seal of Professional Surveyor



*Chad Harcrow* 11/25/19  
Certificate No. CHAD HARCROW 17777

Intent ☐ As Drilled ☒

|                                      |  |                                   |                     |
|--------------------------------------|--|-----------------------------------|---------------------|
| API #<br>30-025-45279                |  |                                   |                     |
| Operator Name:<br>COG OPERATING, LLC |  | Property Name:<br>FEZ FEDERAL COM | Well Number<br>703H |

Kick Off Point (KOP)

|                       |              |                 |              |     |                          |                   |              |                  |               |
|-----------------------|--------------|-----------------|--------------|-----|--------------------------|-------------------|--------------|------------------|---------------|
| UL<br>M               | Section<br>9 | Township<br>25S | Range<br>35E | Lot | Feet<br>54               | From N/S<br>SOUTH | Feet<br>1279 | From E/W<br>WEST | County<br>LEA |
| Latitude<br>32.137785 |              |                 |              |     | Longitude<br>-103.376891 |                   |              |                  | NAD<br>83     |

First Take Point (FTP)

|                       |              |                 |              |     |                          |                   |              |                  |               |
|-----------------------|--------------|-----------------|--------------|-----|--------------------------|-------------------|--------------|------------------|---------------|
| UL<br>M               | Section<br>9 | Township<br>25S | Range<br>35E | Lot | Feet<br>542              | From N/S<br>SOUTH | Feet<br>1290 | From E/W<br>WEST | County<br>LEA |
| Latitude<br>32.139125 |              |                 |              |     | Longitude<br>-103.376854 |                   |              |                  | NAD<br>83     |

Last Take Point (LTP)

|                       |              |                 |              |     |                          |                   |              |                  |               |
|-----------------------|--------------|-----------------|--------------|-----|--------------------------|-------------------|--------------|------------------|---------------|
| UL<br>4               | Section<br>4 | Township<br>25S | Range<br>35E | Lot | Feet<br>402              | From N/S<br>NORTH | Feet<br>1314 | From E/W<br>WEST | County<br>LEA |
| Latitude<br>32.165621 |              |                 |              |     | Longitude<br>-103.376736 |                   |              |                  | NAD<br>83     |

Is this well the defining well for the Horizontal Spacing Unit? ☐

Is this well an infill well? ☐

If infill is yes please provide API if available, Operator Name and well number for Defining well for Horizontal Spacing Unit.

|                                     |  |                                   |                     |
|-------------------------------------|--|-----------------------------------|---------------------|
| API #<br>30-025-45275               |  |                                   |                     |
| Operator Name:<br>COG Operating LLC |  | Property Name:<br>Fez Federal Com | Well Number<br>602H |

KZ 06/29/2018