

District I  
1625 N. French Dr., Hobbs, NM 88240  
Phone: (575) 393-6161 Fax: (575) 393-0720  
District II  
811 S. First St., Artesia, NM 88210  
Phone: (575) 748-1283 Fax: (575) 748-9720  
District III  
1000 Rio Brazos Road, Aztec, NM 87410  
Phone: (505) 334-6178 Fax: (505) 334-6170  
District IV  
1220 S. St. Francis Dr., Santa Fe, NM 87505  
Phone: (505) 476-3460 Fax: (505) 476-3462

State of New Mexico  
Energy, Minerals & Natural Resources Department  
OIL CONSERVATION DIVISION  
1220 South St. Francis Dr.  
Santa Fe, NM 87505

Form C-102  
Revised August 1, 2011  
Submit one copy to appropriate  
District Office

☒ AMENDED REPORT  
AS DRILLED

WELL LOCATION AND ACREAGE DEDICATION PLAT

<sup>1</sup> API Number 30-025-46349	<sup>2</sup> Pool Code 37580	<sup>3</sup> Pool Name LEA; BONE SPRING, SOUTH
<sup>4</sup> Property Code 326098	<sup>5</sup> Property Name LAGUNA 23 2BS FEDERAL COM	<sup>6</sup> Well Number 4H
<sup>7</sup> OGRID No. 372137	<sup>8</sup> Operator Name CHISHOLM ENERGY OPERATING, LLC	<sup>9</sup> Elevation 3680'

<sup>10</sup> Surface Location

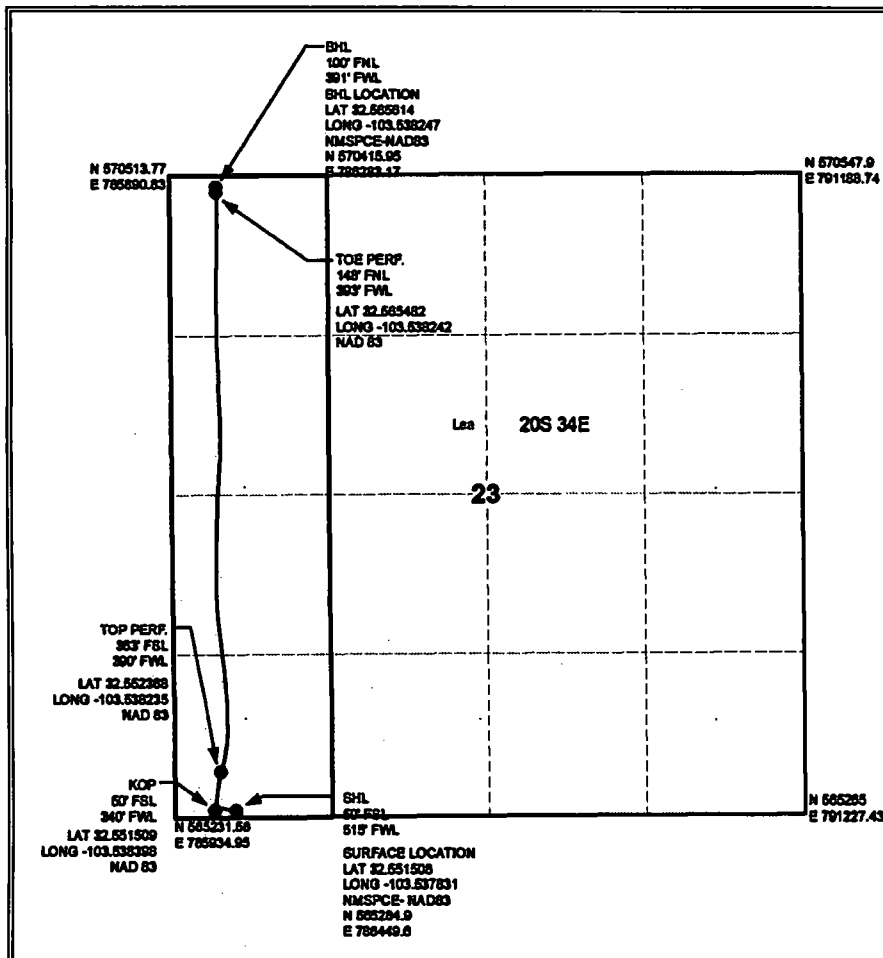
UL or lot no.	Section	Township	Range	Lot Idn	Feet from the	North/South line	Feet from the	East/West line	County
M	23	20 S	34 E		50	SOUTH	515	WEST	LEA

<sup>11</sup> Bottom Hole Location If Different From Surface

UL or lot no.	Section	Township	Range	Lot Idn	Feet from the	North/South line	Feet from the	East/West line	County
D	23	20S	34E		100	NORTH	391	WEST	LEA

<sup>12</sup> Dedicated Acres 160	<sup>13</sup> Joint or Infill	<sup>14</sup> Consolidation Code	<sup>15</sup> Order No.
--------------------------------------	-------------------------------	----------------------------------	-------------------------

No allowable will be assigned to this completion until all interests have been consolidated or a non-standard unit has been approved by the division.



<sup>17</sup> OPERATOR CERTIFICATION

I hereby certify that the information contained herein is true and complete to the best of my knowledge and belief, and that this organization either owns a working interest or unleased mineral interest in the land including the proposed bottom hole location or has a right to drill this well at this location pursuant to a contract with an owner of such a mineral or working interest, or to a voluntary pooling agreement or a compulsory pooling order heretofore entered by the division.

*Jennifer Elrod* 12/05/2019  
Signature Date

JENNIFER ELROD

Printed Name

JELROD@CHISHOLMENERGY.COM

E-mail Address

<sup>18</sup> SURVEYOR CERTIFICATION

I hereby certify that the well location shown on this plat was plotted from field notes of actual surveys made by me or under my supervision, and that the same is true and correct to the best of my belief.

Date of Survey

Signature and Seal of Professional Surveyor:

Certificate Number

Intent ☐ As Drilled ☒

API # 30-025-46349		
Operator Name: CHISHOLM ENERGY OPERATING, LLC	Property Name: LAGUNA 23 2BS FED COM	Well Number 4H

Kick Off Point (KOP)

UL M	Section 23	Township 20 S	Range 34 E	Lot	Feet 50	From N/S S	Feet 340	From E/W W	County LEA
Latitude 32.551509					Longitude -103.538398			NAD 83	

First Take Point (FTP)

UL M	Section 23	Township 20 S	Range 34 E	Lot	Feet 363	From N/S S	Feet 390	From E/W W	County LEA
Latitude 32.552368					Longitude -103.538235			NAD 83	

Last Take Point (LTP)

UL D	Section 23	Township 20 S	Range 34 E	Lot	Feet 148	From N/S N	Feet 393	From E/W W	County LEA
Latitude 32.565482					Longitude -103.538242			NAD 83	

Is this well the defining well for the Horizontal Spacing Unit? ☐ NO

Is this well an infill well? ☐ YES

If infill is yes please provide API if available, Operator Name and well number for Defining well for Horizontal Spacing Unit.

API # 30-025-40697		
Operator Name: CHISHOLM ENERGY OPERATING, LLC	Property Name: LAGUNA 23 FEDERAL COM	Well Number 2H

KZ 06/29/2018