

District I
1625 N. French Dr., Hobbs, NM 88240
Phone: (575) 393-6161 Fax: (575) 393-0720
District II
811 S. First St., Artesia, NM 88210
Phone: (575) 748-1283 Fax: (575) 748-9720
District III
1000 Rio Brazos Road, Aztec, NM 87410
Phone: (505) 334-6178 Fax: (505) 334-6170
District IV
1220 S. St. Francis Dr., Santa Fe, NM 87505
Phone: (505) 476-3460 Fax: (505) 476-3462

State of New Mexico **HOBBS OGD**
Energy, Minerals & Natural Resources Department
OIL CONSERVATION DIVISION
1220 South St. Francis Dr.
Santa Fe, NM 87505
DEC 18 2019
RECEIVED

Form C-102
Revised August 1, 2011
Submit one copy to appropriate
District Office
☐ AMENDED REPORT

WELL LOCATION AND ACREAGE DEDICATION PLAT

¹ API Number 30-025-46331	² Pool Code 96553	³ Pool Name Ojo Chiso; Bone Spring
⁴ Property Code 325659	⁵ Property Name CARNE ASADA STATE COM	⁶ Well Number 502H
⁷ OGRID No. 372165	⁸ Operator Name CENTENNIAL RESOURCE PRODUCTION, LLC	⁹ Elevation 3636.1'

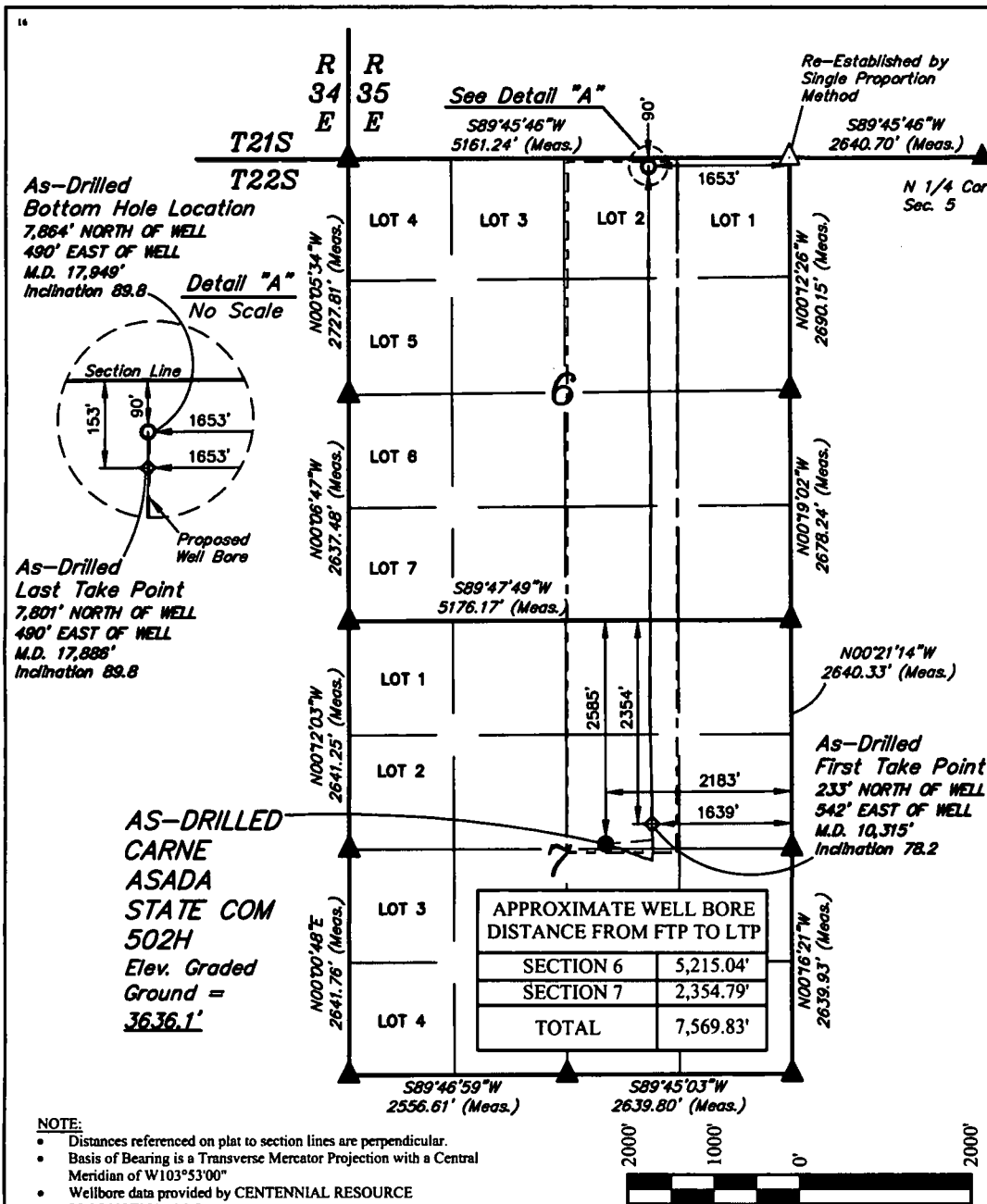
¹⁰ Surface Location

UL or lot no.	Section	Township	Range	Lot Idn	Feet from the	North/South line	Feet from the	East/West line	County
G	7	22S	35E		2585	NORTH	2183	EAST	LEA

¹¹ Bottom Hole Location If Different From Surface

UL or lot no.	Section	Township	Range	Lot Idn	Feet from the	North/South line	Feet from the	East/West line	County
2	6	22S	35E		90	NORTH	1653	EAST	LEA
¹² Dedicated Acres 242.45	¹³ Joint or Infill	¹⁴ Consolidation Code	¹⁵ Order No.						

No allowable will be assigned to this completion until all interests have been consolidated or a non-standard unit has been approved by the division.



¹⁶ "OPERATOR
CERTIFICATION

I hereby certify that the information contained herein is true and complete to the best of my knowledge and belief, and that this organization either owns a working interest or unleased mineral interest in the land including the proposed bottom hole location or has a right to drill this well at this location pursuant to a contract with an owner of such a mineral or working interest, or to a voluntary pooling agreement or a compulsory pooling order heretofore entered by the division.

Signature: *K. Schlichting* Date: **11/21/19**

Printed Name: **Kanicia Schlichting**

E-mail Address: **kanicia.schlichting@cdevinc.com**

"SURVEYOR
CERTIFICATION

I hereby certify that the well location shown on this plat was plotted from field notes of actual surveys made by me or under my supervision, and that the same is true and correct to the best of my belief.

October 11, 2019

Date of Survey
Signature and Seal of Professional Surveyor:



Certificate Number:

NAD 83 (AS-DRILLED SHL)
LATITUDE = 32°24'22.93" (32.406371°)
LONGITUDE = 103°24'19.07" (103.405299°)
STATE PLANE NAD 83 (N.M. EAST)
Y: 512812.12' X: 827746.54'
UTM, NAD 83 (ZONE 13)
Y: 11767033.29' X: 2132437.50'

NAD 83 (AS-DRILLED LTP)
LATITUDE = 32°25'40.09" (32.427803°)
LONGITUDE = 103°24'12.95" (103.403598°)
STATE PLANE NAD 83 (N.M. EAST)
Y: 520613.97' X: 828203.67'
UTM, NAD 83 (ZONE 13)
Y: 11774836.86' X: 2132845.89'

NAD 83 (AS-DRILLED FTP)
LATITUDE = 32°24'25.21" (32.407003°)
LONGITUDE = 103°24'12.74" (103.403539°)
STATE PLANE NAD 83 (N.M. EAST)
Y: 513046.94' X: 828287.73'
UTM, NAD 83 (ZONE 13)
Y: 11767271.45' X: 2132977.15'

NAD 83 (AS-DRILLED BHL)
LATITUDE = 32°25'40.71" (32.427976°)
LONGITUDE = 103°24'12.95" (103.403598°)
STATE PLANE NAD 83 (N.M. EAST)
Y: 520676.96' X: 828203.14'
UTM, NAD 83 (ZONE 13)
Y: 11774899.84' X: 2132844.96'

SCALE
DRAWN BY: R.J. 11-08-19

- = AS-DRILLED SURFACE HOLE LOCATION
- ◆ = AS-DRILLED FTP/LTP
- = AS-DRILLED BOTTOM HOLE LOCATION
- ▲ = SECTION CORNER LOCATED
- △ = SECTION CORNER RE-ESTABLISHED. (Not Set on Ground.)

Intent ☐ As Drilled ☒

API #
30-025-46331

Operator Name: Centennial Resource Production, LLC	Property Name: Carne Asada State Com	Well Number 502H
---	---	---------------------

HOBBS OCD

DEC 18 2019

RECEIVED

Kick Off Point (KOP)

UL G	Section 7	Township 22S	Range 35E	Lot G	Feet 2585	From N/S North	Feet 2183	From E/W East	County Lea
Latitude 32.406371					Longitude -103.405299			NAD 83	

First Take Point (FTP)

UL G	Section 7	Township 22S	Range 35E	Lot G	Feet 2354	From N/S North	Feet 1639	From E/W East	County Lea
Latitude 32.407003					Longitude -103.403539			NAD 83	

Last Take Point (LTP)

UL 2	Section 6	Township 22S	Range 35E	Lot 2	Feet 153	From N/S North	Feet 1653	From E/W East	County Lea
Latitude 32.427803					Longitude -103.403598			NAD 83	

Is this well the defining well for the Horizontal Spacing Unit? ☐ No

Is this well an infill well? ☐ Yes

If infill is yes please provide API if available, Operator Name and well number for Defining well for Horizontal Spacing Unit.

API #
30-025-46021

Operator Name: Centennial Resource Prod, LLC	Property Name: Carne Asada State Com	Well Number 501H
---	---	---------------------

KZ 06/29/2018