

District I
1625 N. French Dr., Hobbs, NM 88240
Phone: (575) 393-6161 Fax: (575) 393-0720
District II
811 S. First St., Artesia, NM 88210
Phone: (575) 748-1283 Fax: (575) 748-9720
District III
1000 Rio Brazos Road, Aztec, NM 87410
Phone: (505) 334-6178 Fax: (505) 334-6170
District IV
1220 S. St. Francis Dr., Santa Fe, NM 87505
Phone: (505) 476-3460 Fax: (505) 476-3462

State of New Mexico
Energy, Minerals & Natural Resources Department
OIL CONSERVATION DIVISION
1220 South St. Francis Dr.
Santa Fe, NM 87505

Form C-102
Revised August 1, 2011
Submit one copy to appropriate
District Office

☒ AMENDED REPORT
AS DRILLED

WELL LOCATION AND ACREAGE DEDICATION PLAT

¹ API Number 30-025-45131	² Pool Code 13160	³ Pool Name CORBIN; BONE SPRING, SOUTH
⁴ Property Code 322275	⁵ Property Name GAZELLE 32 STATE COM 1BS	⁶ Well Number 3H
⁷ OGRID No. 372137	⁸ Operator Name CHISHOLM ENERGY OPERATING, LLC	⁹ Elevation 3759'

¹⁰ Surface Location

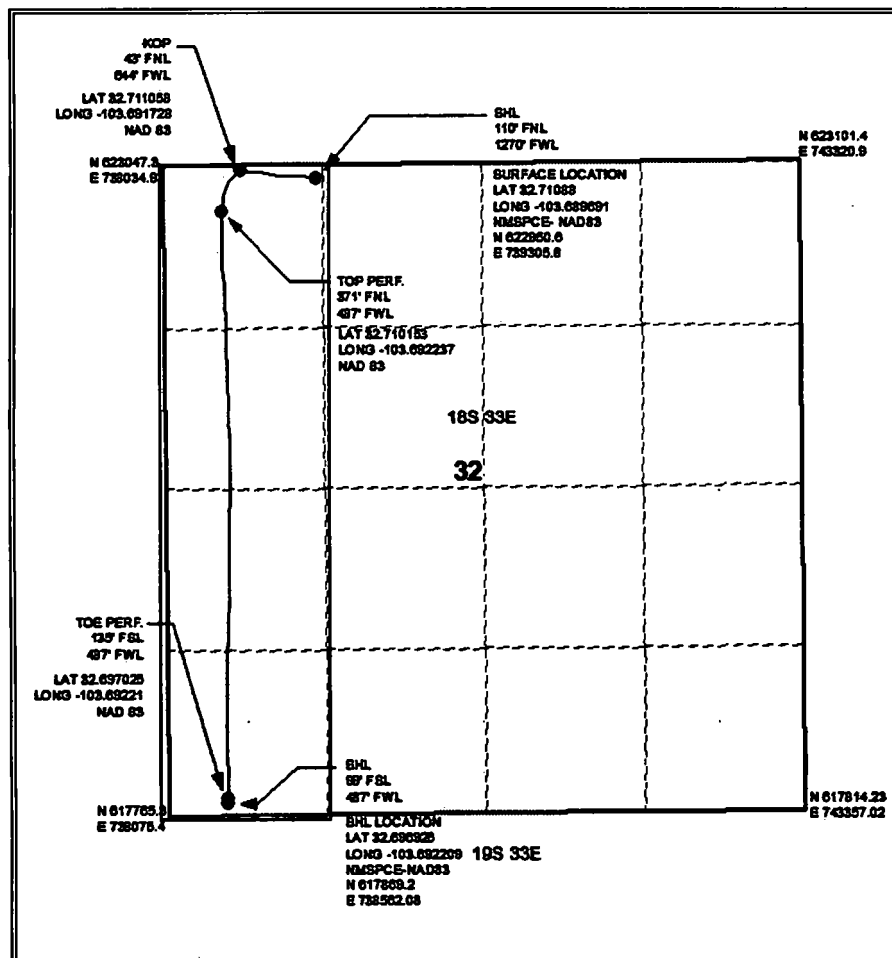
UL or lot no.	Section	Township	Range	Lot Idn	Feet from the	North/South line	Feet from the	East/West line	County
D	32	18S	33E		110	NORTH	1270	WEST	LEA

¹¹ Bottom Hole Location If Different From Surface

UL or lot no.	Section	Township	Range	Lot Idn	Feet from the	North/South line	Feet from the	East/West line	County
M	32	18S	33E		99	SOUTH	487	WEST	LEA

¹² Dedicated Acres 160	¹³ Joint or Infill INFILL	¹⁴ Consolidation Code	¹⁵ Order No.
--------------------------------------	---	----------------------------------	-------------------------

No allowable will be assigned to this completion until all interests have been consolidated or a non-standard unit has been approved by the division.



¹⁷ OPERATOR CERTIFICATION

I hereby certify that the information contained herein is true and complete to the best of my knowledge and belief, and that this organization either owns a working interest or unleased mineral interest in the land including the proposed bottom hole location or has a right to drill this well at this location pursuant to a contract with an owner of such a mineral or working interest, or to a voluntary pooling agreement or a compulsory pooling order heretofore entered by the division.

Jennifer Elrod 10/09/2019
Signature Date

JENNIFER ELROD

Printed Name

JELROD@CHISHOLMENERGY.COM

E-mail Address

¹⁸ SURVEYOR CERTIFICATION

I hereby certify that the well location shown on this plat was plotted from field notes of actual surveys made by me or under my supervision, and that the same is true and correct to the best of my belief.

Date of Survey

Signature and Seal of Professional Surveyor:

Certificate Number

Intent ☐ As Drilled ☒

API # 30-025-45131		
Operator Name: CHISHOLM ENERGY OPERATING, LLC	Property Name: GAZELLE 32 STATE COM 1BS	Well Number 3H

Kick Off Point (KOP)

UL D	Section 32	Township 18S	Range 33E	Lot	Feet 43	From N/S NORTH	Feet 644	From E/W WEST	County LEA
Latitude 32.711058					Longitude -103.691728			NAD 83	

First Take Point (FTP)

UL D	Section 32	Township 18S	Range 33E	Lot	Feet 371	From N/S NORTH	Feet 487	From E/W WEST	County LEA
Latitude 32.710153					Longitude -103.692237			NAD 83	

Last Take Point (LTP)

UL M	Section 32	Township 18S	Range 33E	Lot	Feet 135	From N/S SOUTH	Feet 487	From E/W WEST	County LEA
Latitude 32.697025					Longitude -103.69221			NAD 83	

Is this well the defining well for the Horizontal Spacing Unit? ☐

Is this well an infill well? ☐

If infill is yes please provide API if available, Operator Name and well number for Defining well for Horizontal Spacing Unit.

API # 30-025-43906		
Operator Name: CHISHOLM ENERGY OPERATING, LLC	Property Name: GAZELLE 32 STATE COM 2BS	Well Number 1H

KZ 06/29/2018