

ALM/515

HOBBS OCD

District I
1625 N. French Dr., Hobbs, NM 88240
Phone: (575) 393-6161 Fax: (575) 393-0720
District II
811 S. First St., Artesia, NM 88210
Phone: (575) 748-1283 Fax: (575) 748-9720
District III
1000 Rio Brazos Road, Aztec, NM 87410
Phone: (505) 334-6178 Fax: (505) 334-6170
District IV
1220 S. St. Francis Dr., Santa Fe, NM 87505
Phone: (505) 476-3460 Fax: (505) 476-3462

State of New Mexico
Energy, Minerals & Natural Resources Department
OIL CONSERVATION DIVISION
1220 South St. Francis Dr.
Santa Fe, NM 87505

Form C-102

Revised August 1, 2011

Submit one copy to appropriate
District Office

RECEIVED

☐ AMENDED REPORT

WELL LOCATION AND ACREAGE DEDICATION PLAT

1 API Number 20-025-46760	2 Pool Code 49680	3 Pool Name PEARL; BONE SPRING
4 Property Code 326995	5 Property Name HEREFORD 29/20 B20B FED COM	6 Well Number 1H
7 GRID NO. 14744	8 Operator Name MEWBOURNE OIL COMPANY	9 Elevation 3744'

10 Surface Location

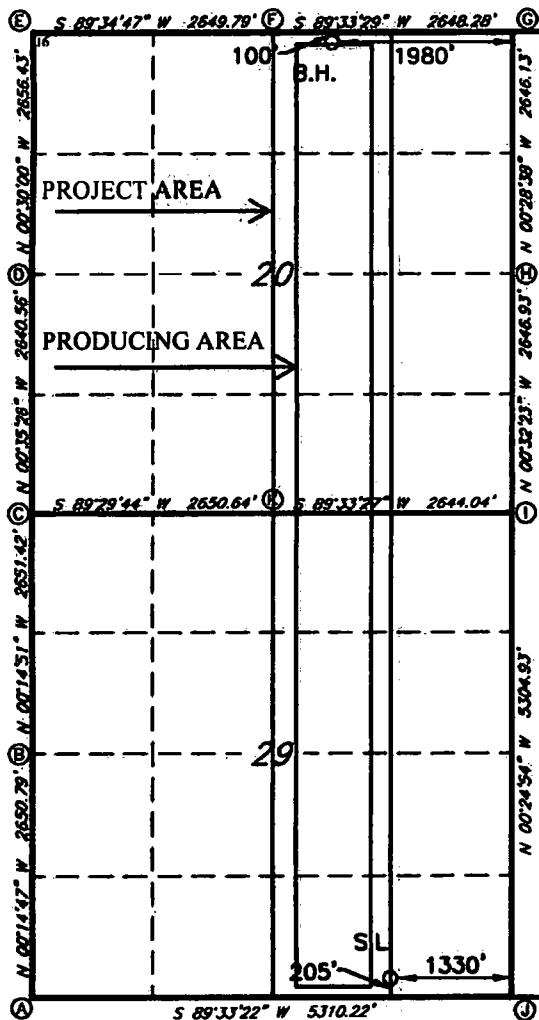
UL or lot no.	Section	Township	Range	Lot Idn	Feet from the	North/South line	Feet From the	East/West line	County
0	29	19S	35E		205	SOUTH	1330	EAST	LEA

11 Bottom Hole Location If Different From Surface

UL or lot no.	Section	Township	Range	Lot Idn	Feet from the	North/South line	Feet from the	East/West line	County
B	20	19S	35E		100	NORTH	1980	EAST	LEA

12 Dedicated Acres 320	13 Joint or Infill	14 Consolidation Code	15 Order No.
----------------------------------	--------------------	-----------------------	--------------

No allowable will be assigned to this completion until all interest have been consolidated or a non-standard unit has been approved by the division.



GEODETIC DATA
NAD 83 GRID - NM EAST

SURFACE LOCATION
N 592071.5 - E 805540.5
LAT: 32.6247222° N
LONG: 103.4751768° W

BOTTOM HOLE
N 802357.2 - E 804807.6
LAT: 32.6530077° N
LONG: 103.4772878° W

CORNER DATA
NAD 83 GRID - NM EAST

A: FOUND 2" STEEL PIPE
N 591835.8 - E 801562.7

B: FOUND 1/2" REBAR
N 594486.0 - E 801551.3

C: FOUND 5/8" REBAR
N 597136.9 - E 801539.8

D: FOUND 8"x4"x4" LIMESTONE ROCK
N 599776.8 - E 801512.6

E: FOUND LIMESTONE ROCK
N 602432.8 - E 801489.4

F: FOUND 1/2" REBAR
N 602452.0 - E 804138.6

G: FOUND 5/8" REBAR
N 602472.4 - E 806788.3

H: FOUND 6"x4"x4" LIMESTONE ROCK
N 599826.9 - E 806808.3

I: FOUND 1/2" REBAR
N 597180.8 - E 806833.3

J: FOUND 1" REBAR
N 591876.9 - E 806871.7

K: FOUND 8"x2"x4" LIMESTONE ROCK
N 597160.2 - E 804189.8

17 OPERATOR CERTIFICATION

I hereby certify that the information contained herein is true and complete to the best of my knowledge and belief, and that this organization either owns a working interest or unleased mineral interest in the land including the proposed bottom hole location or has a right to drill this well at this location pursuant to a contract with an owner of such a mineral or working interest, or in a voluntary pooling agreement or a compulsory pooling order previously entered by the division.

Bradley Bishop 2-4-19
Signature Date
BRADLEY BISHOP

Printed Name
BBISHOP@MEWBOURNE.COM
E-mail Address

18 SURVEYOR CERTIFICATION

I hereby certify that the well location shown on this plat was plotted from field notes of actual surveys made by me or under my supervision, and that the same is true and correct to the best of my belief.

1-17-19

Date of Survey

Signature and Seal of Professional Surveyor

19680

Certificate Number

1/22/19 NAME, S.L. & B.H. CHANGE

RRC - Job No.:

LS18101230R