

DISTRICT I

1625 N. FRANCHIS DR., HOBBS, NM 88240
Phone: (505) 839-6181 Fax: (505) 839-0720

DISTRICT II

811 S. FIRST ST., ARTESIA, NM 88210
Phone: (505) 748-1283 Fax: (505) 748-9720

DISTRICT III

1000 RIO KRAZOS RD., AZTEC, NM 87410
Phone: (505) 834-6176 Fax: (505) 834-6170

DISTRICT IV

1820 S. ST. FRANCIS DR., SANTA FE, NM 87505
Phone: (505) 476-3480 Fax: (505) 476-3485

BUREAU OF LAND MANAGEMENT

Energy, Minerals & Natural Resources Department

OIL CONSERVATION DIVISION

1220 SOUTH ST. FRANCIS DR.
Santa Fe, New Mexico 87505

Form C-102

Revised August 1, 2011

Submit one copy to appropriate

District Office

☐ AMENDED REPORT

WELL LOCATION AND ACREAGE DECLARATION PLAT

API Number 30-025-46859	Pool Code 98117	Well Name WC-025 G-0263504N; WOLFCAMP
Property Code 3271K5	Property Name BILLIKEN 7-6 FED COM	Well Number 10H
OGRID No. 6137	Operator Name DEVON ENERGY PRODUCTION COMPANY, L.P.	Elevation 3275.2'

Surface Location

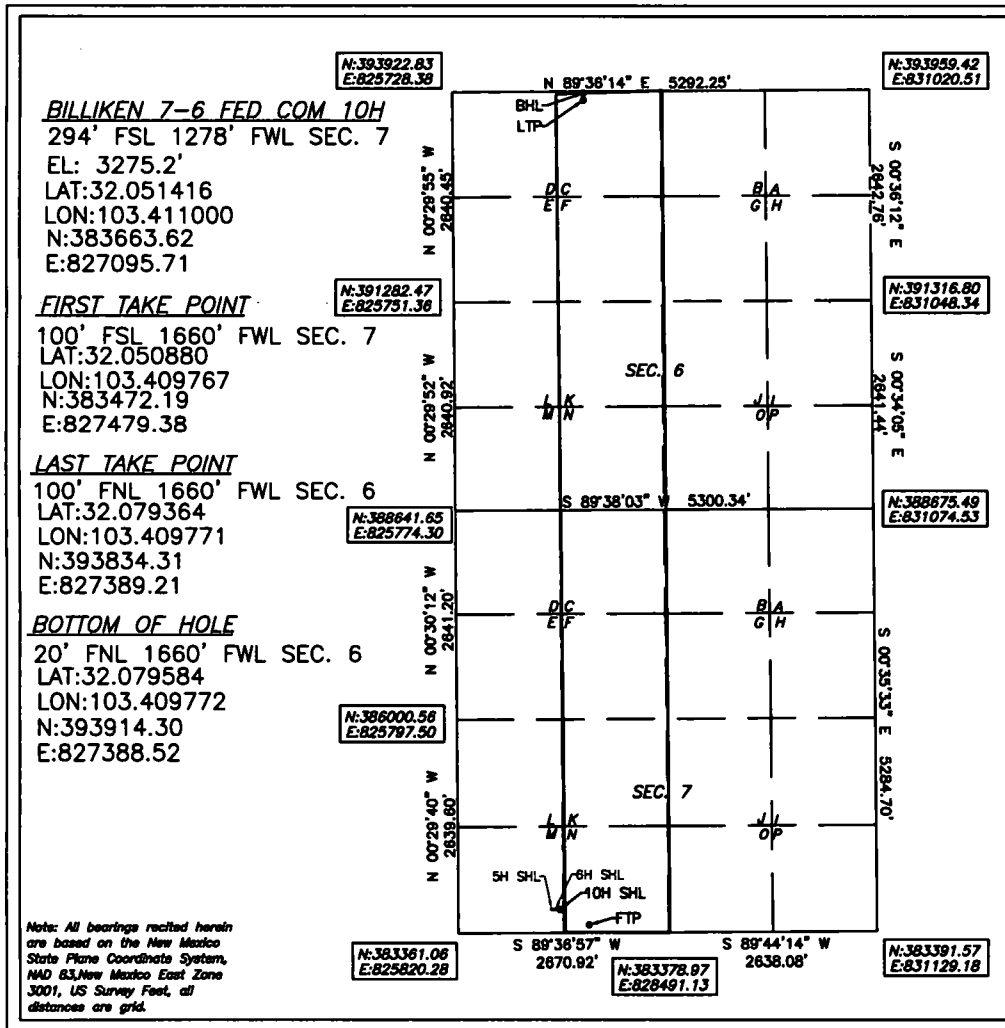
UL or lot No.	Section	Township	Range	Lot Idn	Feet from the	North/South line	Feet from the	East/West line	County
M	7	26-S	35-E	9	294	SOUTH	1278	WEST	LEA

Bottom Hole Location If Different From Surface

UL or lot No.	Section	Township	Range	Lot Idn	Feet from the	North/South line	Feet from the	East/West line	County
C	6	26-S	35-E		20	NORTH	1660	WEST	LEA

Dedicated Acres	Joint or Infill	Consolidation Code	Order No.
324.08			

NO ALLOWABLE WILL BE ASSIGNED TO THIS COMPLETION UNTIL ALL INTERESTS HAVE BEEN CONSOLIDATED
OR A NON-STANDARD UNIT HAS BEEN APPROVED BY THE DIVISION



OPERATOR CERTIFICATION

I hereby certify that the information herein is true and complete to the best of my knowledge and belief, and that this organization either owns a working interest or unleased mineral interest in the land including the proposed bottom hole location or has a right to drill this well at this location pursuant to a contract with an owner of such mineral or working interest, or to a voluntary pooling agreement or a compulsory pooling order heretofore entered by the division.

Rebecca Deal 8/19/2019
Signature Date

Rebecca Deal, Regulatory Analyst
Printed Name

rebecca.deal@dvn.com
E-mail Address

SURVEYOR CERTIFICATION

I hereby certify that the well location shown on this plat was plotted from field notes of actual surveys made by me or under my supervision, and that the same is true and correct to the best of my belief.

7/2019

Date of Survey

Signature & Seal of Professional Surveyor



07/26/19

Certificate No. 22404 B.L. LAMAN
DATE OF SURVEY: 6/02/19 DRAWN BY: JP

Intent ☒ As Drilled ☐

API #

30-025-46859

Operator Name: DEVON ENERGY PRODUCTION COMPANY, LP.	Property Name: BILLIKEN 7-6 FED COM	Well Number 10H
---	--	--------------------

Kick Off Point (KOP)

UL	Section 7	Township 26S	Range 35E	Lot	Feet 50	From N/S FSL	Feet 1660	From E/W FWL	County LEA
Latitude 32.050736					Longitude -103.409774			NAD 83	

First Take Point (FTP)

UL N	Section 7	Township 26-S	Range 35-E	Lot	Feet 100	From N/S SOUTH	Feet 1660	From E/W WEST	County LEA
Latitude 32.050880					Longitude 103.409767			NAD 83	

Last Take Point (LTP)

UL C	Section 6	Township 26-S	Range 35-E	Lot	Feet 100	From N/S NORTH	Feet 1660	From E/W WEST	County LEA
Latitude 32.079364					Longitude 103.409771			NAD 83	

Is this well the defining well for the Horizontal Spacing Unit?

☐ N

Is this well an infill well?

☐ Y

If infill is yes please provide API if available, Operator Name and well number for Defining well for Horizontal Spacing Unit.

API #

Operator Name: DEVON ENERGY PRODUCTION CO.	Property Name: BILLIKEN 7-6 FED COM	Well Number 5H
---	--	-------------------

KZ 06/29/2018