

DISTRICT I
1625 N. FRENCH DR., HOBBS, NM 88240
Phone: (505) 593-6161 Fax: (505) 593-6720

DISTRICT II
811 S. FIRST ST., ARTESIA, NM 88210
Phone: (505) 748-1283 Fax: (505) 748-9720

DISTRICT III
1000 RIO BRAZOS RD., AZTEC, NM 87410
Phone: (505) 834-6176 Fax: (505) 834-6170

DISTRICT IV
1820 S. ST. FRANCIS DR., SANTA FE, NM 87508
Phone: (505) 476-3460 Fax: (505) 476-3462

State of New Mexico
Energy, Minerals & Natural Resources Department
OIL CONSERVATION DIVISION
1220 SOUTH ST. FRANCIS DRIVE
Santa Fe, New Mexico 87503

Form C-102

Revised August 1, 2011

Submit one copy to appropriate
District Office

☐ AMENDED REPORT

WELL LOCATION AND ACREAGE DEDICATION

API Number 30-024-46866	Pool Code 97784	Pool Name WC-025 G-06 S253201M; UPPER BONE SPR
Property Code 39911	Property Name BELL LAKE 24 FED	Well Number 012H
GRID No. 6137	Operator Name DEVON ENERGY PRODUCTION COMPANY, L.P.	Elevation 3573.9'

Surface Location

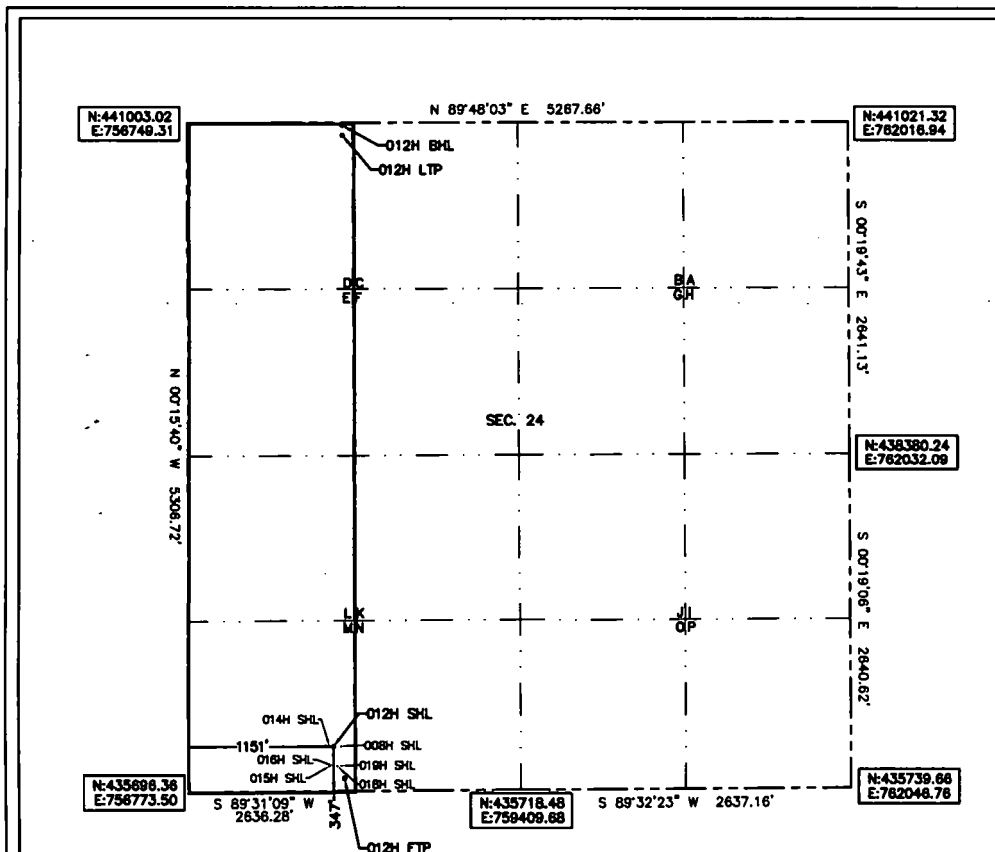
UL or lot No.	Section	Township	Range	Lot Idn	Feet from the	North/South line	Feet from the	East/West line	County
M	24	24-S	32-E		347	SOUTH	1151	WEST	LEA

Bottom Hole Location If Different From Surface

UL or lot No.	Section	Township	Range	Lot Idn	Feet from the	North/South line	Feet from the	East/West line	County
D	24	24-S	32-E		20	NORTH	1236	WEST	LEA

Dedicated Acres 160	Joint or Infill	Consolidation Code	Order No.
-------------------------------	-----------------	--------------------	-----------

**NO ALLOWABLE WILL BE ASSIGNED TO THIS COMPLETION UNTIL ALL INTERESTS HAVE BEEN CONSOLIDATED
OR A NON-STANDARD UNIT HAS BEEN APPROVED BY THE DIVISION**



Note: All bearings recited herein are based on the New Mexico State Plane Coordinate System, NAD 83, New Mexico East Zone 3001, US Survey Feet, all distances are grid.

BELL LAKE 24 FED 012H
ELEV: 3573.9'
LAT: 32.196249
LON: -103.633151
N: 436053.01
E: 757922.88

FIRST TAKE POINT
100' FSL 1236' FWL
LAT: 32.196170
LON: -103.632878
N: 435806.73
E: 758009.01

LAST TAKE POINT
100' FNL 1236' FWL
LAT: 32.210190
LON: -103.632846
N: 440907.32
E: 757985.78

BOTTOM OF HOLE
20' FNL 1236' FWL
LAT: 32.210410
LON: -103.632845
N: 440987.32
E: 757985.40

OPERATOR CERTIFICATION

I hereby certify that the information herein is true and complete to the best of my knowledge and belief, and that this organization either owns a working interest or leased mineral interest in the land including the proposed bottom hole location or has a right to drill this well at this location pursuant to a contract with an owner of such mineral or working interest, or to a voluntary pooling agreement or a compulsory pooling order heretofore entered by the division.

Rebecca Deal 6/17/2019
Signature Date

Rebecca Deal, Regulatory Analyst
Printed Name

rebecca.deal@dvn.com
E-mail Address

SURVEYOR CERTIFICATION

I hereby certify that the well location shown on this plat was plotted from field notes of actual surveys made by me or under my supervision, and that the same is true and correct to the best of my belief.

5/2019

Date of Survey

Signature & Seal of Professional Surveyor



05/22/19

Certificate No. 22404

B.L. LAMAN

DRAWN BY: JP

Intent ☒ As Drilled ☐

API #

30-025-46868

Operator Name: DEVON ENERGY PRODUCTION COMPANY, LP.	Property Name: BELL LAKE 24 FED	Well Number 012H
---	------------------------------------	---------------------

Kick Off Point (KOP)

UL	Section 24	Township 24S	Range 32E	Lot	Feet 200	From N/S FSL	Feet 1236	From E/W FWL	County LEA
Latitude 32.196443					Longitude -103.632880				NAD 83

First Take Point (FTP)

UL M	Section 24	Township 24-S	Range 32-E	Lot	Feet 100	From N/S SOUTH	Feet 1236	From E/W WEST	County LEA
Latitude 32.196170					Longitude 103.632878				NAD 83

Last Take Point (LTP)

UL D	Section 24	Township 24-S	Range 32-E	Lot	Feet 100	From N/S NORTH	Feet 1236	From E/W WEST	County LEA
Latitude 32.210190					Longitude 103.632846				NAD 83

Is this well the defining well for the Horizontal Spacing Unit? ☐

Is this well an infill well? ☐

If infill is yes please provide API if available, Operator Name and well number for Defining well for Horizontal Spacing Unit.

API #

30-025-41182

Operator Name: DEVON ENERGY PRODUCTION CO.	Property Name: BELL LAKE 24 FED	Well Number 1H
---	------------------------------------	-------------------

KZ 06/29/2018