

DISTRICT I
1625 N. FRENCH DR., HOBBS, NM 88240
Phone: (505) 893-8161 Fax: (505) 893-0720

DISTRICT II
811 S. FIRST ST., ARTESIA, NM 88203
Phone: (505) 748-1233 Fax: (505) 748-1234

DISTRICT III
1000 RIO BRAZOS RD., AZTEC, NM 87410
Phone: (505) 334-6170 Fax: (505) 334-6170

DISTRICT IV
1220 S. ST. FRANCIS DR., SANTA FE, NM 87506
Phone: (505) 478-3460 Fax: (505) 478-3462

State of New Mexico
Energy, Minerals & Natural Resources Department
SOIL CONSERVATION DIVISION
1220 SOUTH ST. FRANCIS DR.
Santa Fe, New Mexico 87505

Form C-102

Revised August 1, 2011

**Submit one copy to appropriate
District Office**

☐ **AMENDED REPORT**

WELL LOCATION AND ACREAGE DEDICATION PLAT

API Number 70-025-46871	Pool Code 98309	Pool Name WC-025 G-08 S243213C;WOLFCAMP
Property Code 39911	Property Name BELL LAKE 24 FED	Well Number 018H
OGRID No. 6137	Operator Name DEVON ENERGY PRODUCTION COMPANY, L.P.	Elevation 3574.9'

Surface Location

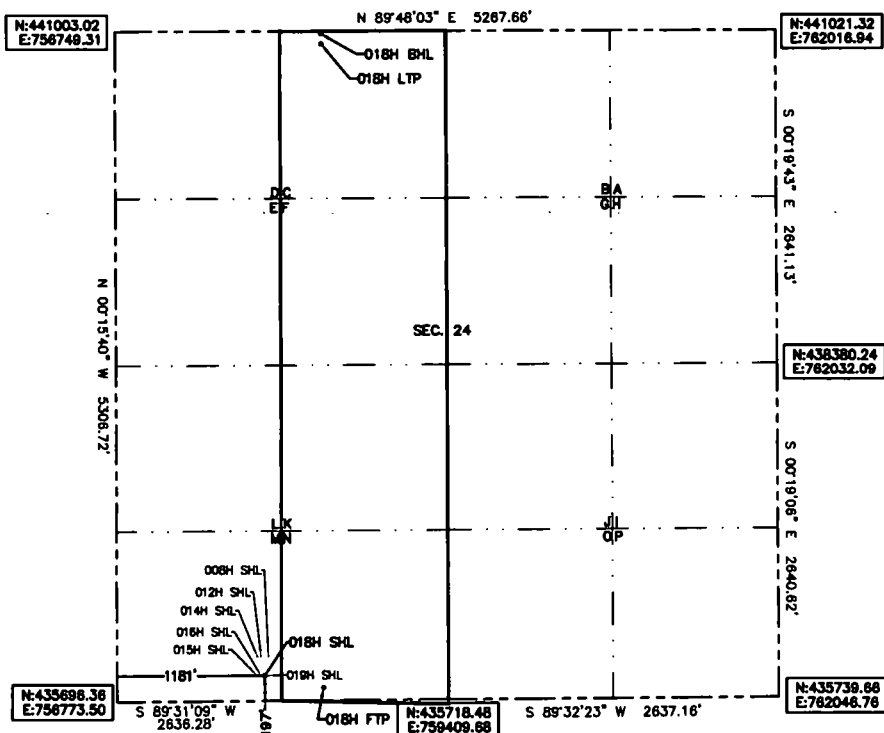
UL or lot No.	Section	Township	Range	Lot Idn	Feet from the	North/South line	Feet from the	East/West line	County
M	24	24-S	32-E		197	SOUTH	1181	WEST	LEA

Bottom Hole Location If Different From Surface

UL or lot No.	Section	Township	Range	Lot Idn	Feet from the	North/South line	Feet from the	East/West line	County
C	24	24-S	32-E		20	NORTH	1650	WEST	LEA

Dedicated Acres	Joint or Infill	Consolidation Code	Order No.
160			

**NO ALLOWABLE WILL BE ASSIGNED TO THIS COMPLETION UNTIL ALL INTERESTS HAVE BEEN CONSOLIDATED
OR A NON-STANDARD UNIT HAS BEEN APPROVED BY THE DIVISION**



Note: All bearings recited herein are based on the New Mexico State Plane Coordinate System, NAD 83, New Mexico East Zone 3001, US Survey Feet, all distances are arcl.

BELL LAKE 24 FED 018H
 FLEV: 3574.0
 LAT: 32.198436
 LON: -103.633055
 N: 435803.27
 E: 757853.57

FIRST TAKE POINT
100' FSL 1650' FWL
LAT:32.196172
LON:-103.631540
N:435810.20
E:758422.89

BOTTOM OF HOLE
20' FNL 1850' FWL
LAT:32.210407
LON:-103.631507
N:440988.75
E:758399.39

LAST TAKE POINT
100' FNL 1650' FNL
LAT: 32.210187
LON: -103.631507
N: 440908.78
E: 758399.78

OPERATOR CERTIFICATION

I hereby certify that the information herein is true and complete to the best of my knowledge and belief, and that this organization either owns a working interest or unleased mineral interest in the land including the proposed bottom hole location or has a right to drill this well at this location pursuant to a contract with an owner of such mineral or working interest, or to a voluntary pooling agreement or a compulsory pooling order heretofore entered by the division.

Rebecca Deal 6/18/2019
Signature Date

Rebecca Deal, Regulatory Analyst

rebecca.deal@dvn.com

E-mail Address

SURVEYOR CERTIFICATION

I hereby certify that the well location shown on this plat was plotted from field notes of actual surveys made by me or under my supervision, and that the same is true and correct to the best of my belief.

5/2019

Date of Survey _____

Signature & Seal of Professional Surveyor



05/20/19

Certificate No. 22404

B.L. LAMAN

DRAWN BY: CM

Intent ☒ As Drilled ☐

API #
30-024-

Operator Name: DEVON ENERGY PRODUCTION COMPANY, LP.	Property Name: BELL LAKE 24 FED	Well Number 018H
---	---	----------------------------

Kick Off Point (KOP)

UL	Section 24	Township 24S	Range 32E	Lot	Feet 50	From N/S FSL	Feet 1650	From E/W FWL	County LEA
Latitude 32.196024					Longitude -103.631543			NAD 83	

First Take Point (FTP)

UL N	Section 24	Township 24-S	Range 32-E	Lot	Feet 100	From N/S SOUTH	Feet 1650	From E/W WEST	County LEA
Latitude 32.196172					Longitude 103.631540			NAD 83	

Last Take Point (LTP)

UL C	Section 24	Township 24-S	Range 32-E	Lot	Feet 100	From N/S NORTH	Feet 1650	From E/W WEST	County LEA
Latitude 32.210187					Longitude 103.631507			NAD 83	

Is this well the defining well for the Horizontal Spacing Unit? ☒

Is this well an infill well? ☐

If infill is yes please provide API if available, Operator Name and well number for Defining well for Horizontal Spacing Unit.

API #

Operator Name:	Property Name:	Well Number
----------------	----------------	-------------

KZ 06/29/2018