

Submit 1 Copy To Appropriate District Office
District I - (575) 393-6161
1625 N. French Dr., Hobbs, NM 88240
District II - (575) 748-1283
811 S. First St., Artesia, NM 88210
District III - (505) 334-6178
1000 Rio Brazos Rd., Aztec, NM 87410
District IV - (505) 476-3460
1220 S. St. Francis Dr., Santa Fe, NM 87505

State of New Mexico
Energy, Minerals and Natural Resources

Form C-103
Revised July 18, 2013

OIL CONSERVATION DIVISION
1220 South St. Francis
Santa Fe, NM 87505

WELL API NO. 30-025-37122
5. Indicate Type of Lease STATE <input checked="" type="checkbox"/> FEE <input type="checkbox"/>
6. State Oil & Gas Lease No.
7. Lease Name or Unit Agreement Name South Vacuum
8. Well Number 274
9. OGRID Number 371101
10. Pool name or Wildcat SWD; MISS-DEVONIAN 96319

SUNDRY NOTICES AND REPORTS ON WELLS (DO NOT USE THIS FORM FOR PROPOSALS TO DRILL OR TO DEEPEN OR PLUG BACK TO A DIFFERENT RESERVOIR. USE "APPLICATION FOR PERMIT" (FORM C-101) FOR SUCH PROPOSALS.)	
1. Type of Well: Oil Well <input type="checkbox"/> Gas Well <input checked="" type="checkbox"/> Other - SWD	
2. Name of Operator Clearwater SWD, LLC	
3. Address of Operator P.O. Box 1476, Lovington, NM 88260	
4. Well Location Unit Letter <u>P</u> : <u>960</u> feet from the <u>South</u> line and <u>693</u> feet from the <u>East</u> line Section <u>27</u> Township <u>18-S</u> Range <u>35-E</u> NMPM <u>Lea</u> County	
11. Elevation (Show whether DR, RKB, RT, GR, etc.) 3,887' GR	

12. Check Appropriate Box to Indicate Nature of Notice, Report or Other Data

NOTICE OF INTENTION TO:
PERFORM REMEDIAL WORK ☐ PLUG AND ABANDON ☐
TEMPORARILY ABANDON ☐ CHANGE PLANS ☐
PULL OR ALTER CASING ☐ MULTIPLE COMPL ☐
DOWNHOLE COMMINGLE ☐
CLOSED-LOOP SYSTEM ☐
OTHER: ☐

SUBSEQUENT REPORT OF:
REMEDIAL WORK ☐ ALTERING CASING ☐
COMMENCE DRILLING OPNS. ☐ P AND A ☐
CASING/CEMENT JOB ☐
OTHER: Repair damaged casing ☒

13. Describe proposed or completed operations. (Clearly state all pertinent details, and give pertinent dates, including estimated date of starting any proposed work). SEE RULE 19.15.7.14 NMAC. For Multiple Completions: Attach wellbore diagram of proposed completion or recompletion.

SEE ATTACHED WORKOVER DETAILS AND SCHEMATIC

Spud Date:

10/28/2019

Rig Release Date:

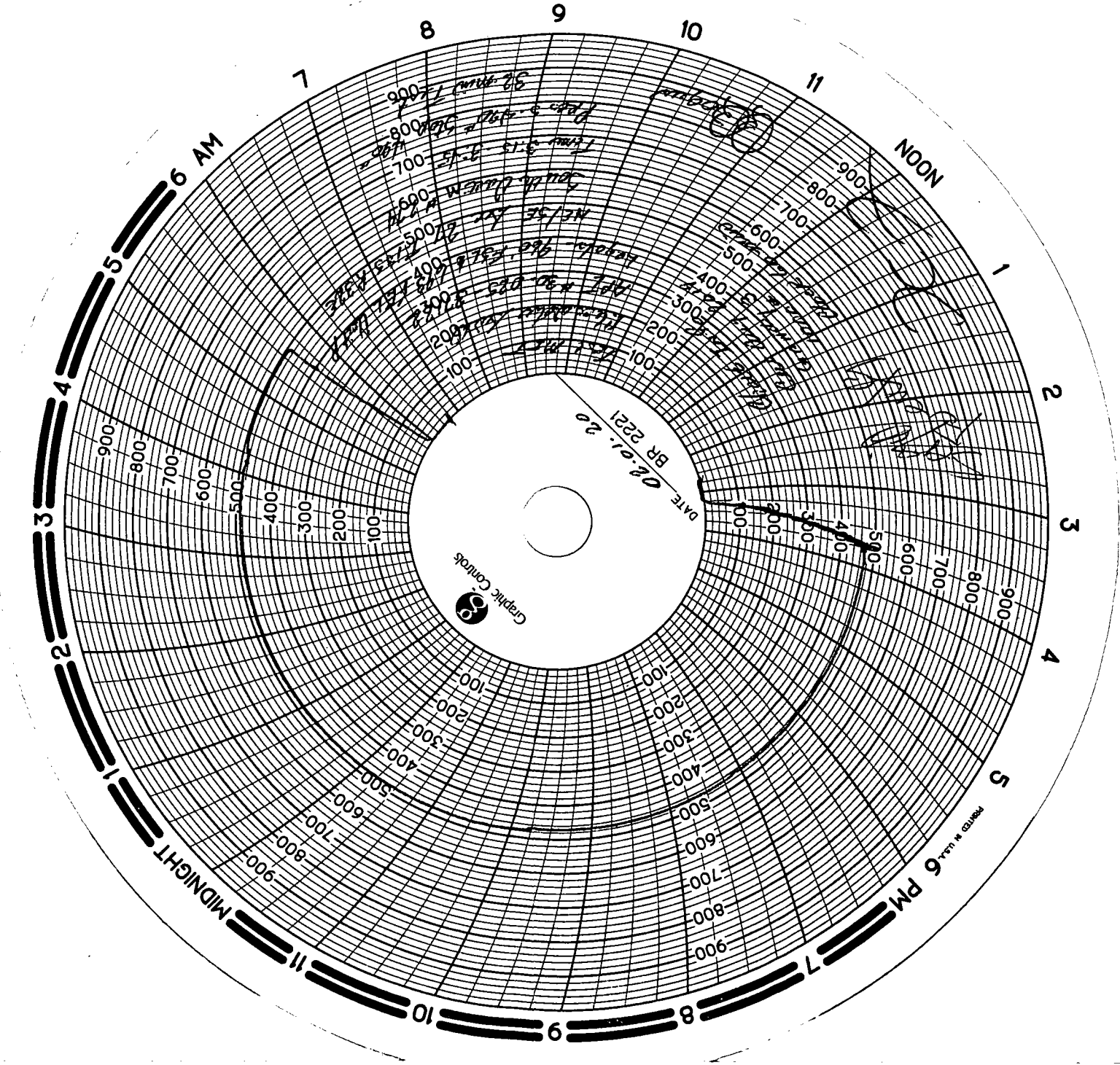
2/1/2020

I hereby certify that the information above is true and complete to the best of my knowledge and belief.

SIGNATURE Larry Gandy TITLE President DATE 2/5/2020

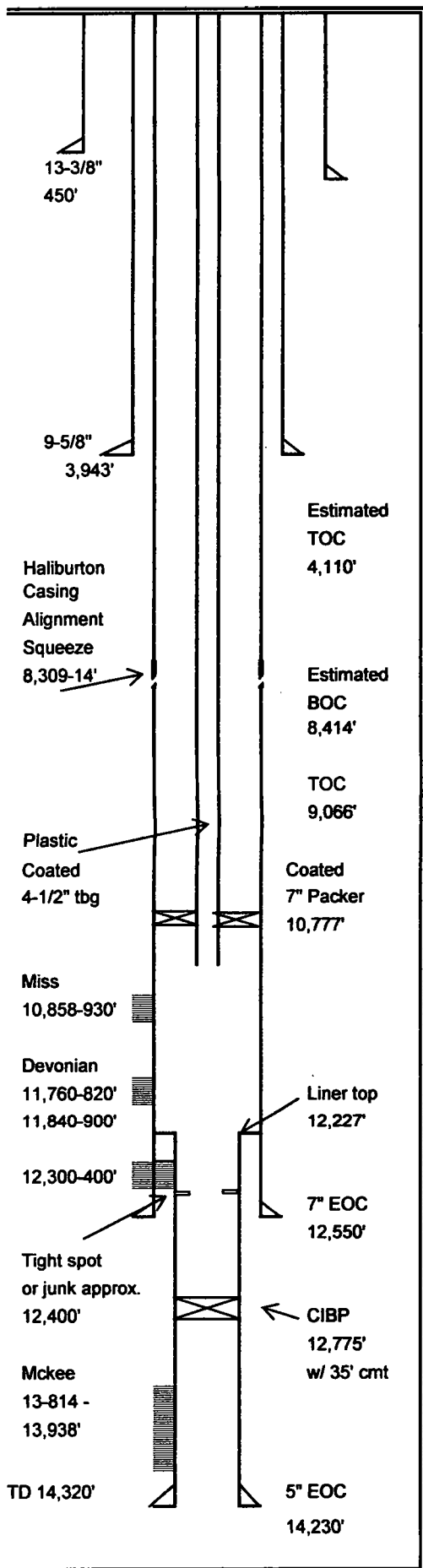
Type or print name Larry Gandy E-mail address: lgandy@gandycorporation.com PHONE: 575-392-3575
For State Use Only

APPROVED BY: Kerry Fort TITLE CO A DATE 2-17-20
Conditions of Approval (if any):



South Vacuum 274 SWD
API Number 30-025-37122
Workover Operations
10/28/2019 to 2/1/2020

- RU Pulling Unit, ND tree and NU BOP's. Release packer and POOH with 4-1/2" plastic coated tubing and 7" packer.
- TIH with 2-7/8" work string and 6" gauge ring. Found tight spot at 8,334'. PU swedge and worked through and descended to 10,812'. POOH
- RU wireline and GIH with casing inspection tool. Ran log from 10,820' to surface. Found casing part from 8,309-8,314'. GIH and set CIBP at 9,300'.
- GIH with 7" X 30' Haliburton Casing Re-alignment Tool. Set tool from 8,301' to 8,332', with cement retainer at 8,301'. Pumped 100 sacks of Class H cement, reversed out and POOH. (see schematic for estimated tops of cement) WOC GIH with work string and drilling assembly and drilled out cement to 9,203'. POOH
- GIH with tubing, packer and retrievable plug and test casing from 9,203' to 4,400' feet (+,-) and found two casing leaks at approximately 8,012' (+,-) and 4,915' (+,-).
- GBH and set cement retainer at 7,910' and pumped 400 sacks of class H cement. POOH, WOC.
- GIH and stage balanced cement plug from approximately 5,002' to 4,415', with 135 sacks of Class H cement (two separate squeezes). Pressured to 2000 psi and SI. WOC
- GIH with work string and drilling assembly and drill out cement from approximately 4,900 to 5,060', circulate clean. Continue in hole and drill out retainer and cement from 7,910, to 8,362', clean hole to top of CIBP at 9,300'. POOH
- GIH with bit and drill out CIBP and clean 7" casing, through Mississippian and Devonian perforations to top of 5" liner at 12,227'. POOH.
- TIH with 4-1/2" bit assembly and clean out 5" liner through perforations to 12,375'. Well on Vacuum, POOH
- TIH with 4-1/2" plastic coated tubing and 7" Arrowset Plastic Coated Packer. Set Packer at 10,777', ND BOP's NU tree, tested and charted MIT to 490 psi for 30 minutes (see attached chart). Test Held. Bled off, RD pulling unit, clean location.
- Resume disposal operations as per Order SWD-1444.



Lease: South Vacuum Well: 274 SWD API # 30-025-37122
 Operator: Clearwater SWD, LLC
 Field: South Vacuum County: Lea State New Mexico
 Section 27 Township 18-S Range 35-E
 Elev. GL 3,887 Elev. DF Elev. KB
 Spudded 4/30/2005 Completed 9/1/2005

Surface Casing 13-3/8" 48# Grade
 Set @ 450' Hole Size 17-1/2"
 TOC surf. Sacks 328

Intermediate Casing 9-5/8" 40# Grade
 Set @ 3,943' Hole Size 12-1/4"
 TOC Surface Sacks 1,298

Production Casing 7" 26 & 29# Grade N-80
 Set @ 12,550' Hole Size 8-3/4"
 TOC 9,066' Sacks 810

Liner Record 5" 18# Grade
 Top @ 12,227' Bottom @ 14,230'
 Screen Hole Size 6-1/8"
 TOC 11,773' Sacks 262

Tubing Detail 4-1/2" Plastic Coated Grade/Trd.
 Pkr. Set @ 10,798' EOT
 Nipples
 Anchors Rods

Perforation Record Mississippian 10,858-78', 10,890-900', 10,920-30'
Devonian 11,760-820', 11,840-900', 12,300-400'

McKee - 13,814-18', 13,824-30', 13,844-48'
13,864-68', 13,894-98', 13,934-38' Abandoned

Completion Tight spot or junk approximately 12,400'

**PRESENT COMPLETION 2/1/2020
(WELL SCHEMATIC)**