

District I
1625 N. French Dr., Hobbs, NM 88240
Phone: (575) 393-6161 Fax: (575) 393-0720
District II
811 S. First St., Artesia, NM 88210
Phone: (575) 748-1283 Fax: (575) 748-9720
District III
1000 Rio Brazos Road, Aztec, NM 87410
Phone: (505) 334-6178 Fax: (505) 334-6170
District IV
1220 S. St. Francis Dr., Santa Fe, NM 87505
Phone: (505) 476-3460 Fax: (505) 476-3462

State of New Mexico
Energy, Minerals & Natural Resources
Department
OIL CONSERVATION DIVISION
1220 South St. Francis Dr.
Santa Fe, NM 87505

FORM C-102
Revised August 1, 2011
Submit one copy to appropriate
District Office

FEB 20 2020

RECEIVED

☐ AMENDED REPORT

WELL LOCATION AND ACREAGE DEDICATION PLAT

¹ API Number 30-025-46233	² Pool Code 98180	³ Pool Name WC025 G09 S253309P; UPPER WOLFCAMP
⁴ Property Code 325949	⁵ Property Name VALIANT 24 FED COM	⁶ Well Number #723H
⁷ OGRID No. 7377	⁸ Operator Name EOG RESOURCES, INC.	⁹ Elevation 3458'

¹⁰Surface Location

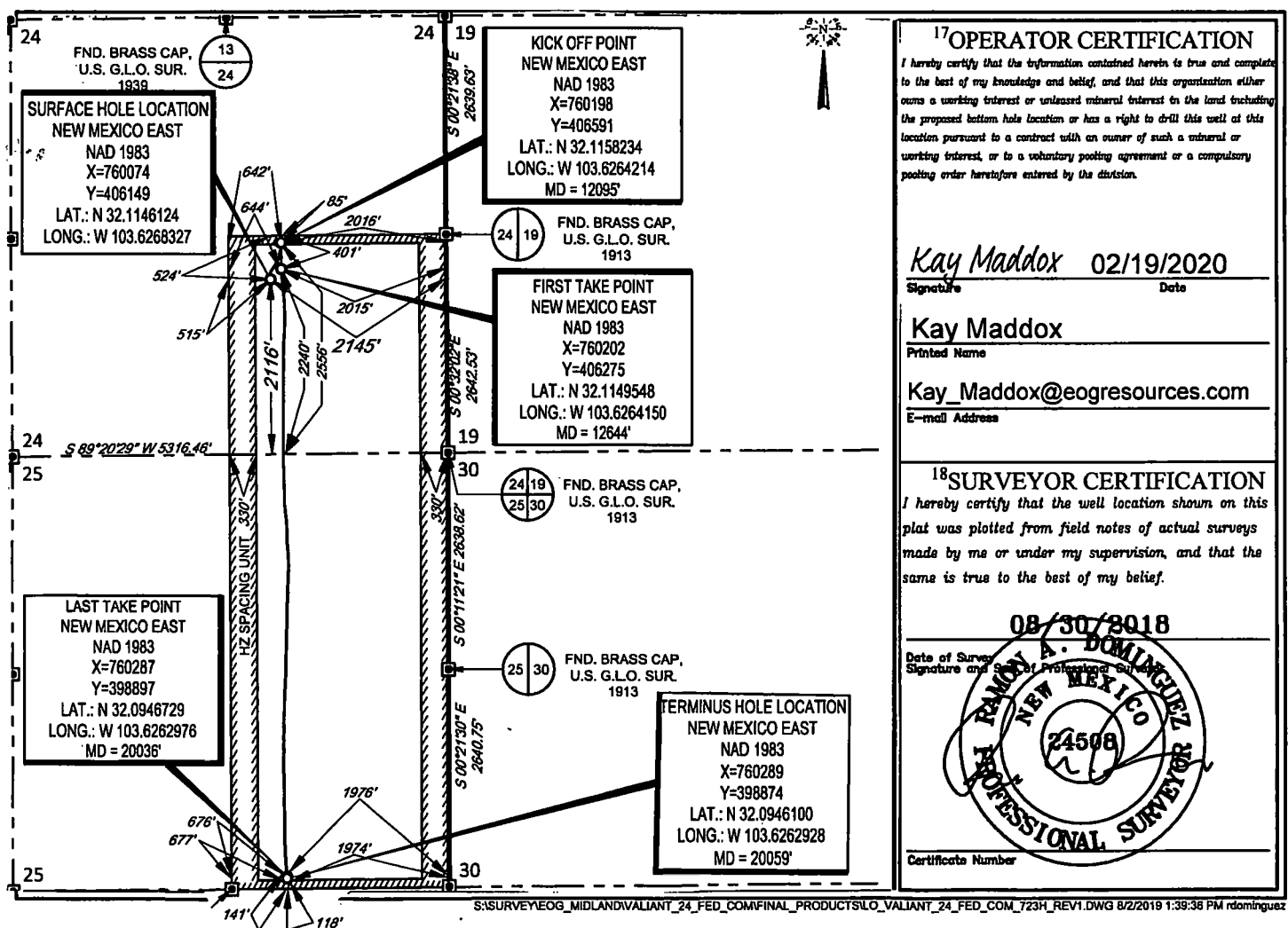
UL or lot no. J	Section 24	Township 25-S	Range 32-E	Lot Idn -	Feet from the 2116'	North/South line SOUTH	Feet from the 2145'	East/West line EAST	County LEA
--------------------	---------------	------------------	---------------	--------------	------------------------	---------------------------	------------------------	------------------------	---------------

¹¹Bottom Hole Location If Different From Surface

UL or lot no. 0	Section 25	Township 25-S	Range 32-E	Lot Idn -	Feet from the 118'	North/South line SOUTH	Feet from the 1974'	East/West line EAST	County LEA
--------------------	---------------	------------------	---------------	--------------	-----------------------	---------------------------	------------------------	------------------------	---------------

¹² Dedicated Acres 480.00	¹³ Joint or Infill	¹⁴ Consolidation Code	¹⁵ Order No.
---	-------------------------------	----------------------------------	-------------------------

No allowable will be assigned to this completion until all interests have been consolidated or a non-standard unit has been approved by the division.



KZ 06/29/2018

SECTION 24, TOWNSHIP 25-S, RANGE 32-E, N.M.P.M.
LEA COUNTY, NEW MEXICO

SCALE: 1" = 2000'

POINT	UTM ZONE 13 COORDINATES
SHL	X=2065438.198 Y=11659987.138
KOP	X=2065559.894 Y=11660409.218
FTP	X=2065565.898 Y=11660093.308
LTP	X=2065698.252 Y=11652717.111
THL	X=2065698.033 Y=11652694.245

FND. BRASS CAP.
U.S. G.L.O. SUR.
1939

FND. BRASS CAP.
U.S. G.L.O. SUR.
1939

FND. BRASS CAP.
U.S. G.L.O. SUR.
1913

KICK OFF POINT
NEW MEXICO EAST
NAD 1983
X=760198
Y=406591
LAT.: N 32.1158234
LONG.: W 103.6264214
MD = 12095'

FND. BRASS CAP.
U.S. G.L.O. SUR.
1939

SURFACE HOLE LOCATION
NEW MEXICO EAST
NAD 1983
X=760074
Y=406149
LAT.: N 32.1146124
LONG.: W 103.6268327

FND. BRASS CAP.
U.S. G.L.O. SUR.
1913

FIRST TAKE POINT
NEW MEXICO EAST
NAD 1983
X=760202
Y=406275
LAT.: N 32.1149548
LONG.: W 103.6264150
MD = 12644'

FND. BRASS CAP.
U.S. G.L.O. SUR.
1939

LAST TAKE POINT
NEW MEXICO EAST
NAD 1983
X=760287
Y=398897
LAT.: N 32.0948729
LONG.: W 103.6262976
MD = 20036'

FND. BRASS CAP.
U.S. G.L.O. SUR.
1913

FND. BRASS CAP.
U.S. G.L.O. SUR.
1913

TERMINUS HOLE LOCATION
NEW MEXICO EAST
NAD 1983
X=760289
Y=398874
LAT.: N 32.0946100
LONG.: W 103.6262928
MD = 20059'

FND. BRASS CAP.
U.S. G.L.O. SUR.
1939

FND. BRASS CAP.
U.S. G.L.O. SUR.
1939

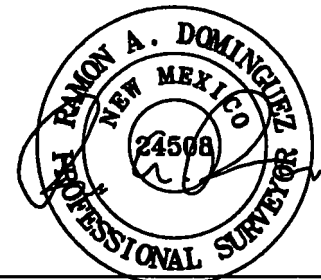
FND. BRASS CAP.
U.S. G.L.O. SUR.
1913

LEASE NAME & WELL NO.: VALIANT 24 FED COM 723H
SECTION 24 TWP 25-S RGE 32-E SURVEY N.M.P.M.
COUNTY LEA STATE NM ELEVATION 3458'
DESCRIPTION 2116' FSL & 2145' FEL



TOPOGRAPHIC
LOYALTY INNOVATION LEGACY

1400 EVERMAN PARKWAY, Ste. 148 • FT. WORTH, TEXAS 76140
TELEPHONE: (817) 744-7512 • FAX (817) 744-7554
2803 NORTH BIG SPRING • MIDLAND, TEXAS 79705
TELEPHONE: (432) 682-1653 OR (800) 787-1653 • FAX (432) 682-1743
WWW.TOPOGRAPHIC.COM



Ramon A. Dominguez, P.S. No. 24508
JANUARY 15, 2020



VALIANT 24 FED COM 723H AS-COMplete	REVISION:
DATE: 01/15/2020	
FILE: AD_VALIANT_24_FED_COM_723H	
DRAWN BY: JLS	
SHEET: 1 OF 1	

NOTES:

1. ORIGINAL DOCUMENT SIZE: 8.5" X 14"
2. ALL BEARINGS, DISTANCES, AND COORDINATE VALUES CONTAINED HEREIN ARE GRID BASED UPON THE NEW MEXICO COORDINATE SYSTEM, EAST ZONE, U.S. SURVEY FEET, NORTH AMERICAN DATUM 1983.
3. THIS WELL LOCATION SHOWN HEREON HAS BEEN SURVEYED ON THE GROUND UNDER MY SUPERVISION AND PREPARED ACCORDING TO THE EVIDENCE FOUND AT THE TIME OF SURVEY, AND DATA PROVIDED BY EOG RESOURCES, INC. THIS CERTIFICATION IS MADE AND LIMITED TO THOSE PERSONS OR ENTITIES SHOWN ON THE FACE OF THIS PLAT AND IS NON-TRANSFERABLE. THIS SURVEY IS CERTIFIED FOR THIS TRANSACTION ONLY.