

DISTRICT I
1625 N. FRENCH DR., HOBBES, NM 88240
Phone: (505) 838-6181 Fax: (505) 838-0720

DISTRICT II
811 S. FIRST ST., ARTESIA, NM 88210
Phone: (505) 748-1283 Fax: (505) 748-0720

DISTRICT III
1000 RIO BRAZOS RD., AZTEC, NM 87410
Phone: (505) 334-6178 Fax: (505) 334-6170

DISTRICT IV
1820 S. ST. FRANCIS DR., SANTA FE, NM 87505
Phone: (505) 476-3480 Fax: (505) 476-3480

State of New Mexico
Energy, Minerals & Natural Resources Department
OIL CONSERVATION DIVISION
1220 SOUTH ST. FRANCIS DR.
Santa Fe, New Mexico 87505

Form C-102
Revised August 1, 2011
Submit one copy to appropriate
District Office

☐ AMENDED REPORT

WELL LOCATION AND ACREAGE DEDICATION PLAT

API Number 30-025-46922	Pool Code 96776 98117	Pool Name WC-025 6-09 3263504N WOLF CAMP
Property Code 327175	Property Name COBBER 21-28 FED	Well Number 6H
GRID No. 6137	Operator Name DEVON ENERGY PRODUCTION COMPANY, L.P.	Elevation 3307.4'

Surface Location

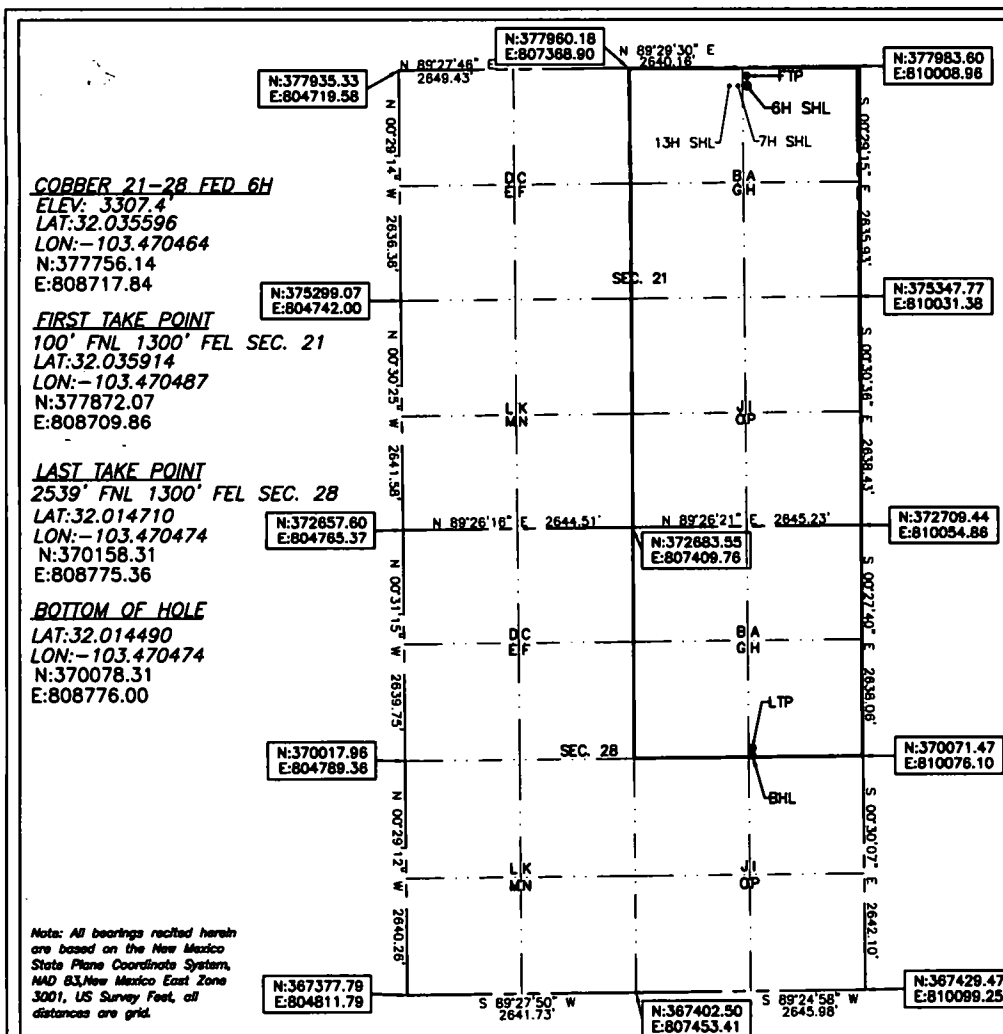
UL or lot No.	Section	Township	Range	Lot Idn	Feet from the	North/South line	Feet from the	East/West line	County
A	21	26-S	34-E		216	NORTH	1293	EAST	LEA

Bottom Hole Location If Different From Surface

UL or lot No.	Section	Township	Range	Lot Idn	Feet from the	North/South line	Feet from the	East/West line	County
H	28	26-S	34-E		2619	NORTH	1300	EAST	LEA

Dedicated Acres	Joint or Infill	Consolidation Code	Order No.
480			

**NO ALLOWABLE WILL BE ASSIGNED TO THIS COMPLETION UNTIL ALL INTERESTS HAVE BEEN CONSOLIDATED
OR A NON-STANDARD UNIT HAS BEEN APPROVED BY THE DIVISION**



OPERATOR CERTIFICATION

I hereby certify that the information herein is true and complete to the best of my knowledge and belief, and that this organization either owns a working interest or unless mineral interest in the land including the proposed bottom hole location or has a right to drill this well at this location pursuant to a contract with an owner of such mineral or working interest, or to a voluntary pooling agreement or a compulsory pooling order heretofore entered by the division.

Rebecca Deal 9/30/2019
Signature Date

Rebecca Deal, Regulatory Analyst

Printed Name

rebecca.deal@devon.com

E-mail Address

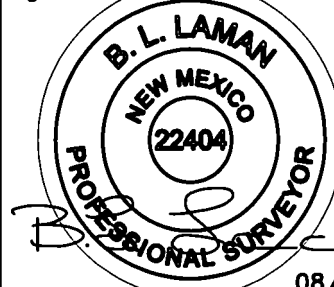
SURVEYOR CERTIFICATION

I hereby certify that the well location shown on this plat was plotted from field notes of actual surveys made by me or under my supervision, and that the same is true and correct to the best of my belief.

7/2019

Date of Survey

Signature & Seal of Professional Surveyor



08/23/19

Certificate No. 22404 B.L. LAMAN

DRAWN BY: CM

Intent ☒ As Drilled ☐

API #
025-46922

Operator Name: DEVON ENERGY PRODUCTION COMPANY, LP.	Property Name: COBBER 21-28 FED	Well Number 6H
---	------------------------------------	-------------------

HOBBS GCD
FEB 28 2020
RECEIVED

Kick Off Point (KOP)

UL	Section 21	Township 26S	Range 34E	Lot	Feet 50	From N/S FNL	Feet 1300	From E/W FEL	County LEA
Latitude 32.036052					Longitude -103.470482				NAD 83

First Take Point (FTP)

UL A	Section 21	Township 26S	Range 34E	Lot	Feet 100	From N/S NORTH	Feet 1300	From E/W EAST	County LEA
Latitude 32.035914					Longitude 103.470487				NAD 83

Last Take Point (LTP)

UL H	Section 28	Township 26S	Range 34E	Lot	Feet 2539	From N/S NORTH	Feet 1330	From E/W EAST	County LEA
Latitude 32.014710					Longitude 103.470474				NAD 83

Is this well the defining well for the Horizontal Spacing Unit? ☐ N

Is this well an infill well? ☐ Y

If infill is yes please provide API if available, Operator Name and well number for Defining well for Horizontal Spacing Unit.

API #	Operator Name: DEVON ENERGY PRODUCTION CO., L.P.	Property Name: COBBER 21-18 FED	Well Number 8H
-------	--	------------------------------------	-------------------

KZ 06/29/2018