

District I  
1625 N. French Dr., Hobbs, NM 88240  
Phone: (575) 393-6161 Fax: (575) 393-0720  
District II  
811 S. First St., Artesia, NM 88210  
Phone: (575) 748-1283 Fax: (575) 748-9720  
District III  
1000 Rio Arriba Road, Aztec, NM 87410  
Phone: (505) 334-6178 Fax: (505) 334-6170  
District IV  
1220 S. St. Francis Dr., Santa Fe, NM 87505  
Phone: (505) 476-3460 Fax: (505) 476-3462

State of New Mexico  
Energy, Minerals & Natural Resources Department  
**OIL CONSERVATION DIVISION**  
1220 South St. Francis Dr.  
Santa Fe, NM 87505

**HOBBS OCD**

FEB 26 2020

**RECEIVED**

Form C-102  
Revised August 1, 2011  
Submit one copy to appropriate  
District Office

☐ AMENDED REPORT

**WELL LOCATION AND ACREAGE DEDICATION PLAT**

API Number <b>30-025-46924</b>	Pool Code <b>51683</b>	Pool Name <b>RED TANK, BONE SPRING</b>
Property Code <b>721612</b>	Property Name <b>TACO CAT "27_34" FEDERAL COM</b>	Well Number <b>23H</b>
OGRID No. <b>116696</b>	Operator Name <b>OXY USA INC.</b>	Elevation <b>3636.1'</b>

**Surface Location**

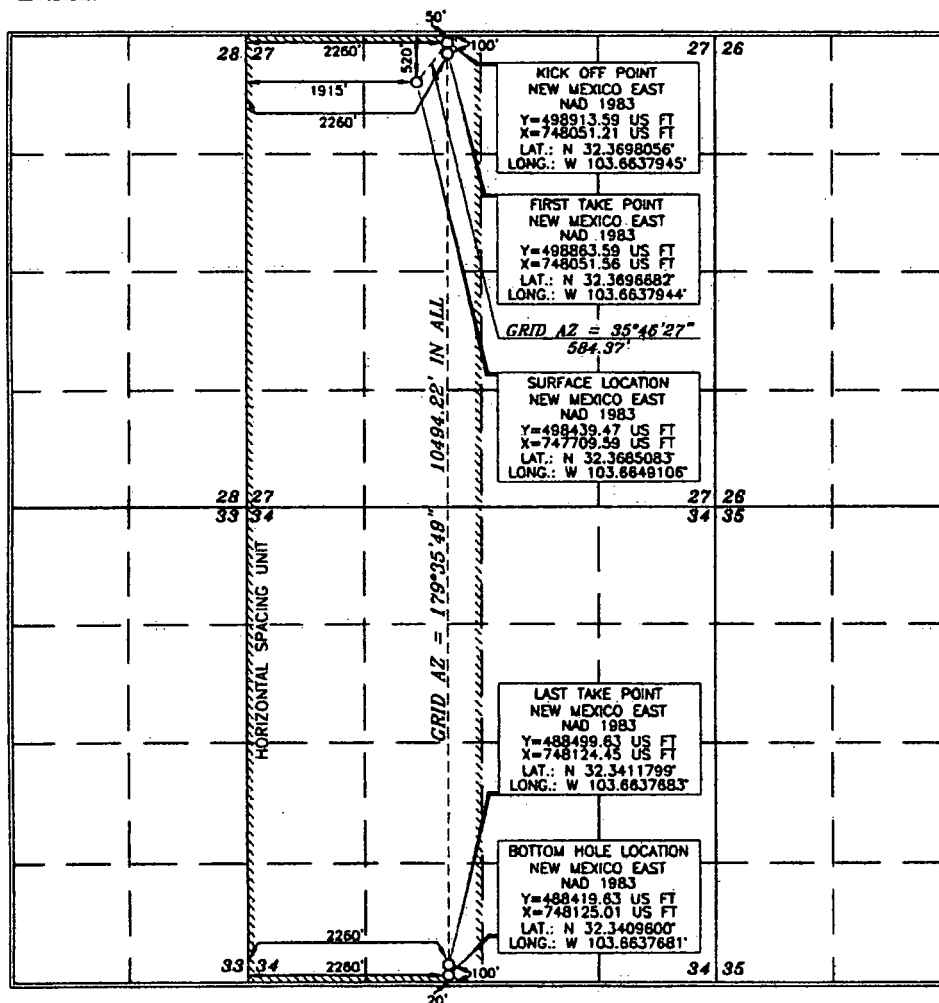
UL or lot no.	Section	Township	Range	Lot Idn	Feet from the	North/South line	Feet from the	East/West line	County
C	27	22 SOUTH	32 EAST, N.M.P.M.		520'	NORTH	1915'	WEST	LEA

**Bottom Hole Location If Different From Surface**

UL or lot no.	Section	Township	Range	Lot Idn	Feet from the	North/South line	Feet from the	East/West line	County
N	34	22 SOUTH	32 EAST, N.M.P.M.		20'	SOUTH	2260'	WEST	LEA

Dedicated Acres <b>640</b>	Joint or Infill	Consolidation Code	Order No.
-------------------------------	-----------------	--------------------	-----------

No allowable will be assigned to this completion until all interests have been consolidated or a non-standard unit has been approved by the division.



**OPERATOR CERTIFICATION**

I hereby certify that the information contained herein is true and complete to the best of my knowledge and belief, and that this organization either owns a working interest or undivided mineral interest in the land including the proposed bottom hole location or has a right to drill this well at this location pursuant to a contract with an owner of such a mineral or working interest, or to a voluntary pooling agreement or a compulsory pooling order heretofore entered by the division.

*Leslie Reeves* 1-17-19  
Signature Date

**LESLIE REEVES**  
Printed Name

**LESLEE-REEVES@OXY.COM**  
E-mail Address

**SURVEYOR CERTIFICATION**

I hereby certify that the well location shown on this plat was plotted from field notes of actual surveys made by me or under my supervision, and that the same is true and correct to the best of my belief.

**TERRY J. ASH**  
15079  
OCTOBER 30, 2018  
Date of Survey

*Terry J. Ash*  
Signature and Seal of Professional Surveyor

*Terry J. Ash* 11/20/2018  
Certificate Number 15079

WO# 18103OWL-b (NA)