

District I
1625 N. French Dr., Hobbs, NM 88240
Phone: (575) 393-6161 Fax: (575) 393-0720
District II
811 S. First St., Artesia, NM 88210
Phone: (575) 748-1283 Fax: (575) 748-9720
District III
1000 Rio Brazos Road, Aztec, NM 87410
Phone: (505) 334-6178 Fax: (505) 334-6170
District IV
1220 S. St. Francis Dr., Santa Fe, NM 87505
Phone: (505) 476-3460 Fax: (505) 476-3462

State of New Mexico
Energy, Minerals & Natural Resources
Department
OIL CONSERVATION DIVISION
1220 South St. Francis Dr.
Santa Fe, NM 87505

FORM C-102

Revised August 1, 2011

Submit one copy to appropriate

District Office

☐ AMENDED REPORT

WELL LOCATION AND ACREAGE DEDICATION PLAT

¹ API Number 30-025-46024	² Pool Code 98158	³ Pool Name WC025 G09 S253236A; UPPER WOLFCAMP
⁴ Property Code 325727	⁵ Property Name QUIJOTE 2 STATE COM	
⁶ Well Number 702H	⁷ Operator Name EOG RESOURCES, INC.	
⁸ OGRID No. 7377	⁹ Elevation 3341'	

¹⁰Surface Location

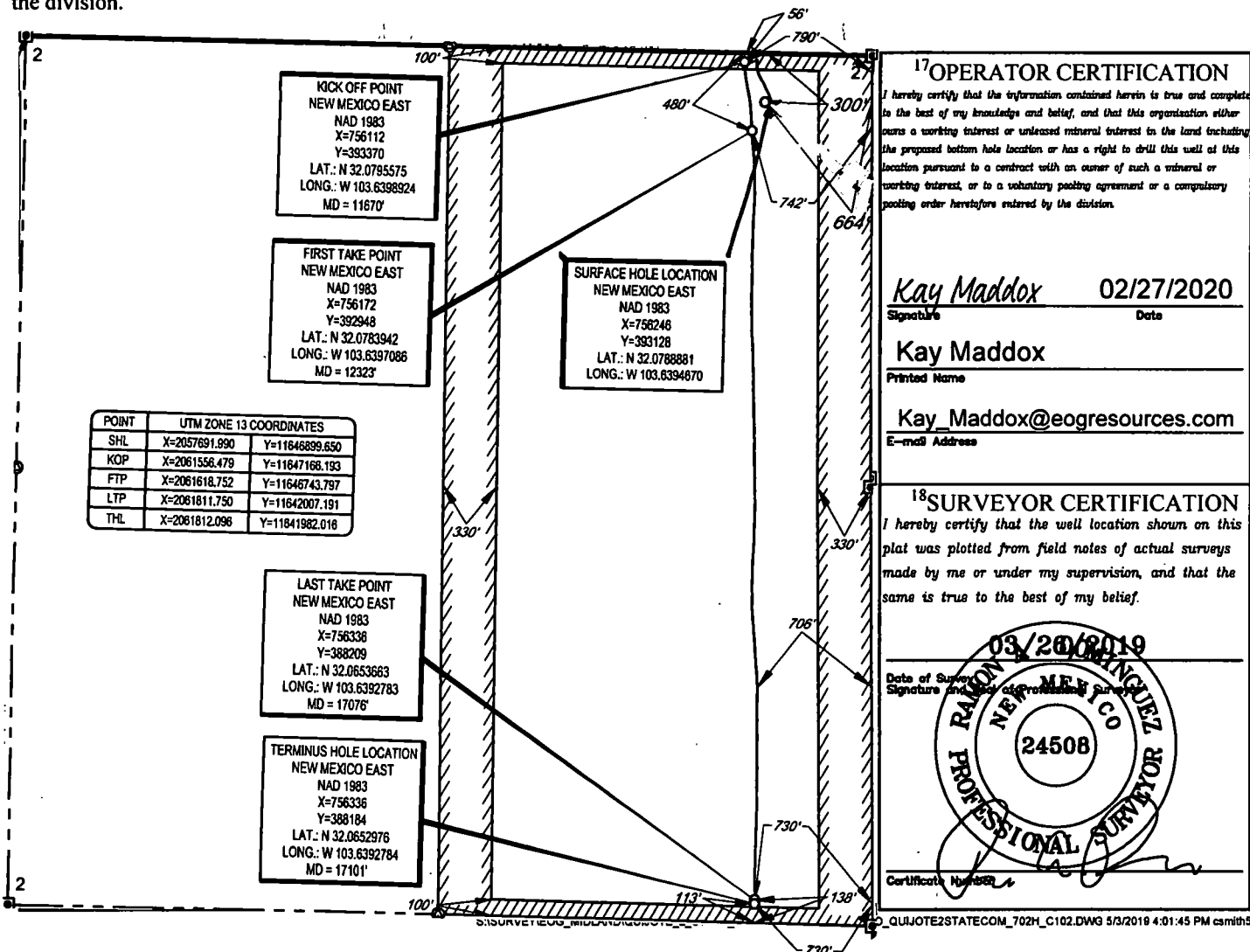
UL or lot no.	Section	Township	Range	Lot Idn	Feet from the	North/South line	Feet from the	East/West line	County
A	2	26-S	32-E	-	300'	NORTH	664'	EAST	LEA

¹¹Bottom Hole Location If Different From Surface

UL or lot no.	Section	Township	Range	Lot Idn	Feet from the	North/South line	Feet from the	East/West line	County
P	2	26-S	32-E	-	113'	SOUTH	730'	EAST	LEA

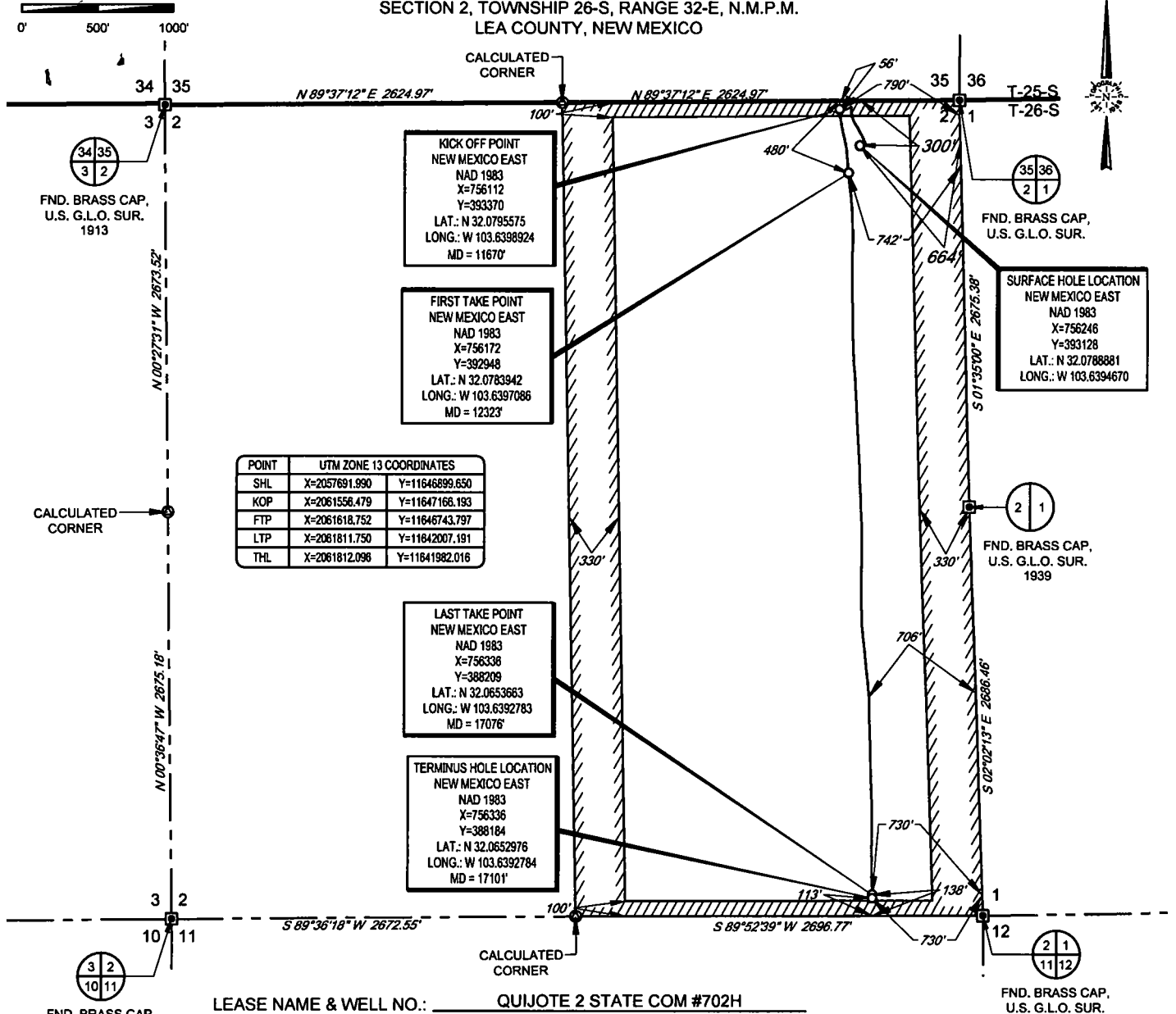
¹² Dedicated Acres 320.00	¹³ Joint or Infill	¹⁴ Consolidation Code	¹⁵ Order No.
--	-------------------------------	----------------------------------	-------------------------

No allowable will be assigned to this completion until all interests have been consolidated or a non-standard unit has been approved by the division.



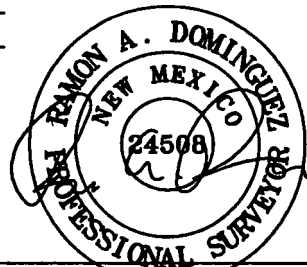
SCALE: 1" = 1000'

SECTION 2, TOWNSHIP 26-S, RANGE 32-E, N.M.P.M.
LEA COUNTY, NEW MEXICO



TOPOGRAPHIC
LOYALTY INNOVATION LEGACY

1400 EVERMAN PARKWAY, Ste. 148 • FT. WORTH, TEXAS 76140
TELEPHONE: (817) 744-7512 • FAX: (817) 744-7554
2803 NORTH BIG SPRING • MIDLAND, TEXAS 79705
TELEPHONE: (432) 682-1853 OR (800) 767-1853 • FAX (432) 682-1743
WWW.TOPOGRAPHIC.COM



Ramon A. Dominguez, P.S. No. 24508
JANUARY 06, 2020

EOG resources, Inc.

QUIJOTE 2 STATE COM #702H AS-COMPLETE	REVISION:	NOTES: 1. ORIGINAL DOCUMENT SIZE: 8.5" X 11" 2. ALL BEARINGS, DISTANCES, AND COORDINATE VALUES CONTAINED HEREIN ARE GRID BASED UPON THE NEW MEXICO COORDINATE SYSTEM OF 1983, EAST ZONE, U.S. SURVEY FEET. 3. THIS WELL LOCATION SHOWN HEREON HAS BEEN SURVEYED ON THE GROUND UNDER MY SUPERVISION AND PREPARED ACCORDING TO THE EVIDENCE FOUND AT THE TIME OF SURVEY, AND DATA PROVIDED BY EOG RESOURCES, INC. THIS CERTIFICATION IS MADE AND LIMITED TO THOSE PERSONS OR ENTITIES SHOWN ON THE FACE OF THIS PLAT AND IS NON-TRANSFERABLE. THIS SURVEY IS CERTIFIED FOR THIS TRANSACTION ONLY.
DATE: 01/07/2020		
FILE:AD QUIJOTE 2 STATE COM 731H		
DRAWN BY: JLS		
SHEET: 1 OF 1		

Intent ☐ As Drilled ☒

API #
30-025-46024

Operator Name:
EOG RESOURCES, INC

Property Name:
QUIJOTE 2 STATE COM

Well Number
702H

Kick Off Point (KOP)

UL A	Section 2	Township 26S	Range 32E	Lot	Feet 56	From N/S NORTH	Feet 790	From E/W EAST	County LEA
Latitude 32.0795575					Longitude 103.6398924				NAD 1983

First Take Point (FTP)

UL A	Section 2	Township 26S	Range 32E	Lot	Feet 480	From N/S NORTH	Feet 742	From E/W EAST	County LEA
Latitude 32.0783942					Longitude 103.6397086				NAD 1983

Last Take Point (LTP)

UL P	Section 2	Township 26S	Range 32E	Lot	Feet 138	From N/S SOUTH	Feet 730	From E/W EAST	County LEA
Latitude 32.0653663					Longitude 103.6392783				NAD 1983

Is this well the defining well for the Horizontal Spacing Unit?

☒

Is this well an infill well?

☐

If infill is yes please provide API if available, Operator Name and well number for Defining well for Horizontal Spacing Unit.

API #
30-025-46028

Operator Name:
EOG RESOURCES, INC

Property Name:
QUIJOTE 2 STATE COM

Well Number
#713H

KZ 06/29/2018