

District I  
1625 N. French Dr., Hobbs, NM 88240  
Phone: (575) 393-6161 Fax: (575) 393-0720  
District II  
811 S. First St., Artesia, NM 88210  
Phone: (575) 748-1283 Fax: (575) 748-9720  
District III  
1000 Rio Brazos Road, Aztec, NM 87410  
Phone: (505) 334-6178 Fax: (505) 334-6170  
District IV  
1220 S. St. Francis Dr., Santa Fe, NM 87505  
Phone: (505) 476-3460 Fax: (505) 476-3462

State of New Mexico  
Energy, Minerals & Natural Resources  
Department  
OIL CONSERVATION DIVISION  
1220 South St. Francis Dr.  
Santa Fe, NM 87505

**HOBBS OCD**

FEB 20 2020

**RECEIVED**

FORM C-102  
Revised August 1, 2011  
Submit one copy to appropriate  
District Office

☐ AMENDED REPORT

**WELL LOCATION AND ACREAGE DEDICATION PLAT**

<sup>1</sup> API Number 30-025-46229	<sup>2</sup> Pool Code 98180	<sup>3</sup> Pool Name WC025 G09 S253309P; UPPER WOLFCAMP
<sup>4</sup> Property Code 325949	<sup>5</sup> Property Name VALIANT 24 FED COM	
<sup>7</sup> OGRID No. 7377	<sup>8</sup> Operator Name EOG RESOURCES, INC.	<sup>6</sup> Well Number #706H  <sup>9</sup> Elevation 3458'

<sup>10</sup>Surface Location

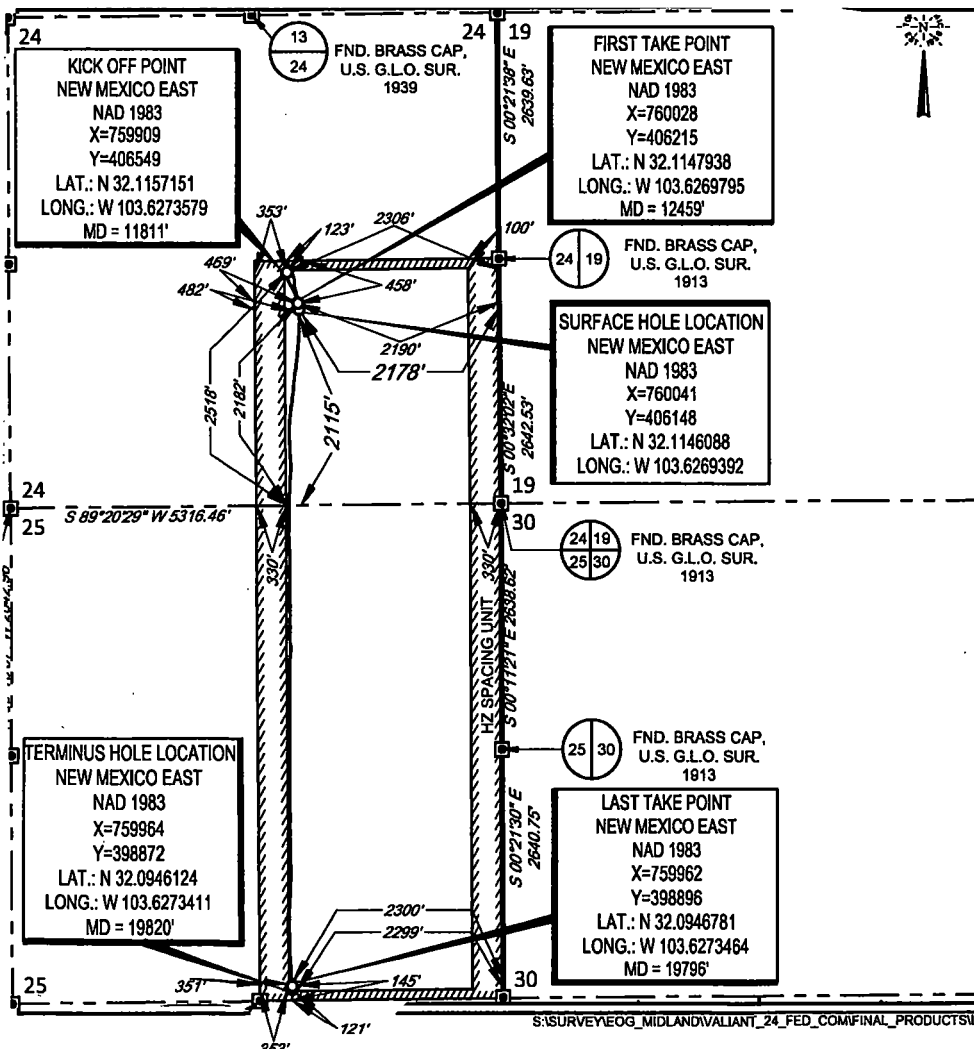
UL or lot no.	Section	Township	Range	Lot Idn	Feet from the	North/South line	Feet from the	East/West line	County
J	24	25-S	32-E	-	2115'	SOUTH	2178'	EAST	LEA

<sup>11</sup>Bottom Hole Location If Different From Surface

UL or lot no.	Section	Township	Range	Lot Idn	Feet from the	North/South line	Feet from the	East/West line	County
0	25	25-S	32-E	-	121'	SOUTH	2299'	EAST	LEA

<sup>12</sup> Dedicated Acres 480.00	<sup>13</sup> Joint or Infill	<sup>14</sup> Consolidation Code	<sup>15</sup> Order No.
---	-------------------------------	----------------------------------	-------------------------

No allowable will be assigned to this completion until all interests have been consolidated or a non-standard unit has been approved by the division.



<sup>17</sup>OPERATOR CERTIFICATION

I hereby certify that the information contained herein is true and complete to the best of my knowledge and belief, and that this organization either owns a working interest or leased mineral interest in the land including the proposed bottom hole location or has a right to drill this well at this location pursuant to a contract with an owner of such a mineral or working interest, or to a voluntary pooling agreement or a compulsory pooling order heretofore entered by the division.

Kay Maddox 02/19/2020  
Signature Date

Kay Maddox  
Printed Name

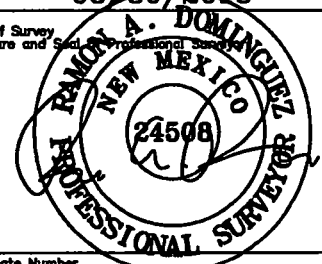
Kay Maddox@eogresources.com  
E-mail Address

<sup>18</sup>SURVEYOR CERTIFICATION

I hereby certify that the well location shown on this plat was plotted from field notes of actual surveys made by me or under my supervision, and that the same is true to the best of my belief.

08/30/2018

Date of Survey  
Signature and Seal of Professional Surveyor



Certificate Number

**HOBBS OCD**Intent ☐ As Drilled ☐ XXX

FEB 20 2020

API #  
30-025-46229**RECEIVED**Operator Name:  
EOG RESOURCES, INCProperty Name:  
VALIANT 24 FEDERAL COMWell Number  
706H

## Kick Off Point (KOP)

UL J	Section 24	Township 25S	Range 32E	Lot	Feet 2518	From N/S SOUTH	Feet 2306	From E/W EAST	County LEA
Latitude 32.1157151					Longitude 103.6273579			NAD 1983	

## First Take Point (FTP)

UL J	Section 24	Township 25S	Range 32E	Lot	Feet 2182	From N/S SOUTH	Feet 2190	From E/W EAST	County LEA
Latitude 32.1147938					Longitude 103.6269795			NAD 1983	

## Last Take Point (LTP)

UL O	Section 25	Township 25S	Range 32E	Lot	Feet 145	From N/S SOUTH	Feet 2300	From E/W EAST	County LEA
Latitude 32.0946781					Longitude 103.6273464			NAD 1983	

Is this well the defining well for the Horizontal Spacing Unit?

☐ NO

Is this well an infill well?

☐ YES

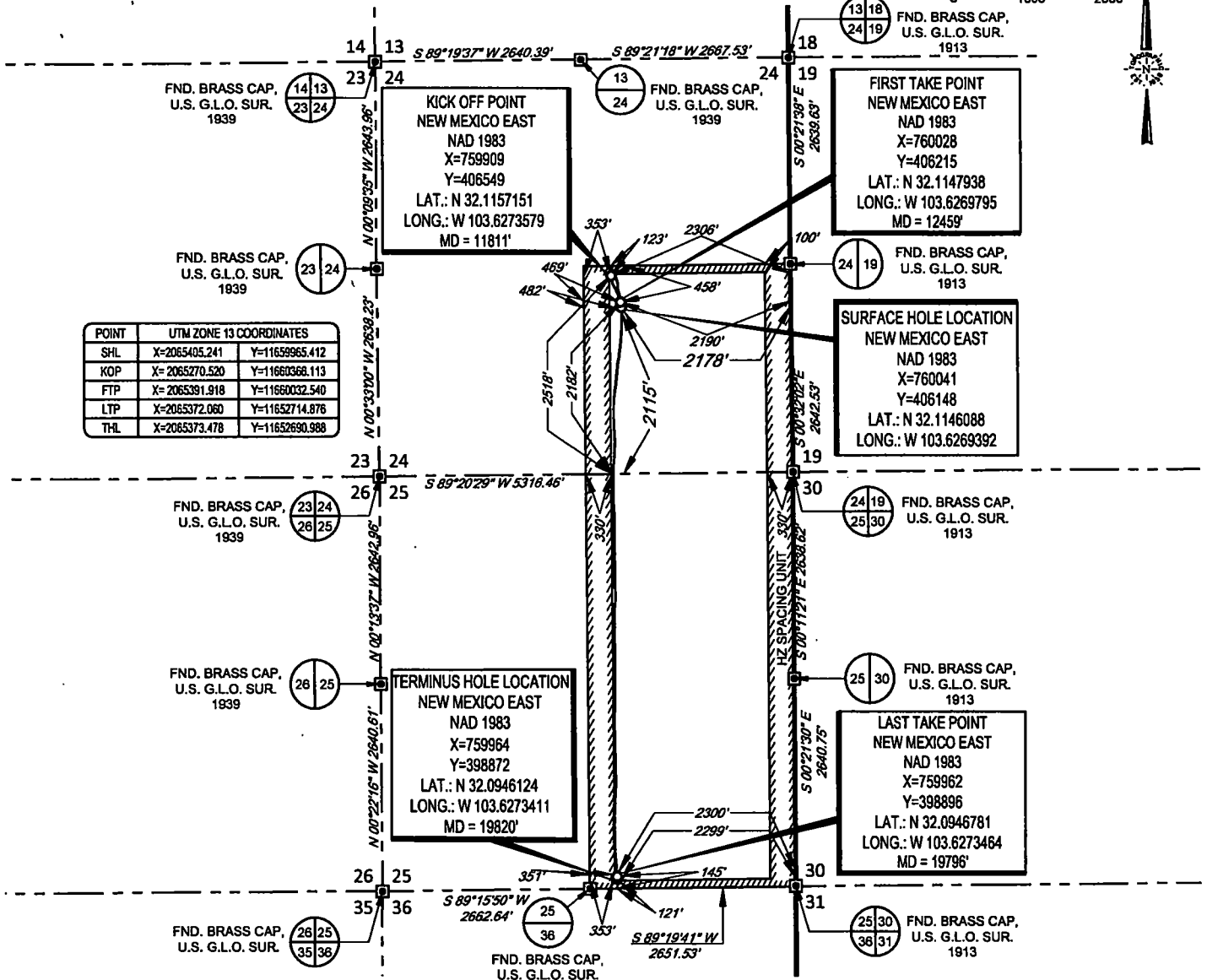
If infill is yes please provide API if available, Operator Name and well number for Defining well for Horizontal Spacing Unit.

API #  
30-025-46231Operator Name:  
EOG RESOURCES, INCProperty Name:  
VALIANT 24 FEDERAL COMWell Number  
#728H

KZ 06/29/2018

SECTION 24, TOWNSHIP 25-S, RANGE 32-E, N.M.P.M.  
LEA COUNTY, NEW MEXICO

SCALE: 1" = 2000'

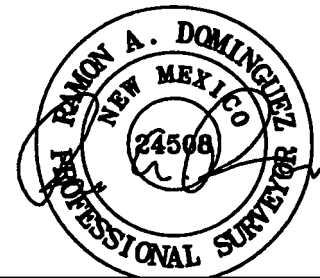


LEASE NAME & WELL NO.: VALIANT 24 FED COM 706H  
SECTION 24 TWP 25-S RGE 32-E SURVEY N.M.P.M.  
COUNTY LEA STATE NM ELEVATION 3454'  
DESCRIPTION 2115' FSL & 2178' FEL



**TOPOGRAPHIC**  
LOYALTY INNOVATION LEGACY

1400 EVERMAN PARKWAY, Ste. 146 • FT. WORTH, TEXAS 76140  
TELEPHONE: (817) 744-7512 • FAX (817) 744-7554  
2903 NORTH BIG SPRING • MIDLAND, TEXAS 79705  
TELEPHONE: (432) 682-1653 OR (800) 767-1653 • FAX (432) 682-1743  
WWW.TOPOGRAPHIC.COM



Ramon A. Dominguez, P.S. No. 24508



VALIANT 24 FED COM 706H AS-COMPLETE	REVISION:	<b>NOTES:</b> 1. ORIGINAL DOCUMENT SIZE: 8.5" X 11" 2. ALL BEARINGS, DISTANCES, AND COORDINATE VALUES CONTAINED HEREIN ARE GRID BASED UPON THE NEW MEXICO COORDINATE SYSTEM OF 1983, EAST ZONE, U.S. SURVEY FEET. 3. THIS WELL LOCATION SHOWN HEREON HAS BEEN SURVEYED ON THE GROUND UNDER MY SUPERVISION AND PREPARED ACCORDING TO THE EVIDENCE FOUND AT THE TIME OF SURVEY, AND DATA PROVIDED BY EOG RESOURCES, INC. THIS CERTIFICATION IS MADE AND LIMITED TO THOSE PERSONS OR ENTITIES SHOWN ON THE FACE OF THIS PLAT AND IS NON-TRANSFERABLE. THIS SURVEY IS CERTIFIED FOR THIS TRANSACTION ONLY.
DATE: 01/15/2020		
FILE:AD_VALIANT_24_FED_COM_706H		
DRAWN BY: JLS		
SHEET: 1 OF 1		