

District I
1625 N. French Dr., Hobbs, NM 88240
Phone: (575) 393-6161 Fax: (575) 393-0720
District II
811 S. First St., Artesia, NM 88210
Phone: (575) 748-1283 Fax: (575) 748-9720
District III
1000 Rio Brazos Road, Aztec, NM 87410
Phone: (505) 334-6178 Fax: (505) 334-6170
District IV
1220 S. St. Francis Dr., Santa Fe, NM 87505
Phone: (505) 476-3460 Fax: (505) 476-3462

State of New Mexico
Energy, Minerals & Natural Resources Department
OIL CONSERVATION DIVISION
1220 South St. Francis Dr.
Santa Fe, NM 87505

Form C-102
Revised August 1, 2011
Submit one copy to appropriate
District Office

☐ AMENDED REPORT

HOBBS OCD
MAR 04 2020
RECEIVED

WELL LOCATION AND ACREAGE DEDICATION

¹ API Number 30-025-46404	² Pool Code 97293	³ Pool Name Ojo Chiso; Bone Spring, South
⁴ Property Code 326135	⁵ Property Name WINNEBAGO 30 STATE COM	⁶ Well Number 504H
⁷ OGRID No. 372165	⁸ Operator Name CENTENNIAL RESOURCE PRODUCTION, LLC	⁹ Elevation 3463.4'

¹⁰ Surface Location

UL or lot no.	Section	Township	Range	Lot Idn	Feet from the	North/South line	Feet from the	East/West line	County
N	30	22S	35E		300	SOUTH	1995	WEST	LEA

¹¹ Bottom Hole Location If Different From Surface

UL or lot no.	Section	Township	Range	Lot Idn	Feet from the	North/South line	Feet from the	East/West line	County
C	30	22S	35E		94	NORTH	2287	WEST	LEA
¹² Dedicated Acres 160	¹³ Joint or Infill	¹⁴ Consolidation Code	¹⁵ Order No.						

No allowable will be assigned to this completion until all interests have been consolidated or a non-standard unit has been approved by the division.

NAD 83 (AS-DRILLED SHL)
LATITUDE = 32°21'22.49" (32.356248°)
LONGITUDE = 103°24'31.37" (103.408715°)
STATE PLANE NAD 83 (N.M. EAST)
Y: 494567.96' X: 826849.66'
UTM, NAD 83 (ZONE 13)
Y: 11748786.19' X: 2131654.45'

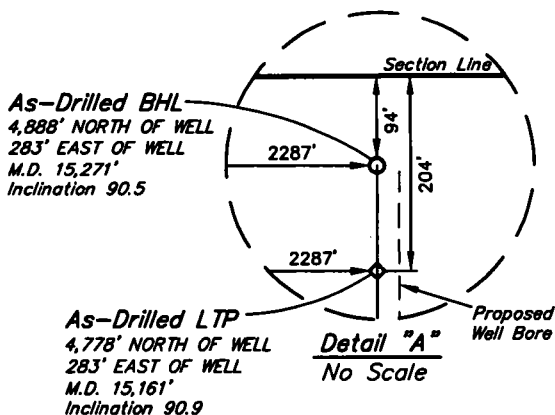
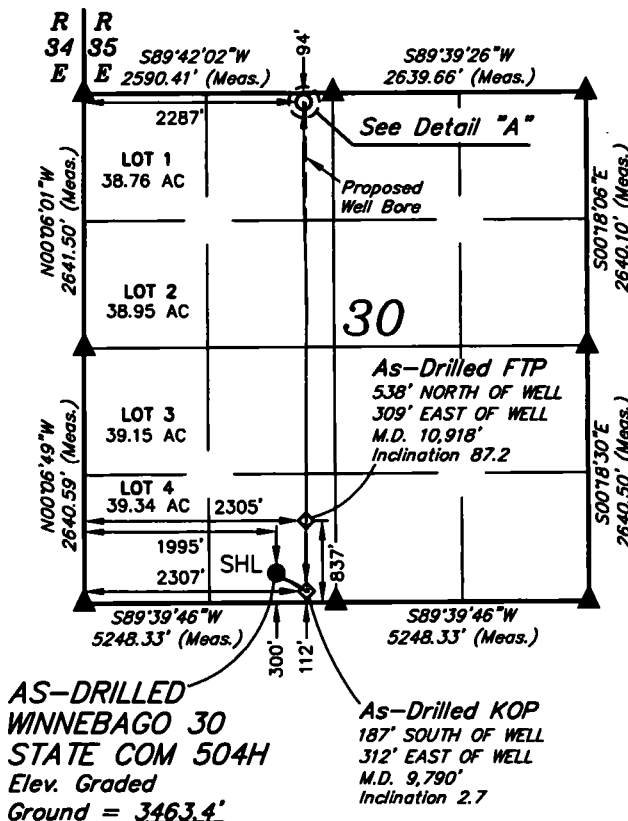
NAD 83 (AS-DRILLED KOP)
LATITUDE = 32°21'20.63" (32.355731°)
LONGITUDE = 103°24'27.75" (103.407707°)
STATE PLANE NAD 83 (N.M. EAST)
Y: 494382.45' X: 827162.58'
UTM, NAD 83 (ZONE 13)
Y: 11748602.66' X: 2131968.49'

NAD 83 (AS-DRILLED FTP)
LATITUDE = 32°21'27.81" (32.357724°)
LONGITUDE = 103°24'27.75" (103.407707°)
STATE PLANE NAD 83 (N.M. EAST)
Y: 495107.58' X: 827156.33'
UTM, NAD 83 (ZONE 13)
Y: 11749327.65' X: 2131957.73'

NAD 83 (AS-DRILLED LTP)
LATITUDE = 32°22'09.75" (32.369376°)
LONGITUDE = 103°24'27.83" (103.407730°)
STATE PLANE NAD 83 (N.M. EAST)
Y: 499346.37' X: 827112.65'
UTM, NAD 83 (ZONE 13)
Y: 11753565.35' X: 2131887.64'

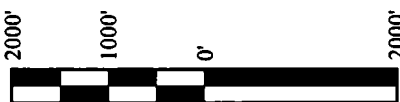
NAD 83 (AS-DRILLED BHL)
LATITUDE = 32°22'10.84" (32.369678°)
LONGITUDE = 103°24'27.83" (103.407729°)
STATE PLANE NAD 83 (N.M. EAST)
Y: 499456.35' X: 827111.89'
UTM, NAD 83 (ZONE 13)
Y: 11753675.31' X: 2131886.20'

APPROXIMATE WELL BORE
DISTANCE FROM FTP TO LTP
SECTION 30 4,240.17'



- = AS-DRILLED SURFACE HOLE LOCATION
- ◇ = AS-DRILLED KOP/FTP/LTP
- = AS-DRILLED BOTTOM HOLE LOCATION
- ▲ = SECTION CORNER LOCATED
- ★ = PRODUCING WELLS

NOTE:
• Distances referenced on plat to section lines are perpendicular.
• Basis of bearing is a Transverse Mercator Projection with a Central Meridian of W103°53'00" (NAD 83)
• Wellbore data provided by Centennial Resource Production, LLC.



SCALE
DRAWN BY: R.J. 02-26-20

¹⁷ OPERATOR
CERTIFICATION

I hereby certify that the information contained herein is true and complete to the best of my knowledge and belief, and that this organization either owns a working interest or unleased mineral interest in the land including the proposed bottom hole location or has a right to drill this well at this location pursuant to a contract with an owner of such a mineral or working interest, or to a voluntary pooling agreement or a compulsory pooling order heretofore entered by the division.

Sarah

Digitally signed by Sarah Ferreyros
DN: cn=Sarah Ferreyros, c=US,
email=sarah.ferreyros@cddevinc.com
Date: 2020.03.03 15:43:00

Sarah Ferreyros
Printed Name
sarah.ferreyros
@cddevinc.com
E-mail Address

¹⁸ SURVEYOR
CERTIFICATION

I hereby certify that the well location shown on this plat was plotted from field notes of actual surveys made by me or under my supervision, and that the same is true and correct to the best of my belief.

December 17, 2019

Date of Survey
Signature and Seal of Professional Surveyor:



Certificate Number: