



**Additional data for EC transaction #498896 that would not fit on the form**

**32. Additional remarks, continued**

Description of lines within the approved 60' Corridor:

Same 1538' route as analyzed and approved in the Vaca Draw 20-17 Federal 31H APD.

1- 12" Buried steel Oil Bulk line

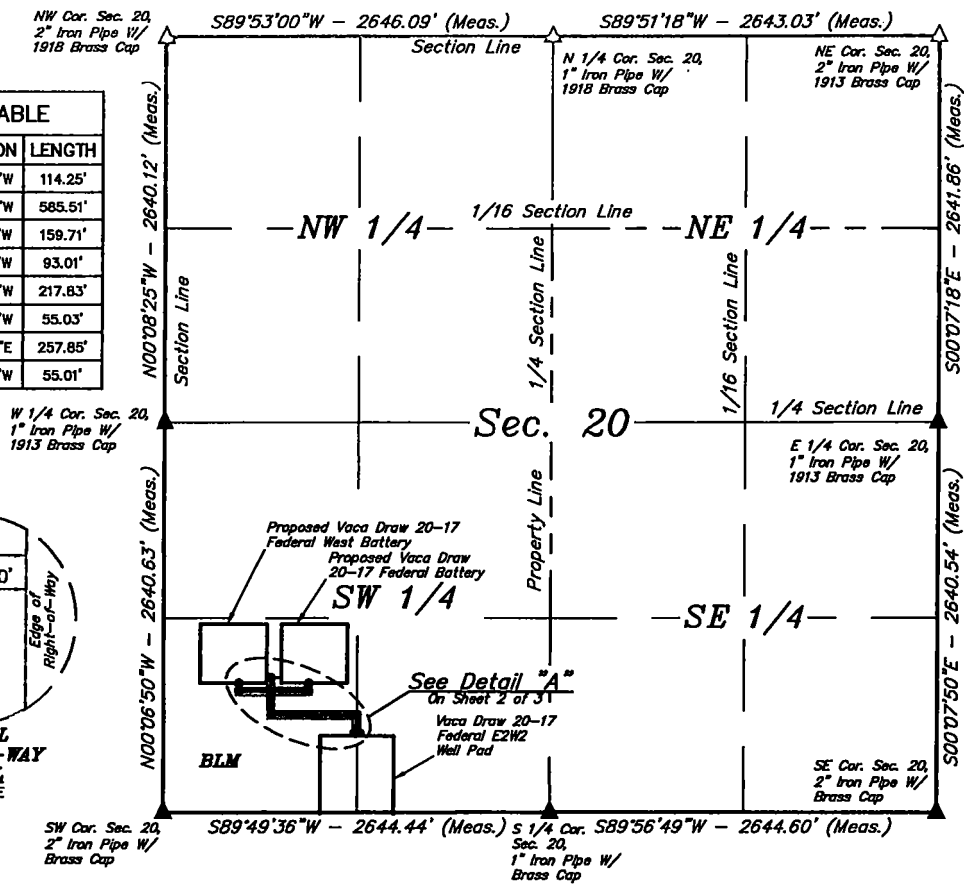
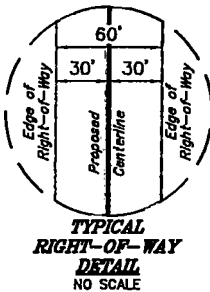
1- 12" Buried steel Gas Sales Bulk line

1- 12" Buried steel SWD line

1- 8" Buried Steel Gas lift line

There is no new surface disturbance.

LINE TABLE		
LINE	DIRECTION	LENGTH
L1	N00°10'23"W	114.25'
L2	S89°49'35"W	585.51'
L3	N00°10'18"W	159.71'
L4	N00°10'18"W	93.01'
L5	S89°49'42"W	217.83'
L6	N00°10'27"W	55.03'
L7	N89°48'22"E	257.85'
L8	N00°10'37"W	55.01'



BEGINNING OF FLOW LINE "A" BEARS  
N67°11'13"E 1430.77' FROM THE SOUTHWEST  
CORNER OF SECTION 20, T25S, R33E, N.M.P.M.

END OF FLOW LINE "A" BEARS N38°31'06"E  
1175.79' FROM THE SOUTHWEST CORNER OF  
SECTION 20, T25S, R33E, N.M.P.M.

BEGINNING OF FLOW LINE "B" BEARS  
N41°32'07"E 1104.72' FROM THE SOUTHWEST  
CORNER OF SECTION 20, T25S, R33E, N.M.P.M.

END OF FLOW LINE "B" BEARS N30°16'37"E  
1020.52' FROM THE SOUTHWEST CORNER OF  
SECTION 20, T25S, R33E, N.M.P.M.

BEGINNING OF FLOW LINE "C" BEARS  
N41°32'07"E 1104.72' FROM THE SOUTHWEST  
CORNER OF SECTION 20, T25S, R33E, N.M.P.M.

END OF FLOW LINE "C" BEARS N48°17'01"E  
1326.55' FROM THE SOUTHWEST CORNER OF  
SECTION 20, T25S, R33E, N.M.P.M.

ACREAGE / LENGTH TABLE "A"

	OWNERSHIP	FEET	RODS	ACRES
SEC. 20 (SW 1/4)	BLM	952.49	57.73	1.312

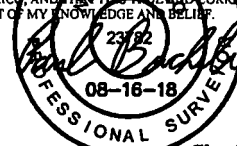
ACREAGE / LENGTH TABLE "B"

	OWNERSHIP	FEET	RODS	ACRES
SEC. 20 (SW 1/4)	BLM	272.86	16.54	0.376

ACREAGE / LENGTH TABLE "C"

	OWNERSHIP	FEET	RODS	ACRES
SEC. 20 (SW 1/4)	BLM	312.86	18.96	0.431

CERTIFICATE  
THIS IS TO CERTIFY THAT THIS EASEMENT PLAT AND  
THE ACTUAL SURVEY ON THE GROUND UPON WHICH IT  
IS BASED WERE PERFORMED BY ME OR UNDER MY  
DIRECT SUPERVISION, THAT I AM RESPONSIBLE FOR  
THIS SURVEY, THAT THIS SURVEY MEETS THE  
MINIMUM STANDARDS FOR SURVEYING IN NEW  
MEXICO, AND THAT IT IS TRUE AND CORRECT TO THE  
BEST OF MY KNOWLEDGE AND BELIEF.



▲ = SECTION CORNERS LOCATED.

NOTES:

- Basis of Bearings is a Transverse Mercator Projection with a Central Meridian of W103°53'00"

FILE: 64534-A1

Sheet 1 of 3

CIMAREX ENERGY CO.

VACA DRAW 20-17 FEDERAL  
FLOW LINE NETWORK ON BLM LANDS IN  
SECTION 20, T25S, R33E, N.M.P.M.  
LEA COUNTY, NEW MEXICO

SURVEYED BY	R.B., M.H.	08-02-18	SCALE
DRAWN BY	L.K.	08-16-18	1" = 1000'

Flow line & Gas Lift ROW Exhibit M & N



UELS, LLC  
Corporate Office \* 85 South 200 East  
Vernal, UT 84078 \* (435) 789-1017