

District I  
1625 N. French Dr., Hobbs, NM 88240  
Phone: (575) 393-6161 Fax: (575) 393-0720  
District II  
811 S. First St., Artesia, NM 88210  
Phone: (575) 748-1283 Fax: (575) 748-9720  
District III  
1000 Rio Brazos Road, Aztec, NM 87410  
Phone: (505) 334-6178 Fax: (505) 334-6170  
District IV  
1220 S. St. Francis Dr., Santa Fe, NM 87505  
Phone: (505) 476-3460 Fax: (505) 476-3462

State of New Mexico  
Energy, Minerals & Natural Resources  
Department  
OIL CONSERVATION DIVISION  
1220 South St. Francis Dr.  
Santa Fe, NM 87505

FORM C-102

Revised August 1, 2011

Submit one copy to appropriate

District Office

**HOBBS OCD**

MAR 03 2020

AMENDED REPORT

WELL LOCATION AND ACREAGE DEDICATION PLAT

<sup>1</sup> API Number <b>30-025-46027</b>	<sup>2</sup> Pool Code <b>98158</b>	<b>WC025 G09 S253236A; UPPER WOLFCAMP</b>
<sup>4</sup> Property Code <b>325727</b>	<sup>5</sup> Property Name <b>QUIJOTE 2 STATE COM</b>	
<sup>7</sup> OGRID No. <b>7377</b>	<sup>8</sup> Operator Name <b>EOG RESOURCES, INC.</b>	<sup>6</sup> Well Number <b>711H</b>
		<sup>9</sup> Elevation <b>3342'</b>

<sup>10</sup>Surface Location

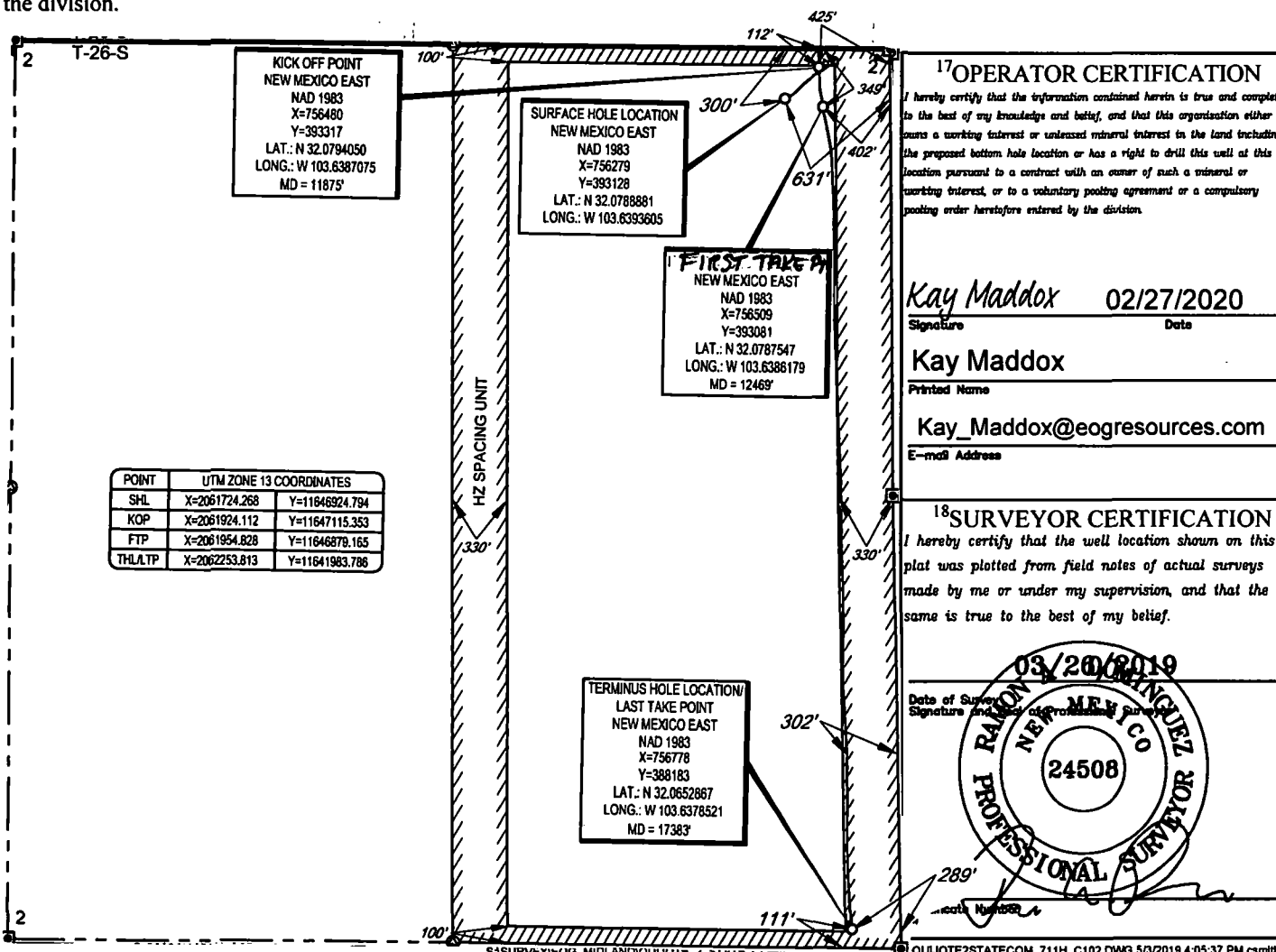
UL or lot no.	Section	Township	Range	Lot Idn	Feet from the	North/South line	Feet from the	East/West line	County
<b>A</b>	<b>2</b>	<b>26-S</b>	<b>32-E</b>	<b>-</b>	<b>300'</b>	<b>NORTH</b>	<b>631'</b>	<b>EAST</b>	<b>LEA</b>

<sup>11</sup>Bottom Hole Location If Different From Surface

UL or lot no.	Section	Township	Range	Lot Idn	Feet from the	North/South line	Feet from the	East/West line	County
<b>P</b>	<b>2</b>	<b>26-S</b>	<b>32-E</b>	<b>-</b>	<b>111'</b>	<b>SOUTH</b>	<b>289'</b>	<b>EAST</b>	<b>LEA</b>

<sup>12</sup> Dedicated Acres <b>320.00</b>	<sup>13</sup> Joint or Infill	<sup>14</sup> Consolidation Code	<sup>15</sup> Order No.
--	-------------------------------	----------------------------------	-------------------------

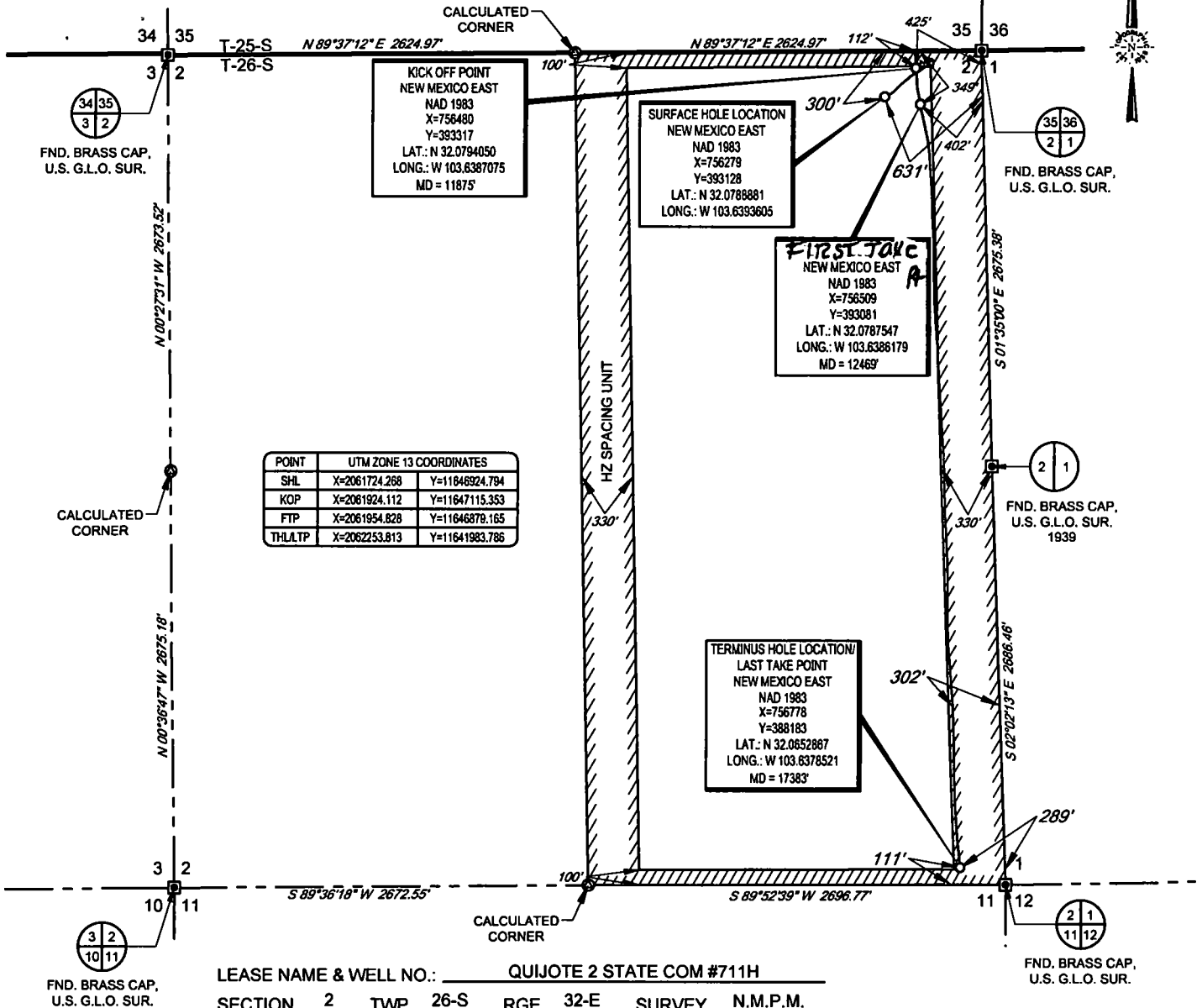
No allowable will be assigned to this completion until all interests have been consolidated or a non-standard unit has been approved by the division.



SCALE: 1" = 1000'

0' 500' 1000'

SECTION 2, TOWNSHIP 26-S, RANGE 32-E, N.M.P.M.  
LEA COUNTY, NEW MEXICO



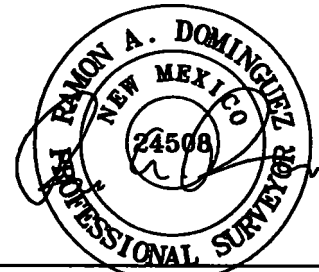
POINT	UTM ZONE 13 COORDINATES	
SHL	X=2061724.288	Y=11646924.794
KOP	X=2061924.112	Y=11647115.353
FTP	X=2061954.828	Y=11646878.165
THL/TP	X=2062253.813	Y=11641983.786

LEASE NAME & WELL NO.: QUIJOTE 2 STATE COM #711H  
SECTION 2 TWP. 26-S RGE 32-E SURVEY N.M.P.M.  
COUNTY LEA STATE NM ELEVATION 3340'  
DESCRIPTION 300' FNL & 631' FEL



**TOPOGRAPHIC**  
LOYALTY INNOVATION LEGACY

1400 EVERMAN PARKWAY, Ste. 146 • FT. WORTH, TEXAS 76140  
TELEPHONE: (817) 744-7512 • FAX: (817) 744-7554  
2803 NORTH BIG SPRING • MIDLAND, TEXAS 79705  
TELEPHONE: (432) 682-1653 OR (800) 787-1653 • FAX: (432) 682-1743  
WWW.TOPOGRAPHIC.COM



Ramon A. Dominguez, P.S. No. 24508

**eo resources, inc.**

QUIJOTE 2 STATE COM  
#711H  
AS-COMPLETED

DATE: 01/15/2020  
FILE: AD QUIJOTE 2 STATE COM 711H  
DRAWN BY: TRG  
SHEET: 1 OF 1

REVISION:

NOTES:

1. ORIGINAL DOCUMENT SIZE: 8.5" X 11"
2. ALL BEARINGS, DISTANCES, AND COORDINATE VALUES CONTAINED HEREIN ARE GRID BASED UPON THE NEW MEXICO COORDINATE SYSTEM OF 1983, EAST ZONE, U.S. SURVEY FEET.
3. THIS WELL LOCATION SHOWN HEREON HAS BEEN SURVEYED ON THE GROUND UNDER MY SUPERVISION AND PREPARED ACCORDING TO THE EVIDENCE FOUND AT THE TIME OF SURVEY, AND DATA PROVIDED BY EOG RESOURCES, INC. THIS CERTIFICATION IS MADE AND LIMITED TO THOSE PERSONS OR ENTITIES SHOWN ON THE FACE OF THIS PLAT AND IS NON-TRANSFERABLE. THIS SURVEY IS CERTIFIED FOR THIS TRANSACTION ONLY.

Intent ☐ As Drilled ☒

API #  
30-025-46027

Operator Name: EOG RESOURCES, INC	Property Name: QUIJOTE 2 STATE COM	Well Number 711H
--------------------------------------	---------------------------------------	---------------------

Kick Off Point (KOP)

UL A	Section 2	Township 26S	Range 32E	Lot	Feet 112	From N/S NORTH	Feet 425	From E/W EAST	County LEA
Latitude 32.0794050					Longitude 103.6387075				NAD 1983

First Take Point (FTP)

UL A	Section 2	Township 26S	Range 32E	Lot	Feet 349	From N/S NORTH	Feet 402	From E/W EAST	County LEA
Latitude 32.0787547					Longitude 103.6386179				NAD 1983

Last Take Point (LTP)

UL P	Section 2	Township 26S	Range 32E	Lot	Feet 111	From N/S SOUTH	Feet 289	From E/W EAST	County LEA
Latitude 32.0652867					Longitude 103.6378521				NAD 1983

Is this well the defining well for the Horizontal Spacing Unit? ☐

Is this well an infill well? ☒

If infill is yes please provide API if available, Operator Name and well number for Defining well for Horizontal Spacing Unit.

API #  
30-025-46028

Operator Name: EOG RESOURCES, INC	Property Name: QUIJOTE 2 STATE COM	Well Number #713H
--------------------------------------	---------------------------------------	----------------------

KZ 06/29/2018