

District I
1625 N. French Dr., Hobbs, NM 88240
Phone: (575) 393-6161 Fax: (575) 393-0720
District II
811 S. First St., Artesia, NM 88210
Phone: (575) 748-1283 Fax: (575) 748-9720
District III
1000 Rio Brazos Road, Aztec, NM 87413
Phone: (505) 334-6178 Fax: (505) 334-6170
District IV
1220 S. St. Francis Dr., Santa Fe, NM 87505
Phone: (505) 476-3460 Fax: (505) 476-3462

HOBBS OCD
RECEIVED
MAR 10 2020

State of New Mexico
Energy, Minerals & Natural Resources
Department
OIL CONSERVATION DIVISION
1220 South St. Francis Dr.
Santa Fe, NM 87505

BLM/F/S

FORM C-102

Revised August 1, 2011

Submit one copy to appropriate

District Office

☐ AMENDED REPORT

WELL LOCATION AND ACREAGE DEDICATION PLAT

¹ API Number 30-025- 46969		² Pool Code 98094	³ Pool Name Bobcat Draw; Upper Wolfcamp
⁴ Property Code 39180	⁵ Property Name VACA 24 FED COM		⁶ Well Number 710H
⁷ OGRID No. 7377	⁸ Operator Name EOG RESOURCES, INC.		⁹ Elevation 3331'

¹⁰Surface Location

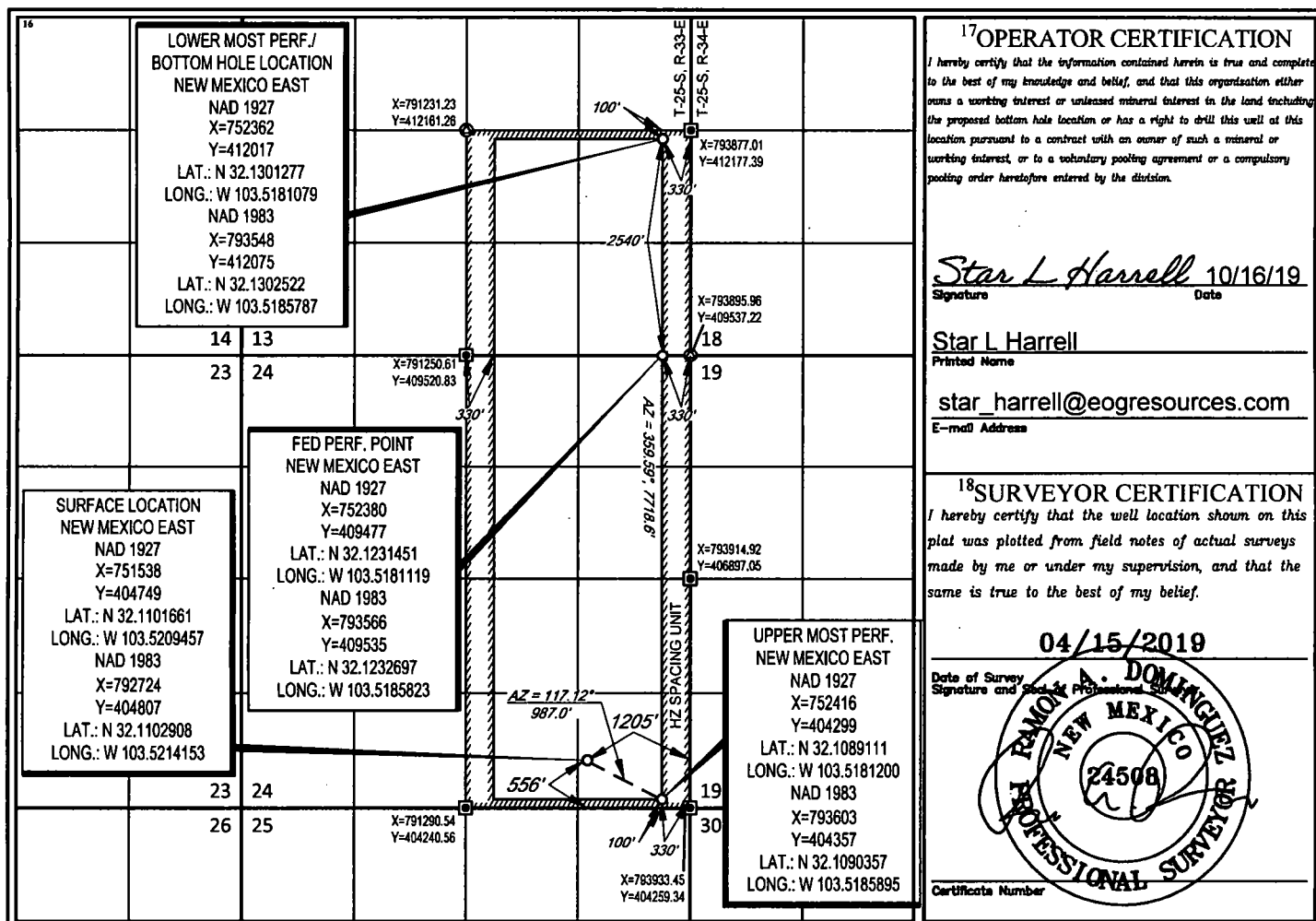
UL or lot no.	Section	Township	Range	Lot Idn	Feet from the	North/South line	Feet from the	East/West line	County
P	24	25-S	33-E	-	556'	SOUTH	1205'	EAST	LEA

¹¹Bottom Hole Location If Different From Surface

UL or lot no.	Section	Township	Range	Lot Idn	Feet from the	North/South line	Feet from the	East/West line	County
I	13	25-S	33-E	-	2537'	SOUTH	330'	EAST	LEA

¹² Dedicated Acres 480.00	¹³ Joint or Infill	¹⁴ Consolidation Code	¹⁵ Order No.
--	-------------------------------	----------------------------------	-------------------------

No allowable will be assigned to this completion until all interests have been consolidated or a non-standard unit has been approved by the division.



Intent ☒ As Drilled ☐

API # 30-025- 46969			
Operator Name: EOG Resources, Inc.		Property Name: Vaca 24 Fed Com	Well Number 710H

Kick Off Point (KOP)

UL P	Section 24	Township 25S	Range 33E	Lot	Feet 556	From N/S S	Feet 1205	From E/W E	County Lea
Latitude N 32.1102908					Longitude W -103.5214153				NAD 83

First Take Point (FTP)

UL P	Section 24	Township 25S	Range 33E	Lot	Feet 100	From N/S S	Feet 330	From E/W E	County Lea
Latitude N 32.1090357					Longitude W -103.5185895				NAD 83

Last Take Point (LTP)

UL I	Section 13	Township 25S	Range 33E	Lot	Feet 2537	From N/S S	Feet 330	From E/W E	County Lea
Latitude N 32.1302522					Longitude W -103.5185787				NAD 83

Is this well the defining well for the Horizontal Spacing Unit? ☐ NO

Is this well an infill well? ☐ YES

If infill is yes please provide API if available, Operator Name and well number for Defining well for Horizontal Spacing Unit.

API # 30-025-			
Operator Name: EOG Resources, Inc.		Property Name: Vaca 24 Fed Com	Well Number 708H

KZ 06/29/2018