

DISTRICT I
1825 N. French Dr., Hobbs, NM 88240

DISTRICT II
1301 W. Grand Avenue, Artesia, NM 88210

DISTRICT III
1000 Rio Brazos Rd., Aztec, NM 87410

DISTRICT IV
1220 S. St. Francis Dr., Santa Fe, NM 87505

State of New Mexico
Energy, Minerals and Natural Resources Department

Form C-102
Revised October 12, 2005

Submit to Appropriate District Office
State Lease - 4 Copies
Fee Lease - 3 Copies

OIL CONSERVATION DIVISION
1220 South St. Francis Dr.
Santa Fe, New Mexico 87505

AMENDED REPORT

WELL LOCATION AND ACREAGE DEDICATION PLAT

API Number 30-025-38596	Pool Code 7900 ✓	Pool Name BRUNSON-DRINKARD-ABO SOUTH
Property Code 9268	Property Name JONES "B" ✓	Well Number 1
OGRID No. 017733	Operator Name PIERCE PRODUCTION CO.	Elevation 3356'

Surface Location

UL or lot No.	Section	Township	Range	Lot Idn	Feet from the	North/South line	Feet from the	East/West line	County
L	6	22 S	38 E		1980	SOUTH	330	WEST	LEA

Bottom Hole Location If Different From Surface

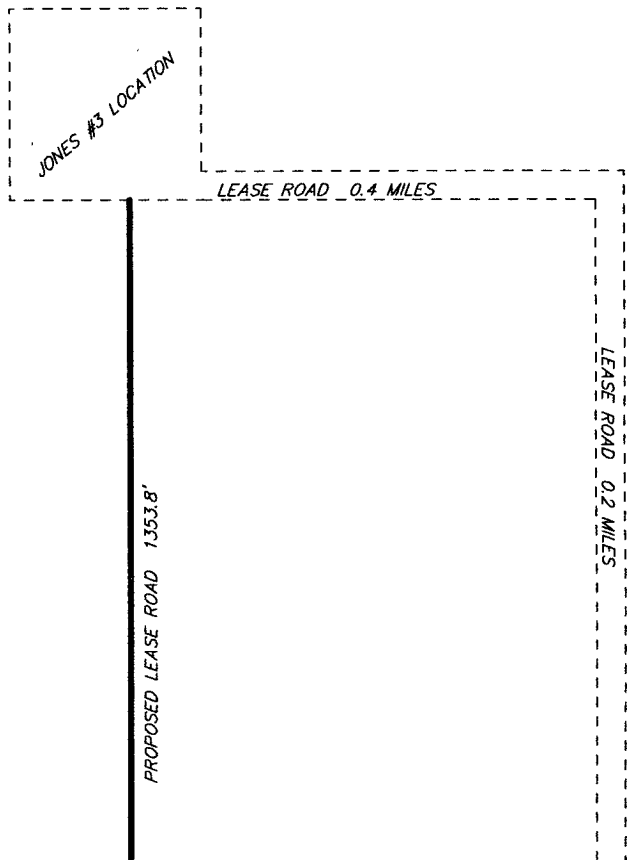
UL or lot No.	Section	Township	Range	Lot Idn	Feet from the	North/South line	Feet from the	East/West line	County

Dedicated Acres 40 ✓	Joint or Infill	Consolidation Code	Order No.
-------------------------	-----------------	--------------------	-----------

NO ALLOWABLE WILL BE ASSIGNED TO THIS COMPLETION UNTIL ALL INTERESTS HAVE BEEN CONSOLIDATED OR A NON-STANDARD UNIT HAS BEEN APPROVED BY THE DIVISION

<p>Lot - N32°25'08.73" Long - W103°06'25.34" SPC- N.: 518365.602 E.: 919750.488 (NAD-83)</p>	<p>OPERATOR CERTIFICATION</p> <p>I hereby certify that the information contained herein is true and complete to the best of my knowledge and belief, and that this organization either owns a working interest or unleased mineral interest in the land including the proposed bottom hole location pursuant to a contract with an owner of such a mineral or working interest, or to a voluntary pooling agreement or a compulsory pooling order heretofore entered by the division.</p> <p><i>Joe T. Janica</i> Signature Date Joe T. Janica 10/15/07 Printed Name</p>
	<p>SURVEYOR CERTIFICATION</p> <p>I hereby certify that the well location shown on this plat was plotted from field notes of actual surveys made by me or under my supervision, and that the same is true and correct to the best of my belief.</p> <p>AUGUST 21, 2007</p> <p>Date Surveyed Signature & Seal of Professional Surveyor NEW MEXICO W.O. No. 18462 Certificate No. 7977 Gory L. Jones BASIN SURVEYS</p>

SECTION 6, TOWNSHIP 22 SOUTH, RANGE 38 EAST, N.M.P.M.,
LEA COUNTY, NEW MEXICO.



150' NORTH
OFF SET
3353.9'

PIERCE PRODUCTION CO.
JONES "6" #1
Elev. - 3356'

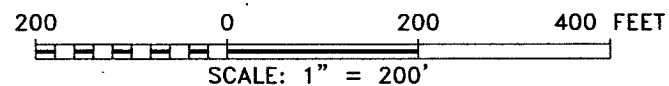
150' WEST
OFF SET □
3354.9'

150' EAST
OFF SET □
3355.2'

Lat.-N 32°25'08.73"
Long-W 103°06'25.34"
(NAD-83)

123.0'

150' SOUTH
OFF SET
3355.6'

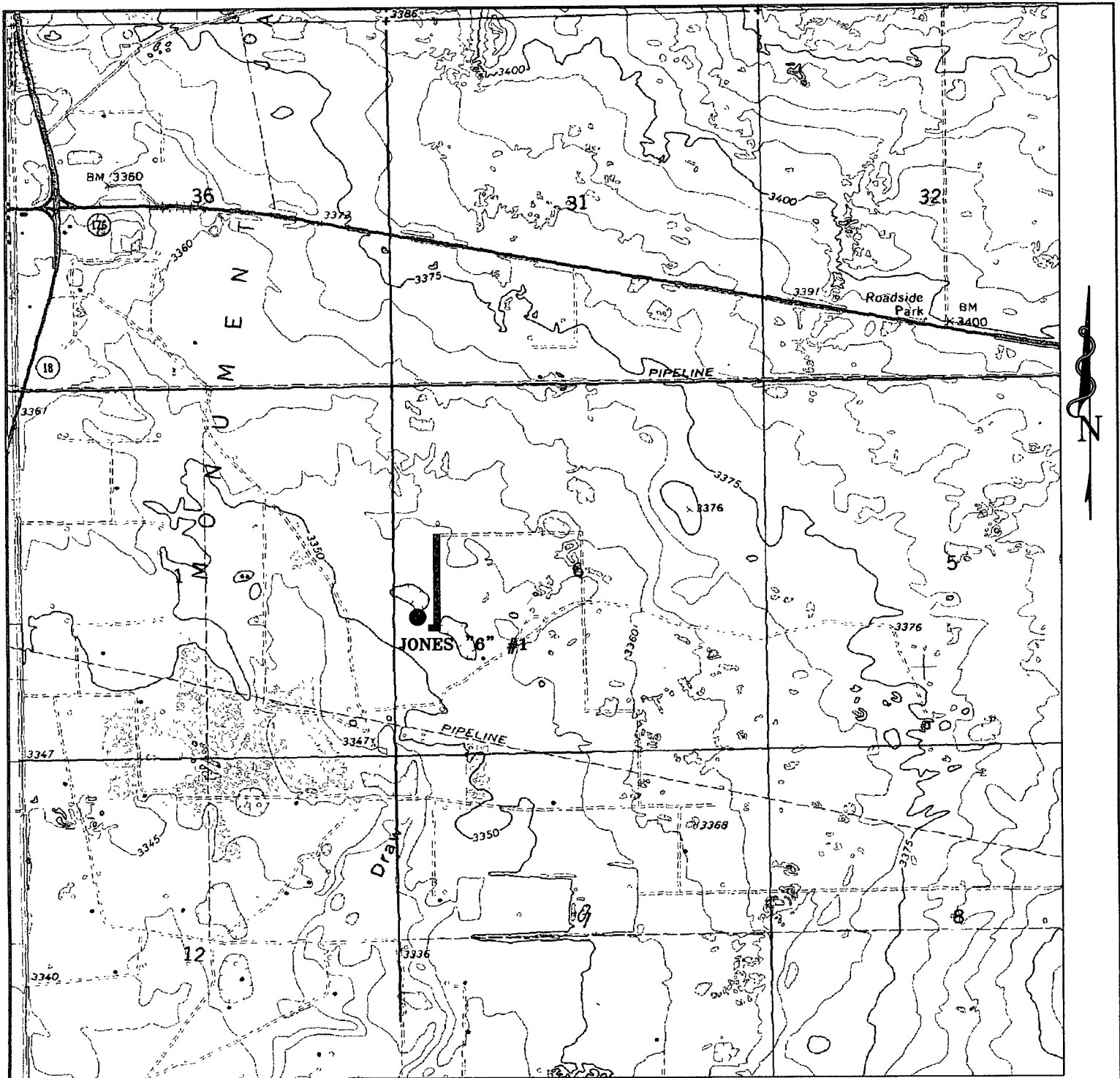


Directions to Location:

FROM MILE MARKER 31 ON STATE HWY 18; GO SOUTH 0.2 MILES TO CO. RD. 17 (DRINKARD), GO SOUTHEAST ON CO. RD. 17 FOR 0.6 MILES TO LEASE ROAD, ON LEASE ROAD GO 1.6 MILES TO LEASE ROAD, ON LEASE ROAD TO NORTH 0.2 MILES TO LEASE ROAD, ON LEASE ROAD GO WEST 0.4 MILES TO JONES #3 LOCATION AND PROPOSED LEASE ROAD.

BASIN SURVEYS P.O. BOX 1786 - HOBBS, NEW MEXICO

PIERCE PRODUCTION CO.	
REF: JONES "6" #1 / WELL PAD TOPO	
THE JONES "6" #1 LOCATED 1980'	
FROM THE SOUTH LINE AND 330' FROM THE WEST LINE OF	
SECTION 6, TOWNSHIP 22 SOUTH, RANGE 38 EAST,	
N.M.P.M., LEA COUNTY, NEW MEXICO.	
W.O. Number: 18462	Drawn By: J. M. SMALL
Date: 08-22-2007	Disk: 18462W JMS
Survey Date: 08-21-2007	Sheet 1 of 1 Sheets



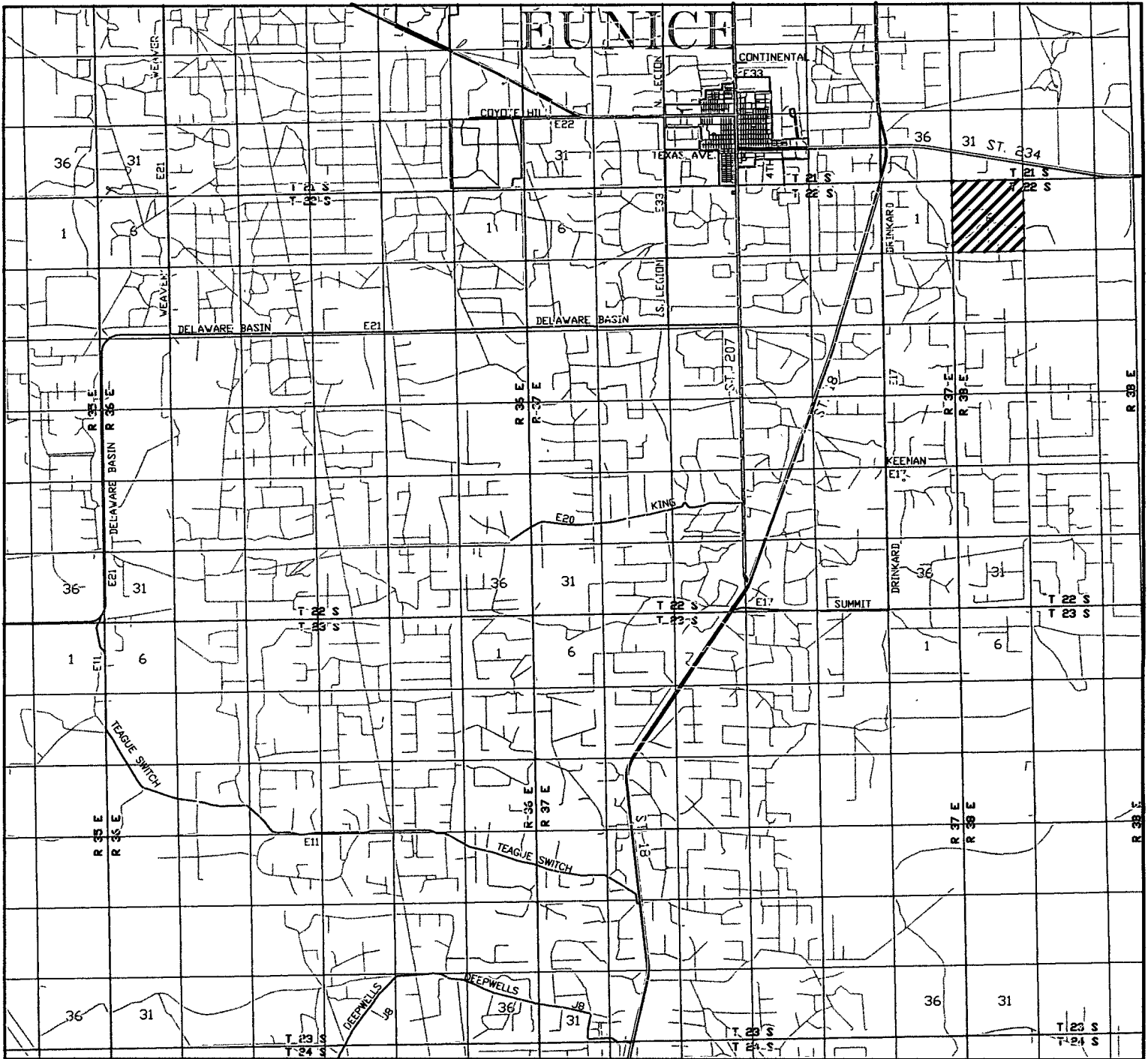
JONES "6" #1
 Located at 1980' FSL AND 330' FWL
 Section 6, Township 22 South, Range 38 East,
 N.M.P.M., Lea County, New Mexico.

basin surveys
 focused on excellence
 in the oilfield

P.O. Box 1786
 1120 N. West County Rd.
 Hobbs, New Mexico 88241
 (505) 393-7316 - Office
 (505) 392-3074 - Fax
 basinsurveys.com

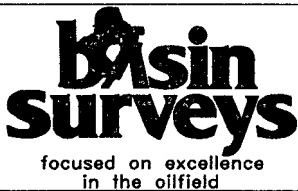
W.O. Number:	18462T
Survey Date:	08-21-2007
Scale:	1" = 2000'
Date:	08-22-2007

**PIERCE
 PRODUCTION
 CO.**



JONE "6" #1

Located at 1980' FSL AND 330' FWL
 Section 6, Township 22 South, Range 38 East,
 N.M.P.M., Eddy County, New Mexico.



P.O. Box 1786
 1120 N. West County Rd.
 Hobbs, New Mexico 88241
 (505) 393-7316 - Office
 (505) 392-3074 - Fax
 basinsurveys.com

W.O. Number: JMS 18462TR

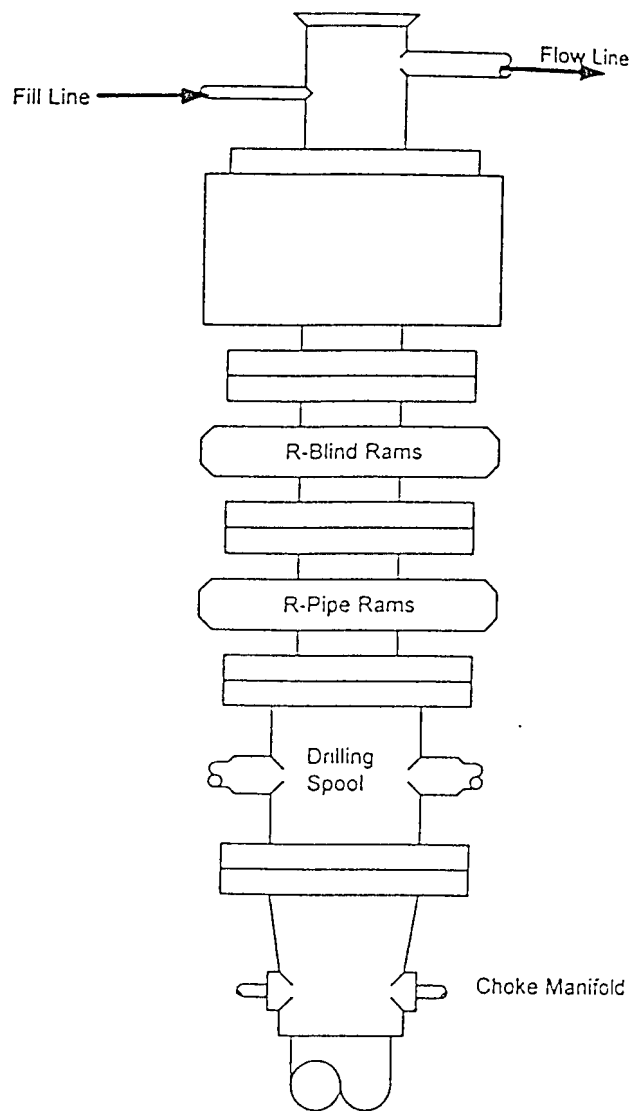
Survey Date: 08-21-2007

Scale: 1" = 2 MILES

Date: 08-22-2007

**PIERCE
 PRODUCTION
 CO.**

BLOWOUT PREVENTER SYSTEM



Type 900 Series
3000 psi WP

Choke Manifold Assembly for 3M WP System

