

District I  
PO Box 1980, Hobbs, NM 88241-1980

District II  
811 South First, Artesia, NM 88210

District III  
1000 Rio Brazos Rd., Aztec, NM 87410

District IV  
2040 South Pacheco, Santa Fe, NM 87505

State of New Mexico  
Energy, Minerals & Natural Resources Department

OIL CONSERVATION DIVISION  
2040 South Pacheco  
Santa Fe, NM 87505

Form C-101  
Revised October 18, 1994  
Instructions on back  
Submit to Appropriate District Office  
State Lease - 6 Copies  
Fee Lease - 5 Copies

☐ AMENDED REPORT

APPLICATION FOR PERMIT TO DRILL, RE-ENTER, DEEPEN, PLUGBACK, OR ADD A ZONE

<sup>1</sup> Operator Name and Address Nearburg Producing Company 3300 N A St., Bldg 2, Suite 120 Midland, TX 79705		<sup>2</sup> OGRID Number 015742
		<sup>3</sup> API Number 30-025-36143
<sup>4</sup> Property Code 31925	<sup>5</sup> Property Name Lee Ann 22 State	<sup>6</sup> Well No. 1

<sup>7</sup>Surface Location

UL or lot no.	Section	Township	Range	Lot Idn	Feet from the	North/South line	Feet from the	East/West Line	County
1	22	17S	37E		1900	South	530	East	Lea

<sup>8</sup>Proposed Bottom Hole Location If Different From Surface

UL or lot no.	Section	Township	Range	Lot Idn	Feet from the	North/South line	Feet from the	East/West Line	County
1	22	17S	37E		1500	South	530	East	Lea
<sup>9</sup> Proposed Pool 1 Humble City; Undesignated; Strawn SW					<sup>10</sup> Proposed Pool 2				

<sup>11</sup> Work Type Code N	<sup>12</sup> Well Type Code O	<sup>13</sup> Cable/Rotary R	<sup>14</sup> Lease Type Code S	<sup>15</sup> Ground Level Elevation 3734
<sup>16</sup> Multiple No	<sup>17</sup> Proposed Depth 12000	<sup>18</sup> Formation Strawn	<sup>19</sup> Contractor Patterson	<sup>20</sup> Spud Date 04-01-2003

<sup>21</sup>Proposed Casing and Cement Program

Hole Size	Casing Size	Casing weight/foot	Setting Depth	Sacks of Cement	Estimated TOC
17-1/2	13-3/8	54	500	525	Circ
11	8-5/8	32	4200	1300	Circ
7-7/8	5-1/2	17 & 20	12000	500	Surface

<sup>22</sup>Describe the proposed program. If this application is to DEEPEN or PLUG BACK give the data on the present productive zone and proposed new productive zone. Describe the blowout prevention program, if any. Use additional sheets if necessary.

Propose to drill the well to a sufficient depth to evaluate the Strawn formation. After reaching TD, logs will be run and casing set if the evaluation is positive. Perforate, test and stimulation as necessary to establish production.

Acreage dedication is 80 acres; E/2 of SE/4 of Section 22.

Permit Expires 1 Year From Approval  
Date Unless Drilling Underway

<sup>23</sup>I hereby certify that the information given above is true and complete to the best of my knowledge and belief.

Signature:

Printed name: Sarah Jordan

Title: Production Analyst

Date: 02-03-2003

Phone: 915/686-8235 ex 203

OIL CONSERVATION DIVISION

Approved By:

Title:

PETROLEUM ENGINEER

Approval Date:

Expiration Date:

Conditions of Approval  
Attached

FEB 05 2003

DISTRICT I  
P.O. Box 1980, Hobbs, NM 88241-1980

DISTRICT II  
P.O. Drawer DD, Artesia, NM 88211-0719

DISTRICT III  
1000 Rio Brazos Rd., Aztec, NM 87410

DISTRICT IV  
P.O. BOX 2088, SANTA FE, N.M. 87504-2088

State of New Mexico  
Energy, Minerals and Natural Resources Department

OIL CONSERVATION DIVISION  
P.O. Box 2088  
Santa Fe, New Mexico 87504-2088

Form C-102  
Revised February 10, 1994  
Submit to Appropriate District Office  
State Lease - 4 Copies  
Fee Lease - 3 Copies

WELL LOCATION AND ACREAGE DEDICATION PLAT

☐ AMENDED REPORT

API Number 30-025-36143	Pool Code 96558	Pool Name Humble City; Undesignated; Strawn, SW
Property Code 31925	Property Name LEE ANN 22 STATE	Well Number 1
OGRID No. 015742	Operator Name NEARBURG PRODUCING COMPANY	Elevation 3728'

Surface Location

UL or lot No.	Section	Township	Range	Lot Idn	Feet from the	North/South line	Feet from the	East/West line	County
1	22	17-S	37-E		1900	SOUTH	530	EAST	LEA

Bottom Hole Location If Different From Surface

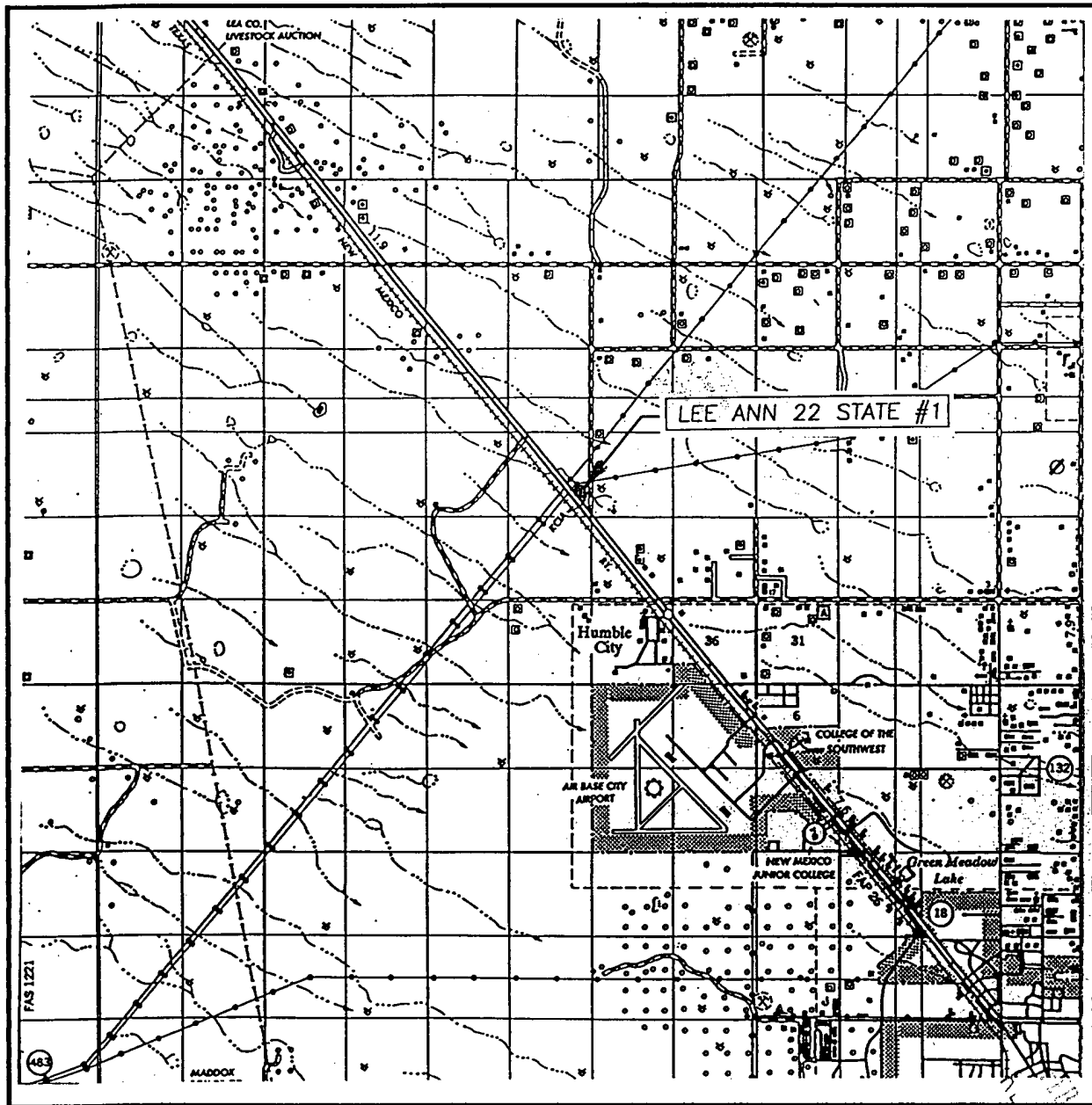
UL or lot No.	Section	Township	Range	Lot Idn	Feet from the	North/South line	Feet from the	East/West line	County
1	22	17-S	37-E		1500	SOUTH	530	EAST	LEA

Dedicated Acres 80	Joint or Infill	Consolidation Code	Order No.
-----------------------	-----------------	--------------------	-----------

NO ALLOWABLE WILL BE ASSIGNED TO THIS COMPLETION UNTIL ALL INTERESTS HAVE BEEN CONSOLIDATED  
OR A NON-STANDARD UNIT HAS BEEN APPROVED BY THE DIVISION

<div><p>SURFACE GEODETIC COORDINATES NAD 27 NME Y = 663099.1 X = 838370.1 LAT. 32°49'05.16"N LONG. 103°13'54.97"W</p><p>BOTTOM HOLE Y = 662699.2 X = 838374.9</p></div> <div><p>SURFACE 530'</p><p>B.H. 1900' 1500'</p></div>	<p>OPERATOR CERTIFICATION</p> <p>I hereby certify the the information contained herein is true and complete to the best of my knowledge and belief.</p> <p><i>S. Jordan</i> Signature Sarah Jordan Printed Name Production Analyst Title 2.3.03 Date</p> <p>SURVEYOR CERTIFICATION</p> <p>I hereby certify that the well location shown on this plat was plotted from field notes of actual surveys made by me or under my supervision and that the same is true and correct to the best of my belief.</p> <p>JANUARY 23, 2003</p> <p>Date Surveyed Signature &amp; Seal of Professional Surveyor Professional Surveyor RONALD J. EIDSON 03-11-0083 Certificate No. 3239 12641</p>
---	--

# VICINITY MAP



SCALE: 1" = 2 MILES  
COPIES  
ED

SEC. 22 TWP. 17-S RGE. 37-E

SURVEY N.M.P.M.

COUNTY LEA

DESCRIPTION 1900' FSL & 530' FEL

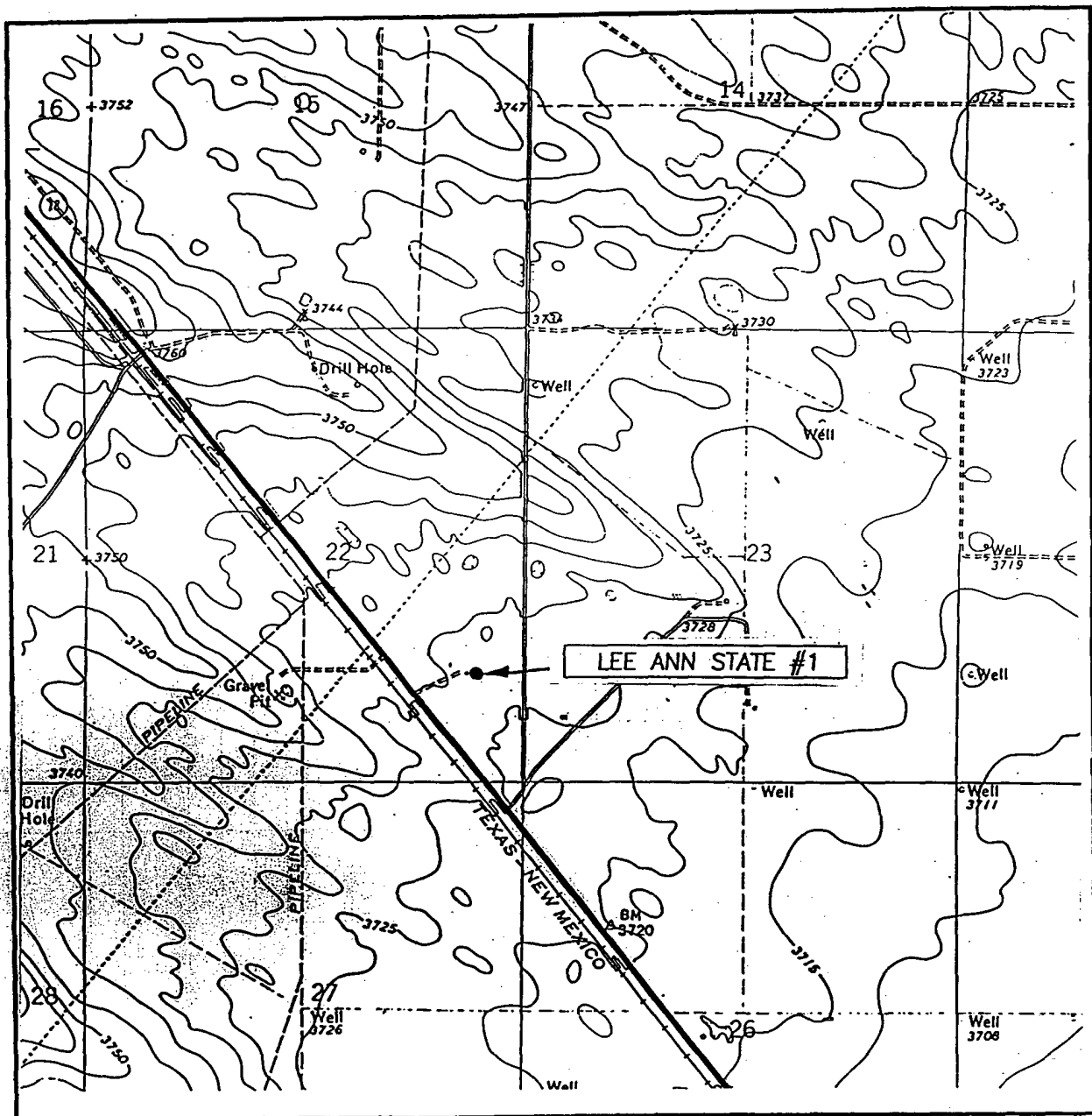
ELEVATION 3728'

OPERATOR NEARBURG PRODUCING COMPANY

LEASE LEE ANN 22 STATE

**JOHN WEST SURVEYING**  
**HOBBS, NEW MEXICO**  
**(505) 393-3117**

# LOCATION VERIFICATION MAP



SCALE: 1" = 2000'

CONTOUR INTERVAL: 5'  
HUMBLE CITY, N.M.

SEC. 22 TWP. 17-S RGE. 37-E

SURVEY N.M.P.M.

COUNTY LEA

DESCRIPTION 1900' FSL & 530' FEL

ELEVATION 3728'

OPERATOR NEARBURG PRODUCING COMPANY

LEASE LEE ANN 22 STATE

U.S.G.S. TOPOGRAPHIC MAP  
HUMBLE CITY, N.M.

JOHN WEST SURVEYING  
HOBBS, NEW MEXICO  
(505) 393-3117

RECEIVED  
Hobbs  
000

# BOPE SCHEMATIC

Rotating Head (Optional)  
Drilling Nipple option  
must include a fill-up  
line. Do not use kill line  
for fill up.

