

Submit To Appropriate District Office State Lease - 6 copies Fee Lease - 5 copies District I 1625 N French Dr., Hobbs, NM 88201 District II 1301 W Grand Avenue, Artesia, NM 88210 District III 1000 Rio Brazos Rd., Aztec, NM 87410 District IV 1220 S. St. Francis Dr., Santa Fe, NM 87505	State of New Mexico Energy, Minerals and Natural Resources RECEIVED Oil Conservation Division 1220 South St. Francis Dr. Santa Fe, NM 87505 MAY 01 2008 HOBBS OGD	Form C-105 Revised June 10, 2003 WELL API NO. 30-025-38665 ✓ 5. Indicate Type of Lease STATE <input type="checkbox"/> FEE <input checked="" type="checkbox"/> State Oil & Gas Lease No. N/A					
WELL COMPLETION OR REPERFORATION REPORT AND LOG							
1a. Type of Well. OIL WELL <input checked="" type="checkbox"/> GAS WELL <input type="checkbox"/> DRY <input type="checkbox"/> OTHER _____ b. Type of Completion: NEW <input checked="" type="checkbox"/> WORK <input type="checkbox"/> DEEPEN <input type="checkbox"/> PLUG <input type="checkbox"/> DIFF. WELL OVER _____ BACK RESVR <input type="checkbox"/> OTHER _____	7. Lease Name or Unit Agreement Name House ✓						
2. Name of Operator Apache Corporation ✓	8. Well No #002						
3. Address of Operator 6120 S Yale Ave, Suite 1500 Tulsa, OK 74136-4224	9. Pool name or Wildcat House; Blinebry, South ✓						
4. Well Location Unit Letter <u>D</u> <u>990</u> Feet From The <u>North</u> Line and <u>990</u> Feet From The <u>West</u> Line Section <u>13</u> Township <u>20S</u> Range <u>38E</u> NMPM <u>Lea</u> County							
10. Date Spudded 03/09/2008	11. Date T.D. Reached 03/16/2008	12. Date Compl. (Ready to Prod.) 04/18/2008	13. Elevations (DF& RKB, RT, GR, etc.) 3557' GR	14. Elev. Casinghead			
15. Total Depth 7300'	16. Plug Back T.D. 6434' RBP	17. If Multiple Compl. How Many Zones? NA	18. Intervals Drilled By X	Rotary Tools Cable Tools			
19. Producing Interval(s), of this completion - Top, Bottom, Name 6022-6274' (Blinebry)			20. Was Directional Survey Made No				
21. Type Electric and Other Logs Run DLL-ML, SGR, CSITT, CN/PD/SGR			22. Was Well Cored No				
23. CASING RECORD (Report all strings set in well)							
CASING SIZE	WEIGHT LB./FT.	DEPTH SET	HOLE SIZE	CEMENTING RECORD	AMOUNT PULLED		
8-5/8"	24#	1595'	12-1/4"	750 sx / circ			
5-1/2"	17#	7300'	7-7/8"	1400 sx / TOC 186' CBL			
24. LINER RECORD			25. TUBING RECORD				
SIZE	TOP	BOTTOM	SACKS CEMENT	SCREEN	SIZE	DEPTH SET	PACKER SET
					2-7/8"	6315'	
26. Perforation record (interval, size, and number) Blinebry: 6022-6274' (2 JSPF, 45 holes) Tubb: 6510-6732' (2 JSPF, 45 holes) RBP @ 6434' Drinkard: 6940-7038' (2 JSPF, 45 holes) RBP @ 6857'			27. ACID, SHOT, FRACTURE, CEMENT, SQUEEZE, ETC.				
			DEPTH INTERVAL	AMOUNT AND KIND MATERIAL USED			
			6022-6274	2Kgal 15%HCl, 40Kgal SS-25 + 82K# 20/40			
			6510-6732	2Kgal 15%HCl, 40Kgal SS-25 + 82K# 20/40			
			6940-7038	2Kgal 15%HCl, 42Kgal SS-35 + 62K# 20/40			
28. PRODUCTION							
Date First Production 04/18/2008		Production Method (Flowing, gas lift, pumping - Size and type pump) Pumping - Rod Pump			Well Status (Prod. or Shut-in) Producing		
Date of Test 04/28/2008	Hours Tested 24 hours	Choke Size	Prod'n For Test Period	Oil - Bbl 39	Gas - MCF 93	Water - Bbl. 126	Gas - Oil Ratio 2385
Flow Tubing Press	Casing Pressure	Calculated 24-Hour Rate	Oil - Bbl	Gas - MCF	Water - Bbl.	Oil Gravity - API - (Corr.) 37.4	
29. Disposition of Gas (Sold, used for fuel, vented, etc) Sold						Test Witnessed By Apache Corporation	
30. List Attachments Deviation Report, C-102, C-103, C-104 (Logs mailed 4/23/08)							
31. I hereby certify that the information shown on both sides of this form as true and complete to the best of my knowledge and belief							
Signature <i>Sophie Mackay</i>		Printed Name Sophie Mackay		Title Engineering Tech		Date 04/29/2008	
E-mail Address sophie.mackay@apachecorp.com							

State of New Mexico

Energy, Minerals and Natural Resources Department

DISTRICT I
1625 N. FRENCH DR., HOBBS, NM 88240

DISTRICT II
1301 W. GRAND AVENUE, ARTESIA, NM 88210

DISTRICT III
1000 Rio Brazos Rd., Aztec, NM 87410

DISTRICT IV
1220 S. ST. FRANCIS DR., SANTA FE, NM 87505

OIL CONSERVATION DIVISION
1220 SOUTH ST. FRANCIS DR.
Santa Fe, New Mexico 87505

Form C-102
Revised October 12, 2005
Submit to Appropriate District Office
State Lease - 4 Copies
Fee Lease - 3 Copies

WELL LOCATION AND ACREAGE DEDICATION PLAT

AMENDED REPORT

API Number 30-025-38665	Pool Code 33225	Pool Name House; Blinebry, South
Property Code 303218	Property Name HOUSE	Well Number 2
OGRID No. 873	Operator Name APACHE CORPORATION	Elevation 3557'

Surface Location

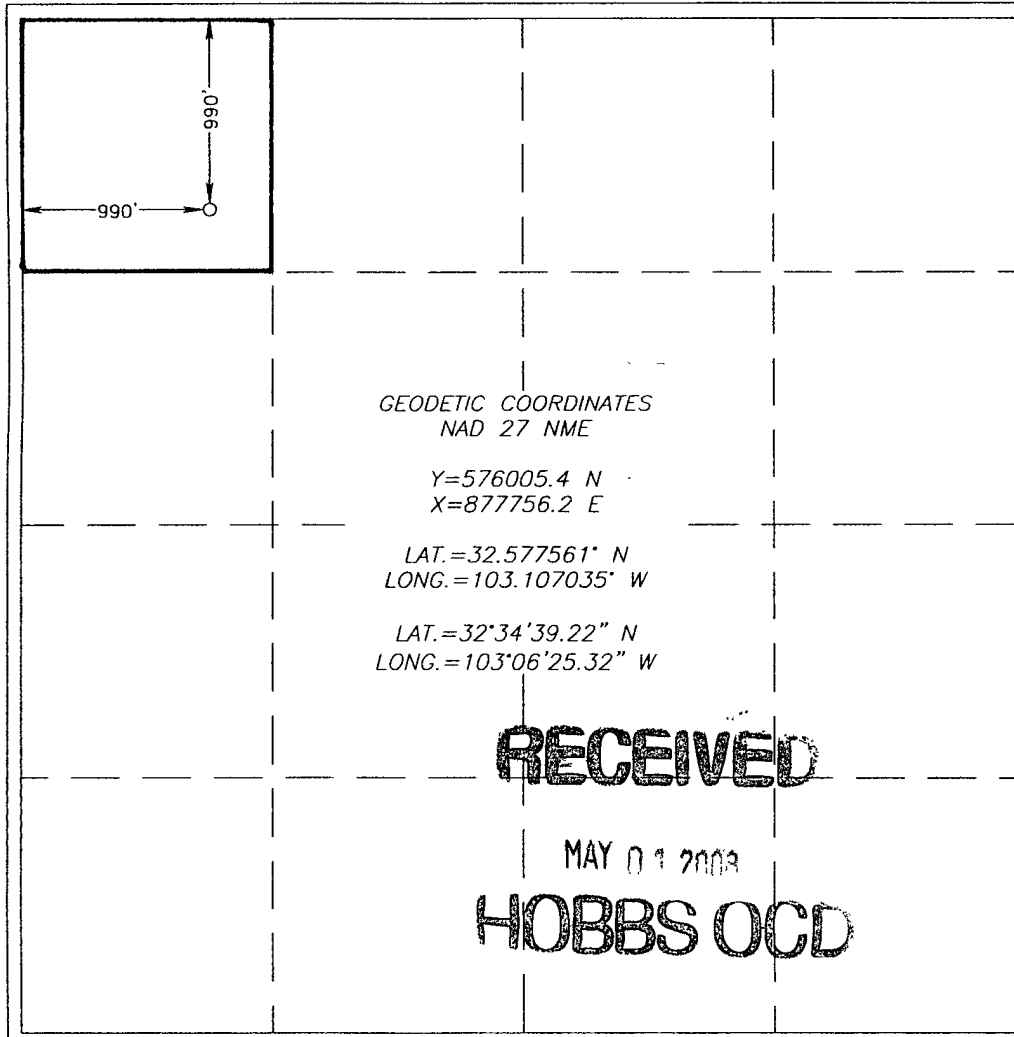
UL or lot No.	Section	Township	Range	Lot Idn	Feet from the	North/South line	Feet from the	East/West line	County
D	13	20-S	38-E		990	NORTH	990	West	LEA

Bottom Hole Location If Different From Surface

UL or lot No.	Section	Township	Range	Lot Idn	Feet from the	North/South line	Feet from the	East/West line	County

Dedicated Acres	Joint or Infill	Consolidation Code	Order No.
40			

NO ALLOWABLE WILL BE ASSIGNED TO THIS COMPLETION UNTIL ALL INTERESTS HAVE BEEN CONSOLIDATED OR A NON-STANDARD UNIT HAS BEEN APPROVED BY THE DIVISION



OPERATOR CERTIFICATION

I hereby certify that the information herein is true and complete to the best of my knowledge and belief, and that this organization either owns a working interest or unleased mineral interest in the land including the proposed bottom hole location or has a right to drill this well at this location pursuant to a contract with an owner of such mineral or working interest, or to a voluntary pooling agreement or a compulsory pooling order heretofore entered by the division.

A. Mackay 4/29/08
Signature Date
Sophie Mackay
Printed Name

SURVEYOR CERTIFICATION

I hereby certify that the well location shown on this plat was plotted from field notes of actual surveys made by me or under my supervision, and that the same is true and correct to the best of my belief.

DECEMBER 12 2007
Date Surveyed
Signature & Seal of Professional Surveyor
3239
Ronald J. Eidson 12/19/07
Certificate No. GARY EIDSON 12641
RONALD J. EIDSON 3239