

**RECEIVED**

**JUN 25 2008** NEW MEXICO ENERGY, MINERALS and  
**HOBBS OCD** NATURAL RESOURCES DEPARTMENT

**BILL RICHARDSON**  
Governor

**Joanna Prukop**  
Cabinet Secretary

**Mark E. Fesmire, P.E.**  
Director  
Oil Conservation Division

**\*Response Required -- Deadline Enclosed\***

24-Apr-08

✓ **OXY USA WTP LIMITED PARTNERSHIP**  
PO Box 4294  
Houston, TX 77210-4294

**Enervest Operating LLC** **CARTER EAVES NCT A No.1**  
1001 Fannin St, Suite 800  
Houston, TX 77002

**LETTER OF VIOLATION**

**Delinquent Regulatory Filings**

Dear Operator:

Oil Conservation Division ("OCD") records indicate that you failed to file the required reports identified below, or that your filings were incomplete or inaccurate.

***NON-COMPLIANT WELL DETAIL SECTION***

**MYERS LANGLIE MATTIX UNIT No.136**

**Location: 6-24S-37E**

**30-025-11019-00-**

**Original Well Type: Injection - (All Types)**

**Well Status: Active**

**Determination or Violation Date: 4/24/2008**

**Delinquent Report or Filing(s): - Other Monitoring and Reporting Violation**

**Comments:** This well is multiple completed in the Langlie Mattix Seven River-Queen-Grayburg and Jalmat Tansill Yates-Seven River (Gas) pools. Multiple completed well require packer leakage test per Rule 19.15.3.112.A. Packer Leakage test will be run on this well by May 24, 2008 or Shut-in and plugged. Notify the OCD Hobbs office 24 hours before testing. If you have questions on this matter, please call Chris Williams (575) 393-6161 ext 102 or Donna Mull (575) 393-6161 ext 115.

**CORRECTIVE ACTION ON THIS WELL DUE BY: 5/24/2008**

Please file or correct the reports identified above by the corrective action due date indicated. If you fail to file or correct the reports by that date, the OCD will take enforcement action that may include but is not limited to applying for an order assessing civil penalties and/or requiring you to plug and abandon the wells associated with those reports.

Thank you for your prompt attention to this matter and your efforts in helping to protect our environment and the infrastructure of the oil and gas industry.

Sincerely,

*Chris Williams*

Hobbs OCD District Office

*AMH.*  
6-26-08

Operator Oxy USA WTP LP Lease MURRES LANGLIE MATTIX Well No. 136  
Location Of Well: Unit C Section 6 Township 24S Range 37E County LEA

	Name of Reservoir or Pool	Type of Prod. (Oil or Gas)	Method of Prod. (Flow Art. Lift)	Prod. Medium (Tbg. Or Cag.)	Choke Size
Upper Completion	<u>JALMAR</u>	<u>GAS</u>	<u>Flow</u>	<u>Csg</u>	<u>2</u>
Lower Completion	<u>LANGLIE MATTIX</u>	<u>INS</u>	<u>INS</u>	<u>TBL</u>	<u>2</u>

FLOW TEST NO. 1

Both zones shut-in at (hour, date): 6-18-08 10:00 PM

Well opened at (hour, date): 6-19-08 7:00 AM Upper Completion Lower Completion

Indicate by (X) the zone producing..... X

Pressure at beginning of test..... 600 #

Stabilized? (Yes or No)..... Yes

Maximum pressure during test..... 660

Minimum pressure during test..... 520

Pressure at conclusion of test..... 600

Pressure change during test (Maximum minus Minimum)..... 140

Was pressure change an increase or a decrease?.....

Well closed at (hour, date): 6-20-08 7:00 AM Total Time On Production 24 HRS

Oil Production Gas Production

During Test: \_\_\_\_\_ bbls; Grav. \_\_\_\_\_; During Test \_\_\_\_\_ MCF; GOR \_\_\_\_\_

Remarks: \_\_\_\_\_

FLOW TEST NO. 2

Both zones shut-in at (hour, date): 6-20-08 7:00 AM

Well opened at (hour, date): 6-21-08 7:00 AM Upper Completion Lower Completion

Indicate by (X) the zone producing..... X

Pressure at beginning of test..... 600 #

Stabilized? (Yes or No)..... ?

Maximum pressure during test..... 160 #

Minimum pressure during test..... 160 #

Pressure at conclusion of test..... 160 #

Pressure change during test (Maximum minus Minimum)..... 440 #

Was pressure change an increase or a decrease?..... DECREASE

Well closed at (hour, date): 7-21-08 7:00 AM Total Time On Production 24 HRS

Oil Production Gas Production

During Test: \_\_\_\_\_ bbls; Grav. \_\_\_\_\_; During Test \_\_\_\_\_ MCF; GOR \_\_\_\_\_

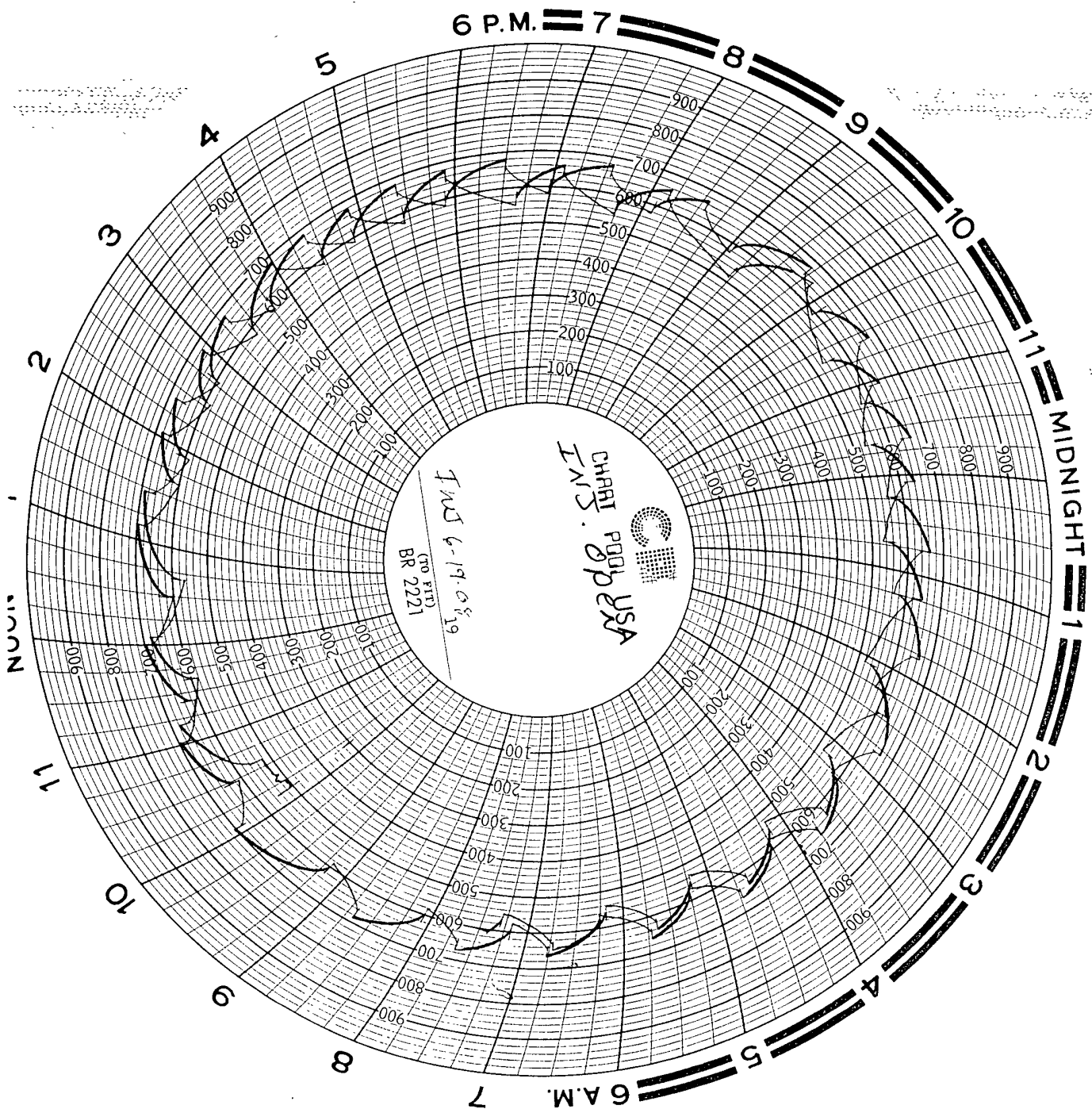
Remarks: \_\_\_\_\_

I hereby certify that the information herein contained is true and complete to the best of my knowledge.

Approved \_\_\_\_\_ 20 \_\_\_\_\_  
New Mexico Oil Conservation Division

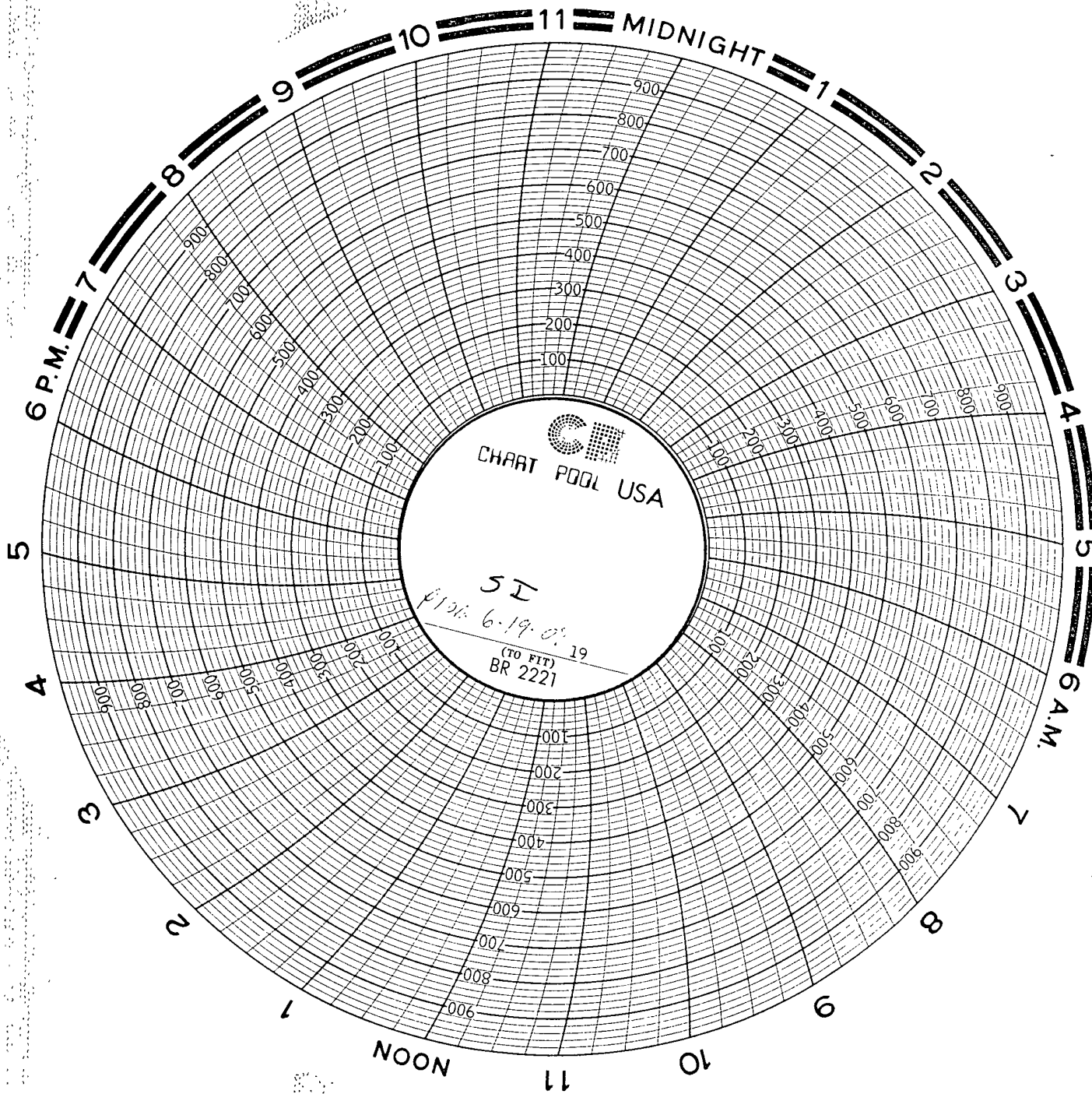
By \_\_\_\_\_  
Title \_\_\_\_\_

Operator Oxy USA WTP LP  
By Vikki Wilkerson - Tony Savage  
Title Admin - Prod Tech  
E-mail Address VIKKI-WILKERSON.oxy.com  
Date 6-24-08



KEY ENERGY  
COMPANY Oxy  
LEASE MMU  
WELL 134  
INFO \_\_\_\_\_  
TO \_\_\_\_\_  
FROM \_\_\_\_\_  
CO. MAN \_\_\_\_\_  
UNIT \_\_\_\_\_  
DRIVER - NAME \_\_\_\_\_

PRESSURE UP ON CSG \_\_\_\_\_  
PSI FOR 30 MIN. \_\_\_\_\_  
TO \_\_\_\_\_  
DATE \_\_\_\_\_



KEY ENERGY

COMPANY Ox4

LEASE MLMU

WELL ~~ALMAH~~ 136

INFO \_\_\_\_\_

PRESSURE UP ON CSG 0

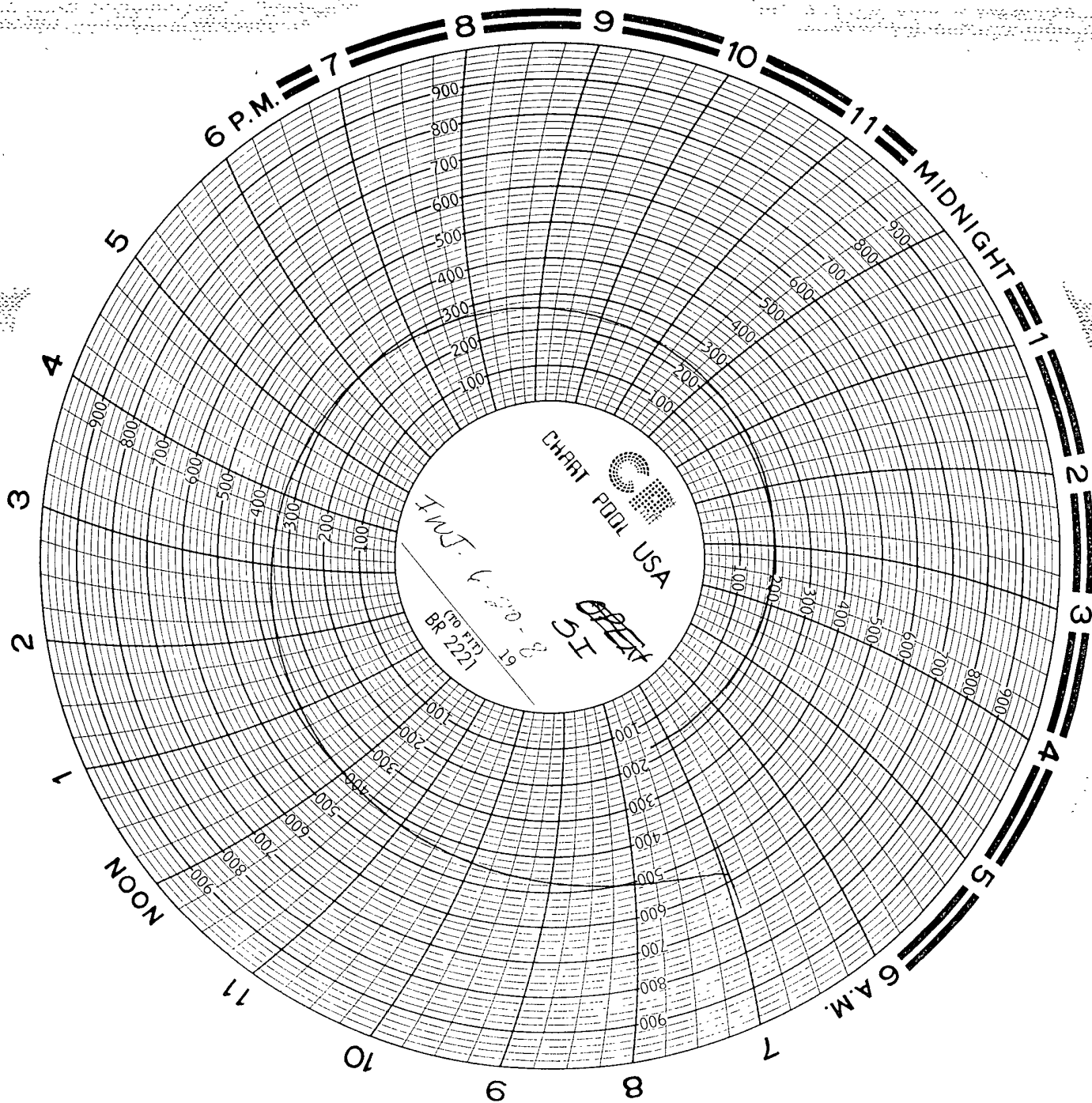
TO \_\_\_\_\_ PSI FOR 30 MIN.

FROM \_\_\_\_\_ TO \_\_\_\_\_

CO. MAN \_\_\_\_\_

UNIT \_\_\_\_\_ DATE \_\_\_\_\_

DRIVER - NAME \_\_\_\_\_



KEY ENERGY

COMPANY \_\_\_\_\_

LEASE \_\_\_\_\_

WELL \_\_\_\_\_

INFO \_\_\_\_\_

PRESSURE UP ON CSG \_\_\_\_\_

TO \_\_\_\_\_ PSI FOR 30 MIN.

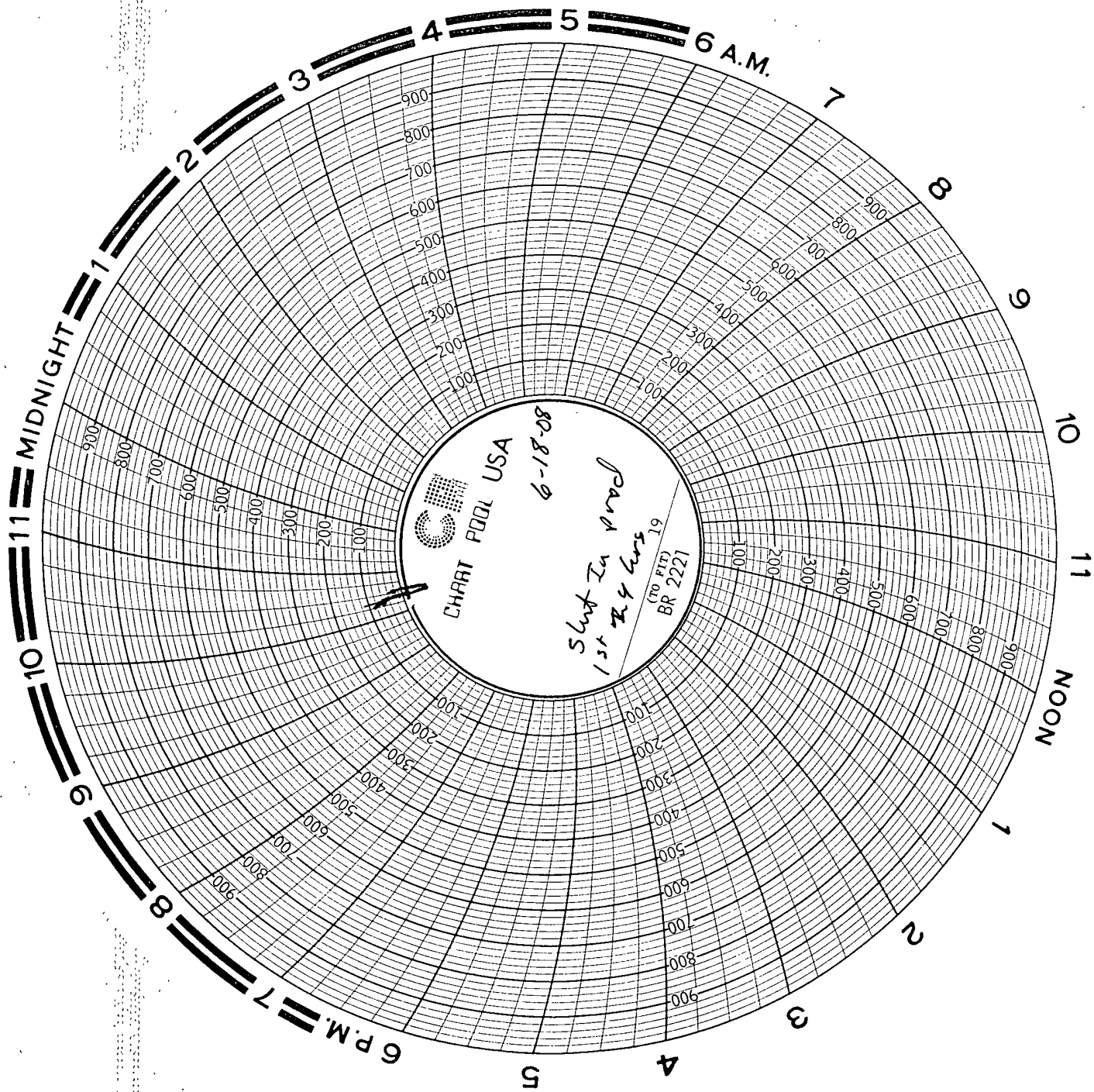
FROM \_\_\_\_\_ TO \_\_\_\_\_

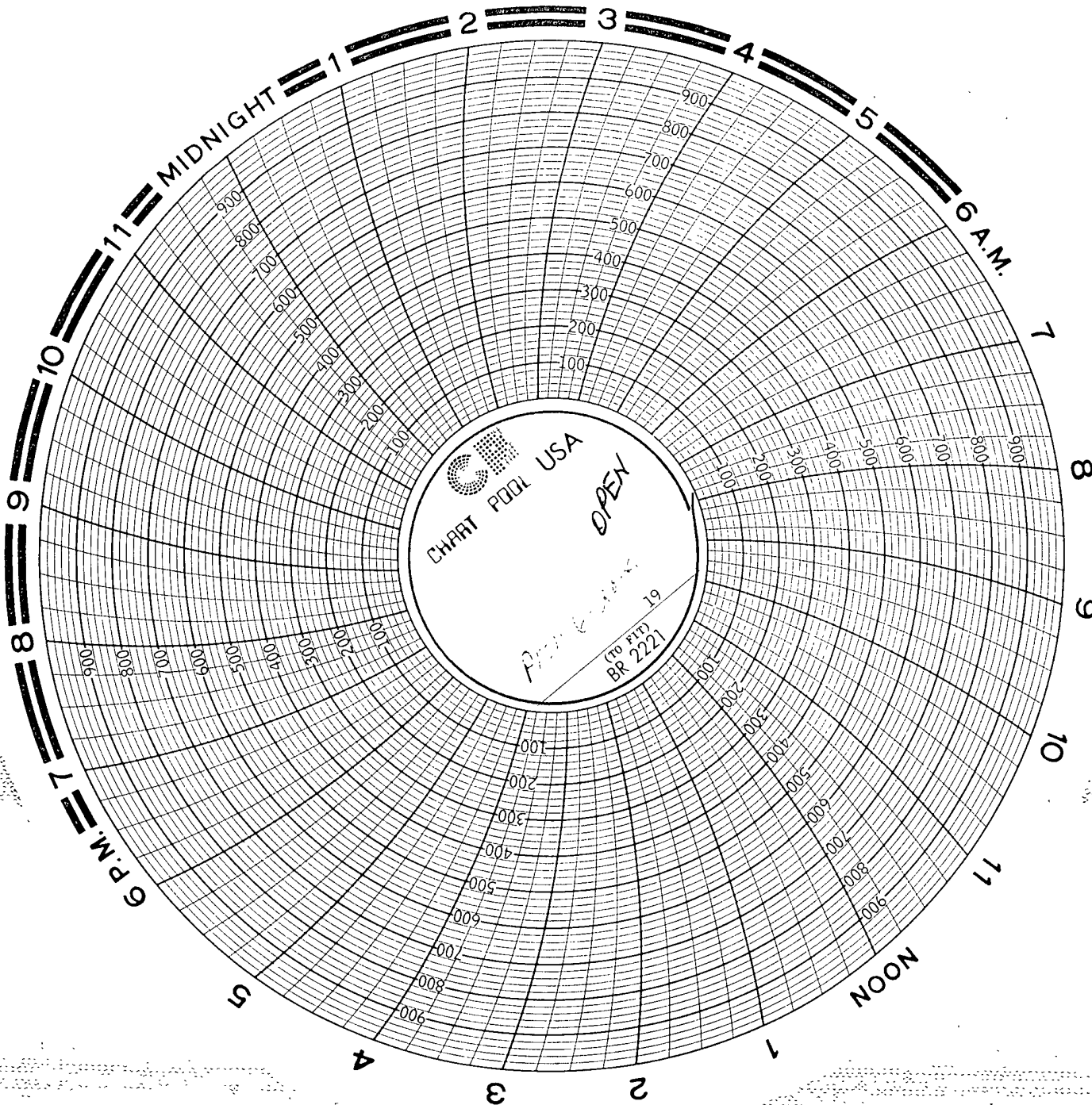
CO. MAN \_\_\_\_\_

UNIT \_\_\_\_\_ DATE \_\_\_\_\_

DRIVER - NAME \_\_\_\_\_

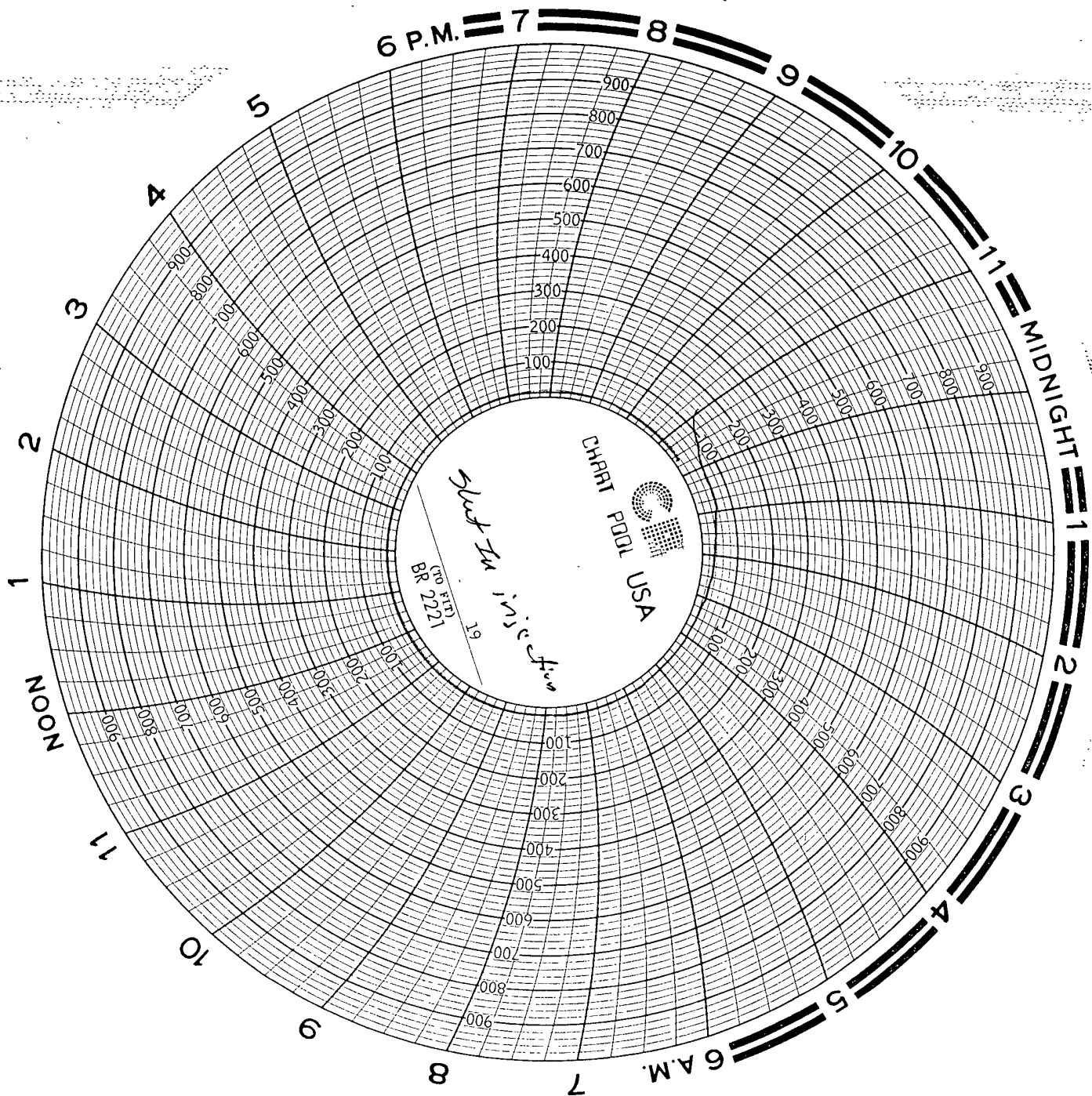






BOTH 5I

KEY ENERGY  
COMPANY \_\_\_\_\_  
LEASE MLMD  
WELL 134  
INFO \_\_\_\_\_  
PRESSURE UP ON CSG \_\_\_\_\_  
TO \_\_\_\_\_ PSI FOR 30 MIN.  
FROM \_\_\_\_\_ TO \_\_\_\_\_  
CO. MAN \_\_\_\_\_  
UNIT \_\_\_\_\_ DATE \_\_\_\_\_  
DRIVER - NAME \_\_\_\_\_



BOTH SI

KEY ENERGY  
COMPANY \_\_\_\_\_  
LEASE 136 \_\_\_\_\_  
WELL 136 \_\_\_\_\_  
INFO \_\_\_\_\_  
PRESSURE UP ON CSG \_\_\_\_\_  
TO \_\_\_\_\_ PSI FOR 30 MIN.  
FROM \_\_\_\_\_ TO \_\_\_\_\_  
CO. MAN \_\_\_\_\_  
UNIT \_\_\_\_\_ DATE \_\_\_\_\_  
DRIVER - NAME \_\_\_\_\_