

DISTRICT I
1625 N FRENCH DR., HOBBS, NM 88240

State of New Mexico
Energy, Minerals and Natural Resources Department

Form C-102
Revised October 12, 2005
Submit to Appropriate District Office
State Lease - 4 Copies
Fee Lease - 3 Copies

DISTRICT II
4301 W GRAND AVENUE, ARTESIA, NM 88210

OIL CONSERVATION DIVISION
1220 SOUTH ST. FRANCIS DR.
Santa Fe, New Mexico 87505

RECEIVED

DISTRICT III
1000 RIO BRAZOS RD., AZTEC, NM 87410

DISTRICT IV
1220 S. ST. FRANCIS DR., SANTA FE, NM 87505

WELL LOCATION AND ACREAGE DEDICATION **APR 11 2008**

AMENDED REPORT

API Number 30-025-39120	Pool Code 83280	Well Name HOBBS OGD
Property Code 37330	Property Name HIGHWAY 5 FEDERAL COM	Well Number 1
OGRID No 18,917	Operator Name READ & STEVENS, INC	Elevation 3627'

Surface Location

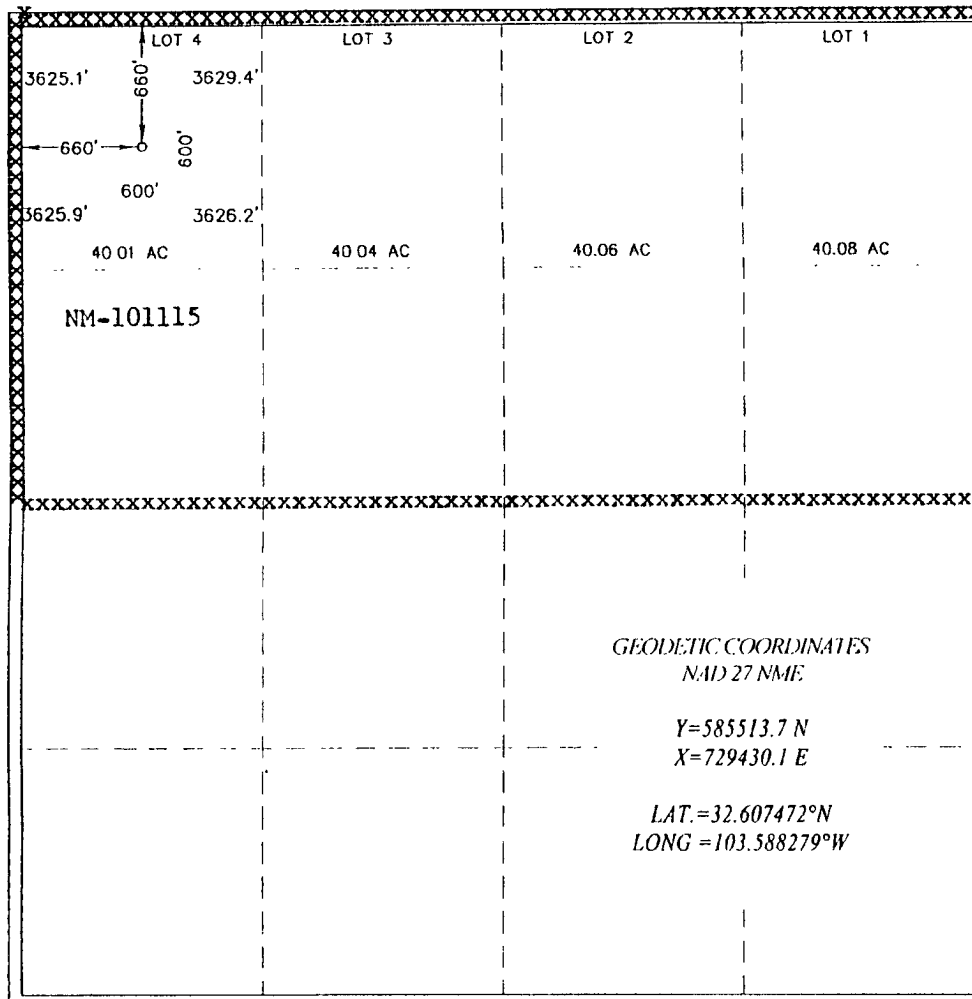
UL. or lot No	Section	Township	Range	Lot Idn	Feet from the	North/South line	Feet from the	East/West line	County
4	5	20-S	34-E		660	NORTH	660	WEST	LEA

Bottom Hole Location If Different From Surface

UL. or lot No	Section	Township	Range	Lot Idn	Feet from the	North/South line	Feet from the	East/West line	County

Dedicated Acres 320	Joint or Infill	Consolidation Code Com	Order No
------------------------	-----------------	---------------------------	----------

NO ALLOWABLE WILL BE ASSIGNED TO THIS COMPLETION UNTIL ALL INTERESTS HAVE BEEN CONSOLIDATED OR A NON-STANDARD UNIT HAS BEEN APPROVED BY THE DIVISION



OPERATOR CERTIFICATION

I hereby certify that the information herein is true and complete to the best of my knowledge and belief, and that this organization either owns a working interest or unleased mineral interest in the land including the proposed bottom hole location or has a right to drill this well at this location pursuant to a contract with an owner of such mineral or working interest, or to a voluntary pooling agreement or a compulsory pooling order heretofore entered by the division.

George R. Smith 5/6/08
Signature Date

George R. Smith, agent
Printed Name

SURVEYOR CERTIFICATION

I hereby certify that the well location shown on this plat was plotted from field notes of actual surveys made by me or under my supervision, and that the same is true and correct to the best of my belief

APR 16 2008
Date Surveyed

Ronald J. Edson
Signature & Seal of Professional Surveyor

Certificate No Gary G. Edson 12641
Ronald J. Edson 3239