

DISTRICT I  
P.O. Box 1980, Hobbs, NM 88241-1980

State of New Mexico  
Energy, Minerals and Natural Resources Department

Form C-102  
Revised February 10, 1994  
Submit to Appropriate District Office  
State Lease - 4 Copies  
Fee Lease - 3 Copies

DISTRICT II  
P.O. Drawer DD, Artesia, NM 88211-0719

OIL CONSERVATION DIVISION  
P.O. Box 2088  
Santa Fe, New Mexico 87504-2088

DISTRICT III  
1000 Rio Brazos Ed., Artec, NM 87410

DISTRICT IV  
P.O. BOX 2088, SANTA FE, N.M. 87504-2088

WELL LOCATION AND ACREAGE DEDICATION PLAT

AMENDED REPORT

API Number 30-025-35585	Pool Code 40875	Pool Name Lovington Strawn, West
Property Code 27820	Property Name WEST LOVINGTON STRAWN UNIT	Well Number 19
OGRID No. 162928	Operator Name ENERGEN RESOURCES CORPORATION	Elevation 3994'

Surface Location

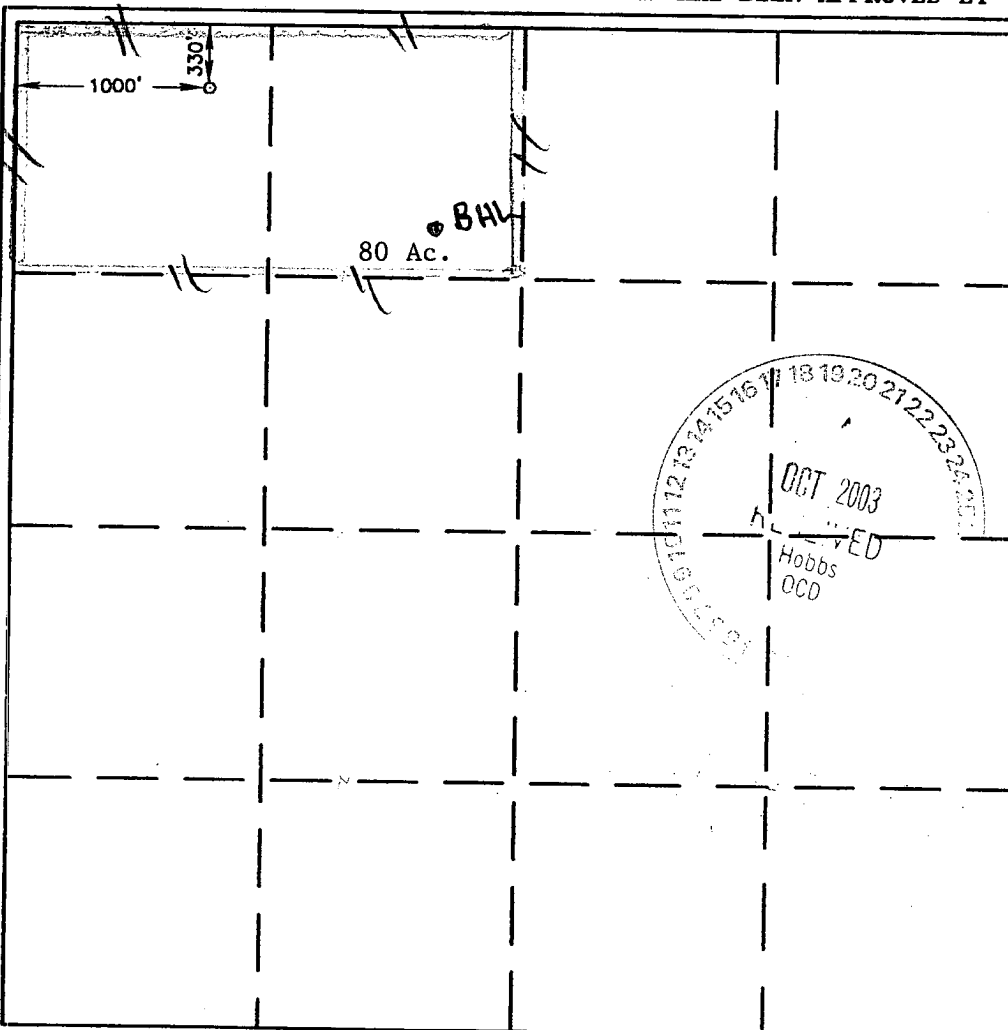
UL or lot No.	Section	Township	Range	Lot Idn	Feet from the	North/South line	Feet from the	East/West line	County
D	33	15-S	35-E		330	NORTH	1000	WEST	LEA

Bottom Hole Location If Different From Surface

UL or lot No.	Section	Township	Range	Lot Idn	Feet from the	North/South line	Feet from the	East/West line	County
C	33	15S	35E		1157	N	2233	W	Lea

Dedicated Acres 80	Joint or Infill	Consolidation Code	Order No.
-----------------------	-----------------	--------------------	-----------

NO ALLOWABLE WILL BE ASSIGNED TO THIS COMPLETION UNTIL ALL INTERESTS HAVE BEEN CONSOLIDATED OR A NON-STANDARD UNIT HAS BEEN APPROVED BY THE DIVISION



**OPERATOR CERTIFICATION**

I hereby certify the the information contained herein is true and complete to the best of my knowledge and belief.

*Sharon Hindman*  
Signature

Sharon Hindman  
Printed Name

Regulatory Analyst  
Title

12/07/01  
Date

---

**SURVEYOR CERTIFICATION**

I hereby certify that the well location shown on this plat was plotted from field notes of actual surveys made by me or under my supervision, and that the same is true and correct to the best of my belief.

APRIL 18, 2001  
Date Surveyed

AWB  
Signature & Seal

Professional Surveyor

*Ronald J. Edson* 4/26/01  
81-11-0479

Certificate No. RONALD J. EDSON 3239  
GARY EDSON 12641