

OCD-HOBBS

Form 3160-3
(April 2004)

RECEIVED

FORM APPROVED
OMB No. 1004-0137
Expires March 31, 2007

UNITED STATES
DEPARTMENT OF THE INTERIOR
BUREAU OF LAND MANAGEMENT

APR 28 2010

HOBBSOCD

APPLICATION FOR PERMIT TO DRILL OR REENTER

| | | | |
|--|--|---|--|
| 1a. Type of work <input checked="" type="checkbox"/> DRILL <input type="checkbox"/> REENTER | | 5. Lease Serial No. NM-04591 | |
| 1b. Type of Well: <input checked="" type="checkbox"/> Oil Well <input type="checkbox"/> Gas Well <input type="checkbox"/> Other <input checked="" type="checkbox"/> Single Zone <input type="checkbox"/> Multiple Zone | | 6. If Indian, Allottee or Tribe Name | |
| 2. Name of Operator Devon Energy Production Company, LP | | 7. If Unit or CA Agreement, Name and No. | |
| 3a. Address 20 North Broadway Oklahoma City, Oklahoma City 73102-8260 | | 8. Lease Name and Well No. <30874> New Mexico Federal 2 | |
| 3b. Phone No (include area code) 405-552-8198 | | 9. API Well No. 30-025-39740 | |
| 4. Location of Well (Report location clearly and in accordance with any State requirements.)* At surface 1330 FSL & 1310 FEL, Unit I At proposed prod zone 1330 FSL & 1310 FEL, Unit I | | 10. Field and Pool, or Exploratory E-K Delaware <21655> | |
| 14. Distance in miles and direction from nearest town or post office* Approximately 12 miles southeast of Maljamar, NM | | 11. Sec., T. R. M. or Blk. and Survey or Area Sec 24, T18S R33E | |
| 15. Distance from proposed* location to nearest property or lease line, ft. (Also to nearest drig. unit line, if any) 10' | | 12. County or Parish Lea County | |
| 16. No. of acres in lease 1,114.15 | | 13. State NM | |
| 17. Spacing Unit dedicated to this well 40 acres | | 18. Distance from proposed location* to nearest well, drilling, completed, applied for, on this lease, ft. 345' | |
| 19. Proposed Depth 6,000' | | 20. BLM/BIA Bond No on file CO-1104 | |
| 21. Elevations (Show whether DF, KDB, RT, GL, etc.) 3936' GL | | 22. Approximate date work will start* 01/01/2010 | |
| | | 23. Estimated duration 30 days | |

UNORTHODOX
LOCATION

The following, completed in accordance with the requirements of Onshore Oil and Gas Order No 1, shall be attached to this form:

- 1. Well plat certified by a registered surveyor.
- 2. A Drilling Plan.
- 3. A Surface Use Plan (if the location is on National Forest System Lands, the SUPO shall be filed with the appropriate Forest Service Office)
- 4. Bond to cover the operations unless covered by an existing bond on file (see Item 20 above)
- 5. Operator certification
- 6. Such other site specific information and/or plans as may be required by the authorized officer.

| | | |
|---|--|---------------------|
| 25. Signature | Name (Printed/Typed) Norvella Adams | Date 09/28/2009 |
| Title Sr. Staff Eng. Tech | | |
| Approved by (Signature) /s/ Don Peterson | Name (Printed/Typed) | Date APR 23 2010 |
| Title FIELD MANAGER | Office CARLSBAD FIELD OFFICE | |

Application approval does not warrant or certify that the applicant holds legal or equitable title to those rights in the subject lease which would entitle the applicant to conduct operations thereon.
Conditions of approval, if any, are attached. **APPROVAL FOR TWO YEARS**

Title 18 U.S.C. Section 1001 and Title 43 U.S.C. Section 1212, make it a crime for any person knowingly and willfully to make to any department or agency of the United States any false, fictitious or fraudulent statements or representations as to any matter within its jurisdiction.

*(Instructions on page 2)

CONDITIONS OF APPROVAL for Non-Standard Location
Intent to drill ONLY --- CANNOT produce until the Non-Standard Location has been approved by OCD Santa Fe office.

Capitan Controlled Water Basin

SEE ATTACHED FOR
CONDITIONS OF APPROVAL

APPROVAL SUBJECT TO
GENERAL REQUIREMENTS
AND SPECIAL STIPULATIONS
ATTACHED

RECEIVED

DISTRICT I
1625 N. French Dr., Hobbs, NM 88240
DISTRICT II
1301 W. Grand Avenue, Artesia, NM 88210
DISTRICT III
1000 Rio Brazos Rd., Aztec, NM 87410
DISTRICT IV
1220 S. St. Francis Dr., Santa Fe, NM 87505

State of New Mexico
Energy, Minerals and Natural Resources Department

APR 28 2010

Form C-102
Revised October 12, 2005

OIL CONSERVATION DIVISION
1220 South St. Francis Dr.
Santa Fe, New Mexico 87505

HOBBS

Submit to Appropriate District Office
State Lease - 4 Copies
Fee Lease - 3 Copies

AMENDED REPORT

WELL LOCATION AND ACREAGE DEDICATION PLAT

| | | |
|-----------------------------------|--|-----------------------|
| API Number 30-025-39140 | Pool Code 21655 | Pool Name Delaware |
| Property Code 30874 | Property Name NEW MEXICO FEDERAL | |
| OGRID No. 6137 | Operator Name DEVON ENERGY PRODUCTION COMPANY, L.P. | Well Number 2 |
| | | Elevation 3936' |

Surface Location

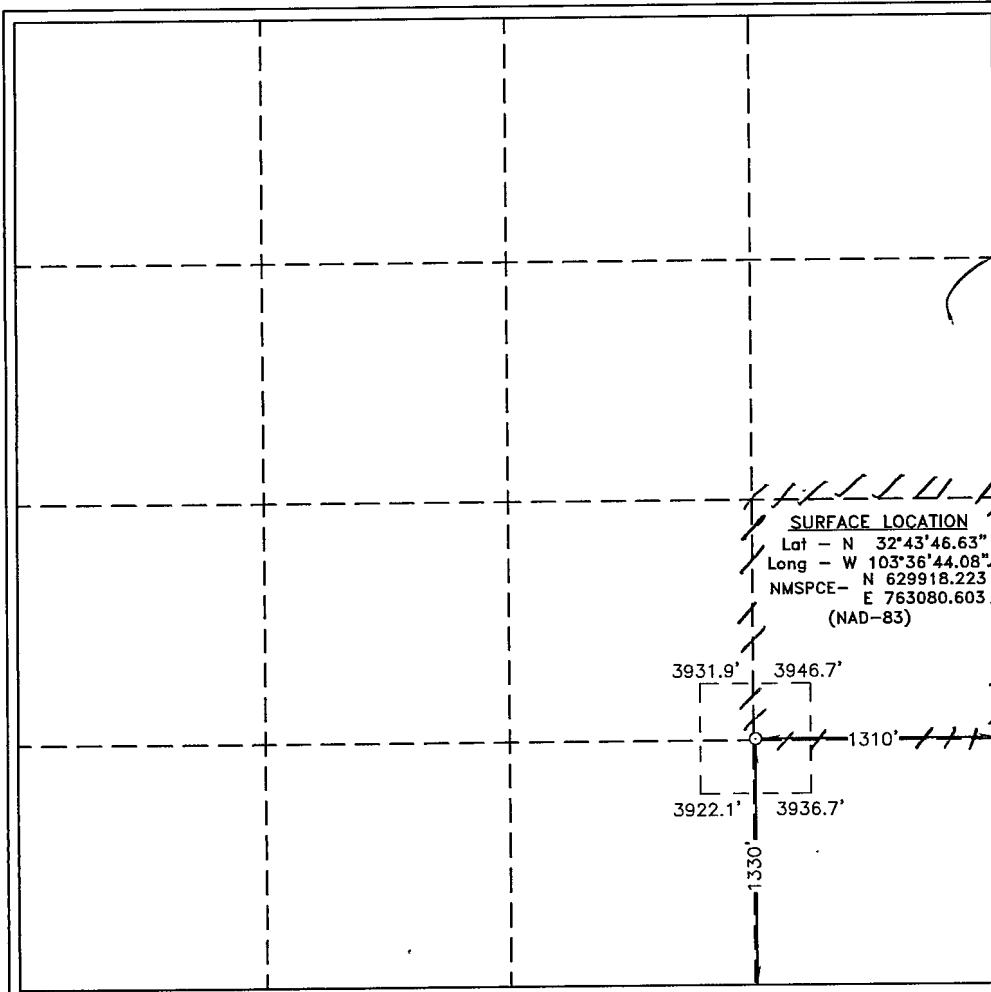
| UL or lot No. | Section | Township | Range | Lot Idn | Feet from the | North/South line | Feet from the | East/West line | County |
|---------------|---------|----------|-------|---------|---------------|------------------|---------------|----------------|--------|
| 1 | 24 | 18 S | 33 E | | 1330 | SOUTH | 1310 | EAST | LEA |

Bottom Hole Location If Different From Surface

| UL or lot No. | Section | Township | Range | Lot Idn | Feet from the | North/South line | Feet from the | East/West line | County |
|---------------|---------|----------|-------|---------|---------------|------------------|---------------|----------------|--------|
| | | | | | | | | | |

| | | | |
|-----------------------|-----------------|--------------------|-----------|
| Dedicated Acres 40 | Joint or Infill | Consolidation Code | Order No. |
|-----------------------|-----------------|--------------------|-----------|

NO ALLOWABLE WILL BE ASSIGNED TO THIS COMPLETION UNTIL ALL INTERESTS HAVE BEEN CONSOLIDATED OR A NON-STANDARD UNIT HAS BEEN APPROVED BY THE DIVISION



OPERATOR CERTIFICATION

I hereby certify that the information contained herein is true and complete to the best of my knowledge and belief, and that this organization either owns a working interest or unleased mineral interest in the land including the proposed bottom hole location pursuant to a contract with an owner of such a mineral or working interest, or to a voluntary pooling agreement or a compulsory pooling order heretofore entered by the division.

[Signature]
Signature
Date
9-28-09

Norvella Adams
Printed Name

SURVEYOR CERTIFICATION

I hereby certify that the well location shown on this plat was plotted from field notes of actual surveys made by me or under my supervision, and that the same is true and correct to the best of my belief.

SEPTEMBER 4, 2009
Date Surveyed
Signature & Seal of Professional Surveyor
[Signature]
W.C. Jones
Professional Surveyor

Certificate No. Gary L. Jones 7977

BASIN SURVEYS

DRILLING PROGRAM

Devon Energy Production Company, LP

New Mexico Federal 2

Surface Location: 1330' FSL & 1310' FEL, Unit I, Sec 24 T18S R33E, Lea, NM
 Bottom Hole Location: 1330' FSL & 1310' FEL, Unit I, Sec 24 T18S R33E, Lea, NM

1. Geologic Name of Surface Formation

a. Quaternary Alluvium

2. Estimated Tops of Geological Markers & Depths of Anticipated Fresh Water, Oil or Gas:

| | | |
|------------------|-------|-------------|
| a. Rustler | 1666' | Fresh Water |
| b. Salado Salt | 1894' | |
| c. Tansil Dol. | 3002' | |
| d. Yates Ss | 3153' | Oil & Gas |
| e. Seven Rivers | 3627' | Oil & Gas |
| f. Queen Ss | 4366' | Oil & Gas |
| g. Grayburg | 4432' | Oil & Gas |
| h. Cherry Canyon | 5227' | Oil & Gas |

No other formations are expected to yield oil, gas or fresh water in measurable volumes. The surface fresh water sands will be protected by setting 8 5/8" casing at 3100' and circulating cement back to surface. The Delaware intervals will be isolated by setting 5 1/2" casing to total depth and circulating cement to 2600'.

3. Casing Program:

| <u>Hole Size</u> | <u>Hole Interval</u> | <u>OD Csg</u> | <u>Casing Interval</u> | <u>Weight</u> | <u>Collar</u> | <u>Grade</u> |
|------------------|----------------------|---------------|------------------------|---------------|---------------|--------------|
| 14 3/4" | 0' - 450' / 1400' | 11 3/4" | 0' - 450' / 1400' | 42# | ST&C | H-40 |
| 11" | 450' - 3100' | 8 5/8" | 0' - 3100' | 24# & 32# | LT&C | J-55 |
| 7 7/8" | 3100' - 6,000' | 5 1/2" | 0' - 6,000' | 17# | LT&C | J-55 |
| | | | 0' - 1500' | 24# | ST&C | J-55 |
| | | | 1500' - 3,100' | 32# | LT&C | J-55 |

*per operator
10/27/09
CRW*

Design Parameter Factors:

| <u>Casing Size</u> | <u>Collapse Design Factor</u> | <u>Burst Design Factor</u> | <u>Tension Design Factor</u> |
|--------------------|-------------------------------|----------------------------|------------------------------|
| 11 3/4" | 5.35 | 9.81 | 15.35 |
| 8 5/8" | 1.71 | 2.65 | 4.17 |
| 5 1/2" | 1.74 | 1.89 | 2.00 |

4. Cement Program: (Note yields; and dv tool depths if multiple stages)

a. 11 3/4" Surface Lead with 110 sx (35:65) Poz Class C + 5% NaCl + 1/4 lbs/sx Celloflake, and 4% Bentonite + 1% Sodium Metasilicate + 5%

See COA

MPA-5; 12.8 ppg, 1.97 cf/sx, 10.56 gps. Tail with 150 sx Class C + 2% CaCl₂ + ¼ lbs/sx Celloflake; 14.8 ppg, 1.35 cf/sx, 6.35 gps. TOC = 0.

- b. 8 5/8" Intermediate Lead with 695 sx (35:65) Poz Class C + 5% NaCl + ¼ lbs/sx Cello Flake + 6% Bentonite + 5% NaCl; 12.5 ppg, 1.97 cf/sx, 11.24 gps. Tail with 300 sx Class C + ¼ lbs/sx Cello Flake + 5% NaCl + 0.4% Sodium Metasilicate + 4% MPA-5; 14.8 ppg, 1.35 cf/sx, 6.35 gps. TOC = 0.
- c. 5 1/2" Production Lead with 225 sx (35:65) Poz Class C + ¼ #/sx Cello Flake + 6% Bentonite + 0.4% FL-52A; 13.30 ppg, 1.94 cf/sx, 7.55 gps. Tail with 585 sx (60:40) Poz Class C + 1% NaCl; 13.8 ppg, 1.35 cf/sx, 6.29 gps. TOC = 2,600.

The above cement volumes could be revised pending the caliper measurement from the open hole logs. All casing is new and API approved.

5. Pressure Control Equipment:

The blowout prevention system will consist of a bag type (hydрил) preventer, a double ram preventer stack, and a rotating head. Both the hydрил and ram stack will be hydraulically operated. Both BOP systems will be rated at 5000 psi. Prior to drilling out the the 8 5/8" intermediate shoe the ram stack will be nipped up with 4.5" pipe rams installed. **The hydрил will be tested to 1000 psi (high) and 250 psi (low). Tests on the 5000 psi BOP will be conducted per the BLM Drilling Operations Order #2.** *see COA*

The ram system will be operated and checked each 24-hour period and each time the drill pipe is out of the hole. These tests will be logged in the daily driller's log. A 2" kill line and 3" choke line will be incorporated into the drilling spool below the ram BOP. In addition to the rams and hydрил, other BOP accessories include a kelly cock, floor safety valve, choke lines and choke manifold rated at 5000 psi WP.

6. Proposed Mud Circulation System *see COA*

| <u>Depth</u> | <u>Mud Wt.</u> | <u>Visc</u> | <u>Fluid Loss</u> | <u>Type System</u> |
|-----------------------|----------------|-------------|-------------------|---------------------|
| 0' - 450' <i>1800</i> | 8.4 - 9.0 | 32-34 | NC | Fresh Water |
| 450' - 3100' | 8.8 - 9.2 | 28-30 | NC | Fresh Water / Brine |
| 3100' - 6,000' | 8.6 - 9.0 | 28 | NC-12 cc | Fresh Water / Brine |

The necessary mud products for weight addition and fluid loss control will be on location at all times.

7. Auxiliary Well Control and Monitoring Equipment:

- a. A Kelly cock will be in the drill string at all times.
- b. A full opening drill pipe stabbing valve having the appropriate connections will be on the rig floor at all times.
- c. Hydrogen Sulfide detection equipment will be in operation after drilling out the 8 5/8" casing shoe until the 5 1/2" casing is cemented. Breathing equipment will be on location upon drilling the 8 5/8" shoe until total depth is reached.

8. Logging, Coring, and Testing Program: See COA

- a. Drill stem tests will be based on geological sample shows.
- b. If a drill stem test is anticipated; a procedure, equipment to be used and safety measures will be provided via sundry notice to the BLM.
- c. The open hole electrical logging program will be:
 - i. Total Depth to Intermediate Casing Dual Laterolog-Micro Laterolog with SP and Gamma Ray. Compensated Neutron – Z Density log with Gamma Ray and Caliper.
 - ii. Total Depth to Surface Compensated Neutron with Gamma Ray
 - iii. No coring program is planned
 - iv. Additional testing will be initiated subsequent to setting the 5 1/2" production casing. Specific intervals will be targeted based on log evaluation, geological sample shows and drill stem tests.

9. Potential Hazards:

- a. No abnormal pressures or temperatures are expected. A H2S contingency plan will be provided. All personnel will be familiar with all aspects of safe operation of equipment being used to drill this well. Estimated BHP 2640 psi and Estimated BHT 130°.

10. Anticipated Starting Date and Duration of Operations:

- a. Road and location construction will begin after the BLM has approved the APD. Anticipated spud date will be as soon after BLM approval and as soon as a rig will be available. Move in operations and drilling is expected to take 30 days. If production casing is run then an additional 30 days will be needed to complete well and construct surface facilities and/or lay flow lines in order to place well on production.