

RECEIVED

ATS-10-365

AUG 02 2010

HOBBSOCD

OCD-HOBBS

Form 3160-3  
(April 2004)

FORM APPROVED  
OMB No 1004-0137  
Expires March 31, 2007

UNITED STATES  
DEPARTMENT OF THE INTERIOR  
BUREAU OF LAND MANAGEMENT

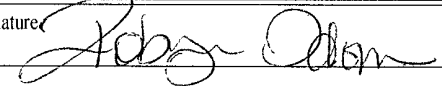
APPLICATION FOR PERMIT TO DRILL OR REENTER

1a. Type of work: <input checked="" type="checkbox"/> DRILL <input type="checkbox"/> REENTER		5 Lease Serial No. NMLC-029509A
1b. Type of Well <input checked="" type="checkbox"/> Oil Well <input type="checkbox"/> Gas Well <input type="checkbox"/> Other <input type="checkbox"/> Single Zone <input type="checkbox"/> Multiple Zone		6 If Indian, Allottee or Tribe Name N/A
2. Name of Operator COG Operating LLC		7 If Unit or CA Agreement, Name and No N/A
3a Address 550 W. Texas, Suite 1300 Midland TX 79701		8 Lease Name and Well No. <b>302519</b> M C FEDERAL #63
3b. Phone No. (include area code) (432) 685-4385		9 API Well No. 30-025- <b>39867</b>
4. Location of Well (Report location clearly and in accordance with any State requirements.) At surface <b>1540' FSL &amp; 1650' FWL, Unit K</b> At proposed prod zone <b>UNORTHODOX LOCATION</b>		10 Field and Pool, or Exploratory Maljamar; Yeso, West 44500
14 Distance in miles and direction from nearest town or post office* <b>2.5 miles south of Maljamar NM</b>		11 Sec., T. R. M or Blk and Survey or Area Sec 21, T17S, R32E
15 Distance from proposed* location to nearest property or lease line, ft (Also to nearest drig. unit line, if any) <b>1540'</b>	16 No. of acres in lease <b>640</b>	17 Spacing Unit dedicated to this well <b>40</b>
18 Distance from proposed* location to nearest well, drilling, completed, applied for, on this lease, ft. <b>500'</b>	19 Proposed Depth <b>7100'</b>	20 BLM/BIA Bond No. on file NMB000215
21 Elevations (Show whether DF, KDB, RT, GL, etc.) <b>4025' GL</b>	22 Approximate date work will start* <b>07/31/2010</b>	23. Estimated duration <b>10 days</b>

24. Attachments

The following, completed in accordance with the requirements of Onshore Oil and Gas Order No 1, shall be attached to this form

- 1 Well plat certified by a registered surveyor
- 2 A Drilling Plan
- 3 A Surface Use Plan (if the location is on National Forest System Lands, the SUPO shall be filed with the appropriate Forest Service Office)
- 4 Bond to cover the operations unless covered by an existing bond on file (see Item 20 above)
- 5 Operator certification
- 6. Such other site specific information and/or plans as may be required by the authorized officer

25 Signature 	Name (Printed/Typed) <b>Robyn M. Odum</b>	Date <b>04/22/2010</b>
Title <b>Regulatory Analyst</b>		

Approved by (Signature) <b>/s/ Don Peterson</b>	Name (Printed/Typed)	Date <b>JUL 29 2010</b>
Title <b>FIELD MANAGER</b>		Office <b>CARLSBAD FIELD OFFICE</b>

Application approval does not warrant or certify that the applicant holds legal or equitable title to those rights in the subject lease which would entitle the applicant to conduct operations thereon. Conditions of approval, if any, are attached. **APPROVAL FOR TWO YEARS**

Title 18 USC. Section 1001 and Title 43 USC. Section 1212, make it a crime for any person knowingly and willfully to make to any department or agency of the United States any false, fictitious or fraudulent statements or representations as to any matter within its jurisdiction

\*(Instructions on page 2)

Roswell Controlled Water Basin

NSL-6190

Approval Subject to General Requirements & Special Stipulations Attached

PETROLEUM ENGINEER



AUG 12 2010

SEE ATTACHED FOR CONDITIONS OF APPROVAL

RECEIVED

State of New Mexico

AUG 02 2010

DISTRICT I  
1625 N. FRENCH DR., HOBBS, NM 88240

RECEIVED

Energy, Minerals and Natural Resources Department

Form C-102

DISTRICT II  
1301 W. GRAND AVENUE, ARTESIA, NM 86210

AUG 02 2010

CONSERVATION DIVISION  
1220 SOUTH ST. FRANCIS DR.  
Santa Fe, New Mexico 87505

HOBSOCD

Revised October 12, 2005  
Submit to Appropriate District Office  
State Lease - 4 Copies  
Fee Lease - 3 Copies

DISTRICT III  
1000 Rio Brazos Rd., Aztec, NM 87410

HOBSOCD

DISTRICT IV  
1220 S. ST. FRANCIS DR., SANTA FE, NM 87505

WELL LOCATION AND ACREAGE DEDICATION PLAT

AMENDED REPORT

API Number 30-025-39867	Pool Code 44500	Pool Name MALJAMAR; YESO, WEST
Property Code 302519	Property Name MC FEDERAL	Well Number 63
OGRID No. 229137	Operator Name COG OPERATING, LLC	Elevation 4025'

Surface Location

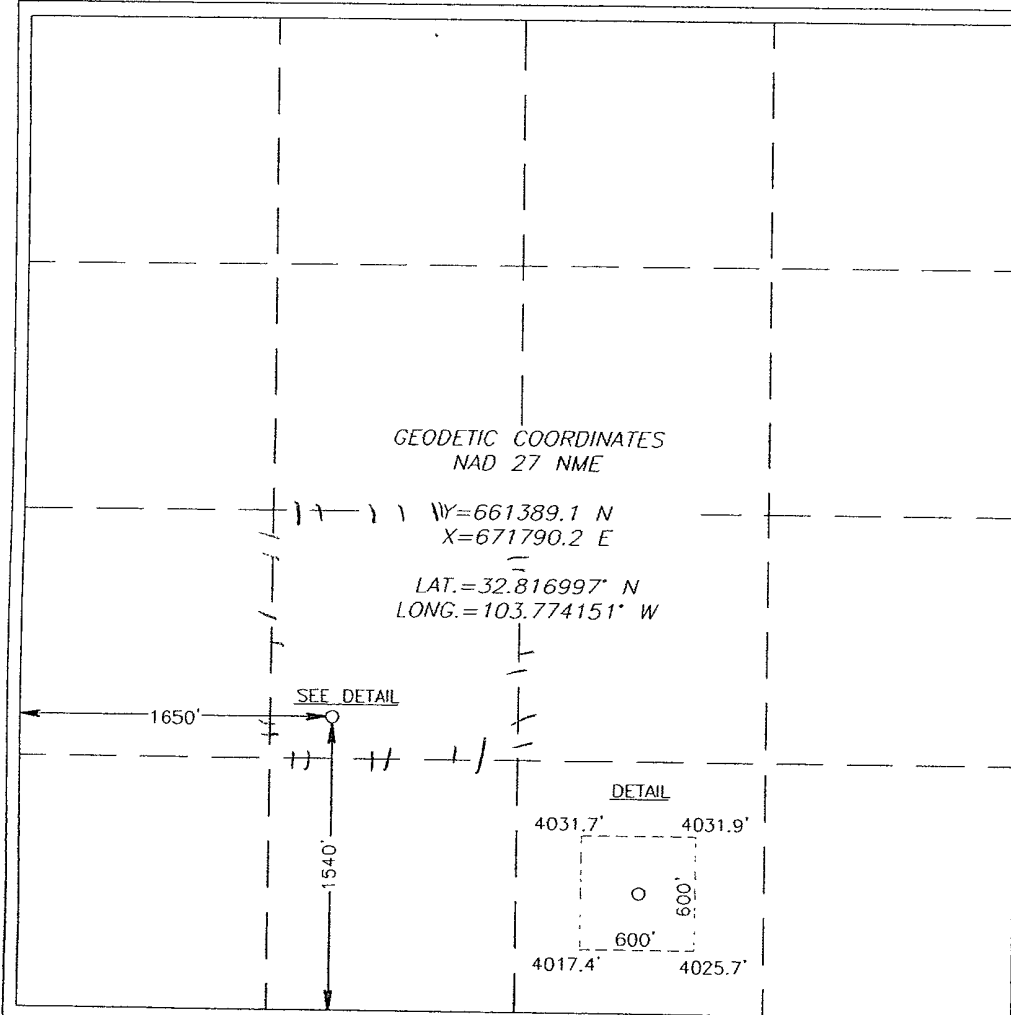
UL or lot No.	Section	Township	Range	Lot Idn	Feet from the	North/South line	Feet from the	East/West line	County
K	21	17-S	32-E		1540	SOUTH	1650	WEST	LEA

Bottom Hole Location If Different From Surface

UL or lot No.	Section	Township	Range	Lot Idn	Feet from the	North/South line	Feet from the	East/West line	County

Dedicated Acres 40	Joint or Infill	Consolidation Code	Order No. NSL-6190
-----------------------	-----------------	--------------------	-----------------------

NO ALLOWABLE WILL BE ASSIGNED TO THIS COMPLETION UNTIL ALL INTERESTS HAVE BEEN CONSOLIDATED OR A NON-STANDARD UNIT HAS BEEN APPROVED BY THE DIVISION



**OPERATOR CERTIFICATION**

I hereby certify that the information herein is true and complete to the best of my knowledge and belief, and that this organization either owns a working interest or unleased mineral interest in the land including the proposed bottom hole location or has a right to drill this well at this location pursuant to a contract with an owner of such mineral or working interest, or to a voluntary pooling agreement or a compulsory pooling order heretofore entered by the division.

*Robyn Odom* 4/22/2010  
Signature Date

Robyn Odom  
Printed Name

---

**SURVEYOR CERTIFICATION**

I hereby certify that the well location shown on this plat was plotted from field notes of actual surveys made by me or under my supervision, and that the same is true and correct to the best of my belief.

APRIL 7 2010  
Date Surveyed LA

*Gary G. Eidson*  
Signature & Seal of Professional Surveyor

10110259

Certificate No. GARY EIDSON 12641  
RONALD J. EIDSON 3239

RECEIVED

MASTER DRILLING PROGRAM

AUG 02 2010

HOBBSOCD

1. Geologic Name of Surface Formation

Quaternary

2. Estimated Tops of Important Geologic Markers:

Quaternary	Surface
Top of Salt	900'
Base of Salt	1700'
Yates	2000'
Seven Rivers	2375'
Queen	2975'
Grayburg	3475'
San Andres	3775'
Glorietta	5225'
Yeso Group	5325'

3. Estimated Depths of Anticipated Fresh Water, Oil and Gas

Water Sand	150'	Fresh Water
Grayburg	3475'	Oil/Gas
San Andres	3775'	Oil/Gas
Glorietta	5225'	Oil/Gas
Yeso Group	5325'	Oil/Gas

No other formations are expected to give up oil, gas or fresh water in measurable quantities. Setting 13 3/8" casing to 650' and circulating cement back to the surface will protect the surface fresh water sand. The Salt Section will be protected by setting 8 5/8" casing to 2100' and circulating cement, in a single or multi-stage job and/or with an ECP, back to the surface. Any shallower zones above TD, which contain commercial quantities of oil and/or gas, will have cement circulated across them. This will be achieved by cementing, with a single or multi-stage job, the 5 1/2" production casing back 200' into the intermediate casing, to be run at TD. If wellbore conditions arise that require immediate action and/or a change to this program, COG Operating LLC personnel will always react to protect the wellbore and/or the environment.

See  
 COA

4. Casing Program

See  
COA

Hole Size	Interval	OD Casing	Weight	Grade	Jt., Condition	burst/collapse/tension
17 1/2"	0- <del>650'</del> 800'	13 3/8"	48#	H-40orJ-55	ST&C/New	6.03/2.578/10.32
11" or <del>12 1/4"</del>	0-2100'	8 5/8"	24or32#	J-55	ST&C/New	1.85/1.241/4.78
7 7/8"	0-T.D.	5 1/2"	15.5or17#	J-55orL-80	LT&C/New	1.59/1.463/2.05

5. Cement Program

13 3/8" Surface Casing:

Class C, 4% Gel, 2% CaCl<sub>2</sub>, .25 pps CF, 450 sx lead, yield-1.98 + 200 sx tail, yield-1.32.

8 5/8" Intermediate Casing:

**11" Hole:**

**Single Stage:** 50:50:10, 400 sx lead, yield-2.45 + Class C, 200 sx tail, yield-1.32, back to surface.

See  
COA

**Multi-Stage:** Stage 1: Class C, 400 sx, yield - 1.32; Stage 2: Class C, 200 sx, yield - 1.32, back to surface. Multi stage tool to be set at approximately, depending on hole conditions, 650'

5 1/2" Production Casing:

**Single Stage:** 35:65:6, 500 sx Lead, yield-2.05 + 50:50:2, 400 sx Tail, yield-1.37, to 200' minimum tie back to intermediate casing.

See  
COA

**Multi-Stage:** Stage 1: 50:50:2, 400 sx, yield - 1.37; Stage 2: 35:65:6, 500 sx, yield - 2.05, to 200' minimum tie back to intermediate casing. Multi stage tool to be set at approximately, depending on hole conditions, ~~TD~~ - 2000'.

**6. Minimum Specifications for Pressure Control**

The blowout preventer equipment (BOP) shown in Exhibit #9 will consist of a double ram-type (2000 psi WP) preventer. This unit will be hydraulically operated and the ram type preventer will be equipped with blind rams on top of 4 1/2" drill pipe rams on the bottom. The BOP will be nipped up on the 13 3/8" surface casing with BOP equipment and tested ~~together to 1000 psi by rig pump~~ *See COA* ~~in one test.~~ The BOP will then be nipped up on the 8 5/8" intermediate casing and tested by a third party to 2000 psi and used continuously until total depth is reached. All BOP's and accessory equipment will be tested to 2000 psi before drilling out of the intermediate casing. Pipe rams will be operationally checked each 24-hour period. Blind rams will be operationally checked on each trip out of the hole. These checks will be noted on the daily tour sheets. Other accessories to the BOP equipment (Exhibit #10) will include a Kelly cock and floor safety valve, choke lines and a choke manifold (Exhibit #11) with a 2000 psi WP rating.

**7. Types and Characteristics of the Proposed Mud System**

The well will be drilled to TD with a combination of brine, cut brine and polymer mud system. The applicable depths and properties of this system are as follows:

*See COA*

DEPTH	TYPE	WEIGHT	VISCOSITY	WATERLOSS
<del>0-650'</del>	Fresh Water	8.5	28	N.C.
650-2100'	Brine	10	30	N.C.
2100'-TD	Cut Brine	8.7-9.1	29	N.C.

Sufficient mud materials will be kept at the well site to maintain mud properties and meet minimum lost circulation and weight increase requirements at all times.

**8. Auxiliary Well Control and Monitoring Equipment**

- A. Kelly cock will be kept in the drill string at all times.
- B. A full opening drill pipe-stabbing valve with proper drill pipe connections will be on the rig floor at all times.

**9. Logging, Testing and Coring Program** See COA

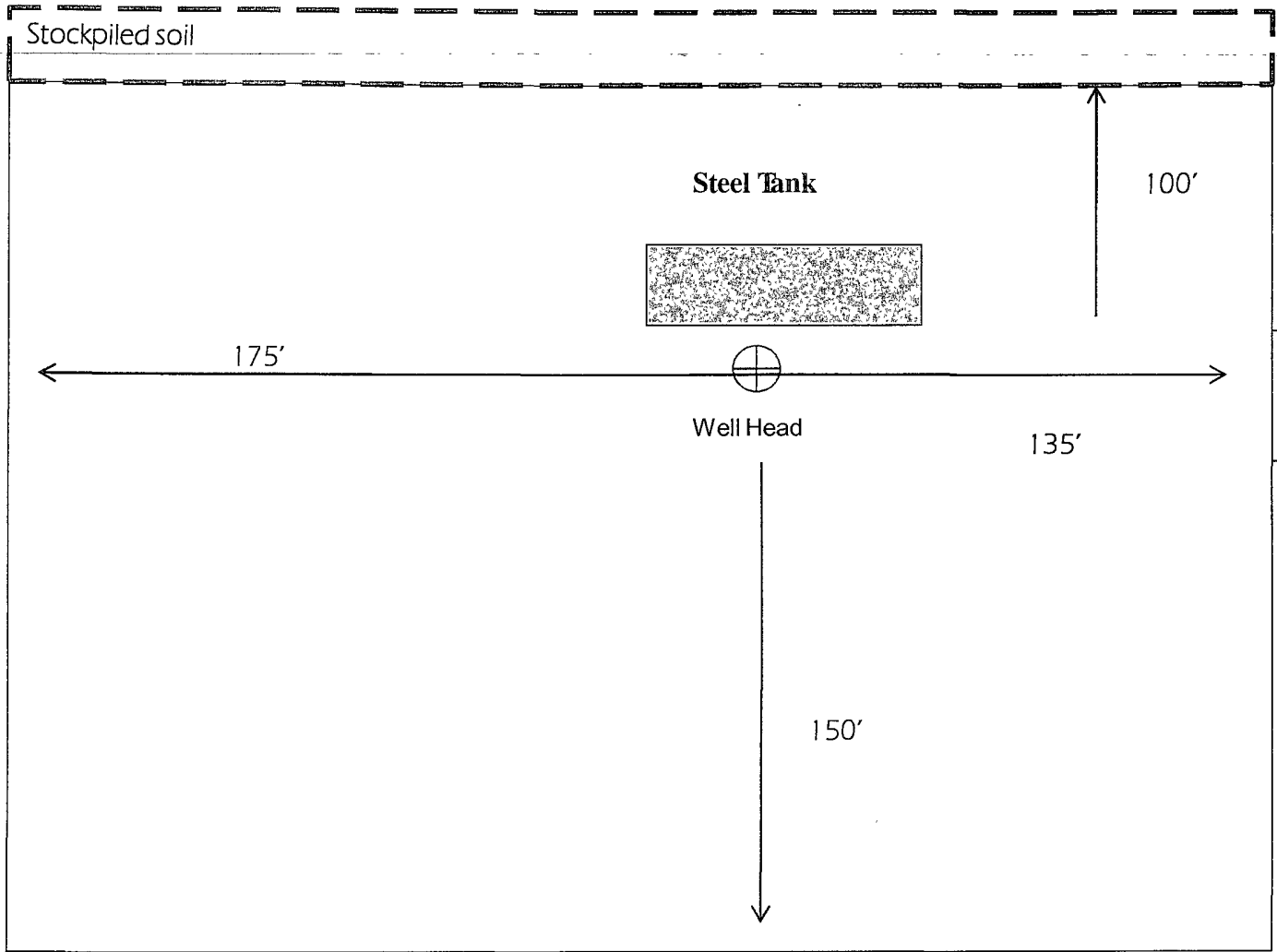
- A. The electric logging program will consist of GR-Dual Laterolog, Spectral Density, Dual Spaced Neutron, CSNG Log and will be run from TD to 8 5/8" casing shoe.
- B. Drill Stem test is not anticipated.
- C. No conventional coring is anticipated.
- D. Further testing procedures will be determined after the 5 1/2" production casing has been cemented at TD, based on drill shows and log evaluation.

**10. Abnormal Conditions, Pressure, Temperatures and Potential Hazards**

No abnormal pressures or temperatures are anticipated. The estimated bottom hole at TD is 110 degrees and the estimated maximum bottom hold pressure is 2300 psig. Measurable gas volumes or Hydrogen Sulfide levels have not been encountered during drilling operations in this area, although a Hydrogen Sulfide Drilling Operation Plan is attached to this program. No major loss of circulation zones has been reported in offsetting wells.

**11. Anticipated Starting Date and Duration of Operations**

Road and location work will not begin until approval has been received from the BLM. As this is a Master Drilling plan, please refer to the Form 3160-3 for the anticipated start date. Once commenced, drilling operations should be finished in approximately 15 days. If the well is productive, an additional 30 days will be required for completion and testing before a decision is made to install permanent facilities.



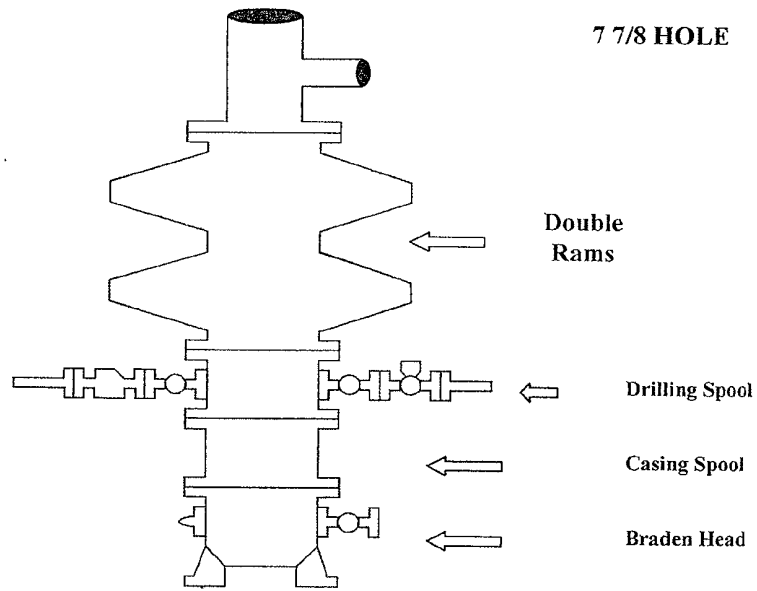
Not To Scale

© COG OPERATING LLC  
Rig Layout-Closed Loop  
System

# COG Operating LLC

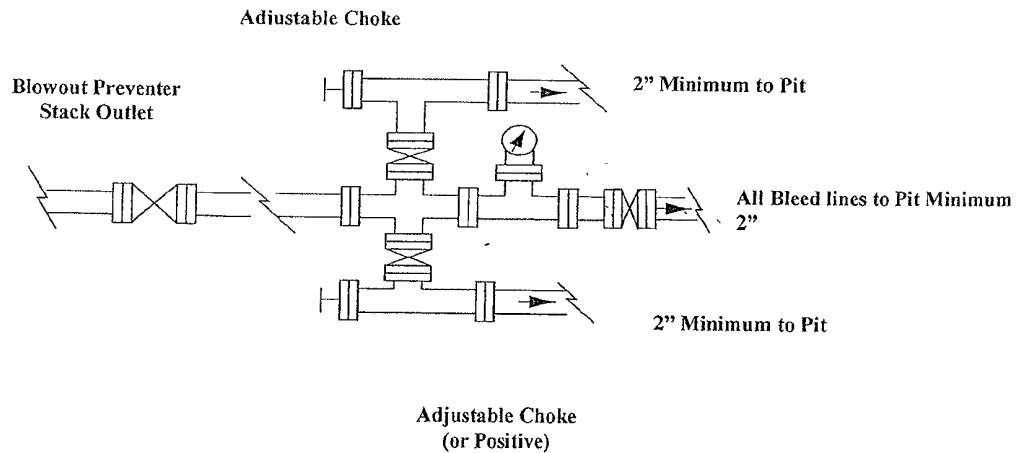
## Exhibit #9

### BOPE and Choke Schematic



Minimum 4" Nominal choke and kill lines

Choke Manifold Requirement (2000 psi WP)  
No Annular Required





**NOTES REGARDING THE BLOWOUT PREVENTERS**  
**Master Drilling Plan**  
**Eddy County, New Mexico**

1. Drilling nipple to be so constructed that it can be removed without use of a welder through rotary table opening, with minimum I.D. equal to preventer bore.
2. Wear ring to be properly installed in head.
3. Blow out preventer and all fittings must be in good condition, 2000 psi WP minimum.
4. All fittings to be flanged.
5. Safety valve must be available on rig floor at all times with proper connections, valve to be full 2000 psi WP minimum.
6. All choke and fill lines to be securely anchored especially ends of choke lines.
7. Equipment through which bit must pass shall be at least as large as the diameter of the casing being drilled through.
8. Kelly cock on Kelly.
9. Extension wrenches and hands wheels to be properly installed.
10. Blow out preventer control to be located as close to driller's position as feasible.
11. Blow out preventer closing equipment to include minimum 40-gallon accumulator, two independent sources of pump power on each closing unit installation all API specifications.

