

District I
1625 N. French Dr., Hobbs, NM 88240
District II
1301 W. Grand Avenue, Artesia, NM 88210
District III
1000 Rio Brazos Road, Aztec, NM 87410
District IV
1220 S. St. Francis Dr., Santa Fe, NM 87505

State of New Mexico
Energy Minerals and Natural Resources

Form C-101
June 16, 2008

RECEIVED
MAR 02 2011
HOBBSOCD

Oil Conservation Division
1220 South St. Francis Dr.
Santa Fe, NM 87505

Submit to appropriate District Office
 AMENDED REPORT

APPLICATION FOR PERMIT TO DRILL, RE-ENTER, DEEPEN, PLUGBACK, OR ADD A ZONE

¹ Operator Name and Address Resaca Operating Company 1331 Lamar St. Ste. 1450, Houston, TX 77010		² OGRID Number 263848
³ Property Code 306443		³ API Number 30-025-09649
³ Property Name Cooper Jal Unit		⁶ Well No. 230
⁹ Proposed Pool 1 Jalmat; Tansill-Yates-7Rivers (Oil) 33820		¹⁰ Proposed Pool 2

7 Surface Location

UL or lot no.	Section	Township	Range	Lot Idn	Feet from the	North/South line	Feet from the	East/West line	County
F	25	24S	36E		1650	North	2310	West	Lea

8 Proposed Bottom Hole Location If Different From Surface

UL or lot no.	Section	Township	Range	Lot Idn	Feet from the	North/South line	Feet from the	East/West line	County

Additional Well Information

¹¹ Work Type Code E	¹² Well Type Code I	¹³ Cable/Rotary R	¹⁴ Lease Type Code P	¹⁵ Ground Level Elevation 3302'
¹⁶ Multiple	¹⁷ Proposed Depth 3226'	¹⁸ Formation 7 Rivers	¹⁹ Contractor	²⁰ Spud Date

21 Proposed Casing and Cement Program

Hole Size	Casing Size	Casing weight/foot	Setting Depth	Sacks of Cement	Estimated TOC
13"	10 3/4"	42	275'	100	Surface
9 7/8"	5 1/2"	15	2946'	400	1950'
4 3/4"	4"	46	2900'-3226'	620	circ. cmt out top of liner

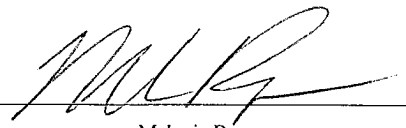
²² Describe the proposed program. If this application is to DEEPEN or PLUG BACK, give the data on the present productive zone and proposed new productive zone. Describe the blowout prevention program, if any. Use additional sheets if necessary.

1. Re-enter CJU #230 (This well was plugged 3/08/2001).
2. Drill out cement plugs at surface-450'; test squeeze perms @ 325' & 400' to 500 psig.
3. Drill out cement plugs 1050'-1300', 2300'-2600', 2865'-2900' & CIBP @ 2900'; Clean out 4" liner from 2900' to 3226'.
4. Perf Jalmat; Yates (3000'-14', 3016'-45', 3060'-77', and 3081'-3104', 3110'-17', 3120'-37', 3140'-46', 3148'-56', 3174'-84' & 3184'-95').
5. Stimulate Perfs 2983'-3226' with approximately 16,000 gallons 15% Star Acid (90/10 Acid/Xylene); Divert with 20,000#'s salt.
6. RDMO Pulling Unit, clean location, clean and dispose of pit fluids.

This well will be drilled using a Closed Loop System. C-144 will be filed accordingly.

**Permit Expires 2 Years From Approval
Date Unless Drilling Underway
Re-Entry**

²³ I hereby certify that the information given above is true and complete to the best of my knowledge and belief.

Signature: 

Printed name: Melanie Reyes

Title: Engineer Assistant

E-mail Address: melanie.reyes@resacaexploitation.com

Date: 3/01/2011 Phone: (432) 580-8500

OIL CONSERVATION DIVISION

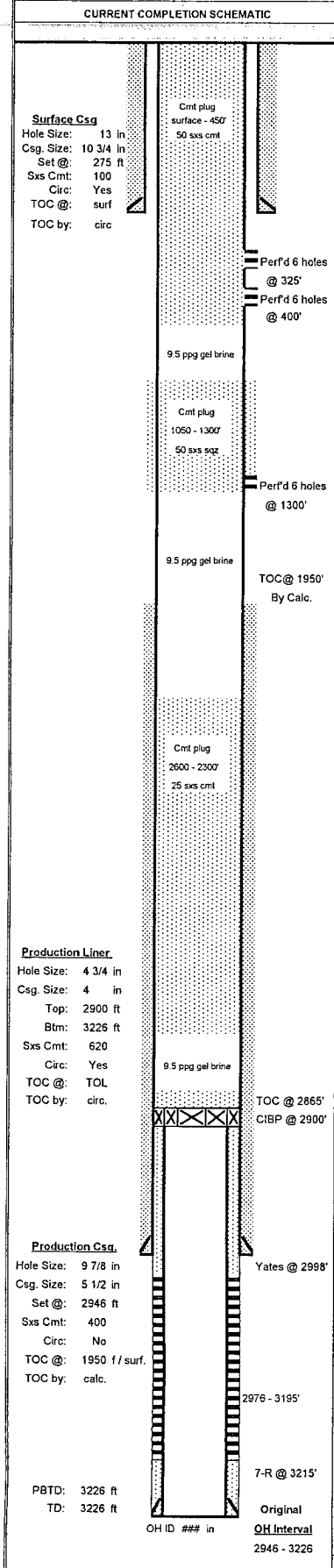
Approved by: **Denied**

DENIED BY Oil Conservation Division
On 3/17/11 see attached letter
APD Reviewed by dm ks
For more information on this matter, please call
Donna Mull @ (575) 393-6161 ext 115 or
email donna.mull@state.nm.us

DENIED because of Financial assurance per Rule 19.14.5.9(A)(1).

both

WELLBORE SCHEMATIC AND HISTORY



Surface Csg
 Hole Size: 13 in
 Csg. Size: 10 3/4 in
 Set @: 275 ft
 Sxs Cmt: 100
 Circ: Yes
 TOC @: surf
 TOC by: circ

Production Liner
 Hole Size: 4 3/4 in
 Csg. Size: 4 in
 Top: 2900 ft
 Btm: 3226 ft
 Sxs Cmt: 620
 Circ: Yes
 TOC @: TOL
 TOC by: circ

Production Csg
 Hole Size: 9 7/8 in
 Csg. Size: 5 1/2 in
 Set @: 2946 ft
 Sxs Cmt: 400
 Circ: No
 TOC @: 1950 f / surf.
 TOC by: calc.

PBTD: 3226 ft
 TD: 3226 ft

OH ID ### in
 Original OH Interval
 2946 - 3226

CURRENT COMPLETION SCHEMATIC		LEASE NAME Cooper Jal Unit		WELL NO. 230
STATUS: P&A'd (3-8-01) Oil		API# 30-025-09649		
LOCATION: 1650 FNL & 2310 FWL, Sec 25, T - 24S, R - 36E; Lee County, New Mexico				
SPUD DATE:	TD 3226	KB 3,307'	DF	
INT. COMP. DATE:	PBTD 3226	GL 3,302'		
ELECTRIC LOGS:		GEOLOGICAL DATA		
GR-N (11-8-79 WELEX)		CORES, DSTS, or MUD LOGS:		
HYDROCARBON BEARING ZONE DEPTH TOPS:				
Yates @ 2998' 7-Rivers @ 3215' Queen @ 3585'				
CASING PROFILE				
SURF. 10 3/4" - 42#, J-55 set @ 275' Cmt'd w/100 sxs - circ cmt to surf.				
PROD. 5 1/2" - 15#, J-55 set @ 2946' Cmt'd w/400 sxs - TOC @ 1950' from surface by calculation.				
LINER 4" - 10.46#, J-55, FJ csg set from 3226 - 2900'. Cmt'd w/620 sxs - circ cmt out TOL.				
CURRENT PERFORATION DATA				
CSG. PERFS:		OPEN HOLE : 2946 - 3226 original OH isolated w/4" liner		
5-Nov-79 Perf'd Yates f/ 2976', 2982', 2986', 2991', 3002', 3004', 3027', 3033', 3041', 3043', 3045' 3069', 3071'.3089', 3092' 3097', 3110', 3128', 3132', 3142' 3180', 3184', 3191', 3195' w/ 1 spf (24 holes total)				
TUBING DETAIL		ROD DETAIL		
WELL HISTORY SUMMARY				
6-Feb-51 Initial completion interval: (Yates OH) 2946 - 3186'; trt (3030 - 3183') w/ 250 qts nitro. IP = 60 bopd, 0 bwopd, and 56 Mcfgpd (pumping).				
6-Jul-79 C/O fill from 3031 - 3183'. Deepened to 3226'.				
5-Nov-79 C/O f/3102'-3226'. Installed 4" liner. Perf'd (Yates) 2976'- 3195' w/1 spf (24 holes). Acqd'd perms w/4,500 gals 15% HCl and 25 BSS in 3 stages. AIR=2.6 bpm @ 1800 psi. Frac'd w/51,000 gals gel wtr carrying 36,000#s 20/40 sand & 18,000#s 12/20 sd in 3 stages. AIR=20 bpm @ 3200#. After WO: 24 bopd, 52 bwopd, & GOR=740				
7-Dec-93 Replaced 1 bad jt and 2 bad collars in 2 3/8" tbg string. Ran new pmp and rods. Returned to production.				
22-Jun-99 Set CIBP @ 2900'. Dmp 35' cmt on top of CIBP. PBTD @ 2865'. Circ pkr. Fluid. Tst csg. Would not tst. Well TA'd.				
8-Mar-01 Tag PBTD @ 2875'. Circ well w/ gelled brine mud. Spot 25 sxs cmt from 2600'-2400'. WOC. Tag TOC @ 2300'. Perf'd 6 holes @ 1300'. Sqz'd 50 sxs cmt into perms @ 1300 ft @ 1 1/2 bpm & 1300#i. SIP=1050 psi. WOC. Tag TOC @ 1050'. Tst csg to 1700 psi. OK. Perf'd 6 holes @ 400'. Pressured to 1700#i. No pmp in rate. Perf'd 6 holes @ 325'. Pressured to 1700 psi No pmp in rate. Spotted 50 sxs cmt from 450' to surf. Removed wellhead. Cap casing. Installed Cap casing. Installed Dry hole marker & cleaned location. NMOCD notified - well P&A'd 3-8-2001.				
PREPARED BY:		Larry S. Adams		UPDATED: 30-Apr-02

District I
1625 N. French Dr., Hobbs, NM 88240
District II
1301 W. Grand Avenue, Artesia, NM 88210
District III
1000 Rio Brazos Rd., Aztec, NM 87410
District IV
1220 S. St. Francis Dr., Santa Fe, NM 87505

RECEIVED
MAR 02 2011
HOBBS, NM
State of New Mexico
Energy, Minerals & Natural Resources Department
OIL CONSERVATION DIVISION
1220 South St. Francis Dr.
Santa Fe, NM 87505

Form C-102
Revised July 16, 2010
Submit one copy to appropriate
District Office
 AMENDED REPORT

WELL LOCATION AND ACREAGE DEDICATION PLAT

¹ API Number 30-025-09649	² Pool Code 33820	³ Pool Name Jalmat; Tansill-Yates-7Rivers
⁴ Property Code 306443	⁵ Property Name Cooper Jal Unit	
⁷ OGRID No. 263848	⁸ Operator Name Resaca Operating Company	⁶ Well Number 230
		⁹ Elevation 3302'

¹⁰ Surface Location

UL or lot no.	Section	Township	Range	Lot Idn	Feet from the	North/South line	Feet from the	East/West line	County
F	25	24S	36E		1650	North	2310	West	Lea

¹¹ Bottom Hole Location If Different From Surface

UL or lot no.	Section	Township	Range	Lot Idn	Feet from the	North/South line	Feet from the	East/West line	County
¹² Dedicated Acres 40		¹³ Joint or Infill		¹⁴ Consolidation Code		¹⁵ Order No.			

No allowable will be assigned to this completion until all interests have been consolidated or a non-standard unit has been approved by the division.

<div style="text-align: center;"> <p>¹⁶</p> </div>	<p>¹⁷ OPERATOR CERTIFICATION I hereby certify that the information contained herein is true and complete to the best of my knowledge and belief, and that this organization either owns a working interest or unleased mineral interest in the land including the proposed bottom hole location or has a right to drill this well at this location pursuant to a contract with an owner of such a mineral or working interest, or to a voluntary pooling agreement or a compulsory pooling order heretofore entered by the division.</p> <p style="text-align: right;"> Signature 3/01/2011 Date </p> <p> Melanie Reyes Printed Name melanie.reyes@resacaexploitation.com E-mail Address </p>
	<p>¹⁸ SURVEYOR CERTIFICATION I hereby certify that the well location shown on this plat was plotted from field notes of actual surveys made by me or under my supervision, and that the same is true and correct to the best of my belief.</p>
	<p>Date of Survey Signature and Seal of Professional Surveyor:</p>
	<p>Certificate Number</p>