

**NEW MEXICO OIL CONSERVATION COMMISSION
WELL LOCATION AND ACREAGE DEDICATION PLAT**

Form C-102
Supersedes C-128
Effective 1-1-65

All distances must be from the outer boundaries of the Section.

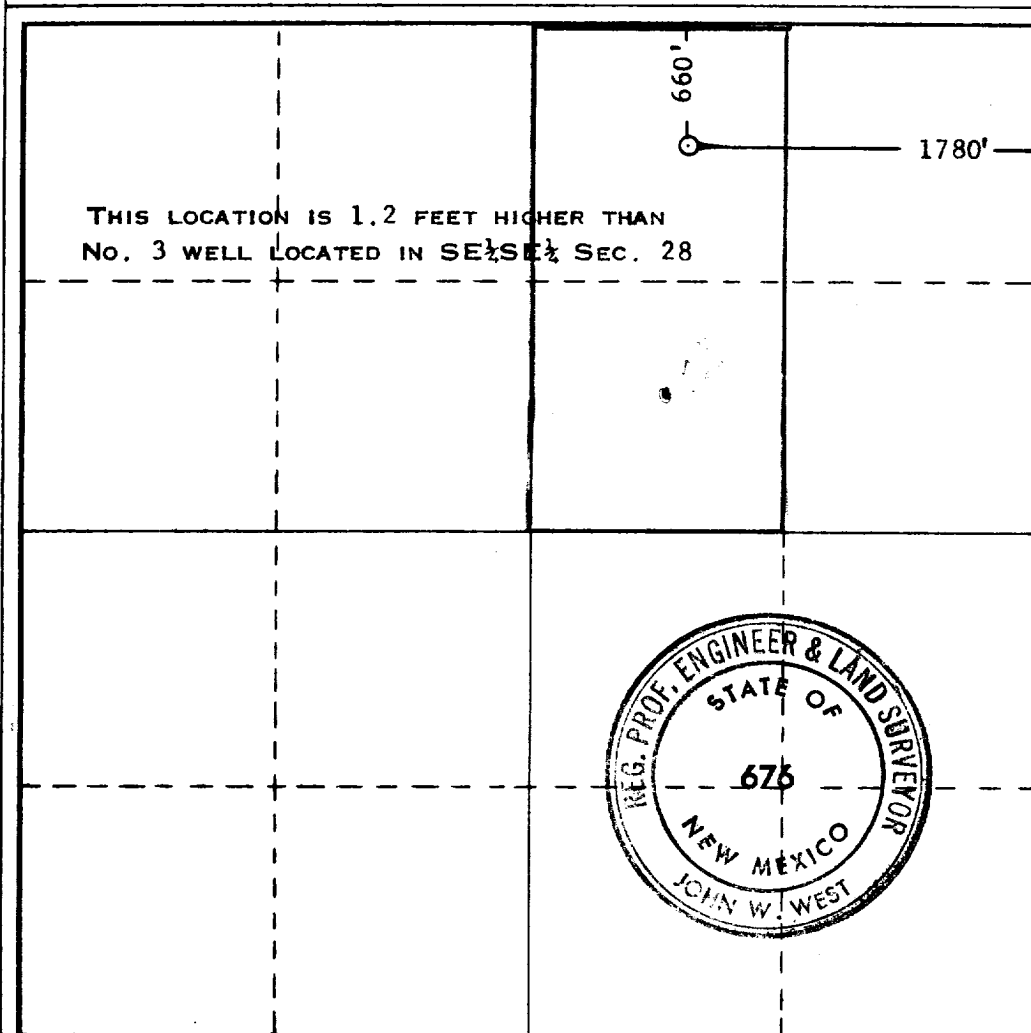
Operator OIL DEVELOPMENT COMPANY OF TEXAS			Lease SANTA FE PACIFIC RAILROAD		Well No. 4
Unit Letter B	Section 33	Township 9 SOUTH	Range 37 EAST	County LEA	
Actual Footage Location of Well: 660 feet from the NORTH line and 1780 feet from the EAST line					
Ground Level Elev. 3966.8	Producing Formation San Andres		Pool West Sawyer		Dedicated Acreage: 80 Acres

1. Outline the acreage dedicated to the subject well by colored pencil or hatchure marks on the plat below.
2. If more than one lease is dedicated to the well, outline each and identify the ownership thereof (both as to working interest and royalty).
3. If more than one lease of different ownership is dedicated to the well, have the interests of all owners been consolidated by communitization, unitization, force-pooling, etc?

☐ Yes ☐ No If answer is "yes," type of consolidation _____

If answer is "no," list the owners and tract descriptions which have actually been consolidated. (Use reverse side of this form if necessary.) _____

No allowable will be assigned to the well until all interests have been consolidated (by communitization, unitization, forced-pooling, or otherwise) or until a non-standard unit, eliminating such interests, has been approved by the Commission.



CERTIFICATION

I hereby certify that the information contained herein is true and complete to the best of my knowledge and belief.

Larry D. Lovel
Name

Petroleum Engineer
Position

Oil Development Company of Texas
Company

Company

July 13, 1970
Date

Date

I hereby certify that the well location shown on this plat was plotted from field notes of actual surveys made by me or under my supervision, and that the same is true and correct to the best of my knowledge and belief.

Date Surveyed

JULY 9, 1970

Registered Professional Engineer
and/or Land Surveyor

John W. West
Certificate No.

676



173

RECEIVED

JUL 1 1970

OIL CONSERVATION DIV.
BOSTON, MASS.