

UNITED STATES
DEPARTMENT OF THE INTERIOR
GEOLOGICAL SURVEY

APPLICATION FOR PERMIT TO DRILL, DEEPEN, OR PLUG BACK

1a. TYPE OF WORK
 DRILL DEEPEN PLUG BACK

b. TYPE OF WELL
 OIL WELL GAS WELL OTHER
 SINGLE ZONE MULTIPLE ZONE

2. NAME OF OPERATOR
 Union Oil Company of California

3. ADDRESS OF OPERATOR
 P.O. Box 671 - Midland, Texas 79701

4. LOCATION OF WELL (Report location clearly and in accordance with any State requirements.*)
 At surface
 2306' FNL & 1687' FWL
 At proposed prod. zone

14. DISTANCE IN MILES AND DIRECTION FROM NEAREST TOWN OR POST OFFICE*

15. DISTANCE FROM PROPOSED* LOCATION TO NEAREST PROPERTY OR LEASE LINE, FT. (Also to nearest drlg. unit line, if any) 1687

16. NO. OF ACRES IN LEASE 640

17. NO. OF ACRES ASSIGNED TO THIS WELL 40

18. DISTANCE FROM PROPOSED LOCATION* TO NEAREST WELL, DRILLING, COMPLETED, OR APPLIED FOR, ON THIS LEASE, FT.

19. PROPOSED DEPTH 11200'

20. ROTARY OR CABLE TOOLS Rotary

21. ELEVATIONS (Show whether DF, RT, GR, etc.)
 4152.3' GR

22. APPROX. DATE WORK WILL START*
 On approval

23. PROPOSED CASING AND CEMENTING PROGRAM

SIZE OF HOLE	SIZE OF CASING	WEIGHT PER FOOT	SETTING DEPTH	QUANTITY OF CEMENT
15"	11-3/4"	42#	500'	400 sx - circulate to surface
11"	8-5/8"	24 & 32#	3060'	500 sx
7-7/8"	5 1/2"	15.5 & 17#	11200'	Determine from logs

3000# Hydraulic B.O.P.

RECEIVED
 JUL 18 1972
 U. S. GEOLOGICAL SURVEY
 ALBUQUERQUE, NEW MEXICO

IN ABOVE SPACE DESCRIBE PROPOSED PROGRAM: If proposal is to deepen or plug back, give data on present productive zone and proposed new productive zone. If proposal is to drill or deepen directionally, give pertinent data on subsurface locations and measured and true vertical depths. Give blowout preventer program, if any.

24. SIGNED John L. Beekman TITLE District Drilling Supt. DATE July 17, 1972
 (This space for Federal or State office use)

PERMIT NO. _____ APPROVAL DATE _____

APPROVED
 JUL 23 1972
 H. L. BEEKMAN
 ACTING DISTRICT ENGINEER

THIS APPROVAL IS RESCINDED IF OPERATIONS ARE NOT COMMENCED WITHIN 3 MONTHS.
 OCT 28 1972
 See Instructions On Reverse Side

NEW MEXICO OIL CONSERVATION COMMISSION
WELL LOCATION AND ACREAGE DEDICATION PLAT

Form O-102
Supersedes C-128
Effective 1-1-65

All distances must be from the outer boundaries of the Section

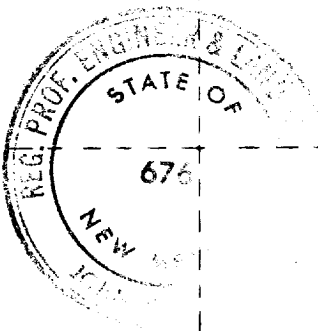
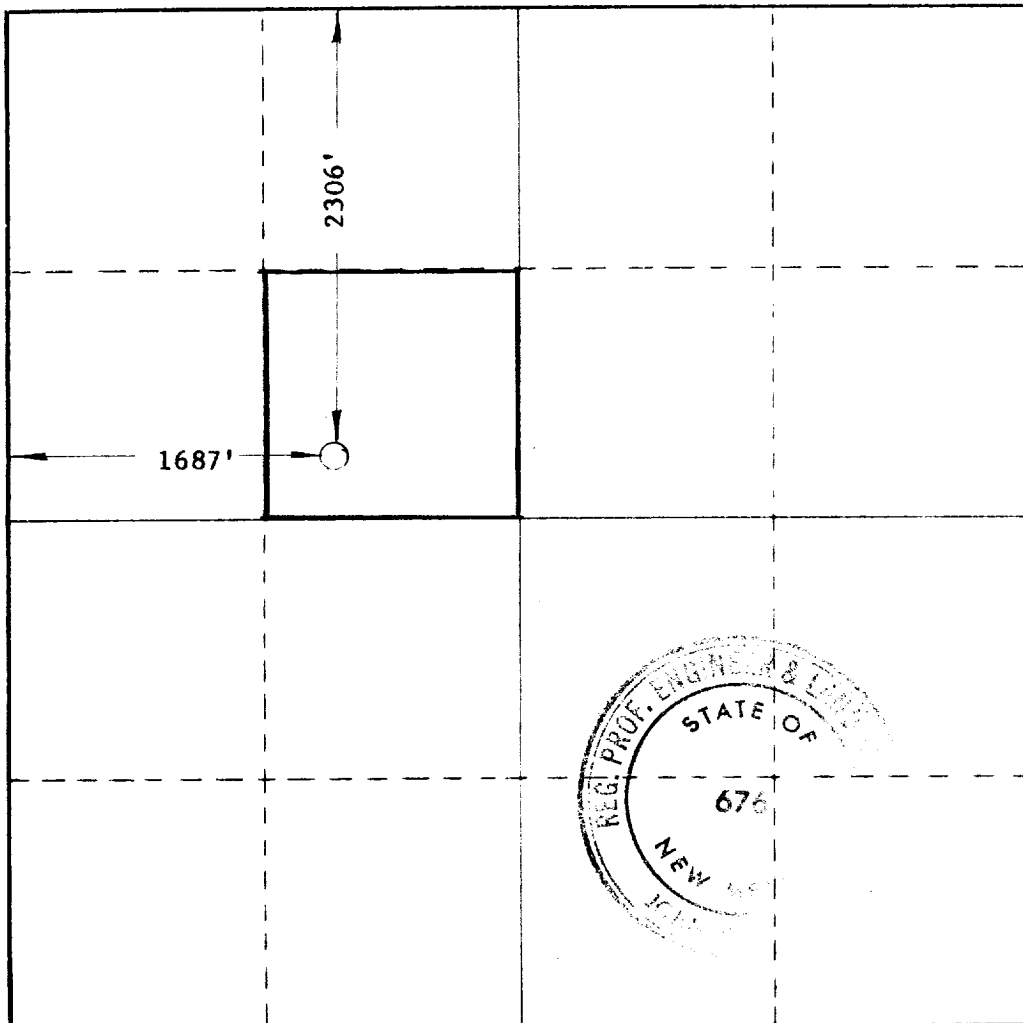
Operator UNION OIL COMPANY OF CALIFORNIA		Lease FEDERAL 6		Well No. 1
Unit Letter F	Section 6	Township 10 SOUTH	Range 31 EAST	County CHAVES
Actual Footage Location of Well: 2306 feet from the NORTH line and 1687 feet from the WEST line.				
Ground Level Elev. 4152.3'	Producing Formation Silurian	Pool Wildcat	Dedicated Acreage: 40 Acres	

1. Outline the acreage dedicated to the subject well by colored pencil or hachure marks on the plat below.
2. If more than one lease is dedicated to the well, outline each and identify the ownership thereof (both as to working interest and royalty).
3. If more than one lease of different ownership is dedicated to the well, have the interests of all owners been consolidated by communitization, unitization, force-pooling, etc?

Yes No If answer is "yes," type of consolidation _____

If answer is "no," list the owners and tract descriptions which have actually been consolidated. (Use reverse side of this form if necessary.) _____

No allowable will be assigned to the well until all interests have been consolidated (by communitization, unitization, forced-pooling, or otherwise) or until a non-standard unit, eliminating such interests, has been approved by the Commission.



CERTIFICATION

I hereby certify that the information contained herein is true and complete to the best of my knowledge and belief.

Name: *John W. West*
 Position: **District Drilling Supt.**
 Company: **Union Oil Co. of California**
 Date: **July 17, 1972**

I hereby certify that the well location shown on this plat was plotted from field notes of actual surveys made by me or under my supervision and that the same is true and correct to the best of my knowledge and belief.

Date surveyed: **JULY 11, 1972**
 Registered Professional Engineer and/or Land Surveyor:
John W. West
 Certificate No. **676**

